

MOVED FOR ADOPTION BY: _____, SECONDED BY: _____

WHEREUPON THIS ORDINANCE WAS SUBMITTED TO A VOTE AND RESULTED IN THE FOLLOWING:

YEAS:

NAYS:

ABSTAIN:

ABSENT:

THIS ORDINANCE WAS DECLARED ADOPTED AT A REGULAR MEETING OF THE PARISH COUNCIL ON THE 4TH DAY OF AUGUST 2022; AND BECOMES ORDINANCE COUNCIL SERIES NO. 22-.

JERRY BINDER, COUNCIL CHAIRMAN

ATTEST:

KATRINA L. BUCKLEY, COUNCIL CLERK

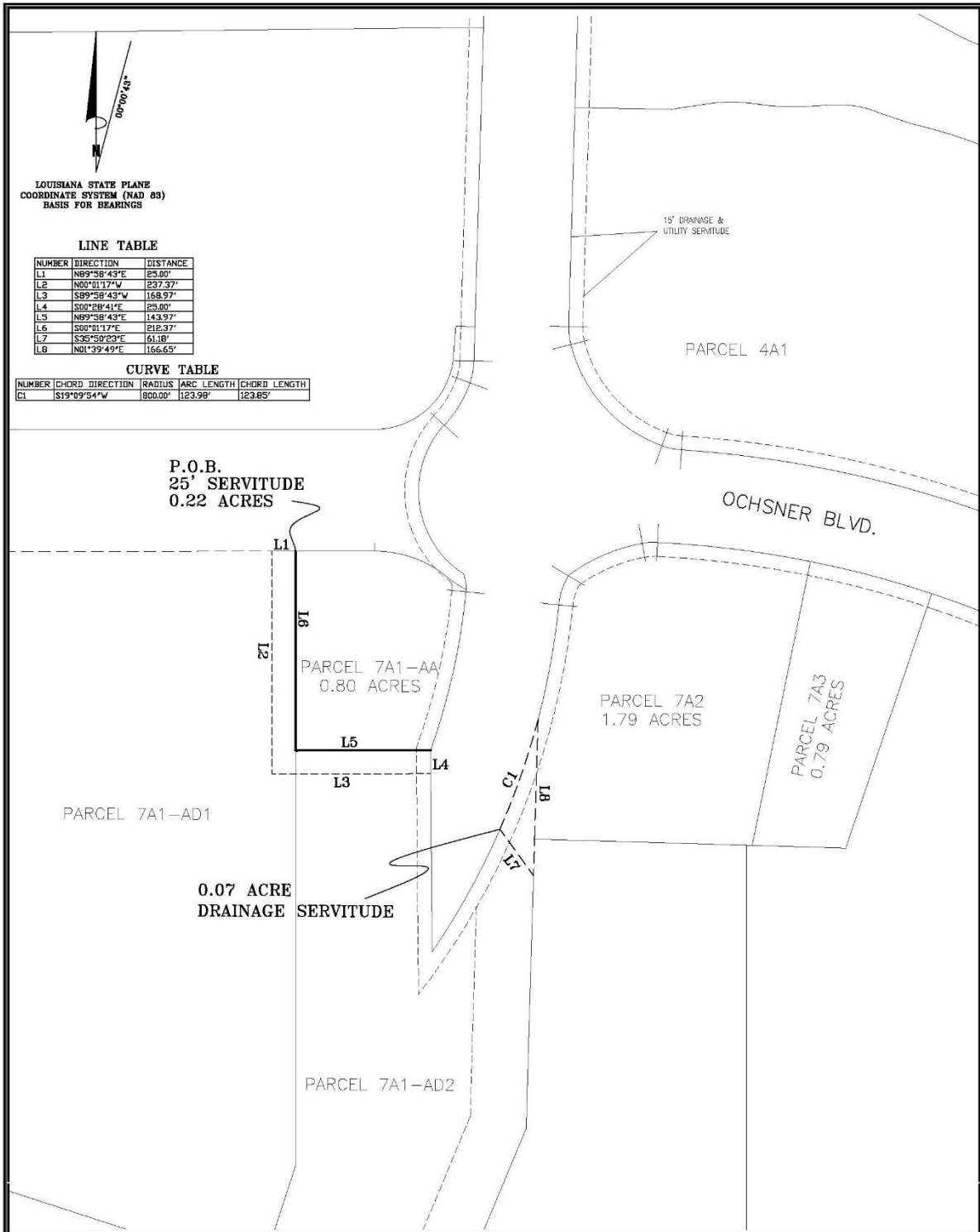
MICHAEL B. COOPER, PARISH PRESIDENT

Published introduction: JUNE 29, 2022

Published adoption on: _____, 2022

Delivered to Parish President: _____, 2022 @ _____

Returned to Council Clerk: _____, 2022 @ _____



LOUISIANA STATE PLANE
 COORDINATE SYSTEM (NAD 83)
 BASIS FOR BEARINGS

LINE TABLE

NUMBER	DIRECTION	DISTANCE
L1	N89°58'43"E	25.00'
L2	N00°01'17"W	237.37'
L3	S89°58'43"W	158.97'
L4	S00°28'41"E	25.00'
L5	N89°58'43"E	143.97'
L6	S00°01'17"E	212.37'
L7	S35°59'23"E	61.18'
L8	N01°39'49"E	156.65'

CURVE TABLE

NUMBER	CHORD DIRECTION	RADIUS	ARC LENGTH	CHORD LENGTH
C1	S19°09'54"W	800.00'	123.98'	123.85'

P.O.B.
 25' SERVITUDE
 0.22 ACRES

PARCEL 7A1-AD1

0.07 ACRE
 DRAINAGE SERVITUDE

PARCEL 7A1-AD2

PARCEL 7A1-AA
 0.80 ACRES

PARCEL 7A2
 1.79 ACRES

PARCEL 7A3
 0.79 ACRES

OCHSNER BLVD.

15' DRAINAGE &
 UTILITY SERVITUDE

A SKETCH MAP OF
 A PROPOSED 0.07 ACRE DRAINAGE SERVITUDE & A PROPOSED 25' SERVITUDE
 SITUATED IN
 PARCELS 7A1-AD1 & 7A1-AD2
 SECTION 12, T-7-S, R-10-E
 St. Tammany Parish, Louisiana
 for
WAINER COMPANIES

Survey No. 2019 428C Drawn by: SPH & DMC Scale: 1"=100'
 Date: JUNE 2, 2022 Revised:



Professional Land Surveyors
 Planners and Consultants
 1011 NORTH CAUSEWAY BLVD., SUITE 34
 MANDEVILLE, LA 70471
 OFFICE NO. (985)845-1012
 FAX NO. (985)845-1778
 www.lowengineers.com
 e-mail: MandevilleTeam@lowengineers.com

COPYRIGHT © 2022
 ALL RIGHTS RESERVED
 LOWE ENGINEERS, LLC