

Parcel ID R22351 Current Zoning - IND - Industrial



Legend

- ◆ Addresses_2020_05_04
- Roads
- ▭ Parcels_04_2021

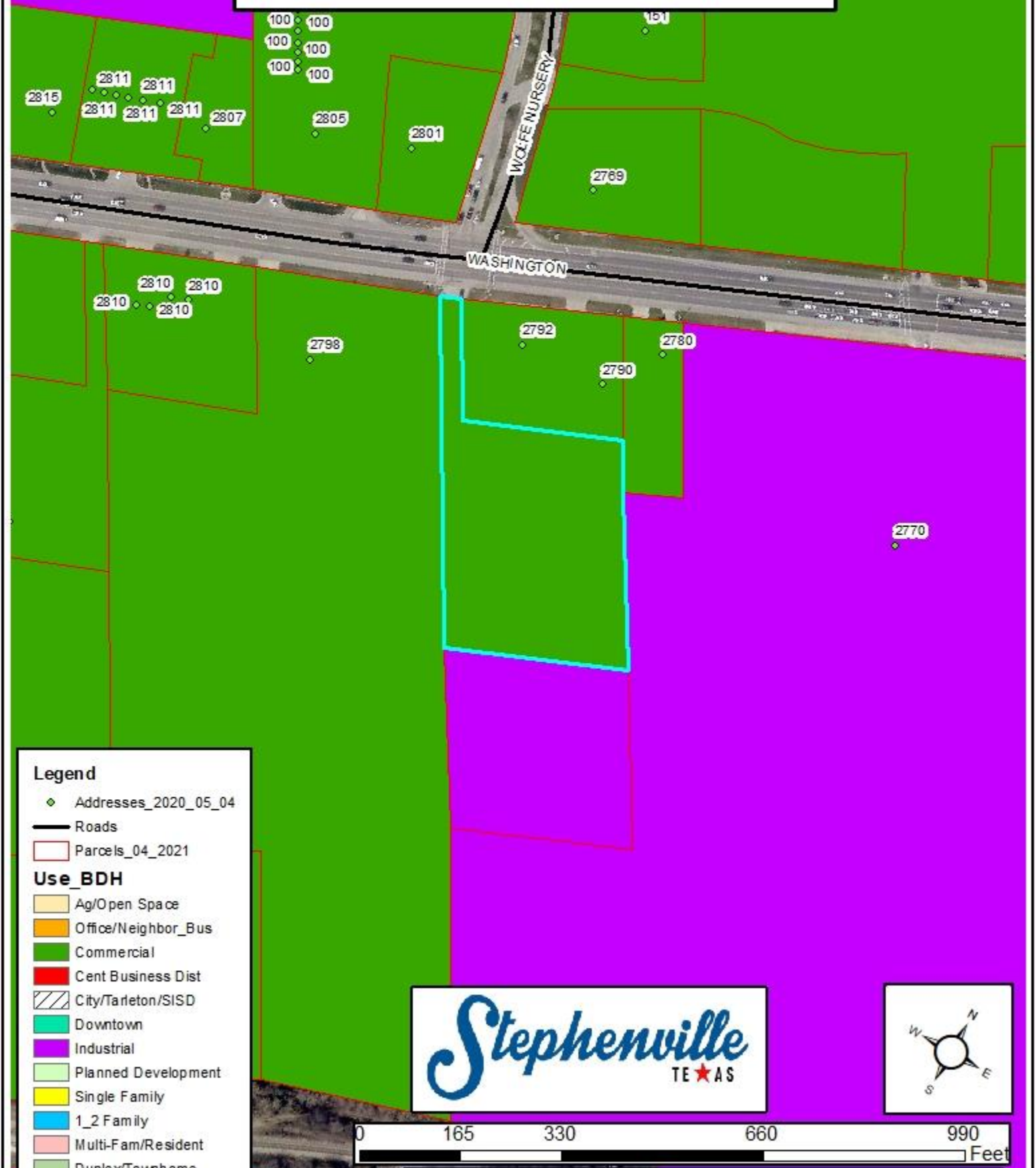
ZONING

- AG - Agricultural
- B-1 - Neighborhood Business
- B-2 - Retail and Commercial Business
- B-3 - Central Business
- B-4 - Private Club
- CTS - City, Tareyton, School
- DT - Downtown
- IND - Industrial
- PD - Planned Development
- R-1 - Single Family - 7,500
- R-1.5 - Single Family - 6,000
- R-2 - One and Two Family
- R-3 - Multiple Family
- RE - Single Family - 1 Acre



The City of Stephenville makes every effort to ensure this map is free of errors but does not warrant the map or its features. The City of Stephenville provides this map without any warranty of any kind whatsoever, either express or implied.

Parcel ID R22351 Future Land Use - Commercial



Legend

- ◆ Addresses_2020_05_04
- Roads
- ▭ Parcels_04_2021

Use_BDH

- Ag/Open Space
- Office/Neighbor_Bus
- Commercial
- Cent Business Dist
- City/Tarleton/SISD
- Downtown
- Industrial
- Planned Development
- Single Family
- 1_2 Family
- Multi-Fam/Resident
- Duplex/Townhome
- Manufact Homes

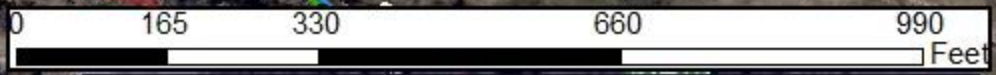


The City of Stephenville makes every effort to ensure this map is free of errors but does not warrant the map or its features. The City of Stephenville provides this map without any warranty of any kind whatsoever, either express or implied.

Parcel ID R22351 Water & Sewer Utilities



- Legend**
- ◆ Addresses_2020_05_04
 - Roads
 - Parcels_04_2021
 - Manhole
 - Sewer_Lines
 - Water_Lines
 - Well_Line



The City of Stephenville makes every effort to ensure this map is free of errors but does not warrant the map or its features. The City of Stephenville provides this map without any warranty of any kind whatsoever, either express or implied.

Parcel R22351 Addresses

Parcel ID	Parcel Address	Parcel Owner	Owner Address	City	State	Zip Code
R000022391	2790 W WASHINGTON	EG TEJAS LLC	200 CONCORD PLAZA DRIVE, SUITE 240	SAN ANTONIO	TX	78216
R000022351	2794 W WASHINGTON	EG TEJAS LLC	200 CONCORD PLAZA DRIVE, SUITE 240	SAN ANTONIO	TX	78216
R000022338	2798 W WASHINGTON	EG TEJAS LLC	200 CONCORD PLAZA DRIVE, SUITE 240	SAN ANTONIO	TX	78216
R000067107	2801 W WASHINGTON	RIENSTRA BILL & SIDNEY LLC	106 ANGELA CT	STEPHENVILLE	TX	76401
R000030554	2770 W WASHINGTON	SAINT GOBAIN ABRASIVES INC	750 SWEDESFORD RD	VALLEY FORGE	PA	19482
R000060646	2769 W WASHINGTON	TACO BELL OF AMERICA LLC	1 GLEN BELL WAY	IRVINE	CA	92618
R000022355	2780 W WASHINGTON	UFO 143 LLC	430 N CENTER ST	LONGVIEW	TX	75601
R000060088	2765 W WASHINGTON	WAL-MART REAL EST BUS TRUST STORE #610	PO BOX 8050-MS0555	BENTONVILLE	AR	72712-8050