

Preliminary OPCC
Drew - Micah
City of Stephenville, Texas

Drew - Micah		Utilities, Paving, Sidewalk, C&G, And Lights			
Item	Description	Est. Qty.	Qty. Unit	Unit Price	Total
Section A - General					
A-01	Mobilization and Demobilization	1	LS	\$25,000.00	\$25,000.00
A-02	Force Account	1	LS	\$5,000.00	\$5,000.00
A-03	Prepare and Implement Traffic Control Plan	1	LS	\$8,000.00	\$8,000.00
A-04	Prepare and Implement SWPPP	1	LS	\$2,000.00	\$2,000.00
A-05	Temporary Project Sign	2	EA	\$1,000.00	\$2,000.00
A-06	Unclassified Excavation	1,000	CY	\$10.00	\$10,000.00
A-07	Embankment	1,000	CY	\$10.00	\$10,000.00
A-08	Materials Testing	1	LS	\$10,000.00	\$10,000.00
A-09	Erosion Control - Construction Entrance - 345LF Silt Fence	1	LS	\$3,000.00	\$3,000.00
Section A Subtotal					\$75,000.00
Section B - Demolition					
B-01	Clearing and Grubbing For Site Preparation	1	LS	\$15,000.00	\$15,000.00
Section B Subtotal					\$15,000.00
Section C - Asphalt Pavement					
C-01	3.5" HMAc (Ty-D) (PG 64-22) (115 LBS/SY/IN)	700	SY	\$70.00	\$49,000.00
C-02	12" Flexible Base (Ty-A) (Gr-4)	1,013	SY	\$48.00	\$48,624.00
C-03	6" Reinforced Concrete Pavement	0	SY	\$150.00	\$0.00
C-04	Barrier Free Ramp	2	EA	\$2,500.00	\$5,000.00
Section C Subtotal					\$102,624.00
Section D - Curb, Gutter & Sidewalk					
D-01	30" Concrete Curb & Gutter	630	LF	\$31.00	\$19,530.00
D-02	Concrete Valley Gutter		LF	\$95.00	\$0.00
D-03	6" Driveways (Concrete)	1,200	SF	\$10.00	\$12,000.00
D-04	5-FT Wide Concrete Sidewalks (4-inch)	2,600	SF	\$6.50	\$16,900.00
D-05	Curb Ramps	0	EA	\$3,450.00	\$0.00
D-06	Special Concrete Sidewalk w/ Integrated Retaining Wall (Stamped)	0	SY	\$332.00	\$0.00
D-07	Sodding and 4" Topsoil		SY	\$20.00	\$0.00
Section D Subtotal					\$48,430.00
Section E - Roadway Improvements					
E-01	Pavement Markings and Signage	1	LS	\$1,000.00	\$1,000.00
E-02	Type III Barricade	1	LS	\$5,000.00	\$5,000.00
Section E Subtotal					\$6,000.00
Section F - Water Improvements					
F-01	6-Inch Waterline (AWWA C900, Class 3, DR-18)	225	LF	\$75.00	\$16,875.00
F-02	Cast Iron Fittings	1	LS	\$2,500.00	\$2,500.00
F-02	Fire Hydrant Assembly	1	EA	\$6,500.00	\$6,500.00
F-03	6-Inch Gate Valve	3	EA	\$2,530.00	\$7,590.00
F-04	Water Line Trench Safety	225	LF	\$4.00	\$900.00
F-05	3/4-Inch Domestic Water Service	6	EA	\$1,500.00	\$9,000.00
F-06	Connect to Existing Water Line	1	EA	\$3,000.00	\$3,000.00
Section F Subtotal					\$46,365.00
Section G - Sanitary Sewer Improvements					
G-01	8-Inch SDR 35 PVC Sanitary Sewer Pipe	190	LF	\$100.00	\$19,000.00
G-02	4-FT Diameter Manhole	1	EA	\$6,000.00	\$6,000.00
G-03	4-Inch Domestic Service Connections with Double Cleanout	6	EA	\$1,500.00	\$9,000.00
G-04	Sewer Line Trench Safety	190	LF	\$4.00	\$760.00
Section H - Lighting Improvements					
G-01	Electrical Conduit, Connections and Light Pole Bases	1	LS	\$0.00	\$0.00
Section G Subtotal					\$0.00
TOTAL AMOUNT					\$293,419.00

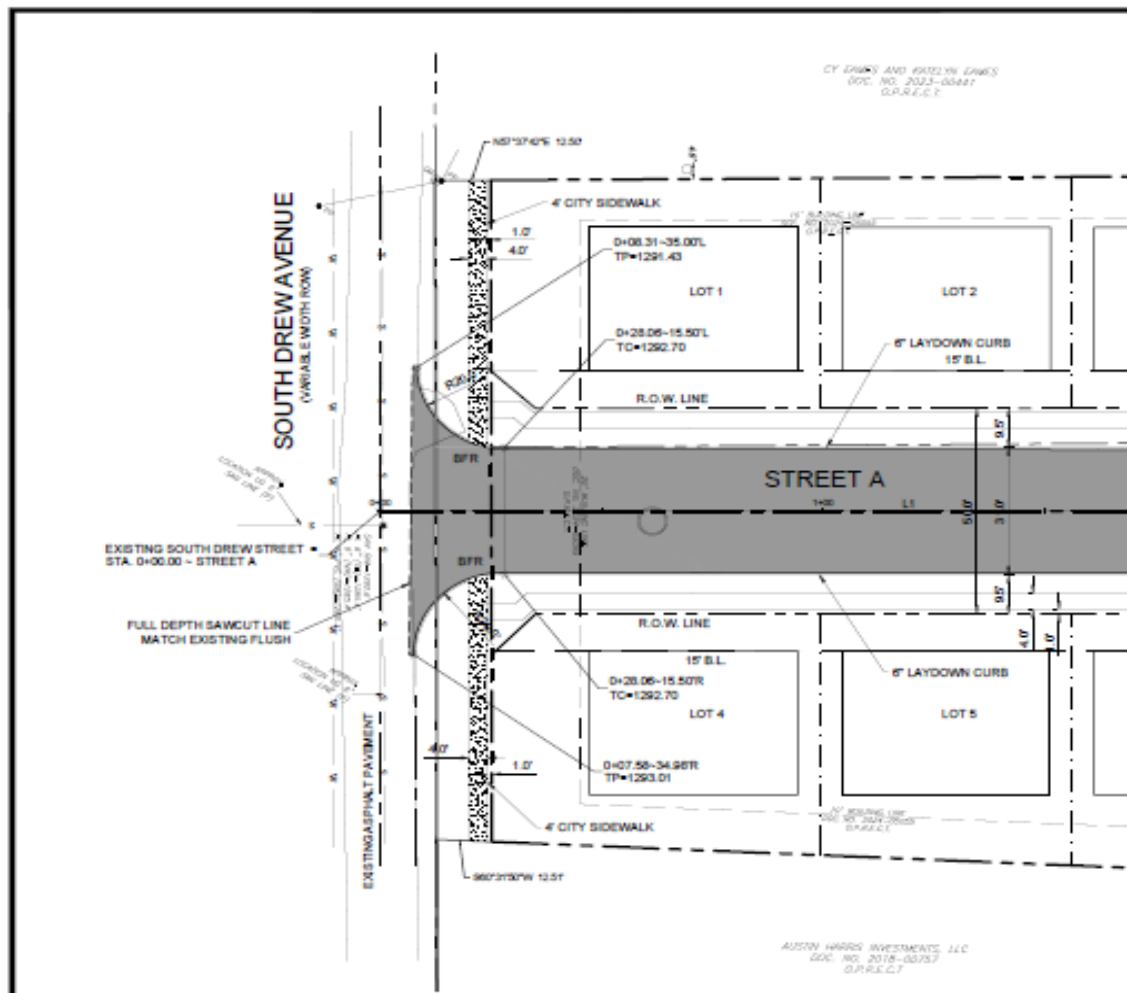
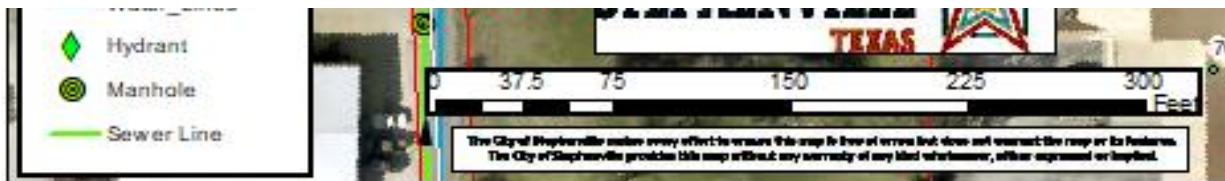
Section A - General	\$75,000.00
Section B - Demolition	\$15,000.00
Section C - Asphalt Pavement	\$102,624.00
Section D - Curb, Gutter & Sidewalk	\$6,000.00
Section E - Roadway Improvements	\$1,000.00
Section F - Water Improvements	\$46,365.00
0	\$0.00
TOTAL	\$245,989.00
CONTINGENCY (20%)	\$49,197.80
ENGINEERING (20%)	\$49,197.80
GRAND TOTAL	\$344,384.60

Preliminary OPCC
Drew - Micah
City of Stephenville, Texas

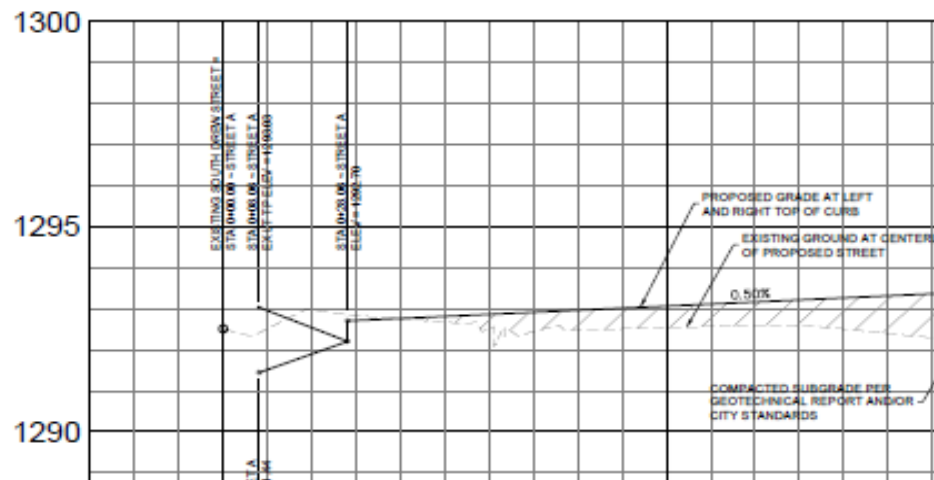
Drew - Micah		Utilities, Paving, Sidewalk, C&G, And Lights			
Item	Description	Est. Qty.	Qty. Unit	Unit Price	Total
Section A - General					
A-01	Mobilization and Demobilization	1	LS	\$0.00	\$0.00
A-02	Force Account	1	LS	\$0.00	\$0.00
A-03	Prepare and Implement Traffic Control Plan	1	LS	\$0.00	\$0.00
A-04	Prepare and Implement SWPPP	1	LS	\$0.00	\$0.00
A-05	Temporary Project Sign	2	EA	\$0.00	\$0.00
A-06	Unclassified Excavation	1,000	CY	\$0.00	\$0.00
A-07	Embankment	1,000	CY	\$0.00	\$0.00
A-08	Materials Testing	1	LS	\$10,000.00	\$10,000.00
A-09	Erosion Control - Construction Entrance - 345LF Silt Fence	1	LS	\$0.00	\$0.00
Section A Subtotal					\$10,000.00
Section B - Demolition					
B-01	Clearing and Grubbing For Site Preparation	1	LS	\$0.00	\$0.00
Section B Subtotal					\$0.00
Section C - Asphalt Pavement					
C-01	3.5" HMAC (Ty-D) (PG 64-22) (115 LBS/SY/IN)	700	SY	\$70.00	\$49,000.00
C-02	12" Flexible Base (Ty-A) (Gr-4)	1,013	SY	\$48.00	\$48,624.00
C-03	6" Reinforced Concrete Pavement	0	SY	\$150.00	\$0.00
C-04	Barrier Free Ramp	2	EA	\$2,500.00	\$5,000.00
Section C Subtotal					\$102,624.00
Section D - Curb, Gutter & Sidewalk					
D-01	30" Concrete Curb & Gutter	630	LF	\$31.00	\$19,530.00
D-02	Concrete Valley Gutter		LF	\$95.00	\$0.00
D-03	6" Driveways (Concrete)	1,200	SF	\$10.00	\$12,000.00
D-04	5-FT Wide Concrete Sidewalks (4-inch)	2,600	SF	\$6.50	\$16,900.00
D-05	Curb Ramps	0	EA	\$3,450.00	\$0.00
D-06	Special Concrete Sidewalk w/ Integrated Retaining Wall (Stamped)	0	SY	\$332.00	\$0.00
D-07	Sodding and 4" Topsoil	0	SY	\$20.00	\$0.00
Section D Subtotal					\$48,430.00
Section E - Roadway Improvements					
E-01	Pavement Markings and Signage	1	LS	\$1,000.00	\$1,000.00
E-02	Type III Barricade	1	LS	\$5,000.00	\$5,000.00
Section E Subtotal					\$6,000.00
Section F - Water Improvements					
F-01	6-Inch Waterline (AWWA C900, Class 3, DR-18)	225	LF	\$75.00	\$16,875.00
F-02	Cast Iron Fittings	1	LS	\$2,500.00	\$2,500.00
F-02	Fire Hydrant Assembly	1	EA	\$6,500.00	\$6,500.00
F-03	6-Inch Gate Valve	3	EA	\$2,530.00	\$7,590.00
F-04	Water Line Trench Safety	225	LF	\$4.00	\$900.00
F-05	3/4-Inch Domestic Water Service	6	EA	\$1,500.00	\$9,000.00
F-06	Connect to Existing Water Line	1	EA	\$3,000.00	\$3,000.00
Section F Subtotal					\$46,365.00
Section G - Sanitary Sewer Improvements					
G-01	8-Inch SDR 35 PVC Sanitary Sewer Pipe	190	LF	\$100.00	\$19,000.00
G-02	4-FT Diameter Manhole	1	EA	\$6,000.00	\$6,000.00
G-03	4-Inch Domestic Service Connections with Double Cleanout	6	EA	\$1,500.00	\$9,000.00
G-04	Sewer Line Trench Safety	190	LF	\$4.00	\$760.00
G-05	Connection to Existing Sanitary Sewer	1	LS	\$2,500.00	\$2,500.00
Section G - Lighting Improvements					
G-01	Electrical Conduit, Connections and Light Pole Bases	1	LS	\$0.00	\$0.00
Section G Subtotal					\$0.00
TOTAL AMOUNT					\$213,419.00

Section A - General	\$10,000.00
Section B - Demolition	\$0.00
Section C - Asphalt Pavement	\$102,624.00
Section D - Curb, Gutter & Sidewalk	\$48,430.00
Section E - Roadway Improvements	\$6,000.00
Section F - Water Improvements	\$46,365.00
TOTAL	\$213,419.00
CONTINGENCY (0%)	\$0.00
ENGINEERING (0%)	\$0.00
GRAND TOTAL	\$213,419.00

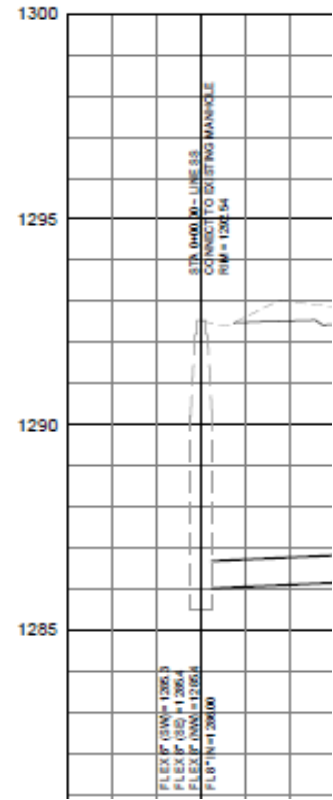
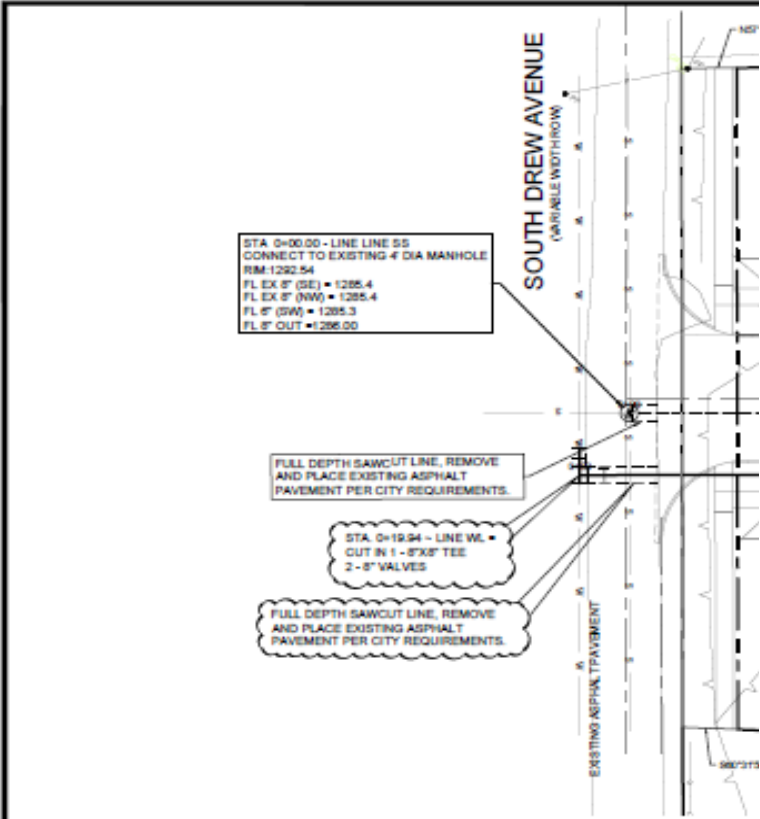
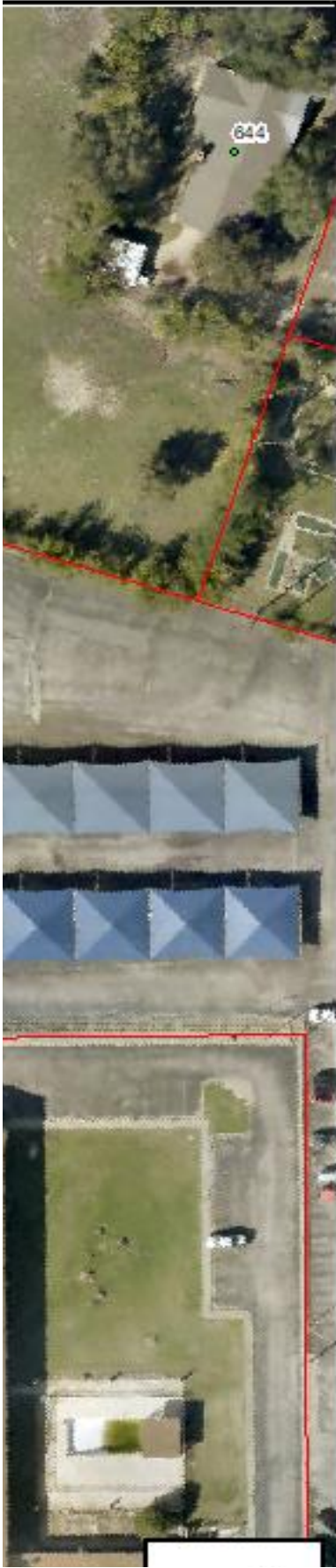


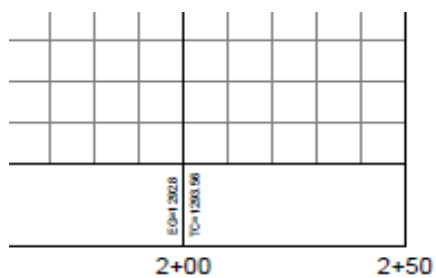


STREET A PROFILE



[illegible]





TRIM-2: CUT "X" IN CONCRETE.
ELEVATION=1286.474
N=6782717.312
E=2034674.896

Know what's below.
Call before you dig.

(@ least 48 hours prior to digging)

No.										PROJECT
<p>THESE PLANS ARE ISSUED FOR THE PURPOSE OF PRELIMINARY REVIEW AND ARE NOT INTENDED FOR CONSTRUCTION. WHEN ISSUED IN FLORIDA, THEY WILL BE SIGNED, SEALED, AND DATED BY:</p> <p>M. REECE FLANAGAN, P.E. TEXAS REGISTRATION NO. 126781</p> <p>DATE: October 15, 2024</p>										
<p>SHEET NUMBER</p> <p>C-2.2</p>										



Know what's below.
Call before you dig.

(@ least 48 hours prior to digging)

ISSUED IN FINAL FORM, THEY
WILL BE SIGNED, SEALED, AND
DATED BY:

M. REDDIE FLANAGAN, P.E.
TEXAS REGISTRATION NO.
126781

DATE: October 15, 2024

SHEET NUMBER

C-5.1