

Freese and Nichols, Inc.
Texas Registered Engineering Firm F-2144

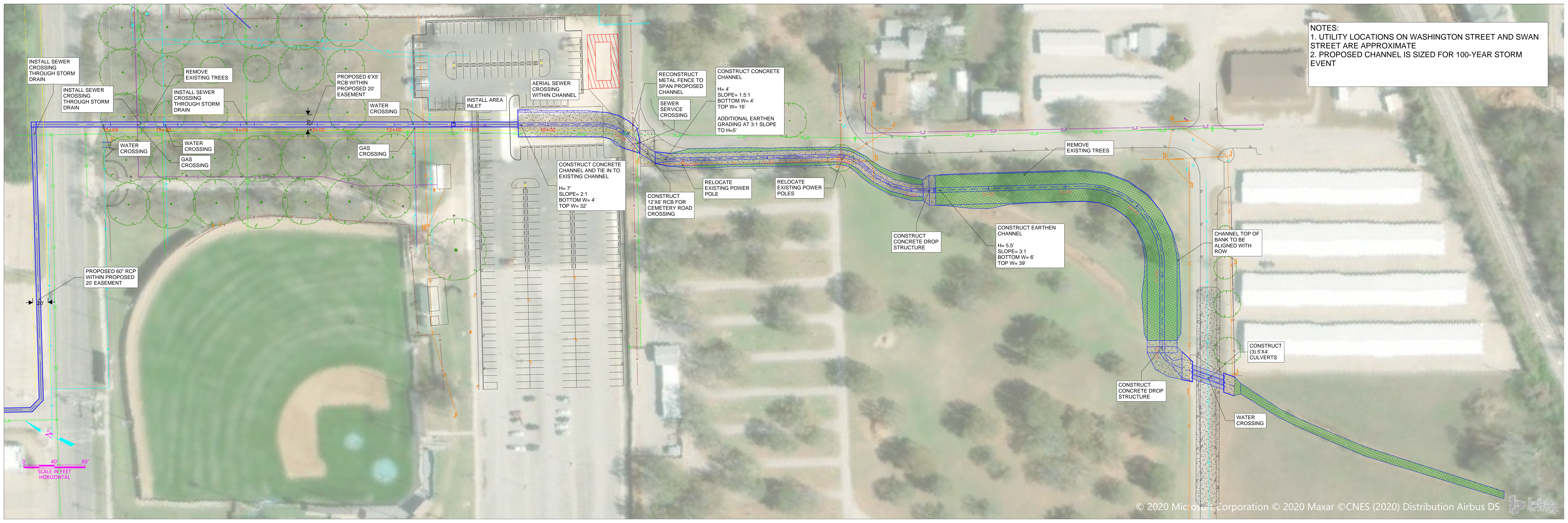
FRN JOB NO.	STE14477
DATE	OCT. 2020
SCALE	1"=200'
DESIGNED	EAS
DRAFTED	NBB

CITY OF STEPHENVILLE

PROPOSED IMPROVEMENTS LAYOUT

FN FRESE NICHOLS
4065 International Blvd., Suite 200
Frisco, TX 75034-4605
Phone - (817) 735-7300
Web - www.freese.com

1
FIGURE



NOTES:
 1. UTILITY LOCATIONS ON WASHINGTON STREET AND SWAN STREET ARE APPROXIMATE
 2. PROPOSED CHANNEL IS SIZED FOR 100-YEAR STORM EVENT

INSTALL SEWER CROSSING THROUGH STORM DRAIN

REMOVE EXISTING TREES

PROPOSED 6'X5' RCB WITHIN PROPOSED 20' EASEMENT

AERIAL SEWER CROSSING WITHIN CHANNEL

RECONSTRUCT METAL FENCE TO SPAN PROPOSED CHANNEL

CONSTRUCT CONCRETE CHANNEL
 H= 4'
 SLOPE= 1.5:1
 BOTTOM W= 4'
 TOP W= 16'
 ADDITIONAL EARTHEN GRADING AT 3:1 SLOPE TO H=5'

CONSTRUCT 12'X6' RCB FOR CEMETERY ROAD CROSSING

RELOCATE EXISTING POWER POLE

RELOCATE EXISTING POWER POLES

CONSTRUCT EARTHEN CHANNEL
 H= 5.5'
 SLOPE= 3:1
 BOTTOM W= 6'
 TOP W= 39'

CHANNEL TOP OF BANK TO BE ALIGNED WITH ROW

CONSTRUCT (3) 5'X4' CULVERTS

CONSTRUCT CONCRETE DROP STRUCTURE

WATER CROSSING

INSTALL SEWER CROSSING THROUGH STORM DRAIN

INSTALL SEWER CROSSING THROUGH STORM DRAIN

WATER CROSSING

INSTALL AREA INLET

SEWER SERVICE CROSSING

REMOVE EXISTING TREES

WATER CROSSING

WATER CROSSING

GAS CROSSING

GAS CROSSING

CONSTRUCT CONCRETE CHANNEL AND TIE IN TO EXISTING CHANNEL
 H= 7'
 SLOPE= 2:1
 BOTTOM W= 4'
 TOP W= 32'

PROPOSED 60" RCP WITHIN PROPOSED 20' EASEMENT

