



**WORK DIRECTIVE**

DATE OF ISSUANCE: \_\_\_\_\_

EFFECTIVE DATE: \_\_\_\_\_

OWNER City of Stephenville

CONTRACTOR Cruz Hernandez Concrete Construction

CONTRACT 2024 On-Call Public Works Construction Items (ITB #3334) Account No. \_\_\_\_\_

PROJECT NAME Rec Hall Parking Lot Improvements

**PROJECT SCOPE OF WORK**

#	Description of Item	ITB Item No.	Est. Qty.	Unit	Unit Cost	Amount
1	<b>PAVING</b> Concrete Sidewalk, 6" thick, 3000 psi concrete with reinforcement, including forms, complete in place.	31	4,300	SF	\$ 8.00	\$ 34,400.00
2	<b>BRICKS FOR STRIPING</b> Brick Street Repair: Removal and disposal of any excess base; compaction of base to minimum 6" depth; setting of City supplied replacement bricks to match existing brick bond pattern; and brooming off joints with cement stabilized brick sand.	48	13	SY	\$ 350.00	\$ 4,550.00
See Attached Exhibits					<b>TOTAL PROJECT COST</b>	<b>\$ 38,950.00</b>

Project Notes: Price includes all work for excavation to set forms, setting rebar, pouring and finishing concrete, as well as setting brick runners.

- Call for inspection of forms and rebar 24 hours prior to pouring of concrete.
- Any change to the scope of work must be agreed upon in writing by both parties.
- Measurements are estimated.

Anticipated Number of Construction Days \_\_\_\_\_  
 Anticipated Construction Start Date \_\_\_\_\_  
 Anticipated Construction End Date \_\_\_\_\_

**City Authorization Signatures**

**Contractor Acceptance Signature**

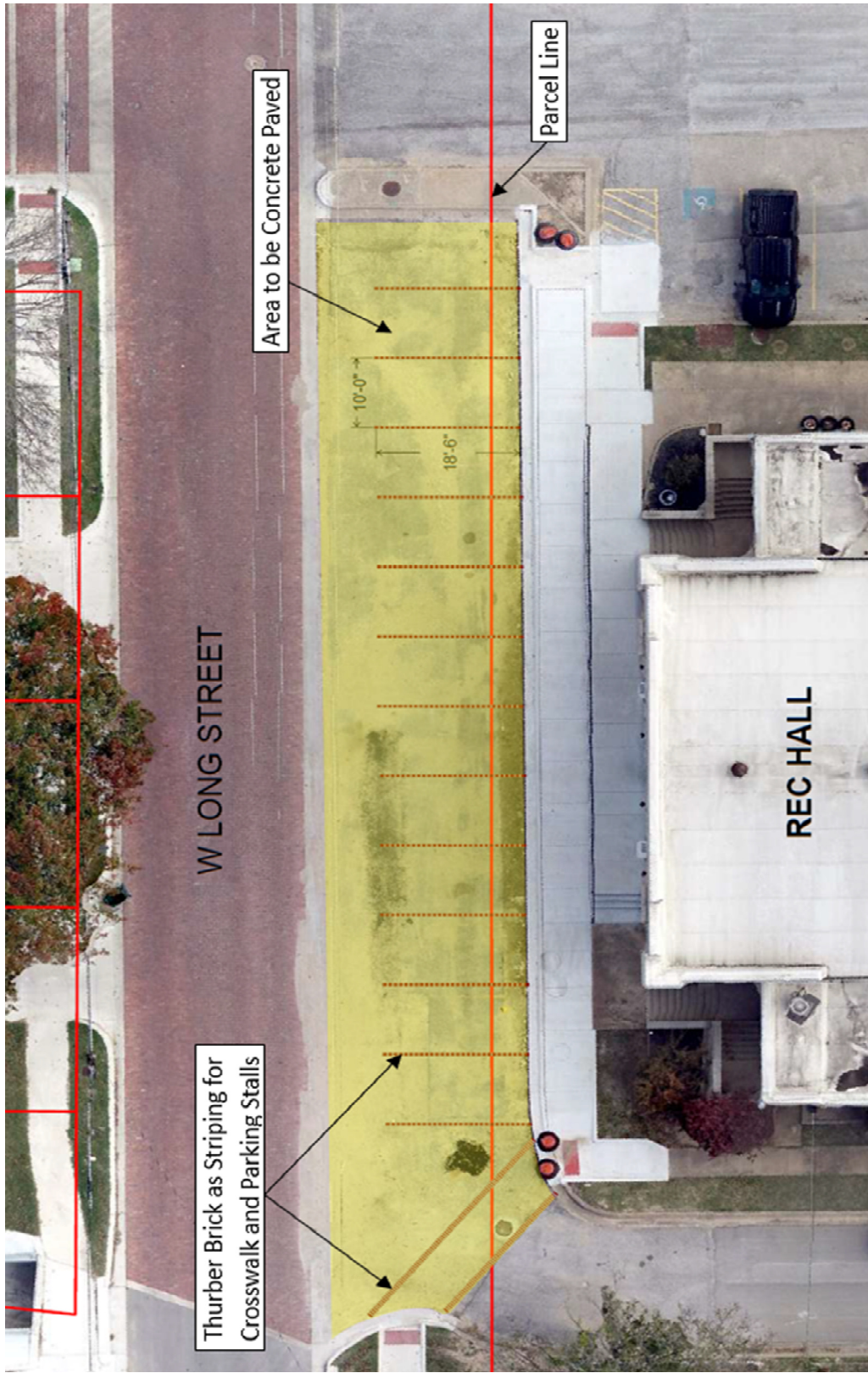
\_\_\_\_\_  
 Barbara Horton, P.E., CFM Date  
 Assistant Director of Public Works  
 298 West Washington Street  
 Stephenville, TX 76401  
 O: 254-918-1201

\_\_\_\_\_  
 Cruz Hernandez Date  
 Cruz Hernandez Concrete Construction  
 5595 CR 456  
 Stephenville, TX 76401  
 O: 254-968-3515, M: 254-977-2566

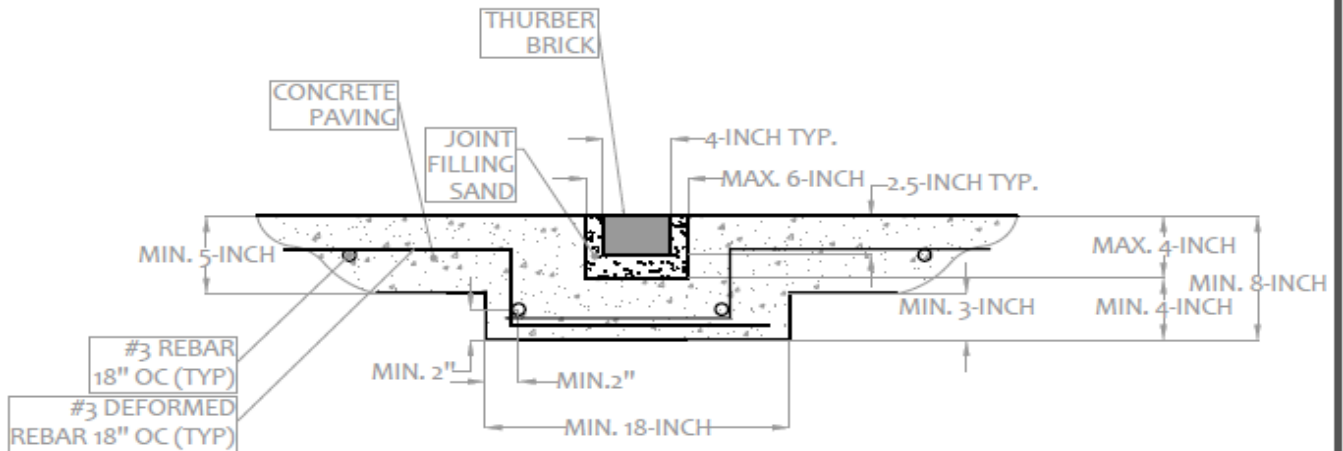
\_\_\_\_\_  
 Nick Williams, P.E., CFM Date  
 Director of Public Works  
 298 West Washington Street  
 Stephenville, TX 76401  
 O: 254-918-1292

**Note: Work Directive must be signed by contractor or contractor's authorized representative with authority to bind the company in this agreement.**

SITE LAYOUT

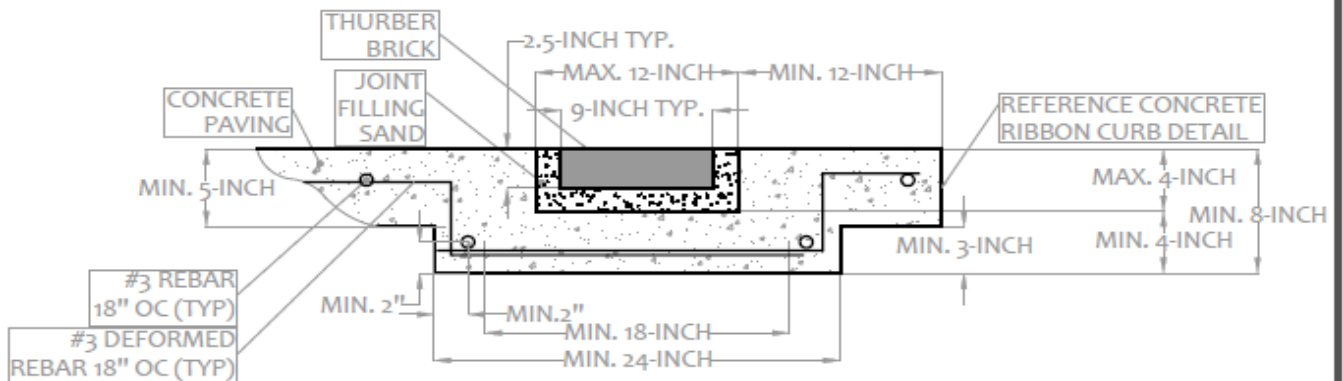


DETAILS



**SECTION THROUGH STRIPE**

NOT TO SCALE



**SECTION THROUGH CROSSWALK**

NOT TO SCALE

NOTES

1. CONTRACTOR SHALL USE EXTREME CARE WHILE INSTALLING BRICK PAVERS. BRICK PAVERS ARE HISTORIC AND CANNOT BE REPLACED.
2. BRICK DIVIDER SECTIONS: 8-INCH THICK BY 18-INCH WIDE WITH #3 AT MAX. 18-INCH OC.
3. TOP OF BRICKS MUST BE FLUSH WITH TOP OF CONCRETE.

INCLUDING THE CITY OF STEPHENVILLE STANDARD CONSTRUCTION DETAIL IN CONSTRUCTION DRAWING SET DOES NOT RELIEVE THE SEALING ENGINEER FROM THE RESPONSIBILITY FOR THE SPECIFIC PROJECT DESIGN. THESE DETAILS SHOULD BE CONSIDERED MINIMUM STANDARDS WHICH THE SEALING ENGINEER MAY MODIFY TO MEET SITE SPECIFIC DESIGN REQUIREMENTS.



DETAIL  
BRICK PAVING STRIPE

Revision:  
Jan. 2024

N01