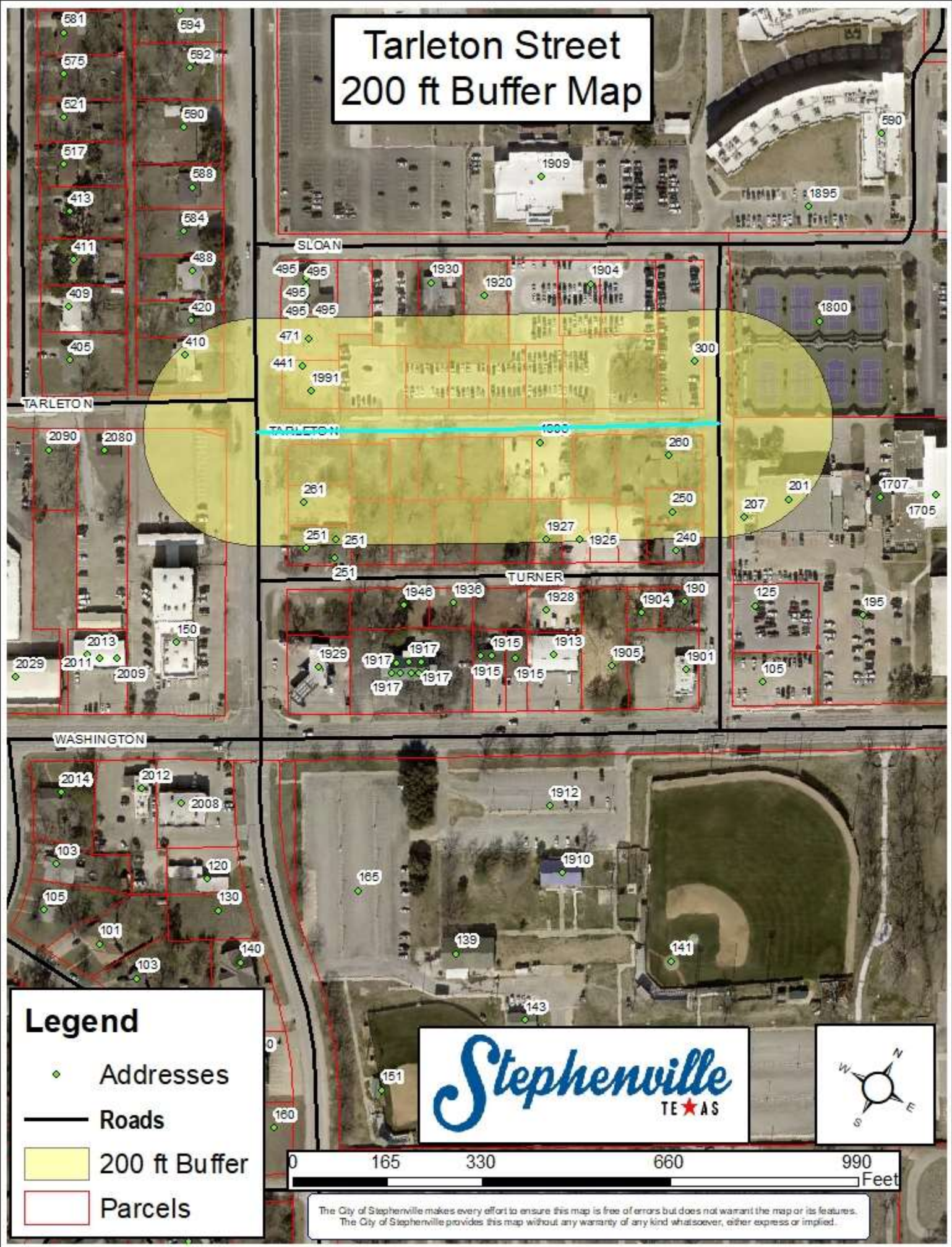


# Tarleton Street 200 ft Buffer Map



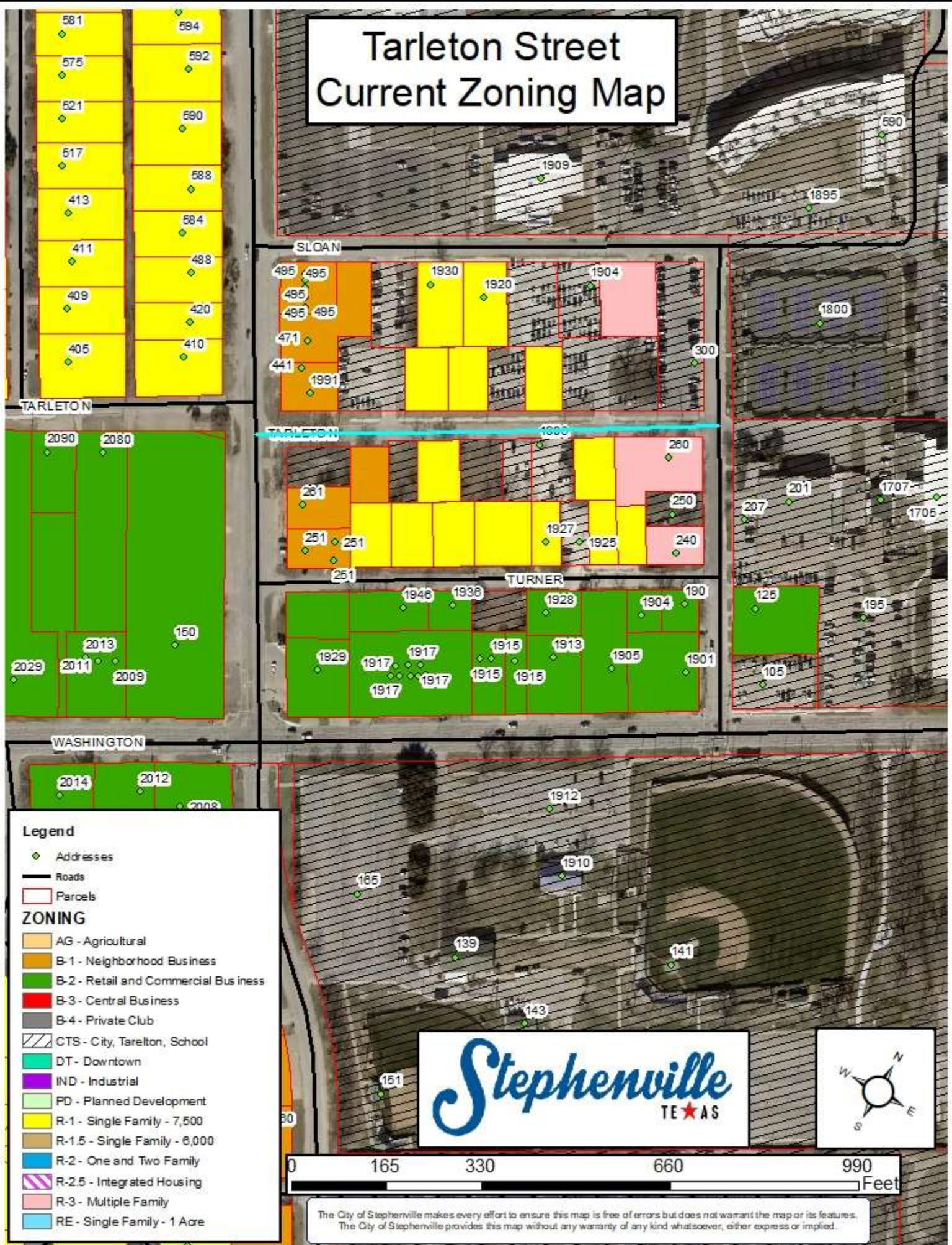
## Legend

- ◆ Addresses
- Roads
- 200 ft Buffer
- ▭ Parcels



The City of Stephenville makes every effort to ensure this map is free of errors but does not warrant the map or its features. The City of Stephenville provides this map without any warranty of any kind whatsoever, either express or implied.

# Tarleton Street Current Zoning Map



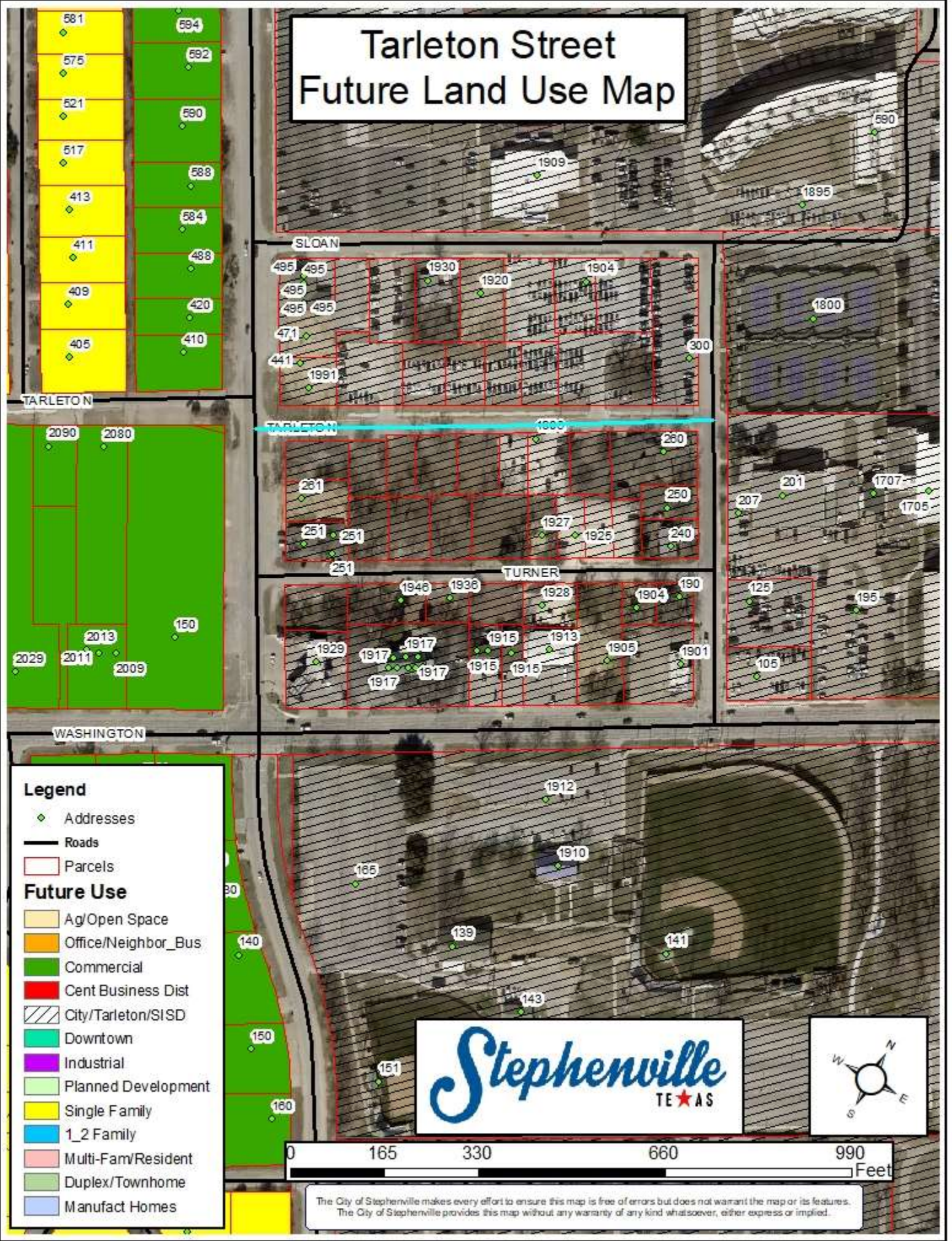
### Legend

- ◆ Addresses
  - Roads
  - ▭ Parcels
- ### ZONING
- AG - Agricultural
  - B-1 - Neighborhood Business
  - B-2 - Retail and Commercial Business
  - B-3 - Central Business
  - B-4 - Private Club
  - CTS - City, Tarleton, School
  - DT - Downtown
  - IND - Industrial
  - PD - Planned Development
  - R-1 - Single Family - 7,500
  - R-1.5 - Single Family - 6,000
  - R-2 - One and Two Family
  - R-2.5 - Integrated Housing
  - R-3 - Multiple Family
  - RE - Single Family - 1 Acre



The City of Stephenville makes every effort to ensure this map is free of errors but does not warrant the map or its features. The City of Stephenville provides this map without any warranty of any kind whatsoever, either express or implied.

# Tarleton Street Future Land Use Map



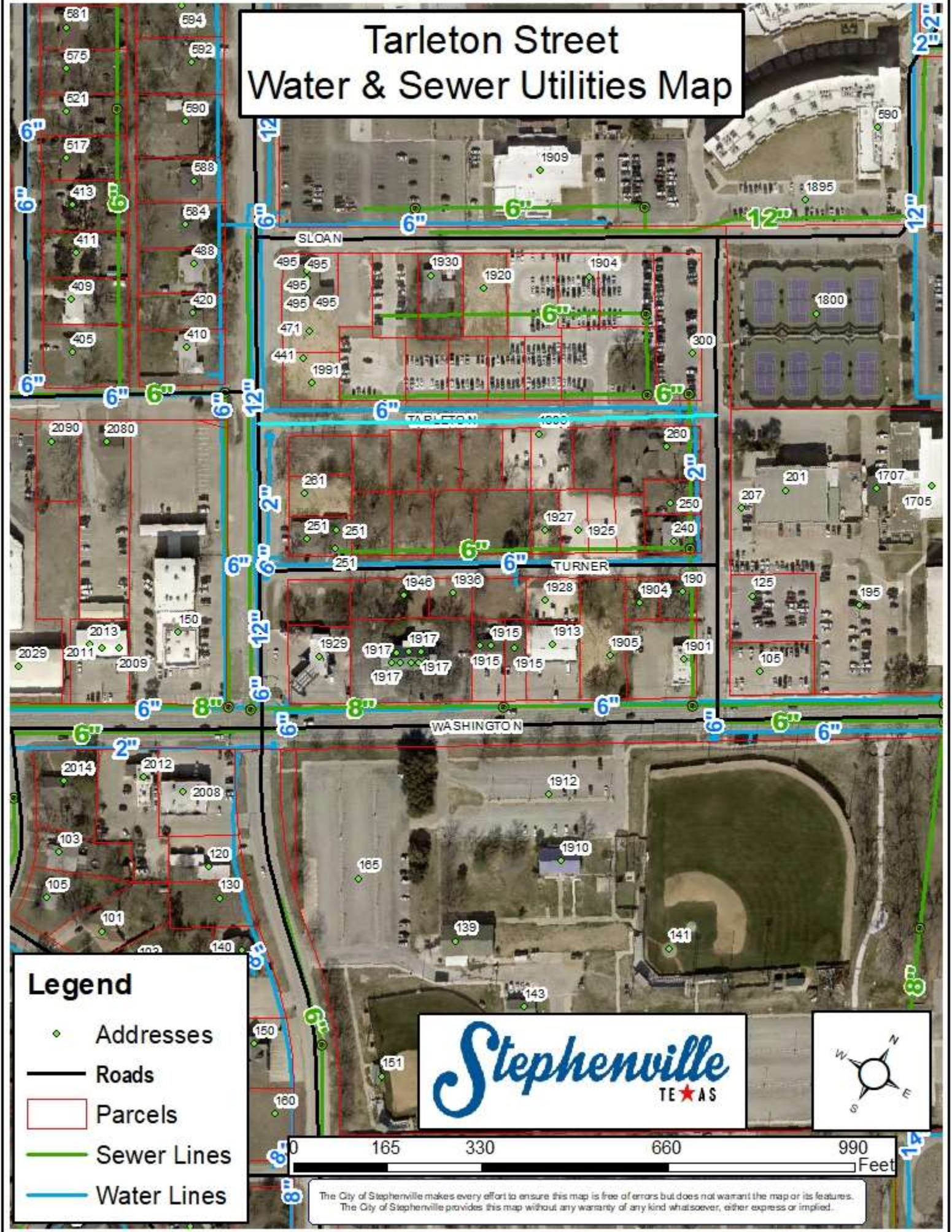
## Legend

- ◆ Addresses
  - Roads
  - Parcels
- ### Future Use
- Ag/Open Space
  - Office/Neighbor\_Bus
  - Commercial
  - Cent Business Dist
  - City/Tarleton/SISD
  - Downtown
  - Industrial
  - Planned Development
  - Single Family
  - 1\_2 Family
  - Multi-Fam/Resident
  - Duplex/Townhome
  - Manufact Homes



The City of Stephenville makes every effort to ensure this map is free of errors but does not warrant the map or its features. The City of Stephenville provides this map without any warranty of any kind whatsoever, either express or implied.

# Tarleton Street Water & Sewer Utilities Map



**Legend**

- ◆ Addresses
- Roads
- ▭ Parcels
- Sewer Lines
- Water Lines



The City of Stephenville makes every effort to ensure this map is free of errors but does not warrant the map or its features. The City of Stephenville provides this map without any warranty of any kind whatsoever, either express or implied.

# Tarleton Street Address List

Parcel ID	Parcel Address	Parcel Owner	Owner Address	City	State	Zip Code
R000032899	1919 W TARLETON	BOARD OF REGENTS OF THE TX A&M UNIVERSITY SYSTEM	301 TARROW STREET 6TH FLOOR	COLLEGE STATION	TX	77840-7896
R000032898	1917 TARLETON	BOARD OF REGENTS OF THE TX A&M UNIVERSITY SYSTEM	301 TARROW STREET 6TH FLOOR	COLLEGE STATION	TX	77840-7896
R000032020	250 ST FELIX AVE	BOARD OF REGENTS OF THE TX A&M UNIVERSITY SYSTEM	301 TARROW STREET 6TH FLOOR	COLLEGE STATION	TX	77840-7896
R000032022	1925 TURNER	BOARD OF REGENTS OF THE TX A&M UNIVERSITY SYSTEM	301 TARROW STREET 6TH FLOOR	COLLEGE STATION	TX	77840-7896
R000032023	1927 TURNER	BOARD OF REGENTS OF THE TX A&M UNIVERSITY SYSTEM	301 TARROW STREET 6TH FLOOR	COLLEGE STATION	TX	77840-7896
R000032031	1950 TARLETON	BOARD OF REGENTS OF THE TX A&M UNIVERSITY SYSTEM	301 TARROW STREET 6TH FLOOR	COLLEGE STATION	TX	77840-7896
R000032032	1940 TARLETON	BOARD OF REGENTS OF THE TX A&M UNIVERSITY SYSTEM	301 TARROW STREET 6TH FLOOR	COLLEGE STATION	TX	77840-7896
R000032035	1908 W TARLETON	BOARD OF REGENTS OF THE TX A&M UNIVERSITY SYSTEM	301 TARROW STREET 6TH FLOOR	COLLEGE STATION	TX	77840-7896
R000032903	1923 TARLETON	BOARD OF REGENTS OF THE TX A&M UNIVERSITY SYSTEM	301 TARROW STREET 6TH FLOOR	COLLEGE STATION	TX	77840-7896
R000032902	1921 TARLETON	BOARD OF REGENTS OF THE TX A&M UNIVERSITY SYSTEM	301 TARROW STREET 6TH FLOOR	COLLEGE STATION	TX	77840-7896
R000032025	1931 TURNER	BOARD OF REGENTS OF THE TX A&M UNIVERSITY SYSTEM	301 TARROW STREET 6TH FLOOR	COLLEGE STATION	TX	77840-7896
R000032026	1941 TURNER	BOARD OF REGENTS OF THE TX A&M UNIVERSITY SYSTEM	301 TARROW STREET 6TH FLOOR	COLLEGE STATION	TX	77840-7896
R000032027	1951 TURNER	BOARD OF REGENTS OF THE TX A&M UNIVERSITY SYSTEM	301 TARROW STREET 6TH FLOOR	COLLEGE STATION	TX	77840-7896
R000032029	261 N HARBIN DR	BOARD OF REGENTS OF THE TX A&M UNIVERSITY SYSTEM	301 TARROW STREET 6TH FLOOR	COLLEGE STATION	TX	77840-7896
R000032030	271 N HARBIN DR	BOARD OF REGENTS OF THE TX A&M UNIVERSITY SYSTEM	301 TARROW STREET 6TH FLOOR	COLLEGE STATION	TX	77840-7896
R000032034	1910 W TARLETON	BOARD OF REGENTS OF THE TX A&M UNIVERSITY SYSTEM	301 TARROW STREET 6TH FLOOR	COLLEGE STATION	TX	77840-7896
R000032033	1930 TARLETON	BOARD OF REGENTS OF THE TX A&M UNIVERSITY SYSTEM	301 TARROW STREET 6TH FLOOR	COLLEGE STATION	TX	77840-7896
R000032036	1906 W TARLETON	BOARD OF REGENTS OF THE TX A&M UNIVERSITY SYSTEM	301 TARROW STREET 6TH FLOOR	COLLEGE STATION	TX	77840-7896
R000032037	1904 TARLETON	BOARD OF REGENTS OF THE TX A&M UNIVERSITY SYSTEM	301 TARROW STREET 6TH FLOOR	COLLEGE STATION	TX	77840-7896
R000032911	1991 W TARLETON	BOARD OF REGENTS OF THE TX A&M UNIVERSITY SYSTEM	301 TARROW STREET 6TH FLOOR	COLLEGE STATION	TX	77840-7896
R000032907	471 N HARBIN DR	BOARD OF REGENTS OF THE TX A&M UNIVERSITY SYSTEM	301 TARROW STREET 6TH FLOOR	COLLEGE STATION	TX	77840-7896
R000032024	1929 TURNER	BOARD OF REGENTS OF THE TX A&M UNIVERSITY SYSTEM	301 TARROW STREET 6TH FLOOR	COLLEGE STATION	TX	77840-7896
R000032895	1915 W TARLETON	BOARD OF REGENTS OF THE TX A&M UNIVERSITY SYSTEM	301 TARROW STREET 6TH FLOOR	COLLEGE STATION	TX	77840-7896
R000032896	1906 W SLOAN	BOARD OF REGENTS OF THE TX A&M UNIVERSITY SYSTEM	301 TARROW STREET 6TH FLOOR	COLLEGE STATION	TX	77840-7896
R000032021	1921 TURNER	BOARD OF REGENTS OF THE TX A&M UNIVERSITY SYSTEM	301 TARROW STREET 6TH FLOOR	COLLEGE STATION	TX	77840-7896
R000032897	1902 W SLOAN	BOARD OF REGENTS OF THE TX A&M UNIVERSITY SYSTEM	301 TARROW STREET 6TH FLOOR	COLLEGE STATION	TX	77840-7896
R000032901	1910 W SLOAN	BOARD OF REGENTS OF THE TX A&M UNIVERSITY SYSTEM	301 TARROW STREET 6TH FLOOR	COLLEGE STATION	TX	77840-7896
R000032900	1920 SLOAN	BOARD OF REGENTS OF THE TX A&M UNIVERSITY SYSTEM	301 TARROW STREET 6TH FLOOR	COLLEGE STATION	TX	77840-7896
R000032906	1930 SLOAN	BOARD OF REGENTS OF THE TX A&M UNIVERSITY SYSTEM	301 TARROW STREET 6TH FLOOR	COLLEGE STATION	TX	77840-7896
R000032905	1940 W SLOAN	BOARD OF REGENTS OF THE TX A&M UNIVERSITY SYSTEM	301 TARROW STREET 6TH FLOOR	COLLEGE STATION	TX	77840-7896
R000032904	1989 W TARLETON	BOARD OF REGENTS OF THE TX A&M UNIVERSITY SYSTEM	301 TARROW STREET 6TH FLOOR	COLLEGE STATION	TX	77840-7896
R000074175	0 TURNER	BOARD OF REGENTS OF THE TX A&M UNIVERSITY SYSTEM	301 TARROW STREET 6TH FLOOR	COLLEGE STATION	TX	77840-7896
R000032013	1701 W WASHINGTON	BOARD OF REGENTS OF THE TX A&M UNIVERSITY SYSTEM	301 TARROW STREET 6TH FLOOR	COLLEGE STATION	TX	77840-7896
R000032893	201 ST FELIX AVE	BOARD OF REGENTS OF THE TX A&M UNIVERSITY SYSTEM	301 TARROW STREET 6TH FLOOR	COLLEGE STATION	TX	77840-7896
R000031936	420 HARBIN DR	BORGES JOSEPH JOAQUIN	PO BOX 1201	STEPHENVILLE	TX	76401
R000077048	0 N HARBIN DR	CITY OF STEPHENVILLE	298 W WASHINGTON	STEPHENVILLE	TX	76401-4257
R000032019	240 ST FELIX AVE	COATS JIM & PATSY	1187 AZALEA LN	STEPHENVILLE	TX	76401-0000
R000031937	410 N HARBIN DR	GALLAGHER JERRY VON JR& CARRIE GALLAGHER	4209 CR 826	ANNA	TX	75409
R000032038	260 ST FELIX AVE	HOWARD DON & OLA FAYE	5441 S US377	STEPHENVILLE	TX	76401-9628
R000032028	251 N HARBIN DR	KINCANNON DAVID	PO BOX 36	STEPHENVILLE	TX	76401
R000030321	150 N HARBIN DR	STEPHENVILLE INTERBANK	PO BOX 1157	STEPHENVILLE	TX	76401