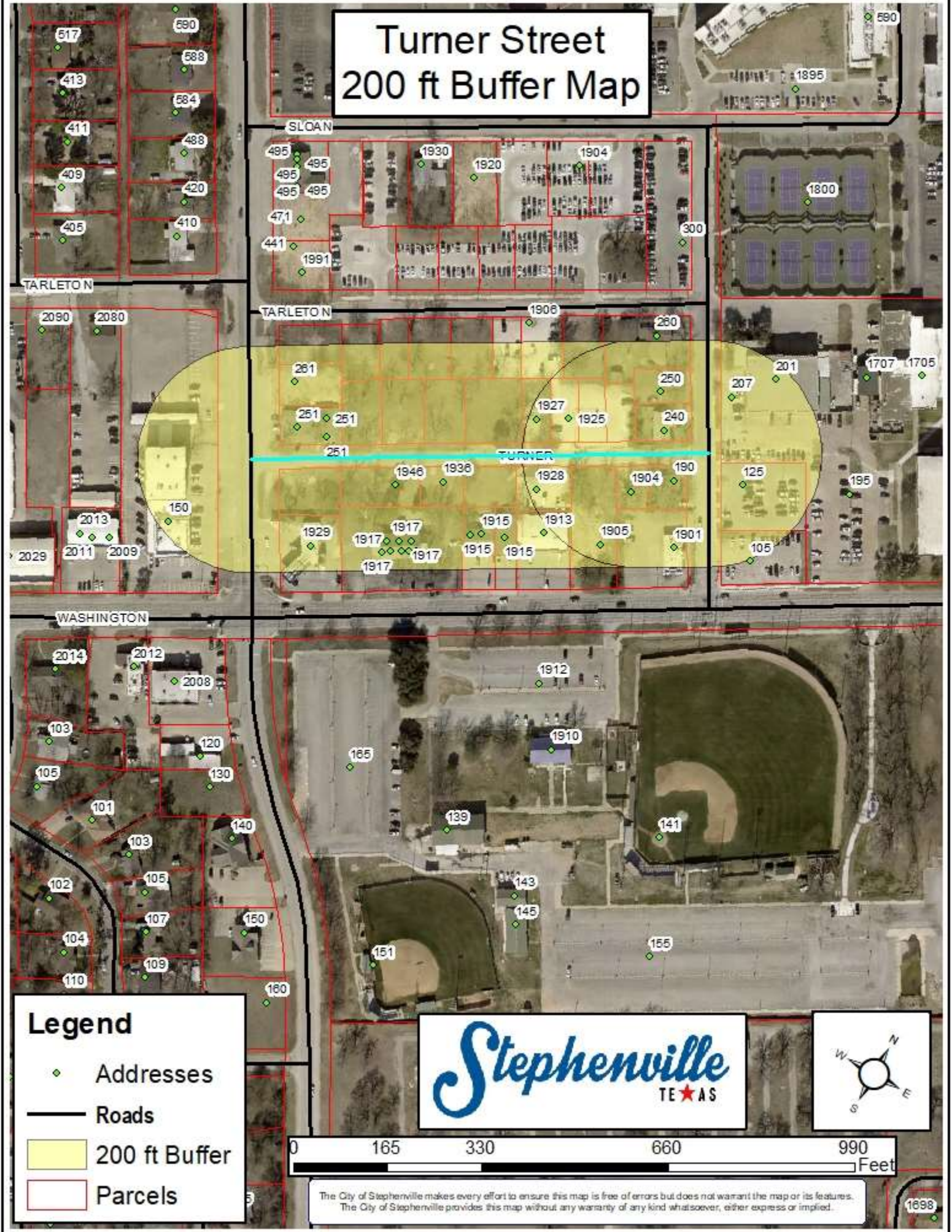


Turner Street 200 ft Buffer Map



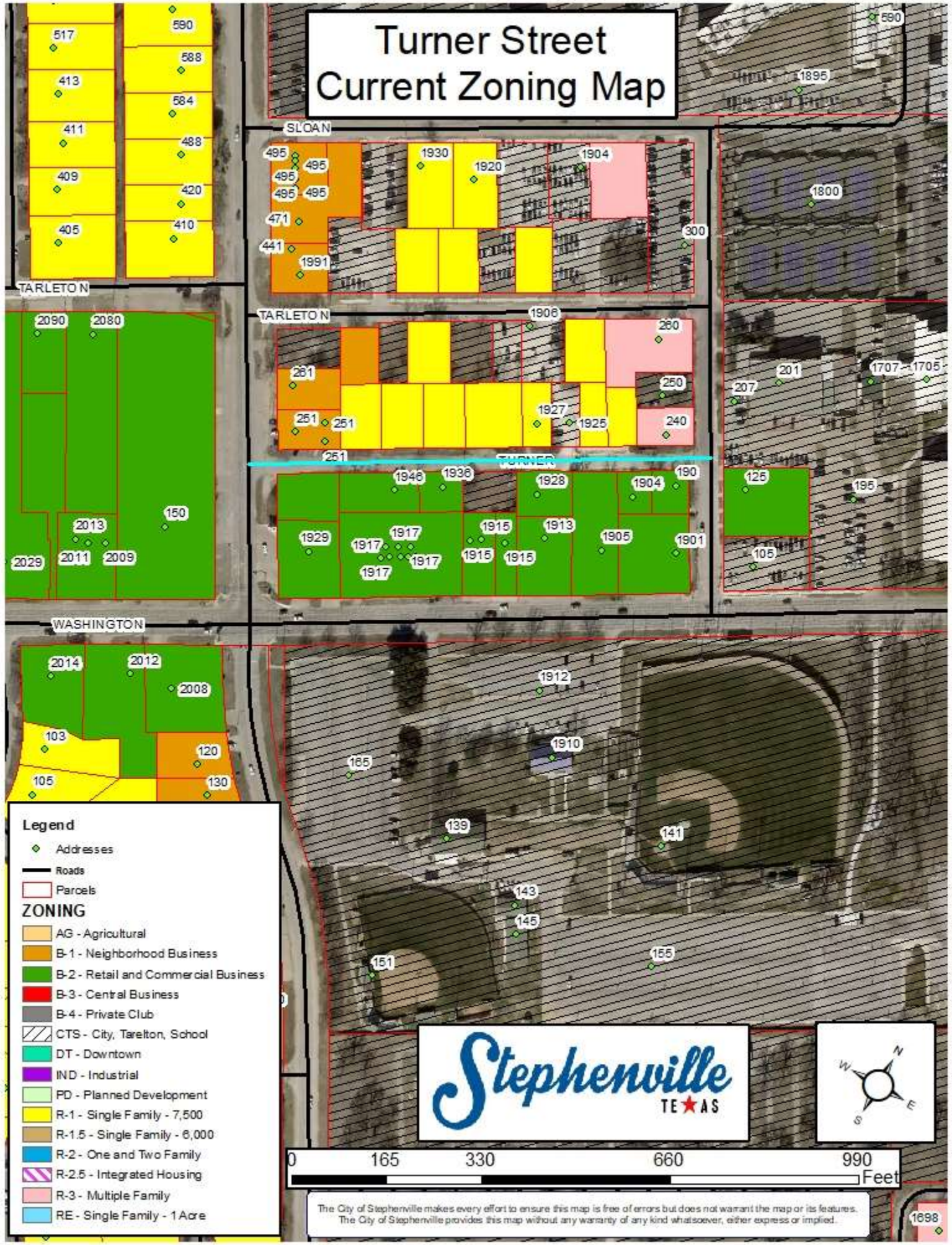
Legend

- ◆ Addresses
- Roads
- 200 ft Buffer
- Parcels



The City of Stephenville makes every effort to ensure this map is free of errors but does not warrant the map or its features. The City of Stephenville provides this map without any warranty of any kind whatsoever, either express or implied.

Turner Street Current Zoning Map



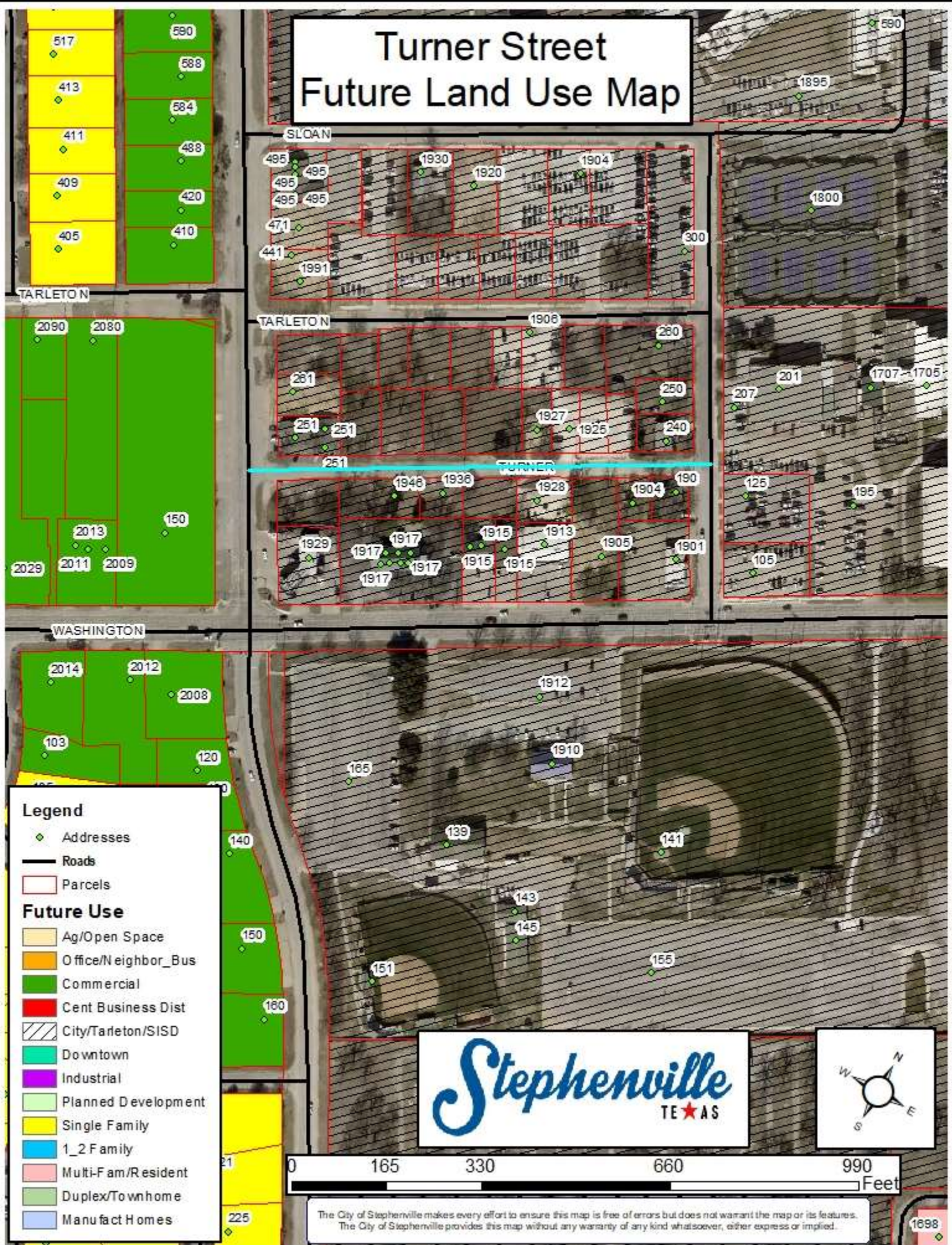
Legend

- ◆ Addresses
 - Roads
 - ▭ Parcels
- ### ZONING
- AG - Agricultural
 - B-1 - Neighborhood Business
 - B-2 - Retail and Commercial Business
 - B-3 - Central Business
 - B-4 - Private Club
 - CTS - City, Tarleton, School
 - DT - Downtown
 - IND - Industrial
 - PD - Planned Development
 - R-1 - Single Family - 7,500
 - R-1.5 - Single Family - 6,000
 - R-2 - One and Two Family
 - R-2.5 - Integrated Housing
 - R-3 - Multiple Family
 - RE - Single Family - 1 Acre



The City of Stephenville makes every effort to ensure this map is free of errors but does not warrant the map or its features. The City of Stephenville provides this map without any warranty of any kind whatsoever, either express or implied.

Turner Street Future Land Use Map



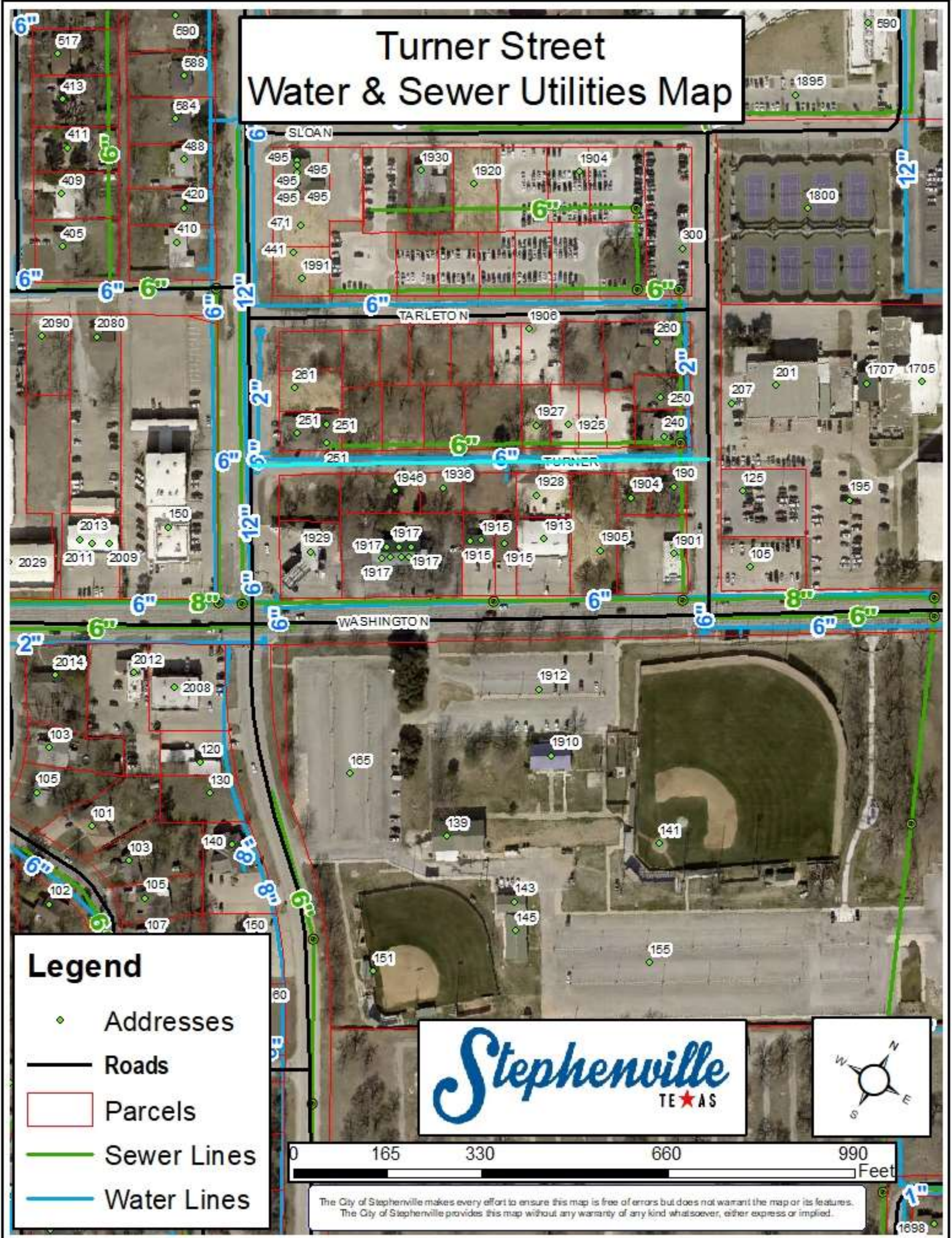
Legend

- ◆ Addresses
- Roads
- Parcels
- Future Use**
- Ag/Open Space
- Office/Neighbor_Bus
- Commercial
- Cent Business Dist
- City/Tarleton/SISD
- Downtown
- Industrial
- Planned Development
- Single Family
- 1_2 Family
- Multi-F am/Resident
- Duplex/Townhome
- Manufact Homes



The City of Stephenville makes every effort to ensure this map is free of errors but does not warrant the map or its features. The City of Stephenville provides this map without any warranty of any kind whatsoever, either express or implied.

Turner Street Water & Sewer Utilities Map



Legend

- ◆ Addresses
- Roads
- Parcels
- Sewer Lines
- Water Lines



The City of Stephenville makes every effort to ensure this map is free of errors but does not warrant the map or its features. The City of Stephenville provides this map without any warranty of any kind whatsoever, either express or implied.

1698

Turner Street Address List

Parcel ID	Parcel Address	Parcel Owner	Owner Address	City	State	Zip Code
R000032039	1901 W WASHINGTON	BACHUS JAMES O FAMILY TRUST	PO BOX 552	STEPHENVILLE	TX	76401
R000032047	1936 TURNER	BOARD OF REGENTS OF THE TX A&M UNIVERSITY SYSTEM	301 TARROW STREET 6TH FLOOR	COLLEGE STATION	TX	77840-7896
R000032050	1904 TURNER	BOARD OF REGENTS OF THE TX A&M UNIVERSITY SYSTEM	301 TARROW STREET 6TH FLOOR	COLLEGE STATION	TX	77840-7896
R000032020	250 ST FELIX AVE	BOARD OF REGENTS OF THE TX A&M UNIVERSITY SYSTEM	301 TARROW STREET 6TH FLOOR	COLLEGE STATION	TX	77840-7896
R000032022	1925 TURNER	BOARD OF REGENTS OF THE TX A&M UNIVERSITY SYSTEM	301 TARROW STREET 6TH FLOOR	COLLEGE STATION	TX	77840-7896
R000032023	1927 TURNER	BOARD OF REGENTS OF THE TX A&M UNIVERSITY SYSTEM	301 TARROW STREET 6TH FLOOR	COLLEGE STATION	TX	77840-7896
R000032031	1950 TARLETON	BOARD OF REGENTS OF THE TX A&M UNIVERSITY SYSTEM	301 TARROW STREET 6TH FLOOR	COLLEGE STATION	TX	77840-7896
R000032032	1940 TARLETON	BOARD OF REGENTS OF THE TX A&M UNIVERSITY SYSTEM	301 TARROW STREET 6TH FLOOR	COLLEGE STATION	TX	77840-7896
R000032035	1908 W TARLETON	BOARD OF REGENTS OF THE TX A&M UNIVERSITY SYSTEM	301 TARROW STREET 6TH FLOOR	COLLEGE STATION	TX	77840-7896
R000032025	1931 TURNER	BOARD OF REGENTS OF THE TX A&M UNIVERSITY SYSTEM	301 TARROW STREET 6TH FLOOR	COLLEGE STATION	TX	77840-7896
R000032026	1941 TURNER	BOARD OF REGENTS OF THE TX A&M UNIVERSITY SYSTEM	301 TARROW STREET 6TH FLOOR	COLLEGE STATION	TX	77840-7896
R000032027	1951 TURNER	BOARD OF REGENTS OF THE TX A&M UNIVERSITY SYSTEM	301 TARROW STREET 6TH FLOOR	COLLEGE STATION	TX	77840-7896
R000032029	261 N HARBIN DR	BOARD OF REGENTS OF THE TX A&M UNIVERSITY SYSTEM	301 TARROW STREET 6TH FLOOR	COLLEGE STATION	TX	77840-7896
R000032030	271 N HARBIN DR	BOARD OF REGENTS OF THE TX A&M UNIVERSITY SYSTEM	301 TARROW STREET 6TH FLOOR	COLLEGE STATION	TX	77840-7896
R000032034	1910 W TARLETON	BOARD OF REGENTS OF THE TX A&M UNIVERSITY SYSTEM	301 TARROW STREET 6TH FLOOR	COLLEGE STATION	TX	77840-7896
R000032033	1930 TARLETON	BOARD OF REGENTS OF THE TX A&M UNIVERSITY SYSTEM	301 TARROW STREET 6TH FLOOR	COLLEGE STATION	TX	77840-7896
R000032036	1906 W TARLETON	BOARD OF REGENTS OF THE TX A&M UNIVERSITY SYSTEM	301 TARROW STREET 6TH FLOOR	COLLEGE STATION	TX	77840-7896
R000032037	1904 TARLETON	BOARD OF REGENTS OF THE TX A&M UNIVERSITY SYSTEM	301 TARROW STREET 6TH FLOOR	COLLEGE STATION	TX	77840-7896
R000032048	1930 TURNER	BOARD OF REGENTS OF THE TX A&M UNIVERSITY SYSTEM	301 TARROW STREET 6TH FLOOR	COLLEGE STATION	TX	77840-7896
R000032049	1928 TURNER	BOARD OF REGENTS OF THE TX A&M UNIVERSITY SYSTEM	301 TARROW STREET 6TH FLOOR	COLLEGE STATION	TX	77840-7896
R000032045	191 N HARBIN DR	BOARD OF REGENTS OF THE TX A&M UNIVERSITY SYSTEM	301 TARROW STREET 6TH FLOOR	COLLEGE STATION	TX	77840-7896
R000032024	1929 TURNER	BOARD OF REGENTS OF THE TX A&M UNIVERSITY SYSTEM	301 TARROW STREET 6TH FLOOR	COLLEGE STATION	TX	77840-7896
R000032046	1946 TURNER	BOARD OF REGENTS OF THE TX A&M UNIVERSITY SYSTEM	301 TARROW STREET 6TH FLOOR	COLLEGE STATION	TX	77840-7896
R000032021	1921 TURNER	BOARD OF REGENTS OF THE TX A&M UNIVERSITY SYSTEM	301 TARROW STREET 6TH FLOOR	COLLEGE STATION	TX	77840-7896
R000032040	1905 W WASHINGTON	BOARD OF REGENTS OF THE TX A&M UNIVERSITY SYSTEM	301 TARROW STREET 6TH FLOOR	COLLEGE STATION	TX	77840-7896
R000032018	0 N SAINT FELIX AVE	BOARD OF REGENTS OF THE TX A&M UNIVERSITY SYSTEM	301 TARROW STREET 6TH FLOOR	COLLEGE STATION	TX	77840-7896
R000074175	0 TURNER	BOARD OF REGENTS OF THE TX A&M UNIVERSITY SYSTEM	301 TARROW STREET 6TH FLOOR	COLLEGE STATION	TX	77840-7896
R000050736	125 N SAINT FELIX	BOARD OF REGENTS OF THE TX A&M UNIVERSITY SYSTEM	301 TARROW STREET 6TH FLOOR	COLLEGE STATION	TX	77840-7896
R000032041	1913 W WASHINGTON	BOARD OF REGENTS OF THE TX A&M UNIVERSITY SYSTEM	301 TARROW STREET 6TH FLOOR	COLLEGE STATION	TX	77840-7896
R000032013	1701 W WASHINGTON	BOARD OF REGENTS OF THE TX A&M UNIVERSITY SYSTEM	301 TARROW STREET 6TH FLOOR	COLLEGE STATION	TX	77840-7896
R000032019	240 ST FELIX AVE	COATS JIM & PATSY	1187 AZALEA LN	STEPHENVILLE	TX	76401-0000
R000032038	260 ST FELIX AVE	HOWARD DON & OLA FAYE	5441 S US377	STEPHENVILLE	TX	76401-9628
R000032051	190 ST FELIX AVE	IVORY CHARLES B & LAURA A	6455 RIDGELEA CREST DR	FORT WORTH	TX	76116
R000032028	251 N HARBIN DR	KINCANNON DAVID	PO BOX 36	STEPHENVILLE	TX	76401
R000032044	1929 W WASHINGTON	RARA LLC	355 W OAK APT 4	STEPHENVILLE	TX	76401
R000030321	150 N HARBIN DR	STEPHENVILLE INTERBANK	PO BOX 1157	STEPHENVILLE	TX	76401
R000032043	1917 W WASHINGTON	STEPHENVILLE RENTALS LLC	181 S GRAHAM	STEPHENVILLE	TX	76401
R000076230	1915 W WASHINGTON	STEPHENVILLE RENTALS LLC	181 S GRAHAM	STEPHENVILLE	TX	76401
R000032042	1915 W WASHINGTON	STEPHENVILLE RENTALS LLC ET AL	181 S GRAHAM	STEPHENVILLE	TX	76401