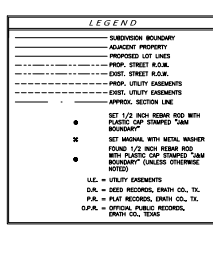


LINE TABLE and CURVE TABLE. The LINE TABLE lists line numbers, lengths, and directions. The CURVE TABLE lists curve data including chord length, angle, tangent, bearing, and length.

Table with 5 columns: CURVE NO., CHORD LENGTH, ANGLE, TANGENT, BEARING, CHORD LENGTH. Contains data for multiple curves in the subdivision.



LEGEND defining symbols for SUBDIVISION BOUNDARY, ADJACENT PROPERTY, PROPOSED LOT LINES, PROP. STREET R.O.W., EXIST. STREET R.O.W., PROP. UTILITY EASEMENTS, EXIST. UTILITY EASEMENTS, CHAN. UTILITY EASEMENTS, and APPROX. SECTION LINE.

PLAT NOTES: 1. THIS SUBDIVISION IS 4.55 ACRES AREA OF ALL PUBLIC R.O.W. DESIGNATIONS IS 4.55 ACRES... 2. THE PORTION OF THIS SUBDIVISION LIES WITHIN THE 100-YEAR FLOODPLAIN... 3. THE PORTION OF THIS SUBDIVISION WILL BE DEDICATED FOR PARKS, OR OPEN SPACE...

TARLETON CROSSING BEING A REPLAT OF 4.55 ACRES OUT OF LOT 15, BLOCK 19, SOUTHSIDE ADDITION, AN ADDITION TO THE CITY OF STEPHENVILLE, ERATH COUNTY, TEXAS...

DEVELOPER/SUBDIVIDER: KEWAYDIN DEVELOPMENTS, LLC. 159 S GRAHAM ST STEPHENVILLE, TEXAS 76401 254-918-7500

Official subdivision plat form including sections for COUNTY CLERK, OWNER'S CERTIFICATE AND DEDICATION, ACKNOWLEDGMENT, and a PRELIMINARY notations box with a signature line and date.