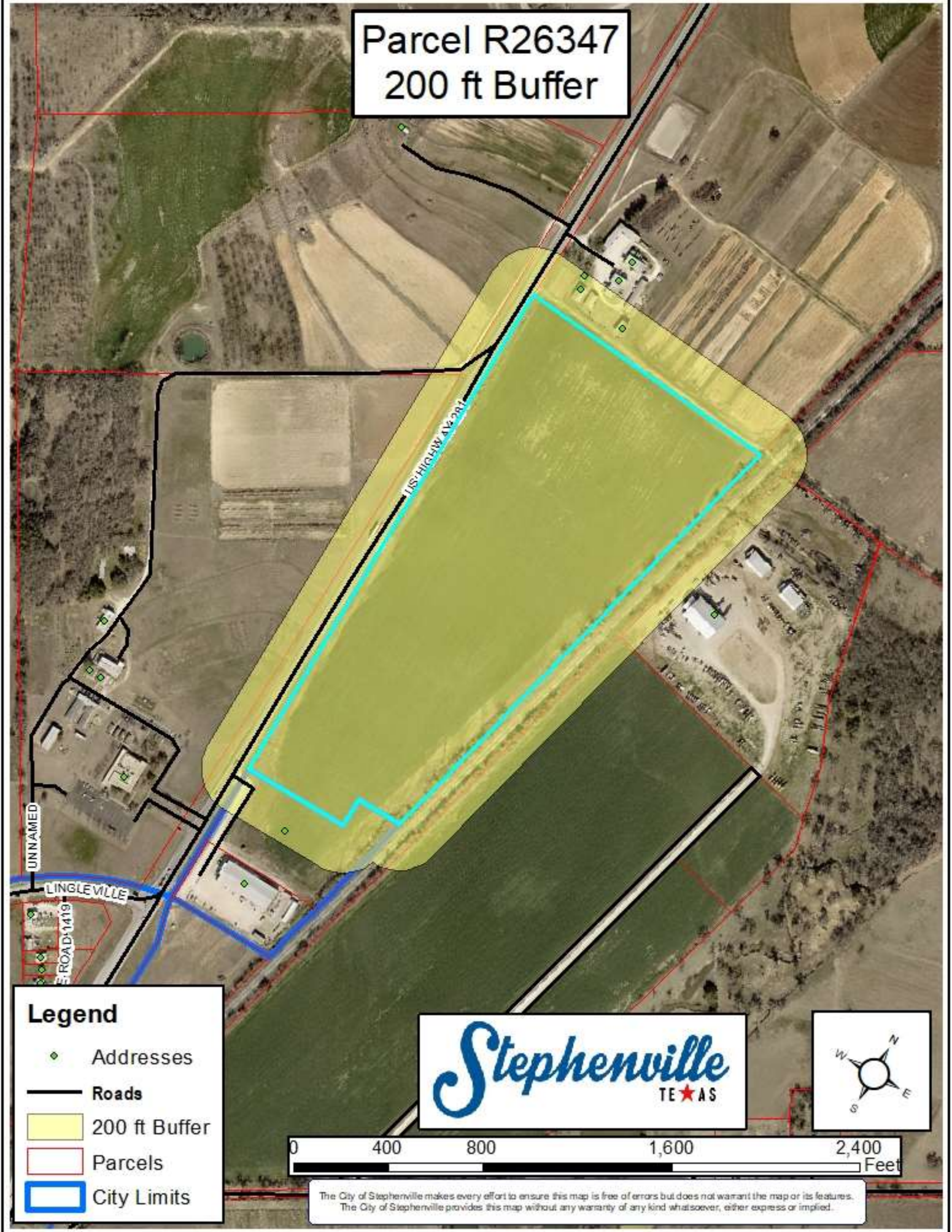


Parcel R26347 200 ft Buffer



Legend

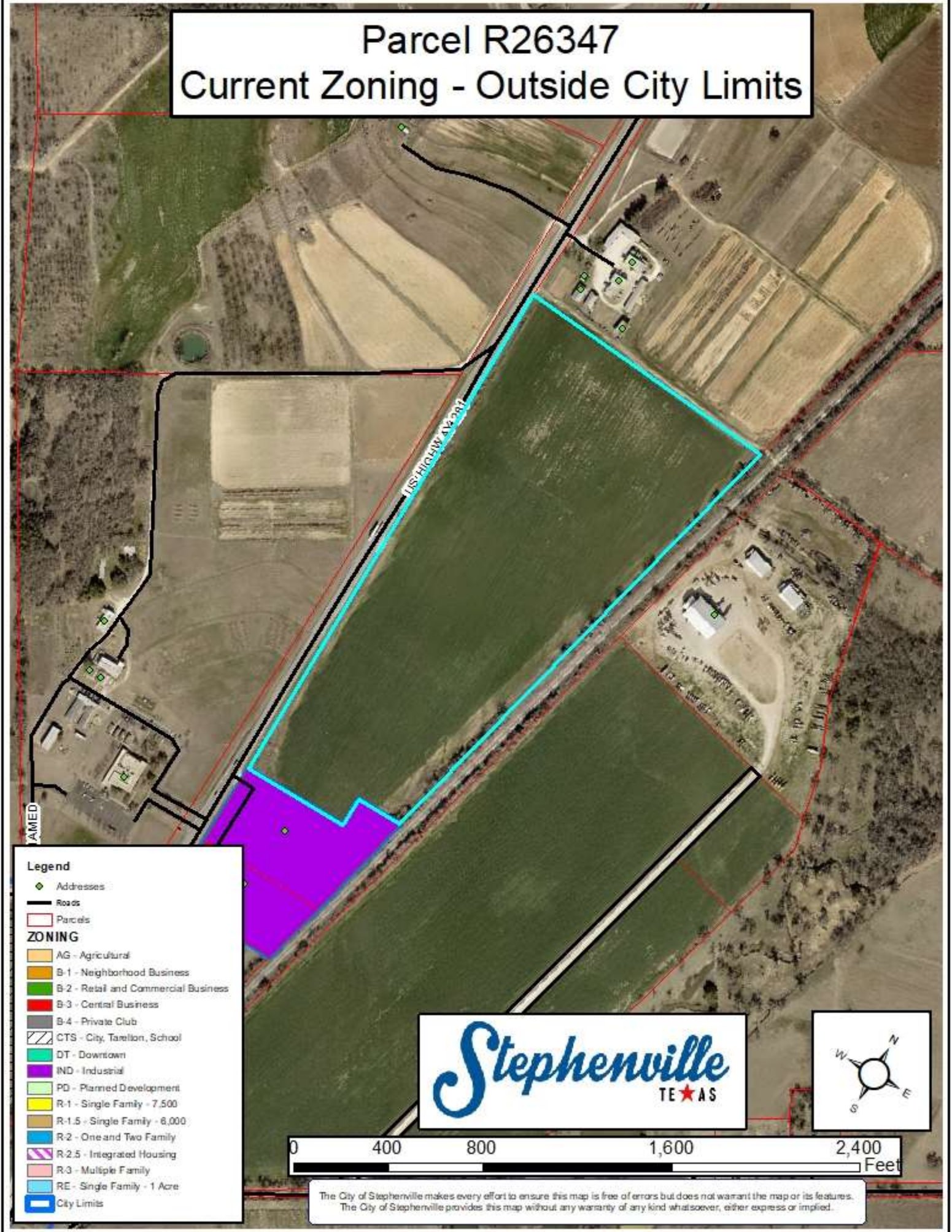
- ◆ Addresses
- Roads
- 200 ft Buffer
- ▭ Parcels
- ▭ City Limits



The City of Stephenville makes every effort to ensure this map is free of errors but does not warrant the map or its features. The City of Stephenville provides this map without any warranty of any kind whatsoever, either express or implied.

Parcel R26347

Current Zoning - Outside City Limits



Legend

- ◆ Addresses
- Roads
- Parcels

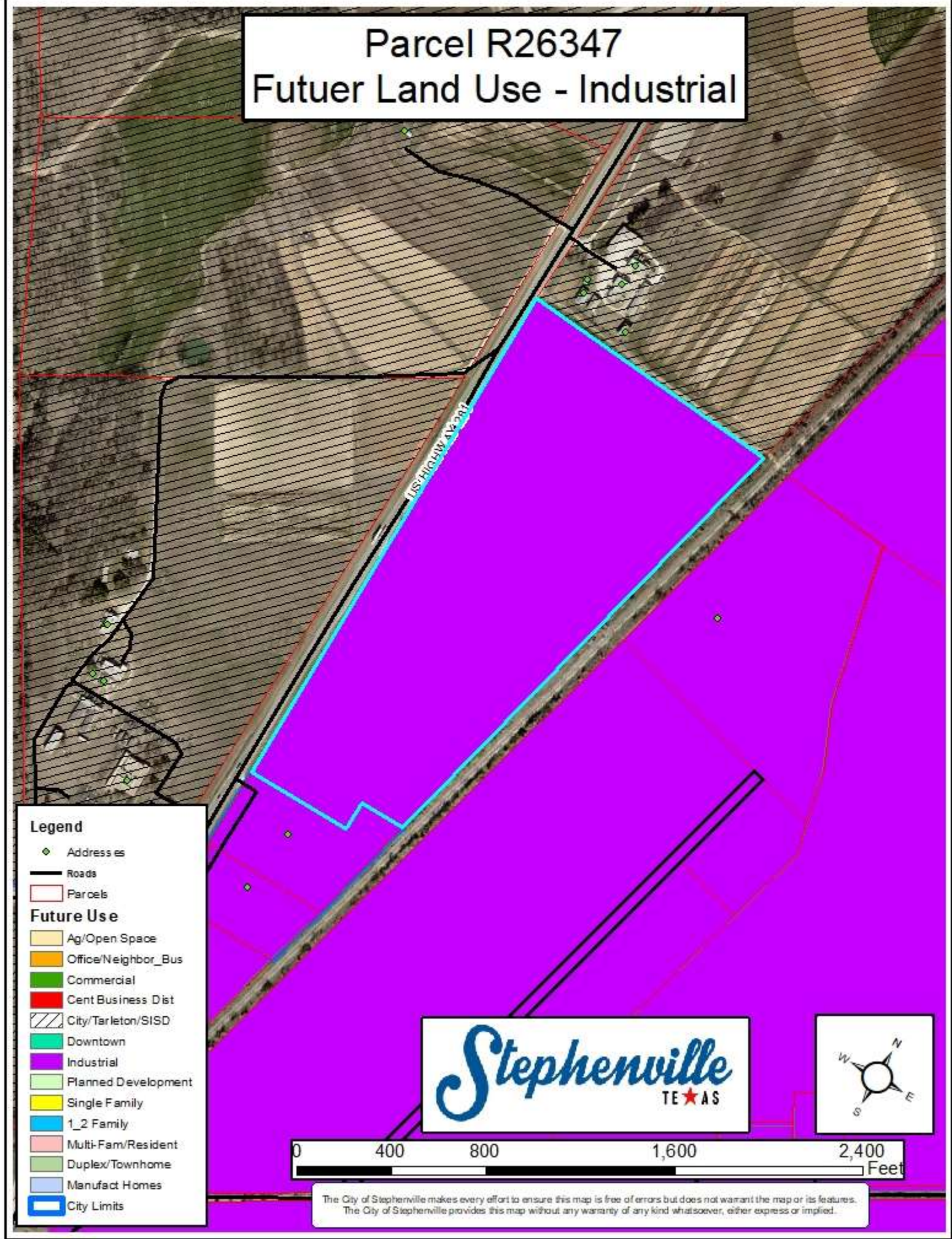
ZONING

- AG - Agricultural
- B-1 - Neighborhood Business
- B-2 - Retail and Commercial Business
- B-3 - Central Business
- B-4 - Private Club
- CTS - City, Tarellon, School
- DT - Downtown
- IND - Industrial
- PD - Planned Development
- R-1 - Single Family - 7,500
- R-1.5 - Single Family - 6,000
- R-2 - One and Two Family
- R-2.5 - Integrated Housing
- R-3 - Multiple Family
- RE - Single Family - 1 Acre
- City Limits

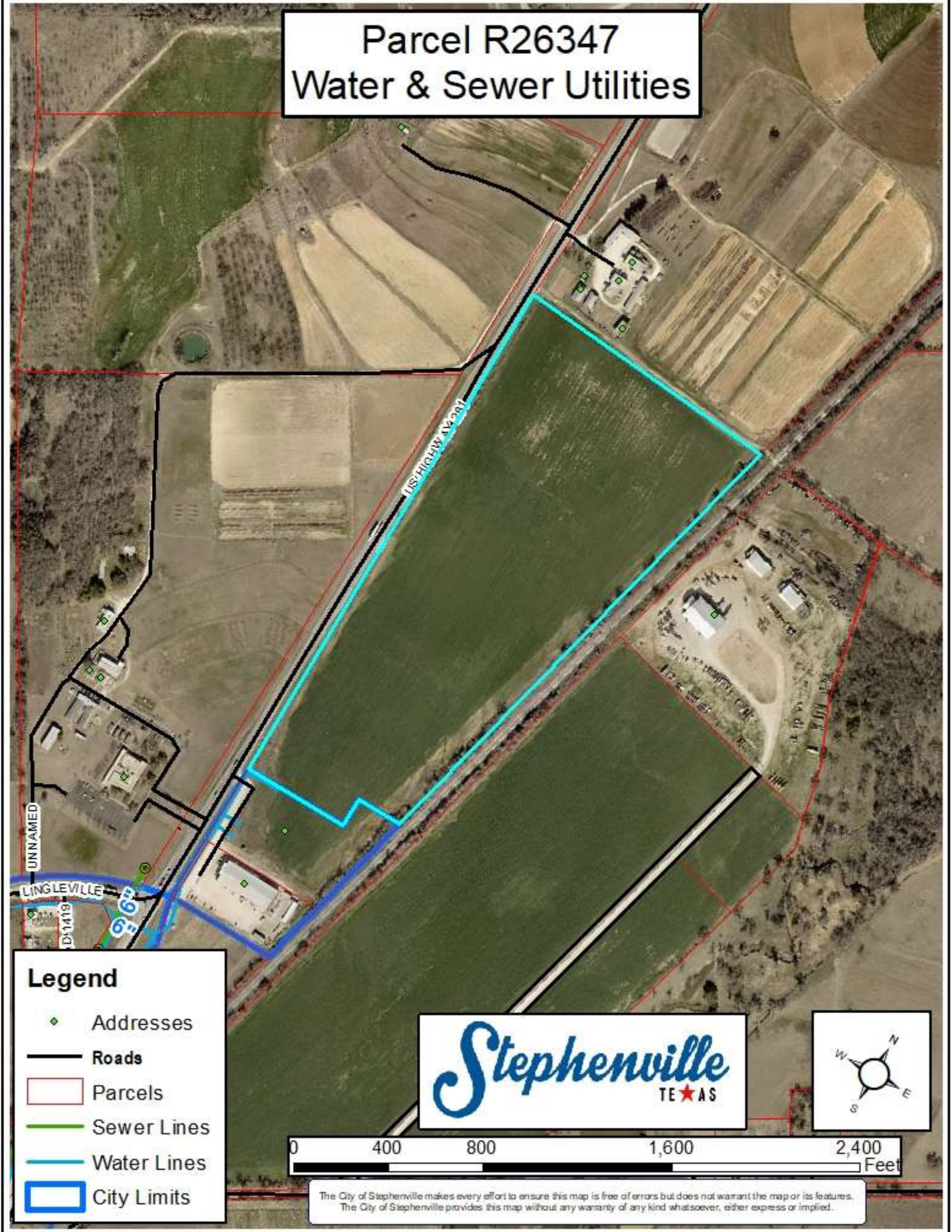


The City of Stephenville makes every effort to ensure this map is free of errors but does not warrant the map or its features. The City of Stephenville provides this map without any warranty of any kind whatsoever, either express or implied.

Parcel R26347 Futuer Land Use - Industrial

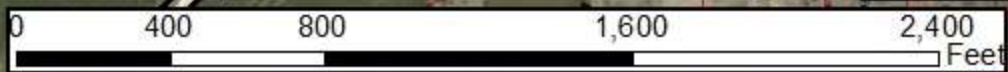


Parcel R26347 Water & Sewer Utilities



Legend

- ◆ Addresses
- Roads
- ▭ Parcels
- Sewer Lines
- Water Lines
- ▭ City Limits



The City of Stephenville makes every effort to ensure this map is free of errors but does not warrant the map or its features. The City of Stephenville provides this map without any warranty of any kind whatsoever, either express or implied.

Parcel R26347 Address List

Parcel ID	Parcel Address	Parcel Owner	Owner Address	City	State	Zip Code
R000026380	1229 N US281	BOARD OF REGENTS OF THE TX A&M UNIVERSITY SYSTEM	301 TARROW STREET 6TH FLOOR	COLLEGE STATION	TX	77840-7896
R000026399	2274 N US281	BOARD OF REGENTS OF THE TX A&M UNIVERSITY SYSTEM	301 TARROW STREET 6TH FLOOR	COLLEGE STATION	TX	77840-7896
R000026365	0 N US281 (OFF)	BOLLING CURTIS ALLEN TRUST & RICHARD BOLLING EST	1530 BATES	STEPHENVILLE	TX	76401
R000076784	545 CR177	DUCATO INVESTMENTS LLC	PO BOX 214	CUSICK	WA	99119
R000075735	0 N US377 (OFF)	FORT WORTH & WESTERN RAILROAD	6300 RIDGLEA PLACE STE 1200	FORT WORTH	TX	76116-5738
R000026346	0 CR177	SID PARTNERS LLC	PO BOX 908	STEPHENVILLE	TX	76401
R000026347	0 N US281	SID PARTNERS LLC	PO BOX 908	STEPHENVILLE	TX	76401
R000077375	1350 N US281	STEPHENVILLE WF LLC	2611 HARRISON SUITE 900	WICHITA FALLS	TX	76308