

ARCHITECTURAL SYMBOLS

| | |
|--|--------------------------|
| | CENTERLINE OF COLUMN |
| | CENTERLINE OF STUD |
| | FACE OF STUD OR CMU WALL |

NOTES:

EXTERIOR WINDOWS: KAWNEER ENCORE 4 1/2" X 1 3/4" FRAMING SYSTEM. ALTERNATE GUESTROOM WINDOWS QUAKER E300 SERIES FW WINDOWS. COLOR: CLEAR ANODIZED ALUMINIUM EXTERIOR, INTERIOR AND SILL FLASHING.

EXTERIOR/INTERIOR STOREFRONT FRAMING AND ENTRANCE SWING DOORS: KAWNEER ENCORE 6" X 1 3/4" FRAMING SYSTEM, INCLUDING 1" THICK INSULATED ALUMINIUM METAL PANEL. SET INTO GLAZING POCKET AND SPANDRAL INSULATION. COLOR: CLEAR ANODIZED ALUMINIUM EXTERIOR AND INTERIOR.

EPDM ROOF SYSTEM, CARLISLE'S BLACK EPDM 90 mil SURE SEAL, COMPLETE WITH TREATED WD BLKG, VAPOR BARRIER, ROOF INSULATION, WALKWAY PADS AND ROOF BOARDS.

AUTOMATIC SLIDING ENTRANCE DOORS. EXTERIOR: BESAM OVERHEAD CONCEALED SL500 WITH ECODOOR SEALS, MAGNETIC CATCHES AND EXTERIOR INSULATED CLEAR GLASS. INTERIOR: BESAM OVERHEAD CONCEALED SL500 WITH INTERIOR CLEAR GLASS. COLOR: CLEAR ANODIZED ALUMINIUM EXTERIOR AND INTERIOR.

GLAZING COMPONENTS. EXTERIOR INSULATED CLEAR GLASS: GL-10 VIRACON VUE1-50. EXTERIOR INSULATED SPANDRAL GLASS: GL-10S VIRACON VUE1-50 WITH HIGH-CAPACITY WHITE V175 CERAMIC FRIT.

INSULATED GLASS SPACERS: CLEAR ANODIZED ALUMINIUM. INTERIOR CLEAR GLASS: GL-1 VIRACON CLEAR FLOAT GLASS. (T) DENOTES TEMPERED SAFETY GLASS IS REQUIRED.

EXTERIOR INSULATED HOLLOW METAL DOORS AND FRAMES. EXTERIOR GRADE PAINT, CUSTOM COLOR TO MATCH PLAIN ALUMINIUM.

APC WALL BASE. CUSTOM FABRICATED WALL BASE, NATURAL APC SMOOTH PITLESS SURFACE WITH CLEAR SEALER FINISH. PROVIDE MITERED CORNERS AND ALIGN JOINTS WITH EIFS JOINTS.

GUESTROOM EXTERIOR GRILLS. RUSKIN ELF150 THIN LINE STATIONARY LOUVER AND BLANK OFF BACKING PANELS. COLOR: CLEAR ANODIZED ALUMINIUM, COLOR TO MATCH ADJACENT WALL.

STONE. BORAL STONE PRODUCTS CULTURED STONE, PRO-FIT LEDGESTONE SOUTHWEST BLEND.

SIT MTL-WH, SHEET METAL GRAVEL STOP TYPE COPPING. PAC-CLAD CUSTOM FABRICATED ROOF EDGE FLASHING AND FASCIA. COLOR: BONE WHITE.

SIT MTL-GR, ELEVATOR OVERRUN GRAVEL STOP TYPE COPPING, SCUPPER AND DOWNSPOUT. PAC-CLAD CUSTOM FABRICATED ROOF EDGE FLASHING AND FASCIA. COLOR: SLATE GRAY.

EIFS NOTE: PROVIDE HIGH IMPACT SYSTEM WITHIN 6'-0" ABOVE GRADE.

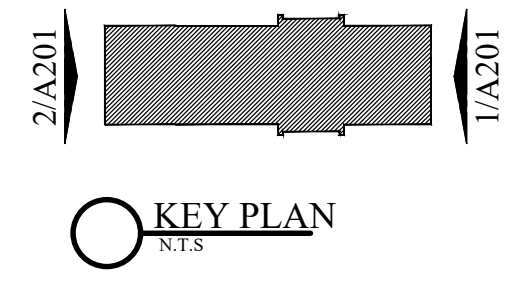
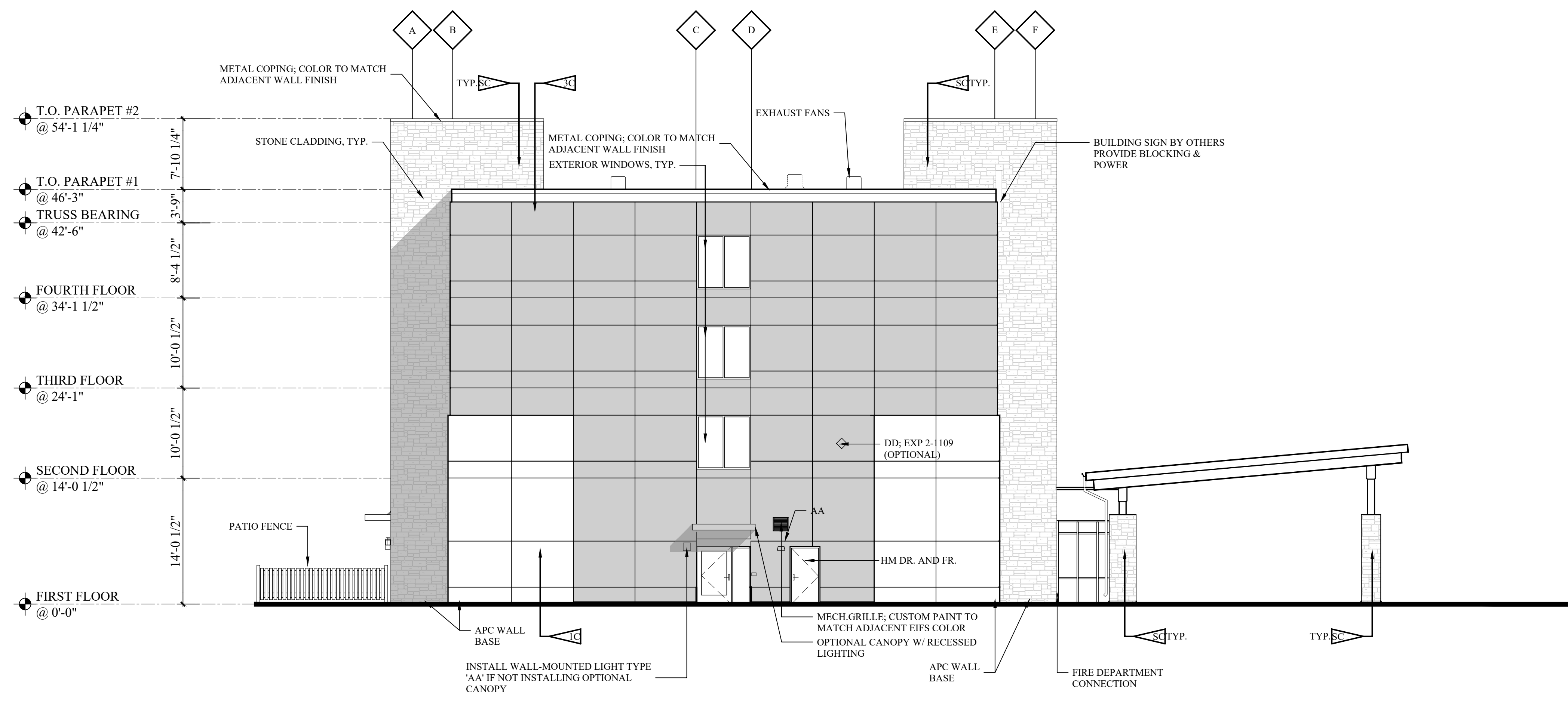
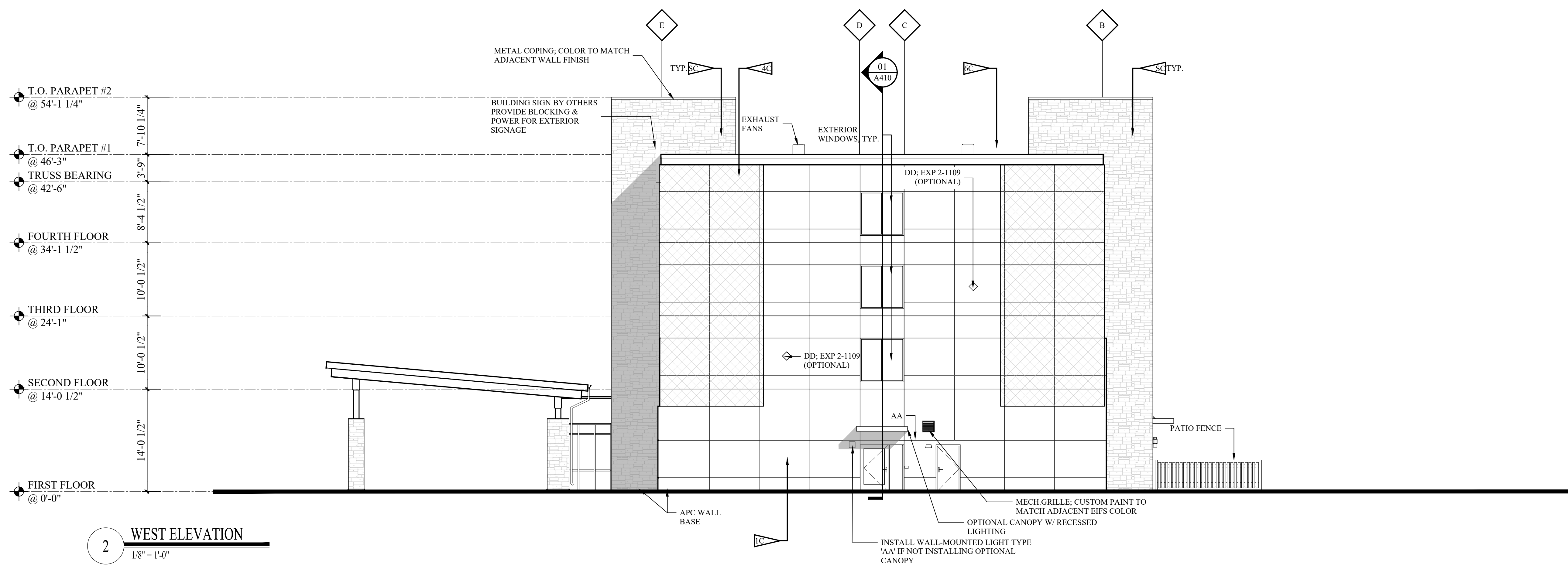
EXTERIOR PATIO FENCE: 4'-0" HIGH FENCE AND 3'-0" GATE. NATURES COMPOSITES TERRAFENCE WITH POSTS AT CORNERS, END AND EVENLY SPACED AT 3'-0" O.C.

VERTICAL PICKETS SPACED 1" APART ON 3 HORIZONTAL RAILS. CONTEMPORARY SCHEME COLOR RAVENWOOD OR NATURAL SCHEME COLOR ASPEN GREY.

MATERIAL LEGEND

| | | | |
|--|---|--|---|
| | EXTERIOR CLADDING SYSTEM - EIFS 1C / EIFS 1N COLOR: SHERWIN WILLIAMS 'ACCESSIBLE BEIGE' (SW7036); COATING EXTRA COURSE; ULTRACRETE TEXTURE | | EXTERIOR CLADDING SYSTEM - EIFS 4C / EIFS 4N COLOR: SHERWIN WILLIAMS ROOKWOOD TERRA COTTA (SW2803); COATING FINE; ULTRACRETE TEXTURE |
| | EXTERIOR CLADDING SYSTEM - EIFS 2C / EIFS 2N COLOR: SHERWIN WILLIAMS 'ACCESSIBLE BEIGE' (SW7036); COATING FINE; ULTRACRETE TEXTURE | | STONE CLADDING SC |
| | EXTERIOR CLADDING SYSTEM - EIFS 3C / EIFS 3N COLOR: SHERWIN WILLIAMS 'VIRTUAL TAUPE' (SW7039); COATING; ULTRACRETE TEXTURE | | EXTERIOR CLADDING SYSTEM - EIFS 6C / EIFS 6N COLOR: SHERWIN WILLIAMS 'GRAY SHINGLE' (SW7670); COATING FINE; ULTRACRETE TEXTURE |

NOTE: 'C' DENOTES CONTEMPORARY COLOR SCHEME; 'N' DENOTES NATURAL COLOR SCHEME



IMPORTANT NOTICE TO ALL CONTRACTORS AND OR SUBCONTRACTORS: (COMPLETE BUILDING SYSTEMS AND OR INSTALLATIONS)

IF AWARDED A CONTRACT FOR ANY PORTION OF WORK NEEDED TO COMPLETE THIS PROJECT YOU ARE AGREEING TO THE FOLLOWING TERMS:

- YOU ARE A QUALIFIED CONTRACTOR AND/OR SUBCONTRACTOR SPECIFICALLY TO PROVIDING A COMPLETE TURNKEY SERVICE IN YOUR TRADE OR PROFESSION FOR THE TYPE OF WORK AND SCOPE FOR THIS PROJECT.
- YOU AGREE TO PROVIDE A COMPLETE DESIGN BUILD SOLUTION BASED ON THE DESIGN PROFESSIONAL'S EXTENDED DESIGN FOR THIS PROJECT.
- YOUR BID INCLUDES ALL THE STEPS, PROCESS, MATERIALS, PRODUCTS, GOVERNING PERMITS AND APPROVALS NECESSARY TO PROVIDE A COMPLETED AND WARRANTED SYSTEM OF INSTALLATION THAT DOES NOT REQUIRE ANOTHER CONTRACTOR OR PRODUCT TO COMPLETE YOUR SCOPE OF WORK.
- YOUR BID MUST HAVE INCLUDED ANY DESIGN INFORMATION REFERENCE WITHIN ANY CIVIL, ARCHITECTURAL, STRUCTURAL, MECHANICAL, ELECTRICAL, AND/OR PLUMBING DRAWINGS. ALSO NOTE THESE DRAWINGS ARE SCHEMATIC AND ARE INTENDED TO SHOW ONLY BASIC CONCEPTS AND GENERAL INFORMATION. THE COMPLETE OF YOUR WORK MAY INCLUDE OTHER STEPS, PROCESS, MATERIALS, PRODUCTS, LABEL, GOVERNING PERMITS AND/OR APPROVALS NECESSARY TO PROVIDE A COMPLETE SYSTEM INSTALLATION WHETHER SUGGESTED BY THE DRAWING OR NOT.
- AS AN EXAMPLE ITEMS AND/OR TASKS LIKE: FIRE CAULK, DRAFT STOP, FASTENERS, ANCHORS, EMBLEMENTS, DUMPSTERS, DEBRIS CLEAN UP, ETC ARE YOUR RESPONSIBILITY. ANY WORK NOT COMPLETED IN A TIMELY MANNER OR INCOMPLETE WORK WILL BE BILLED BACK TO THE CONTRACTOR AND/OR SUBCONTRACTOR, AT THE OWNER'S DISCRETION.



3827 BILLO ROAD
ALDEN, NY, 14004
716-631-0600

DESIGN PROFESSIONAL

LICENSE #:

WARNING:
IT IS A VIOLATION OF THE LAW FOR ANY PERSON, UNLESS ACTING UNDER THE DIRECTION OF THE ARCHITECT OR ENGINEER, TO ALTER OR REPRODUCE THESE DRAWINGS IN ANY WAY.

DRAWING QUESTIONS
CA@MWTUSA.COM
1-800-717-5816

PROJECT OWNER
DNJ'S Investments, LCC
1720 10th Street, Floresville
TX 78114

STEPHENVILLE, TX



REVISIONS

| NO. | DESCRIPTION | DATE | BY |
|-----|-------------|------|----|
| | | | |
| | | | |
| | | | |
| | | | |
| | | | |
| | | | |
| | | | |
| | | | |
| | | | |
| | | | |

ISSUED FOR:
60% SET
NOT FOR CONSTRUCTION

PROJECT NO.: 21-060
DATE: 6/14/23
DRAWN BY: RH/MA/EY
CHKD. BY: AS/DE

EXTERIOR ELEVATION

SHEET
A201