



**City of Stone
Mountain LCI**

CONNECTING PARKS, PATHS
AND PUBLIC SPACES



**The Baptist
Lawn**

A PLACE TO MEET, MAKE MEMORIES,
AND MOVE FORWARD TOGETHER



City Council Update
April 15th 2025

POND



City of Stone Mountain **LCI**

CONNECTING PARKS, PATHS
AND PUBLIC SPACES



POND

PROJECT SCHEDULE



AUG - SEP

Existing Conditions & Technical Analysis

Physical Conditions & Analysis
Past Plan Review
Public Art and Artist Involvement
Needs and Opportunities



OCT - MARCH

Plan Development

Vision Casting
PATH Connectivity
Green Network
Identify Catalytic Nodes
Masterplan Development
Design Guidelines



APR - MAY

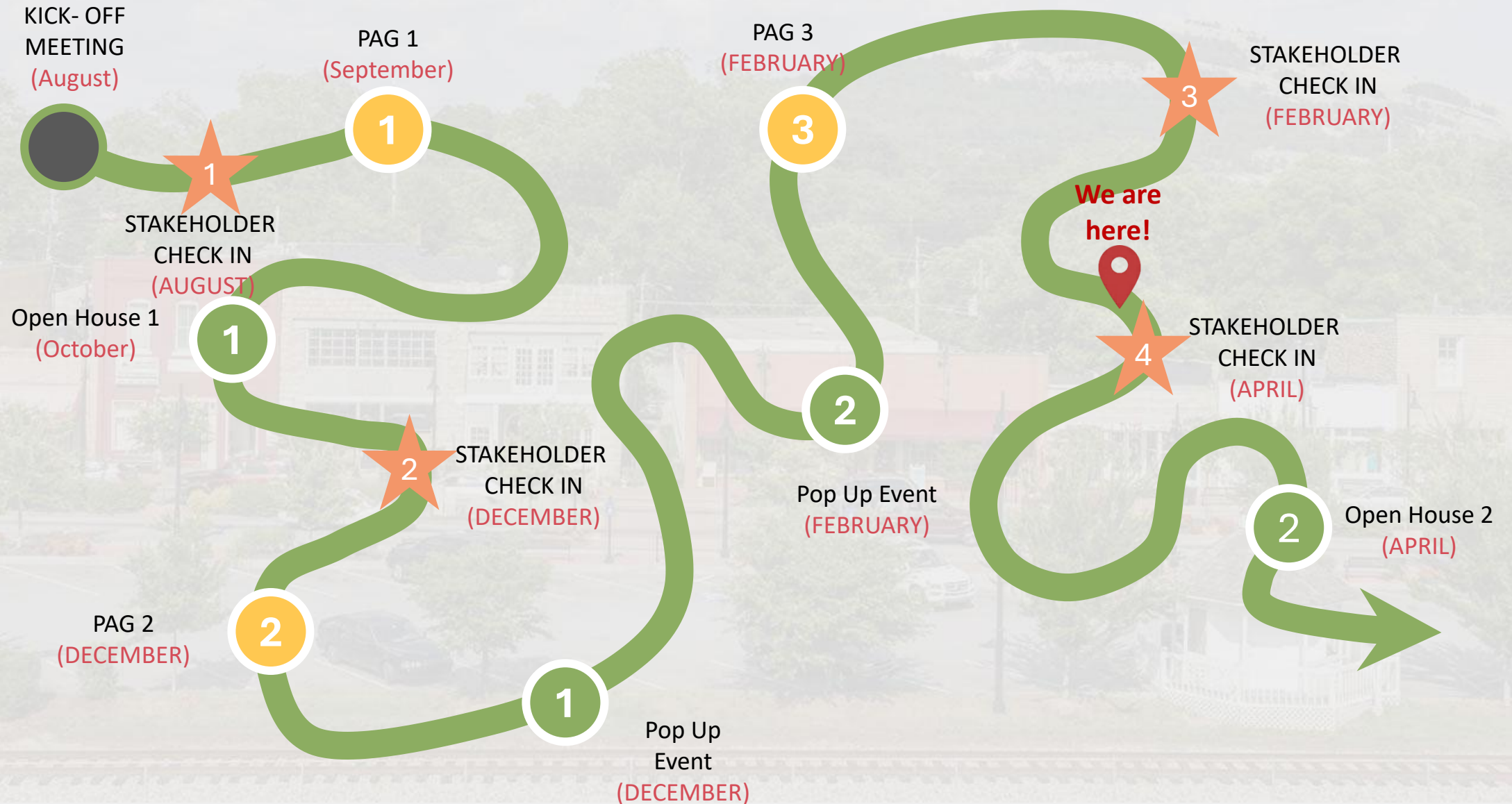
Project Deliverables

Implementation Plan
Draft Report
Final Report

**We are
here!**

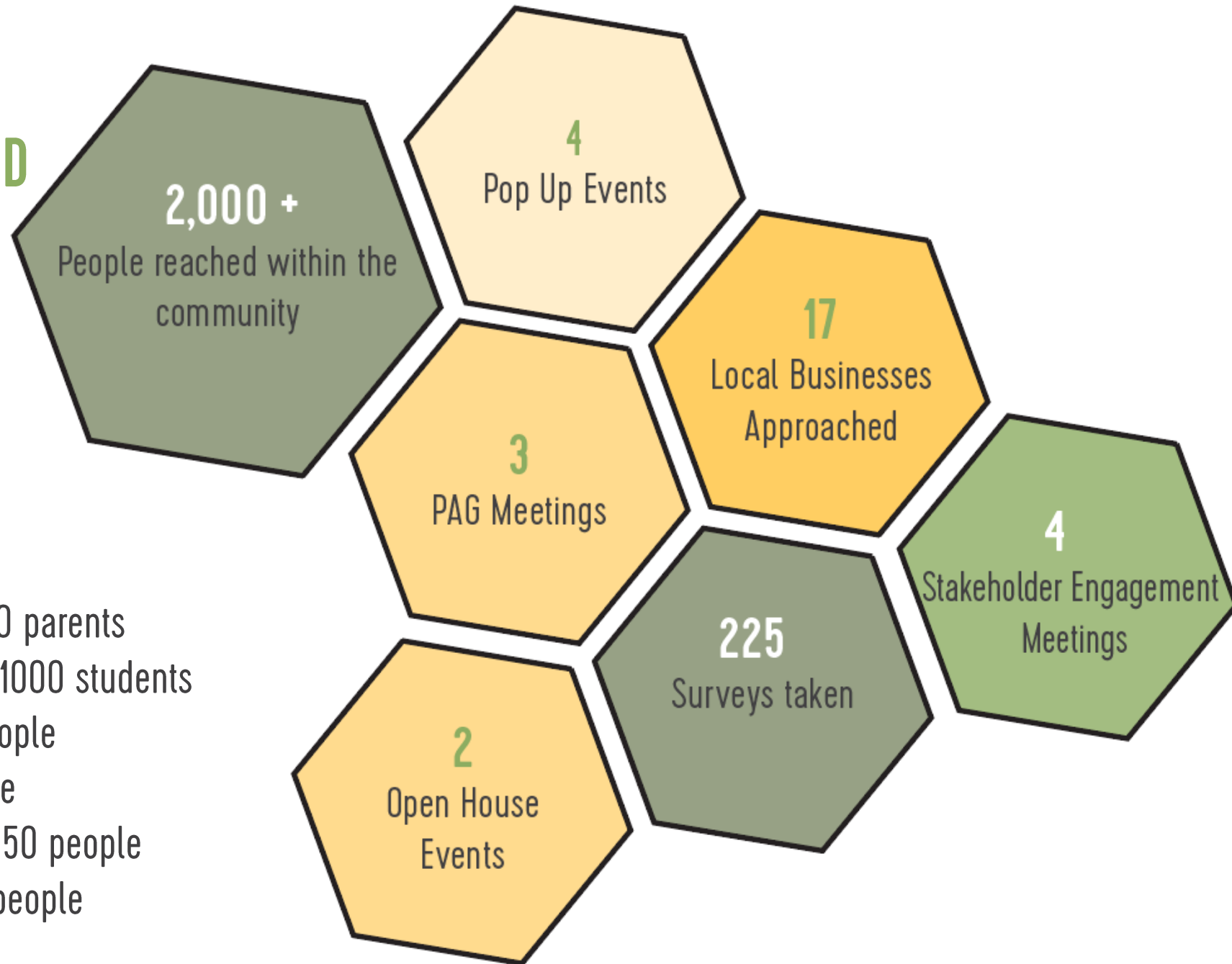


ENGAGEMENT MILESTONES



COMMUNITY VOICES

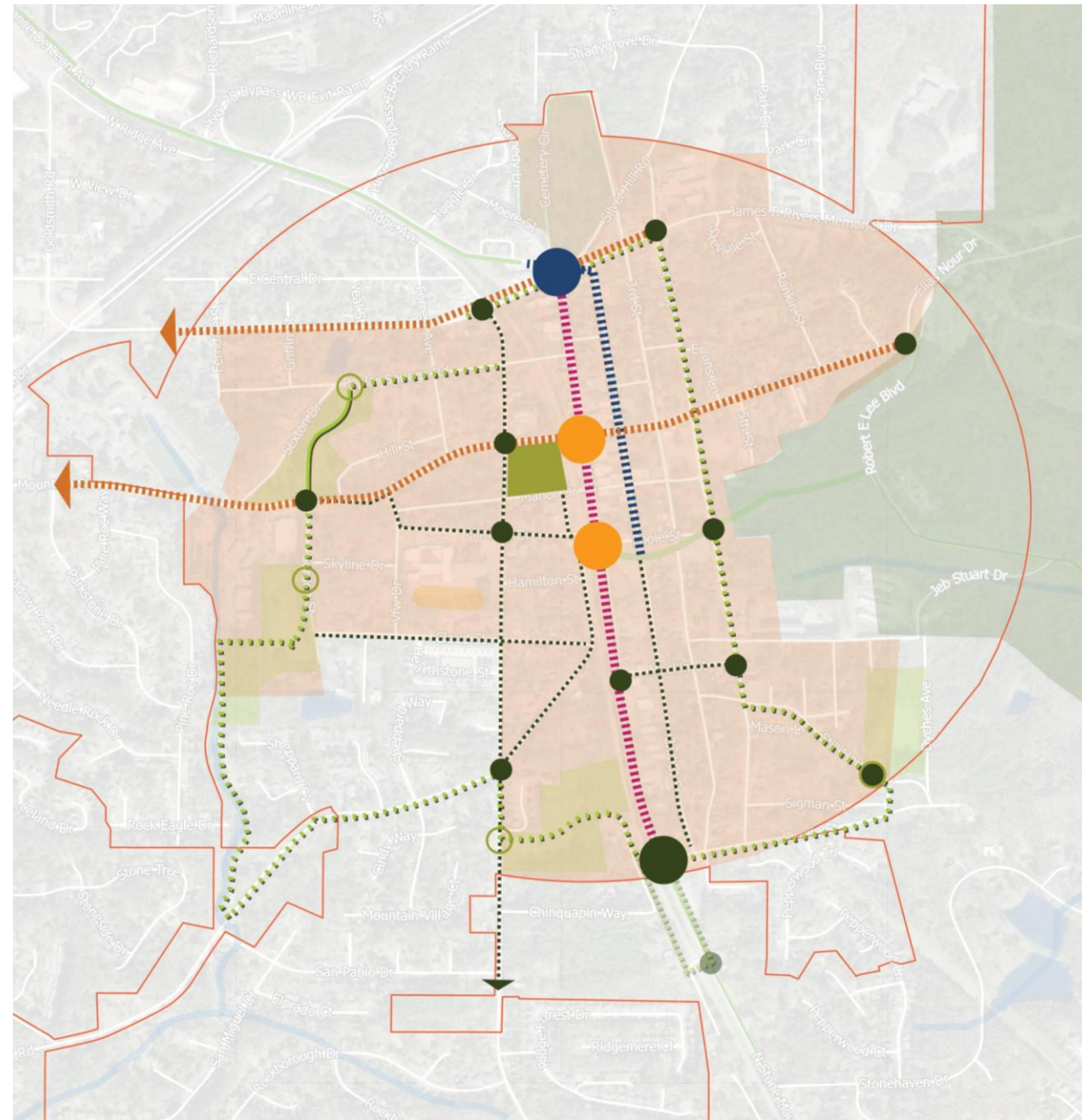
HOW HAVE WE CONNECTED SO FAR?



- Open House # 1 – 100 people
- Stone Mountain Elementary – 400 parents
- Stone Mountain Middle School – 1000 students
- Brookstone Senior Home – 50 people
- 17 businesses on Main - 50 people
- Targeted Stakeholder Outreach – 50 people
- Christmas Parade Pop Up – 400 people

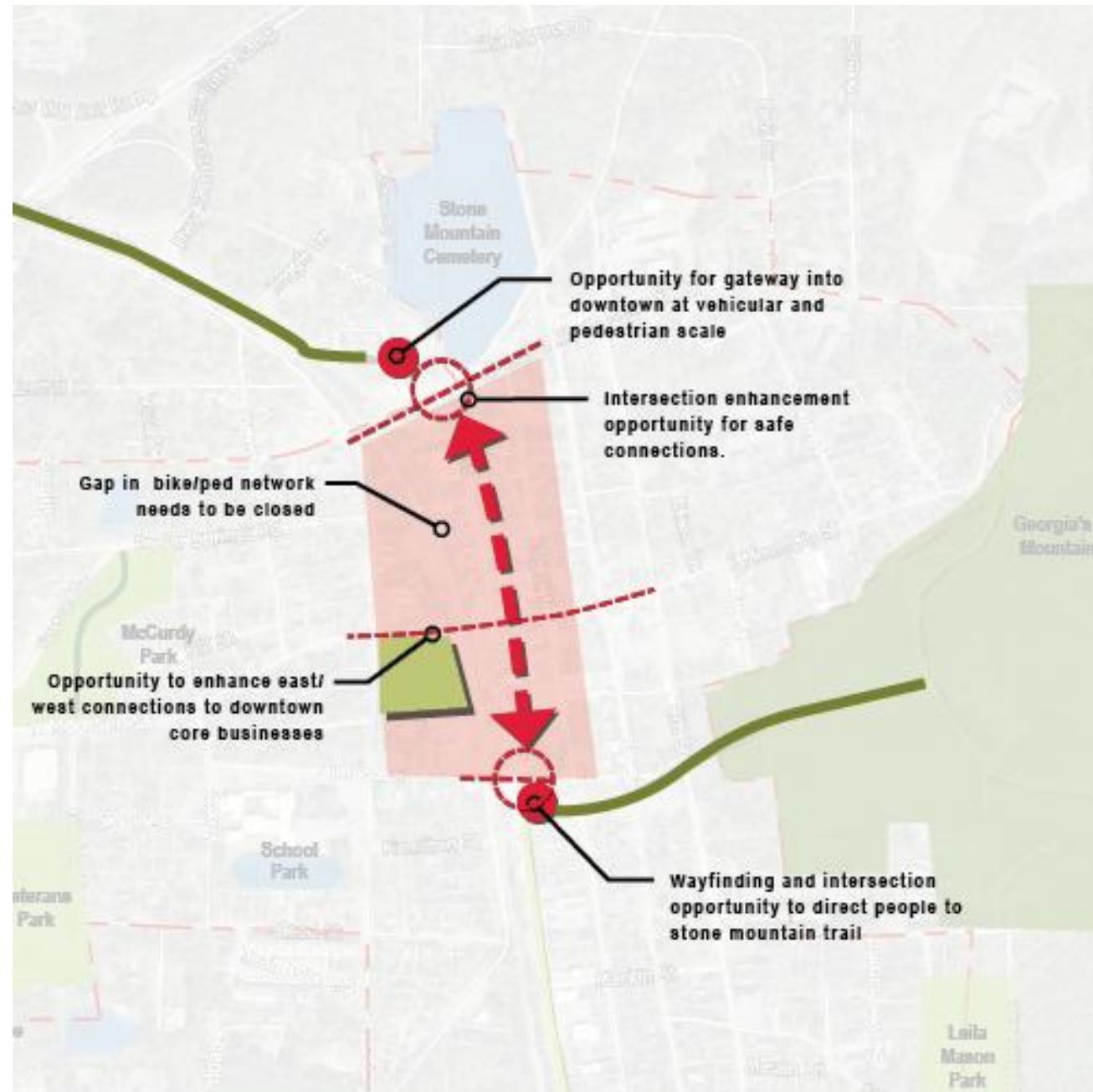
PLAN OVERALL RECOMMENDATIONS

-  1. PATH
-  2. Local Street Connections
-  3. Gateways / Icons
-  4. Activity Street
-  5. Southern Connection
-  6. Regional Connections
-  7. Parks

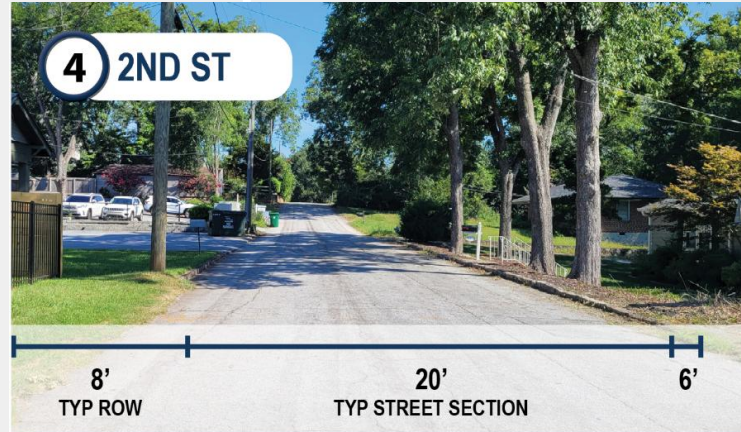


PATH CONNECTIVITY

- Close Regional Trail Gap
- Gateway and Wayfinding
- Bring visitors into community
- Prioritize Bike Ped Network

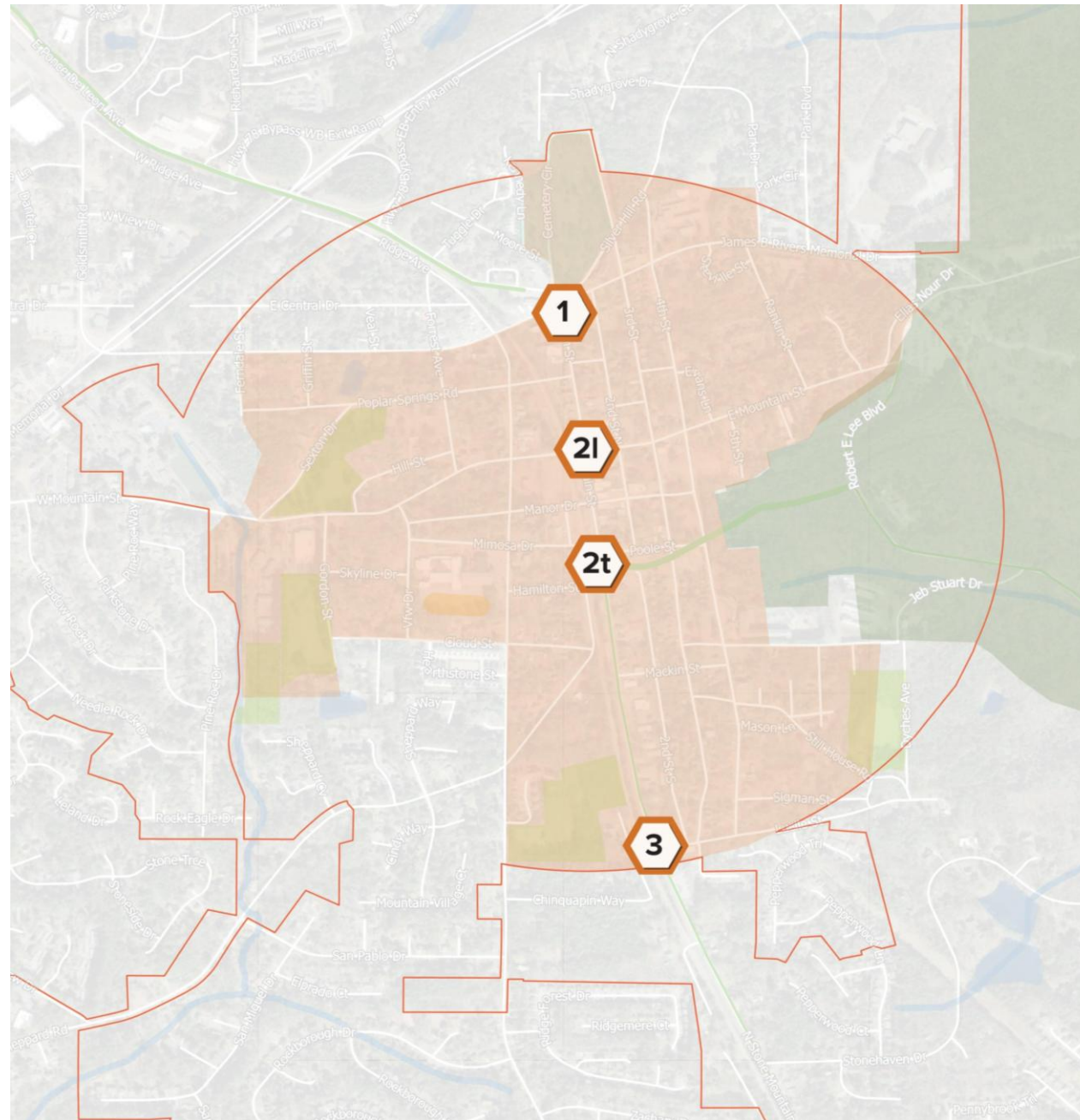


2nd street PATH connectivity



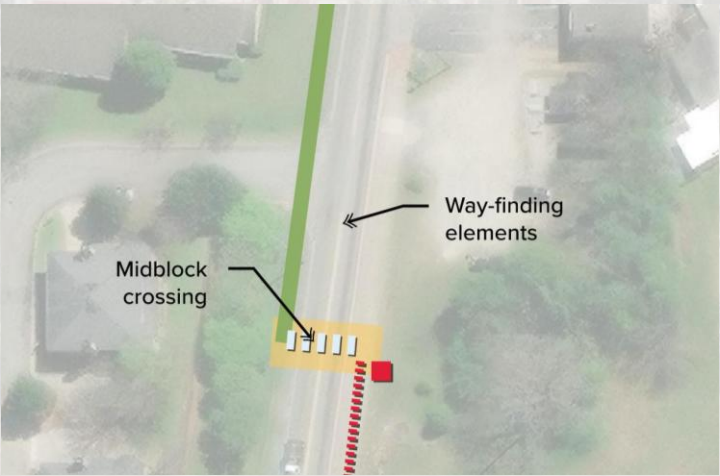
Catalyst Sites

1. Gateway Entry
- 2L. Main Street Lawn
- 2T. Main Street Trail
3. Southern Connection



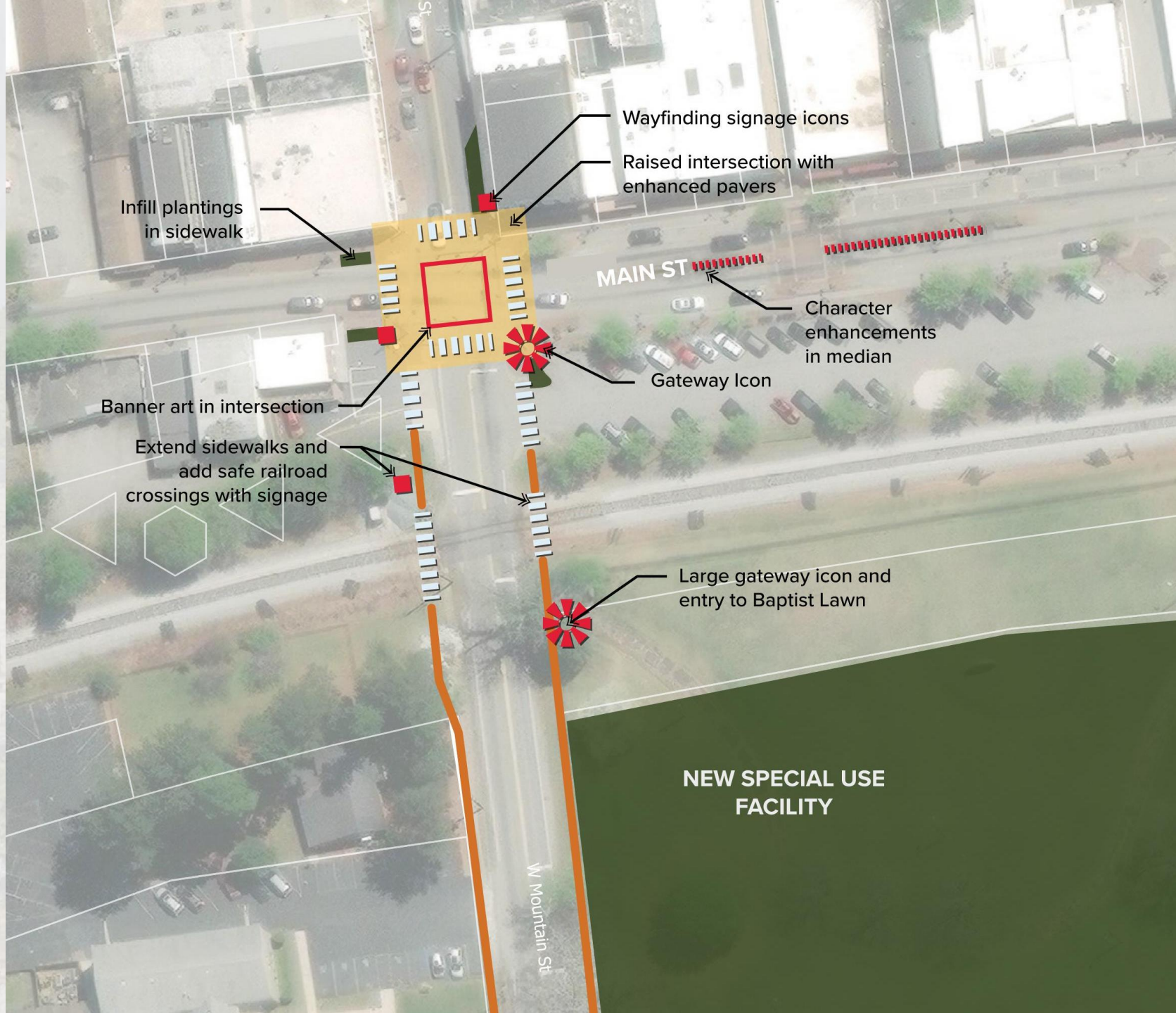
1

Gateway Entry



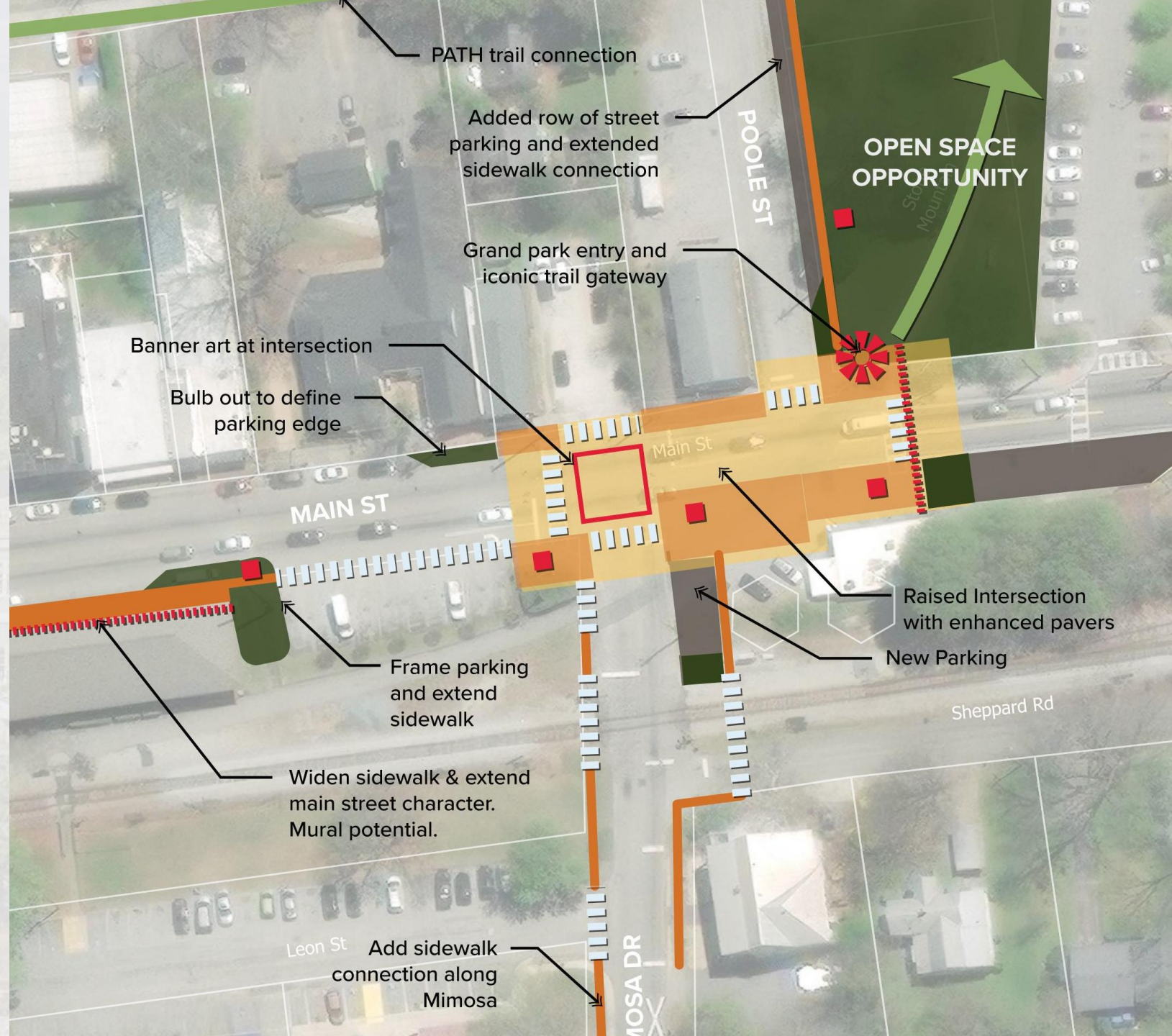


Main Street Lawn



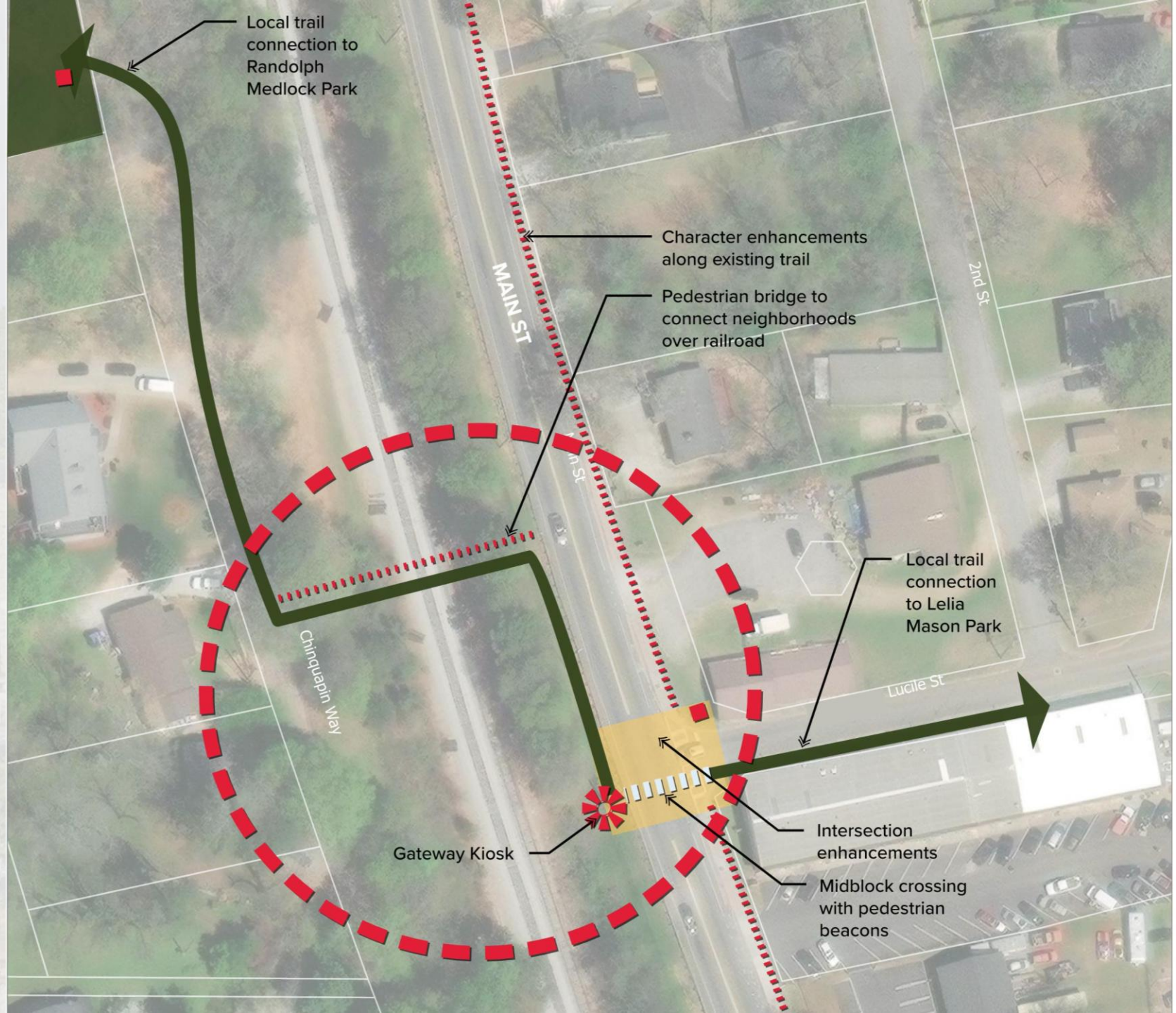
2L

Main Street Trail



3

Southern Connection





The Baptist Lawn

A PLACE TO MEET, MAKE MEMORIES,
AND MOVE FORWARD TOGETHER



POND

PROJECT TIMELINE

We are
here!



MARCH - APR

Existing Conditions & Technical Analysis

Land Survey
Kick Off Meeting
Site Walk
Physical Conditions & Analysis
Opportunities and Constraints

MAY - JULY

Concept Design

Vision Casting
2 Concept Plans
PMT Design Workshop
Preferred Concept Option
Perspective Rendering and Imagery Board

AUG - SEP

Project Deliverables

Next Steps
Draft Technical Memo
Final Technical Memo

SIMILAR PROJECT EXAMPLES

SMYRNA PUBLIC PARK

Following the adoption of the Smyrna BOLD Downtown Master Plan Update (which Pond completed in 2020), Pond was hired to complete a conceptual design phase for the first of two new downtown public greenspaces in Smyrna.



DULUTH JEWEL BOX

Duluth's Jewel Box Park is a small but impactful urban pocket park designed to activate downtown with green space, seating, and public art. Tucked in the heart of the city- it is a vibrant community connector and a model for high-quality placemaking on a compact site.



WHAT THIS PLAN WILL INCLUDE

Land Survey	2x Concept Site Design Alternatives	Preferred Concept Site Plan Rendering	Technical Memo
Existing Conditions Memo	PMT Design Workshop	Precedent Imagery	Renderings

WHAT COMES NEXT?

1- Schematic Design (SD)

- Preliminary layout and form.
- Develop initial site elements (grading, utilities, circulation, landscape, etc.).
- Coordinate with engineers and key stakeholders.
- Produce initial visualizations and design narratives.

2- Design Development (DD)

- Detailed site plans
- Integrate building systems and landscape features
- Detailed cost estimates and constructability reviews.

3- Construction Documents (CD)

- Detailed drawings and specifications
- Coordinate all disciplines (civil, MEP, structural, landscape, architecture)
- Ensure code compliance and regulatory requirements
- Finalize bid-ready documents

4- Permitting

Submit documents for approval.
Coordinate with relevant agencies (zoning, stormwater, DOT, fire, etc.)
Revise plans as needed based on agency comments.

5- Bidding / Procurement

- Send Construction Documents to pre-qualified contractors.
- Respond to RFIs and clarify scope
- Review bids, interview contractors, and select builder
- Negotiate contract terms and finalize construction contract

6- Construction Administration

- Send Construction Documents to pre-qualified contractors.
- Respond to RFIs and clarify scope
- Review bids, interview contractors, and select builder
- Negotiate contract terms and finalize construction contract

Thank you!



**City of Stone
Mountain LCI**
CONNECTING PARKS, PATHS
AND PUBLIC SPACES

POND