



FREIGHT CLUSTER PLAN

IN COOPERATION WITH **ARC**

CITY BRIEFING

MAY 13, 2024

PRESENTED BY



METRO ANALYTICS

IN ASSOCIATION WITH



FREIGHT CLUSTER PLAN

IN COOPERATION WITH **ARC**

Agenda

Agenda:

- Introduction and Purpose of Study
- Project Schedule
- Highlights of Outreach Activities
- Draft Recommendations
- Questions and Next Steps

CITY BRIEFING
MAY 13, 2024



METRO ANALYTICS





FREIGHT CLUSTER PLAN

IN COOPERATION WITH

Introduction and Purpose of Study

Purpose:

- Understand existing freight assets and surrounding issues
- Guide future development of freight assets to create sustainable industrial development
- Coordination of ongoing and future projects
- Provide a cost-effective opportunistic work program

Key focus areas:



Promote a safe, balanced transportation environment for freight and multimodal travel



Promote economic development



Identify appropriate industrial land uses



Promote efficient transportation solutions



Protect nearby communities



Engaging the private sector and community stakeholders

CITY BRIEFING
MAY 13, 2024

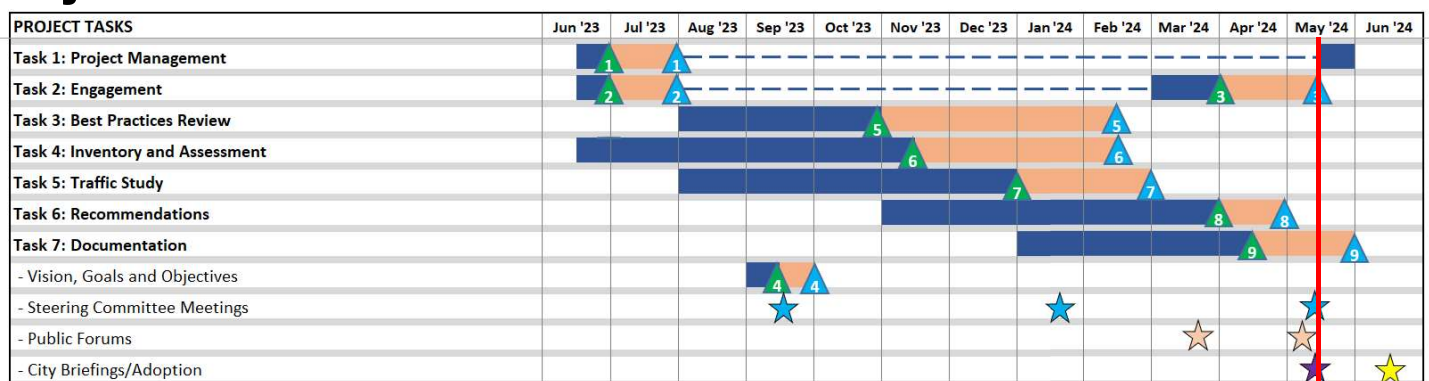


FREIGHT CLUSTER PLAN

IN COOPERATION WITH

Introduction and Purpose of Study

Project Schedule:



Steering Committee Meetings



Optional Steering Committee Meeting (If Needed)



Public Forums



City Briefings



Adoption by City



Project Management Plan



Stakeholder Engagement and Outreach Plan



Summary of Public Involvement Activities



Vision, Goals and Objectives



Best Practices Report



Inventory and Assessment Report



Traffic Study Report



Recommended Work Program/Policy Recommendations



Recommendations Final Report and Executive Summary



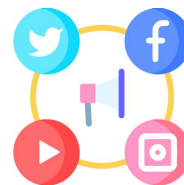
Denotes Internal Review Period

CITY BRIEFING
MAY 13, 2024



Outreach Activities:

- **Steering Committee (3-4 Meetings, In Progress)**
- **Stakeholder Interviews (Identify freight related challenges, facility operations, trends, potential projects)**
- **Surveys**
 - **Driver Intercept Survey (Completed)**
 - **Stakeholder/Community Survey (Completed)**
 - **Follow-up Stakeholder Survey**
- **Freight Forum and Public Meeting – March 20 (Completed)**
- **City Briefing – April 18**
- **Communication Tools**
 - **Project Landing Page**
 - **Social Media**



CITY BRIEFING
MAY 13, 2024



Best Practices Review

- **Sustainable Industrial Development**
- **Freight Mobility and Parking**
- **Multimodal Access and Mobility**

Inventory and Assessment Report

- **System Performance**
- **System Resiliency**
- **Truck Access and Pavement Conditions**
- **Truck Parking Management**
- **Traffic Safety**
- **Workforce Access**
- **Land Use and Development**

Traffic Study Report

	Stonecrest Freight Cluster Traffic Study: Existing Intersection Analysis									
	Roadway Stripping	Freight Conductive Infrastructure	Roadway Condition	Sidewalk Condition	Pedestrian Safety Features	Existing Traffic Flow	Intersection Sight Distance	Intersection Development Potential	Existing Roadway Lighting	Existing Transit Facilities
1) Panola Rd at Snapfinger Woods Dr										
2) US 278 at Panola Rd										
3) US 278 at DeKalb Medical Pkwy										
4) US 278 at Lithonia Industrial Blvd										
5) Lithonia Industrial Blvd at Marbut Rd										
6) Lithonia Industrial Blvd at Stone Mountain Lithonia Rd										
7) Lithonia Industrial Blvd at SR 124										
8) US 278 at Evans Mill Rd										
9) Max Cleland Blvd at Main St										
10) US 278 at Park Central Blvd										
11) SR 124 at Maddox Rd										
12) SR 124 at Rock Chapel Rd										
13) US 278 at SR 124										
14) Panola Rd at Dividend Dr										
Key	Good Condition			Fair Condition			Needs Improvement			

CITY BRIEFING
MAY 13, 2024



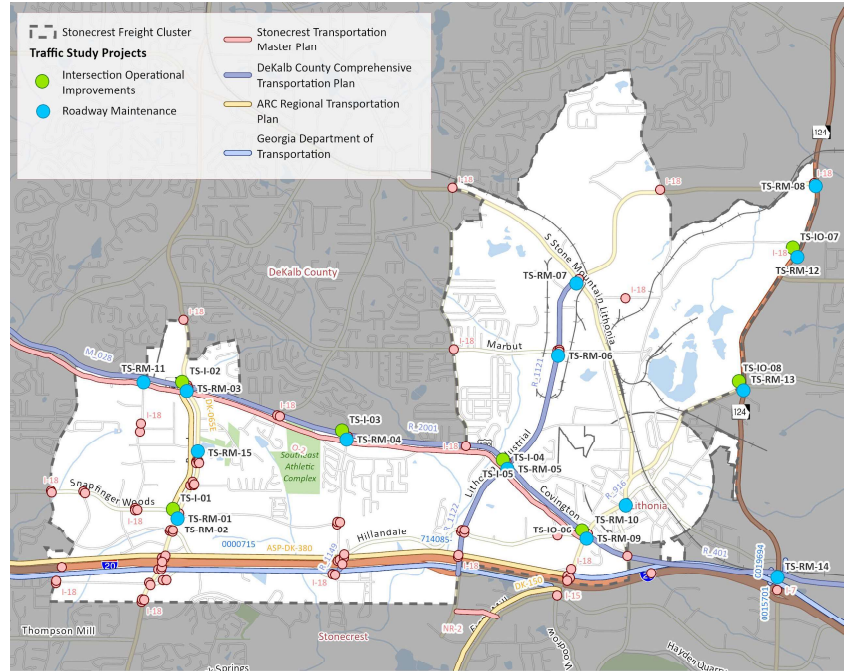


FREIGHT CLUSTER PLAN

IN COOPERATION WITH **ARC**

Short-Term Roadway Recommendations

Project Category	Project Name	Project Source	Project ID
Roadway Maintenance	US 278 at Dekalb Medical Pkwy Striping Improvements	Traffic Study Report	TS-RM-04
Roadway Maintenance	Panola Rd at Snapfinger Woods Dr Roadway Striping Renewal	Traffic Study Report	TS-RM-01
Roadway Maintenance	Panola Rd at Snapfinger Woods Dr Roadway Signage Improvements	Traffic Study Report	TS-RM-02
Roadway Maintenance	US 278 at Panola Rd Signage Improvements	Traffic Study Report	TS-RM-03
Roadway Maintenance	US 278 at Evans Mill Rd Striping and Signage Improvements	Traffic Study Report	TS-RM-09
Roadway Maintenance	US 278 at Lithonia Industrial Blvd Striping and Turn Radius Enhancements	Traffic Study Report	TS-RM-05
Roadway Maintenance	Lithonia Industrial Blvd at Marbut Rd Striping, Signage, and Roadway Enhancements	Traffic Study Report	TS-RM-06
Roadway Maintenance	US 278 at SR 124 Roadway Striping, Pavement, and Signage Improvements	Traffic Study Report	TS-RM-14
Roadway Maintenance	US 278 at Park Central Blvd Striping Renewal	Traffic Study Report	TS-RM-11
Roadway Maintenance	SR 124 at Lithonia Industrial Blvd Signage, Lighting, and Roadway Enhancements	Traffic Study Report	TS-RM-08
Roadway Maintenance	SR 124 at Rock Chapel Rd Signage Improvements	Traffic Study Report	TS-RM-13
Roadway Maintenance	Panola Rd at Dividend Dr Lighting, Striping, and Sight Distance Improvements	Traffic Study Report	TS-RM-15
Roadway Maintenance	Lithonia Industrial Blvd at Stone Mountain Lithonia Rd Striping and Signage Improvements	Traffic Study Report	TS-RM-07
Roadway Maintenance	SR 124 at Maddox Rd Roadway Lighting and Maintenance Improvements	Traffic Study Report	TS-RM-12
Roadway Maintenance	Max Cleland Blvd at Main St Striping Renewal	Traffic Study Report	TS-RM-10
Roadway Capacity and Operational Improvements	SR 12/SR 124 @ CSX #279861D	GDOT	0019694, 0015701
Roadway Capacity and Operational Improvements	Main Street at Max Cleland Boulevard Rail Crossing Improvement	DeKalb County Comprehensive Transportation Plan	R_916

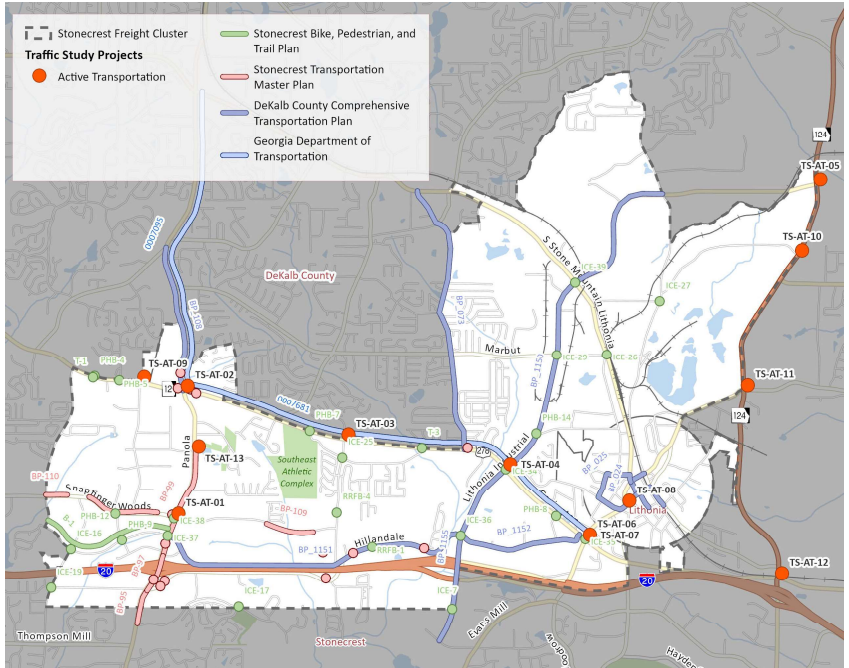


FREIGHT CLUSTER PLAN

IN COOPERATION WITH **ARC**

Short-Term Bike-Ped Recommendations

Project Category	Project Name	Project Source	Source ID
Public Transit & Active Transportation Connectivity	US 278 at Dekalb Medical Pkwy Sidewalk	Traffic Study Report	TS-AT-03
Public Transit & Active Transportation Enhancements	US 278 at Evans Mill Rd Pedestrian Safety	Traffic Study Report	TS-AT-07
Public Transit & Active Transportation Connectivity	Panola Rd at Snapfinger Woods Dr Sidewalk	Traffic Study Report	TS-AT-01
Public Transit & Active Transportation Enhancements	US 278 at Park Central Blvd Sidewalk and Pedestrian Safety Improvements	Traffic Study Report	TS-AT-09
Public Transit & Active Transportation Enhancements	SR 124 at Lithonia Industrial Blvd Pedestrian	Traffic Study Report	TS-AT-05
Public Transit & Active Transportation Improvements	Max Cleland Blvd at Main St Pedestrian Signage	Traffic Study Report	TS-AT-08
Public Transit & Active Transportation	Bench Upgrades @ 10 Locations	Stonecrest Transportation Master Plan	T-7
Public Transit & Active Transportation	Shelter Upgrades @ 5 Locations	Stonecrest Transportation Master Plan	T-7
Public Transit & Active Transportation	Fairington Rd Path Crossing	Stonecrest Transportation Master Plan	BP-43
Public Transit & Active Transportation Crossing	Lithonia Industrial Blvd @ Tribble St PHB	Stonecrest Bicycle, Pedestrian, and Trail Plan	PHB-14
Public Transit & Active Transportation	Panola Rd @ Panola Industrial Blvd/Hillandale Dr	Stonecrest Bicycle, Pedestrian, and Trail Plan	ICE-37
Public Transit & Active Transportation Rd	Lithonia Industrial Blvd @ Hillandale Dr/Chupp	Stonecrest Bicycle, Pedestrian, and Trail Plan	ICE-36
Public Transit & Active Transportation	Dekalb Medical Pkwy @ Hillvale Rd	Stonecrest Bicycle, Pedestrian, and Trail Plan	ICE-25
Public Transit & Active Transportation	Hillandale Dr @ Somers Pkwy RRFB Crossing	Stonecrest Bicycle, Pedestrian, and Trail Plan	RRFB-1
Public Transit & Active Transportation	S Stone Mtn Lithonia Rd @ Marbut Rd	Stonecrest Bicycle, Pedestrian, and Trail Plan	ICE-26
Public Transit & Active Transportation	Rogers Lake Rd @ Chapman Rd	Stonecrest Bicycle, Pedestrian, and Trail Plan	ICE-27
Public Transit & Active Transportation	Panola Industrial Blvd @ Miller Rd	Stonecrest Bicycle, Pedestrian, and Trail Plan	ICE-16
Public Transit & Active Transportation	Miller Rd @ Minola Rd	Stonecrest Bicycle, Pedestrian, and Trail Plan	ICE-19





FREIGHT CLUSTER PLAN

IN COOPERATION WITH

Policy Recommendations

Project ID	Recommendation Type	Policy Description	Source	Implementing Agencies	Timeframe (Initiation)
P-1	Roadway and Bridges	Study Panola Road, Lithonia Industrial Blvd for corridor improvements.	Inventory and Assessment/Best Practices	City of Stonecrest, DeKalb County	Short Term
P-2	Roadway and Bridges	Monitor pavement conditions, coordinate maintenance on designated truck routes.	Inventory and Assessment	City of Stonecrest, DeKalb County	Short Term
P-3	Roadway and Bridges	Ensure future freight access points meet roadway design standards.	Best Practices	City of Stonecrest, DeKalb County, GDOT	Short Term
P-4	System Resiliency	Monitor bridge conditions to maintain "State of Good Repair."	Inventory and Assessment	City of Stonecrest, GDOT	Short Term
P-5	System Resiliency	Develop emergency response plan for Stonecrest's freight network resiliency.	Inventory and Assessment	City of Stonecrest, DeKalb County	Long Term
P-6	Truck Route Management	Review truck routes to enhance freight mobility and safety.	Inventory and Assessment/Best Practices	City of Stonecrest, DeKalb County	Short Term
P-7	Truck Route Management	Revise truck route policies for clearer freight access guidelines.	Inventory and Assessment	City of Stonecrest, DeKalb County	Short Term
P-8	Truck Route Management	Promote freight operators' compliance with designated routes and restrictions.	Best Practices	City of Stonecrest, DeKalb County	Short Term
P-9	Truck Route Management	Encourage innovative technologies for accurate freight route information.	Best Practices	City of Stonecrest, DeKalb County, GDOT	Long Term
P-10	Truck Parking	Enforce gravel truck parking regulations to address congestion issues.	Best Practices	City of Stonecrest, DeKalb County	Short Term
P-11	Land Use/Development	Redevelopment potential at US 278, Lithonia Industrial Blvd intersection.	Best Practices	City of Stonecrest, DeKalb County	Short Term
P-12	Land Use/Development	Redevelopment potential at SR 124, Maddox Rd intersection.	Best Practices	City of Stonecrest, DeKalb County	Short Term
P-13	Land Use/Development	Modify zoning ordinances to manage land use conflicts effectively.	Inventory and Assessment	City of Stonecrest	Long Term
P-14	Freight-Related Industries	Develop strategy for flex space viability or redevelopment.	Inventory and Assessment	City of Stonecrest, East Metro Community Improvement District (CID)	Long Term
P-15	Freight-Related Industries	Review development policies to ease construction of modern facilities.	Inventory and Assessment	City of Stonecrest	Short Term
P-16	Freight-Related Industries	Ensure road infrastructure meets freight transportation needs adequately.	Inventory and Assessment	City of Stonecrest, DeKalb County	Short Term
P-17	Freight-Related Industries	Align financial incentives with freight-related economic strategies effectively.	Inventory and Assessment	City of Stonecrest, East Metro Community Improvement District (CID)	Long Term



FREIGHT CLUSTER PLAN

IN COOPERATION WITH

Policy Recommendations

Project ID	Recommendation Type	Policy Description	Source	Implementing Agencies	Timeframe (Initiation)
P-18	Freight-Related Industries	Partner with DeKalb County to offer incentives for qualifying developments.	Inventory and Assessment	City of Stonecrest, DeKalb County	Long Term
P-19	Freight-Related Industries	Support entrepreneurship, especially in freight-related industries.	Inventory and Assessment	City of Stonecrest, East Metro Community Improvement District (CID)	Long Term
P-20	Freight-Related Industries	Engage with businesses to understand specific industry needs in Stonecrest.	Inventory and Assessment	City of Stonecrest, East Metro Community Improvement District (CID)	Short Term
P-21	Workforce Access	Support Bike and Pedestrian plans for safe workforce access.	Inventory and Assessment	City of Stonecrest, ARC	Short Term
P-22	Workforce Access	Provide safe workforce access routes and amenities in collaboration.	Inventory and Assessment	MARTA, SRTA, City of Stonecrest, DeKalb County	Short Term
P-23	Workforce Access	Advocate for high-speed transit access for regional workforces.	Inventory and Assessment	MARTA, SRTA, City of Stonecrest, DeKalb County, ARC	Long Term
P-24	Workforce Access	Establish Stonecrest Mobility Center at Mall at Stonecrest.	Inventory and Assessment	MARTA, SRTA, City of Stonecrest, DeKalb County, ARC	Long Term
P-25	Workforce Access	Promote Georgia Commute Options among Atlanta's freight workforce.	Inventory and Assessment	City of Stonecrest, Georgia Commute Options	Short Term
P-26	Workforce Access	Encourage Complete Streets in industrial and commercial redevelopments.	Inventory and Assessment	City of Stonecrest, DeKalb County	Short Term
P-27	Safety	Conduct awareness campaigns on traffic crash prevention for drivers.	Inventory and Assessment	City of Stonecrest, DeKalb County	Long Term
P-28	Alternative Fuel	Implement National Electric Vehicle Infrastructure Program in Stonecrest.	Best Practices	City of Stonecrest, GDOT	Short Term
P-29	Alternative Fuel	Coordinate infrastructure provision for clean energy fuels with DeKalb County.	Best Practices	City of Stonecrest, DeKalb County	Long Term
P-30	Smart Corridor	Implement advanced technologies for optimized freight movement with GDOT.	Best Practices	City of Stonecrest, GDOT	Long Term
P-31	Special Freight Tax District	Investigate a special freight tax district to fund projects within the Stonecrest freight cluster area.	Stakeholder Outreach	City of Stonecrest, DeKalb County	Short Term
P-32	Agency Collaboration	Maintain collaboration with community organizations for effective freight policies.	Inventory and Assessment	City of Stonecrest, DeKalb County, ARC, GDOT	Short Term



Questions?

Next Steps:



Finalize the Outreach Activities (Stakeholder Meeting).



Finalize the Fiscally-Constrained Short-Term Action Plan and Fiscally-Unconstrained Long-Term Vision Project List.



Finalize the Recommendations Report.



THANK YOU!

Wade Carroll

CONSULTANT PROJECT MANAGER

PHONE: (404) 566-1033

EMAIL: wcarroll@metroanalytics.com

