



CITY OF ST. HELENS PLANNING DEPARTMENT  
**M E M O R A N D U M**

---

**TO:** City Council  
**FROM:** Jacob A. Graichen, AICP, City Planner  
**RE:** Authorize Mayor to sign final plat for Partition PT.3.20  
**DATE:** August 24, 2020 (for the September 2, 2020 regular session)

---

The final plat is the formal document that is ultimately recorded with the County, making the partition official. In addition to meeting many substantive and technical requirements, the final plat also requires certain signatures.

Normally, the only signature necessary is the City Planner's. But sometimes, we need the Mayor's as well, like in this case due to some right-of-way dedication.

Generally, by signing the final plat the City is saying that all requirements have been met.

**Staff has determined that all necessary requirements have been met for the purpose of signing the final plat.**

**Please authorize the Mayor to sign the final plat for this partition.**



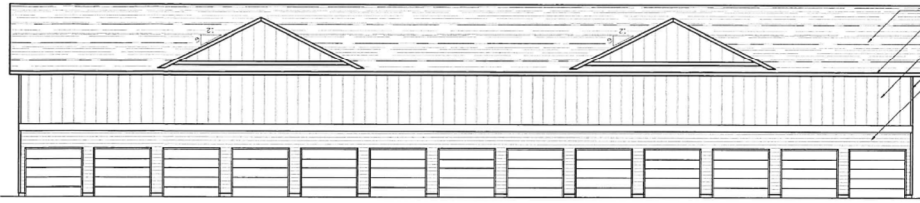
11.06.2018



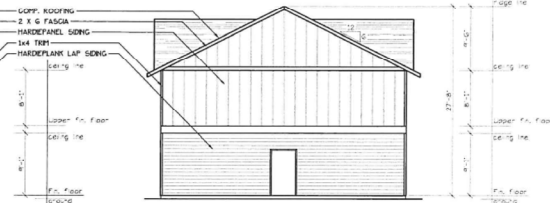
05.29.2020



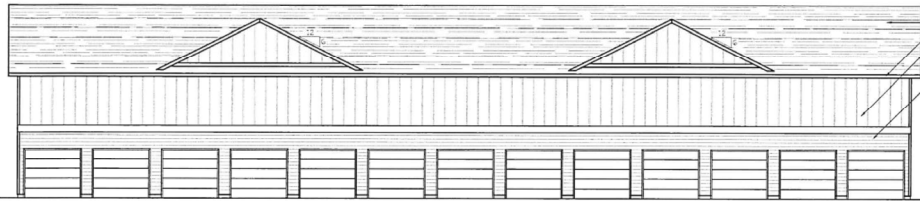
05.29.2020



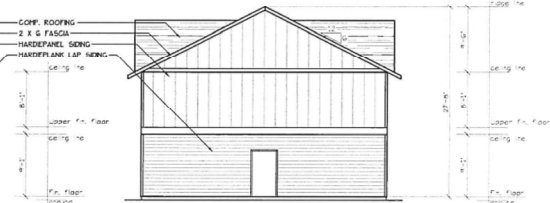
**EAST ELEVATION**  
SCALE: 1/8" = 1'-0"



**NORTH ELEVATION**  
SCALE: 1/8" = 1'-0"



**WEST ELEVATION**  
SCALE: 1/8" = 1'-0"



**SOUTH ELEVATION**  
SCALE: 1/8" = 1'-0"

**MULTI / TECH**  
CONSULTANTS  
**AUSUBERGER BERGNER, INC.**  
1000 10th Street, Suite 100  
St. Helena, CA 94574  
707.762.1100

**BUILDING ELEVATIONS**  
**BRAYDEN STREET STORAGE**

**RECEIVED**  
**FEB 10 2020**  
**CITY OF ST. HELENS**

NO CHANGES, MODIFICATIONS OR ADDITIONS TO THESE DRAWINGS WITHOUT WRITTEN PERMISSION FROM THE DESIGN ENGINEER.  
DIMENSIONS & NOTES TAKE PRECEDENCE OVER GRAPHICAL REPRESENTATION.

DATE: 06/14/19  
DESIGN: P.J.L.  
DRAWN: G.L.D.  
CHECKED: M.D.S.  
DATE: JUNE 2019  
SCALE: AS SHOWN  
JOB # 5776



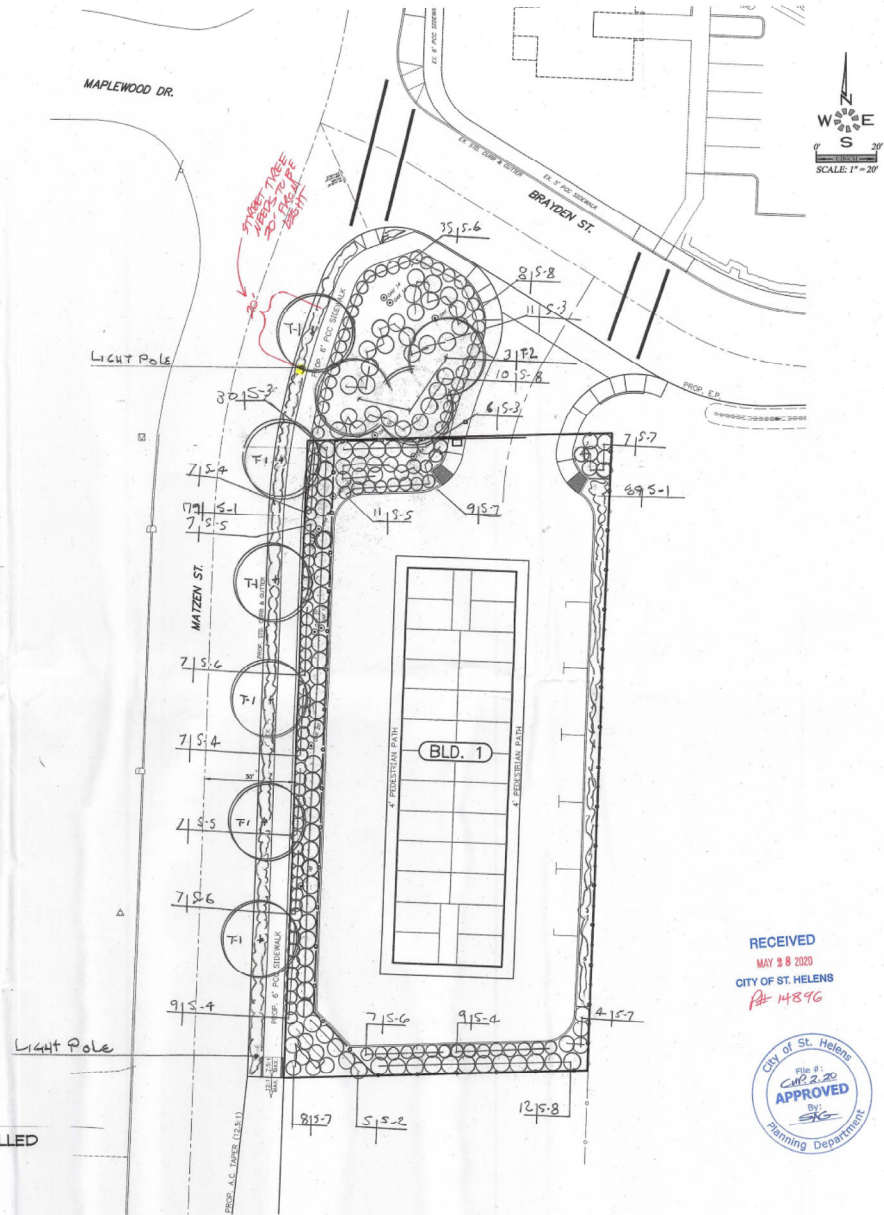
**A1.2**

# STORAGE BUILDING PLANT PALETTE

QTY.	SYM.	BOTANICAL NAME	COMMON NAME	SIZE	CONDITION	REMARKS
6	T-1	<i>Carpinus betulus</i> 'Columnaris'	Columnar European Hornbeam	1 1/2"-2" cal.	B & B	6' Standard
3	T-2	<i>Quercus bicolor</i> 'Autumn Gold'	Autumn Gold Ginko	1 1/2"-2" cal.	B & B	6' Standard
SHRUBS						
208	S-1	<i>Arctostaphylos uva-ursi</i> (Kinkinnick)	Kinkinnick	2 gal.	cont.	Planted 3' oc
10	S-2	<i>Euonymus alatus</i> 'Compacta'	Burning Bush Winged Euonymus	2 gal.	cont.	Full
47	S-3	<i>Ligularium japonicum</i> 'Tensatum'	Texas Wax-Leaf Privet	5 gal.	cont.	Full
35	S-4	<i>Pennisetum alopecuroides</i> 'Hamelin'	Dwarf Fountain Grass	2 gal.	cont.	Full
25	S-5	<i>Pennisetum alopecuroides</i> 'Chinese'	Chinese Fountain Grass	2 gal.	cont.	Full
26	S-6	<i>Pennisetum setaceum</i> 'rostratum'	Purple Fountain Grass	2 gal.	cont.	Full
24	S-7	<i>Spiraea japonica</i> 'Double Pink'	Double Pink Spiraea	2 gal.	cont.	Full
30	S-8	<i>Viburnum davidii</i>	David's Viburnum	2 gal.	cont.	Full

CONTRACTOR TO VERIFY ALL QUANTITIES OF PLANT MATERIALS WITH LANDSCAPE DESIGN & CONSULTANTS PRIOR TO INSTALLATION  
PLANT MATERIAL SUBSTITUTIONS MAY BE MADE BY THE OWNER FOR PLANT MATERIALS OF SIMILAR HABIT, FLOWERING CHARACTERISTIC  
AND/OR STRUCTURE OF GROWTH DUE TO AVAILABILITY, WATER, SOIL, AND SUN REQUIREMENTS.

PERMANENT UNDERGROUND IRRIGATION SYSTEM TO BE INSTALLED



RECEIVED  
MAY 28 2020  
CITY OF ST. HELENS  
# 14896



PRINTED  
MAY 27 2020  
IF THIS STAMP IS NOT RED  
THESE PLANS ARE NOT  
AUTHORIZED BY MULTITECH  
ENGINEERING SERVICES

LANDSCAPE & IRRIGATION DESIGN BY:  
**LANDSCAPE DESIGN  
&  
CONSULTANTS LLC**  
Doing business since 1985  
631 W. WOODRIDGE ST., S.E. SAULSBURY, OR 97130 PHONE: (503) 555-6500

**MULTI/TECH**  
ENGINEERING SERVICES, INC.  
1100 N. W. 10TH AVE., SUITE 100  
PORTLAND, OR 97227 FAX: (503) 244-1200  
www.multitecheng.com info@multitecheng.com

**SCHEMATIC  
LANDSCAPE  
PLAN**

**BRAYDEN STREET STORAGE**

NO CHANGES, MODIFICATIONS  
OR REPRODUCTION TO BE  
MADE WITHOUT WRITTEN  
APPROVAL OF THE  
DESIGN ENGINEER.  
DIMENSIONS & NOTES TAKE  
PRECEDENCE OVER  
GRAPHICAL REPRESENTATION.

DESIGN: M.E.G.  
DRAWN: D.C.S.  
CHECKED: J.F.B.  
DATE: FEB. 2019  
SCALE: AS SHOWN

REGISTERED PROFESSIONAL  
ENGINEER  
MAY 14 2019  
MADE IN OREGON  
EPDES 06-30-2021  
JOB # 6778

**L1.1**

# PARTITION PLAT 2020-

## INSTRUMENT NUMBER \_\_\_\_\_

### IN THE SE 1/4 SEC. 05, T. 4 N., R. 1 W., W.M. CITY OF ST. HELENS, COLUMBIA COUNTY, OREGON

BY:  
MULTI/TECH ENGINEERING SERVICES, INC.  
1155 13TH ST. S.E. SALEM, OREGON 97302  
503-363-9227

I HEREBY CERTIFY THIS TO BE A TRUE AND EXACT COPY OF THE ORIGINAL PLAT

ROBERT D. HAMMAN

REGISTERED  
PROFESSIONAL  
LAND SURVEYOR

OREGON  
JULY 13, 2004  
ROBERT D. HAMMAN  
64202LS

EXPIRES: 6-30-2021

REFERENCE SURVEYS  
1. CS 1768  
2. CS 4843  
3. CS 4930  
4. CS 6330  
5. BOOK 7, PAGES 104-107  
"MATZEN SUBDIVISION"

REFERENCE DOCUMENTS  
6. 2020-003139  
7. 2020-003140  
8. 2020-003141  
9. 2020-003142

**NOTES:**

1. ALL MONUMENTS FOUND IN GOOD CONDITION AND WITHIN 0.2' OF THE SURFACE OF THE GROUND UNLESS OTHERWISE NOTED.

**LEGEND**

[ ] = MEASURED AND RECORD DATA PER 5 UNLESS NOTED OTHERWISE  
( ) = RECORD DATA PER SURVEY OR DOCUMENT NOTED  
CS = COUNTY SURVEY  
W/YPC = WITH YELLOW PLASTIC CAP  
L = LOT  
B. = BOOK  
P. = PAGE  
V. = VOLUME  
R. = REEL  
PUE = PUBLIC UTILITY EASEMENT  
ROW = RIGHT OF WAY

● = FOUND MONUMENT SEE TABLE

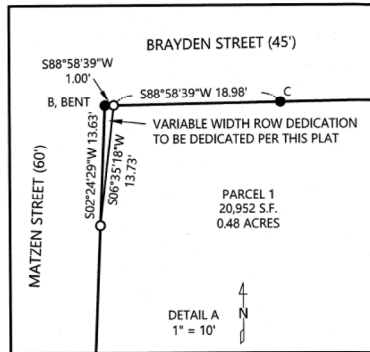
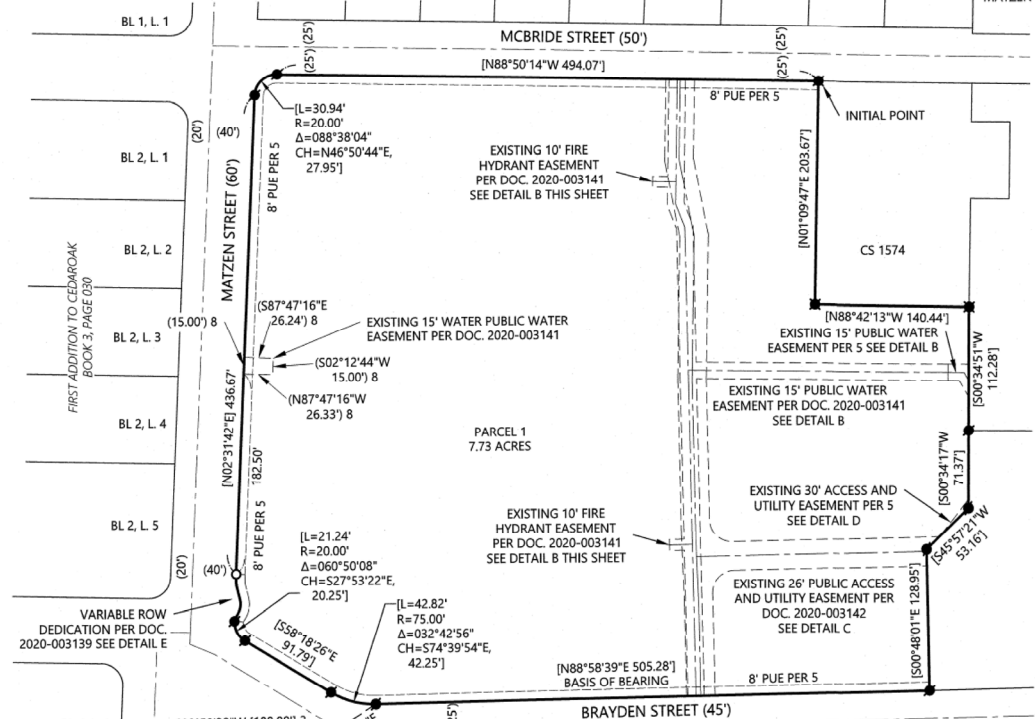
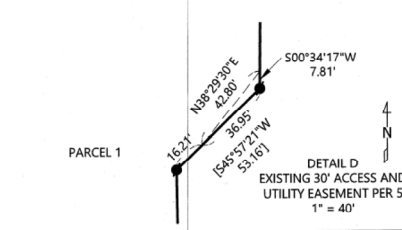
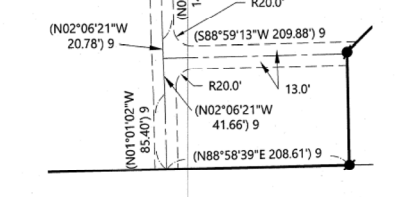
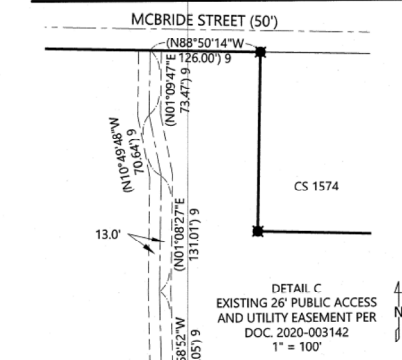
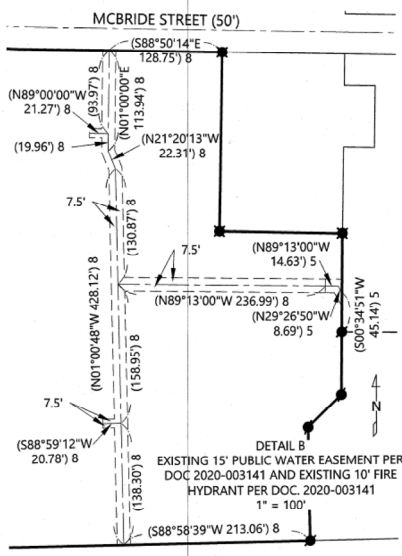
■ = 5/8" IRON ROD WITH YELLOW PLASTIC CAP SCRIBED "MULTI/TECH ENG." PER 5

■ = 5/8" IRON ROD WITH YELLOW PLASTIC CAP SCRIBED "MULTI/TECH ENG." PER 4

○ = SET 5/8" X 30" IRON ROD WITH YELLOW PLASTIC CAP SCRIBED "MULTI/TECH ENG."

**MONUMENT TABLE**

- A. 5/8" IRON ROD W/YPC SCRIBED "REYNOLDS LAND SURVEYING, INC." PER CS 4843
- B. 5/8" IRON ROD W/YPC SCRIBED "REYNOLDS LAND SURVEYING, INC." PER CS 4930, BENT
- C. 1" IRON PIPE PER CS 1768



1" = 80'  
07/16/2020  
#6778