

Filepath: G:\00_MFA_Civil\3D\00_PROJECTS\0830.03 - City of St. Helens\EXHIBIT\City Council Visualization\Visualization_Top down.dwg

Printed by: Billy Tackett

Date: 3/11/2025 12:18:17 PM



DRAWING NOT TO SCALE

MFA JOB #:	M0830.03.007
ISSUE DATE:	12/06/2024
CHECKED:	C. GOKCORA
DRAWN:	L. DANIEL

 MAUL FOSTER ALONGI
 3140 NE BROADWAY STREET
 PORTLAND, OR 97232
 PHONE: 971.544.2139
 www.maulfoster.com

AERIAL OVERVIEW OF ST HELENS WATERFRONT
 ST. HELENS WATERFRONT REDEVELOPMENT-LAGOON REPURPOSING PROJECT-MARKET STUDY UPDATE

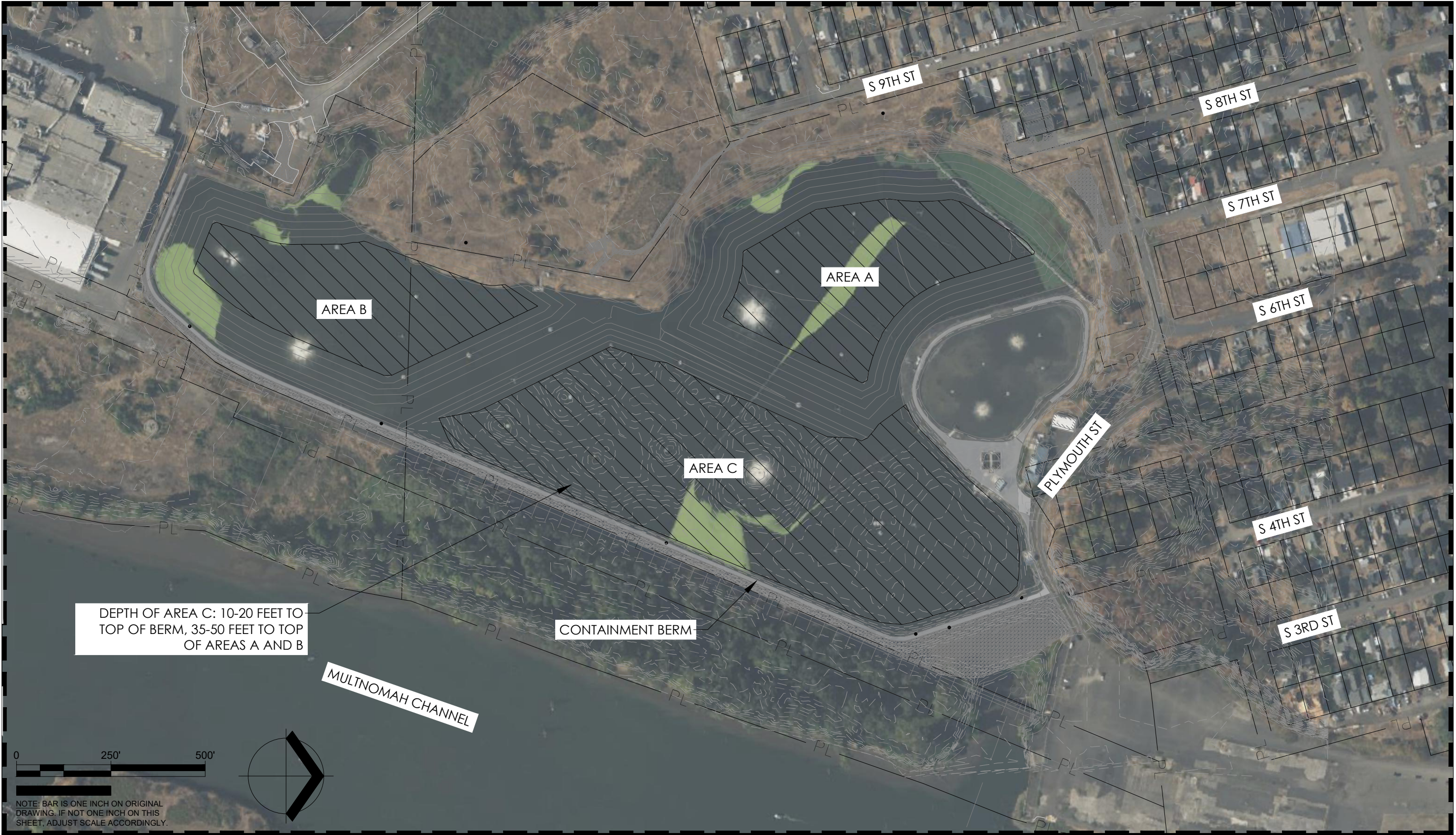
CITY OF ST. HELENS
 ST. HELENS, OR

EXHIBIT
 A

Filepath: G:\00_MFA_Civil\3D\00_PROJECTS\0830.03 - City of St. Helens\EXHIBIT\City Council Visualization\Visualization_Top down.dwg

Printed by: Billy Tackett

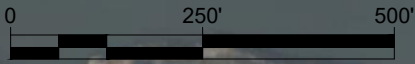
Date: 3/11/2025 12:17:46 PM



DEPTH OF AREA C: 10-20 FEET TO TOP OF BERM, 35-50 FEET TO TOP OF AREAS A AND B

CONTAINMENT BERM

MULTNOMAH CHANNEL



NOTE: BAR IS ONE INCH ON ORIGINAL DRAWING. IF NOT ONE INCH ON THIS SHEET, ADJUST SCALE ACCORDINGLY.

MFA JOB #: M0830.03.007
 ISSUE DATE: 12/06/2024
 CHECKED: C. GOKCORA
 DRAWN: L. DANIEL

MAUL FOSTER ALONGI
 3140 NE BROADWAY STREET
 PORTLAND, OR 97232
 PHONE: 971.544.2139
 www.maulfooster.com

AERIAL OVERVIEW OF ST HELENS WATERFRONT REDEVELOPMENT
 ST. HELENS WATERFRONT REDEVELOPMENT-LAGOON REPURPOSING PROJECT-MARKET STUDY UPDATE
 CITY OF ST. HELENS
 ST. HELENS, OR

EXHIBIT B