


## COUNCIL ACTION SHEET

<b>To:</b>	The Mayor and Members of City Council	
<b>From:</b>	Mouhamad Zaher, Public Works Director	
<b>Date:</b>	December 7th, 2022	
<b>Subject:</b>	Award Pickup Purchase for Public Works Operation	

### Background:

The 2021/22 Budget included a \$70,000 for the purchase of a new pickup Truck for use by the Public Works Operation Division. This will replace Vehicle No. 40, a 2009 Ford Sport Trac which was declared a surplus last year due to its major mechanical and safety issues, in addition, it has also reached the end of its useful life. A specification was prepared by the city mechanic Brett Long, which was reviewed and approved by the Public Works Director.

State contracting law allows utilization of a cooperative procurement process for obtaining competitive bids to streamline the purchasing process and save costs. Competitive bids for vehicles were performed. The low bid was provided by Emmert Motors, a local auto dealer at a total amount of \$44,845.00. An additional quotes were requested from other auto dealers for a similar vehicle & the costs were higher at \$49,985.00 from Speedway Chevrolet & \$52,035.00 from Chevrolet of Bend.

### Recommendation:

Council award bid for the vehicle purchase to Emmert Motors, in the amount of \$44,845.00.

### Attachment:

Emmert Motors quote & Car Window Sticker.

**Emmert Motors**

1 message

**Riley Cronin** <riley\_cronin@emmertmotors.motosnap.com>  
To: cronin.riley38@gmail.com

Mon, Nov 21, 2022 at 4:06 PM



New — Used — Certified — Selection

2175 Columbia Blvd., St Helens, OR 97051  
ph: 503-438-4146  
www.emmertmotors.com

MSRP: 52,945  
Discount: 8,100  
Your Price: 44,845

**2022 Chevrolet Silverado 1500 LT 4WD**

Wheels: 20" x 9" Painted Aluminum, Tires:  
275/60R20SL AT BW, Turbocharged Gas I4  
2.7L/166, 4WD, automatic, 8 miles, Summit White,  
stock # 2C126, new... [view details](#)

Call for more  
information

**Riley J. Cronin**

Internet Sales Manager  
Emmert Motors  
(503) 397-1061 Dealership  
(360) 977-0312 Cell

**facebook.****EMMERT MOTORS**

4.4 ★★★★★ 43 Google reviews  
Chevrolet dealer in St. Helens, Oregon

**Scott says** "Clear and direct in all interactions. No games, just business. So good that we worked with them to find a dealer locate vehicle to purchase. Thank you Riley!"

**Donnielle says** "Cameron was very helpful and worked hard to get us the car we wanted. We will be recommending him for sure."

**Leah says** "We had such a great experience here! We actually bought TWO cars from Emmert. They are nice, relaxed, and very great to work with! When our leases expire, we will probably get two more from them." 😊

You are receiving this email because you inquired about or purchased a vehicle from Emmert Motors recently or in the past. If you prefer not to receive further emails from us, [click here to unsubscribe](#). Alternatively, you can send a written request to the address below. We'll remove you from our list as quickly as possible.

This email was sent to [cronin.riley38@gmail.com](mailto:cronin.riley38@gmail.com) on November 21, 2022.

To contact us please visit <http://www.emmertmotors.com> or call (503) 397-1061.

This email was delivered to you by:

Emmert Motors  
2175 Columbia Blvd  
Saint Helens, OR 97051



2022 SILVERADO 1500 CREW LT  
4WD

EXTERIOR: SUMMIT WHITE  
INTERIOR: JET BLACK

ENGINE: 2.7L TURBO HIGH-OUTPUT  
TRANSMISSION: 8-SPEED AUTO

Visit us at [www.chevy.com](http://www.chevy.com)

STANDARD EQUIPMENT

ITEMS FEATURED BELOW ARE INCLUDED AT NO EXTRA CHARGE IN THE STANDARD VEHICLE PRICE SHOWN

CREW CAB SHORT BED 4WD

OWNER BENEFITS

- 3 YEAR / 36,000 MILE\* BUMPER-TO-BUMPER LIMITED WARRANTY
- 5 YEAR / 60,000 MILE\* POWERTRAIN LIMITED WARRANTY, ROADSIDE ASSISTANCE & COURTESY TRANSPORTATION
- FIRST MAINTENANCE VISIT
- WHICHEVER COMES FIRST
- \*SEE CHEVROLET.COM OR DEALER FOR TERMS, DETAILS & LIMITS

SAFETY & SECURITY

- CHEVY SAFETY ASSIST
- \*AUTOMATIC EMERGENCY BRAKING
- \*FORWARD COLLISION ALERT
- \*FRONT PEDESTRIAN BRAKING
- \*LANE KEEP ASSIST W/LANE

DEPARTURE WARNING

- \*FOLLOWING DISTANCE INDICATOR
- \*INTELLIBEAM-AUTO HIGH BEAM
- HD REAR VISION CAMERA
- TEEN DRIVER MODE
- TIRE PRESSURE MONITORING WITH TIRE FILL ALERT

PERFORMANCE & MECHANICAL

- AUTO LOCKING REAR DIFF
- AUTOTRAC TRANSFER CASE
- 220 AMP ALTERNATOR
- STABILITRAK W/ TRAILER SWAY CONTROL & HILL START ASSIST
- TRAILERING PACKAGE WITH HITCH GUIDANCE
- BRAKE PAD WEAR INDICATOR

CONNECTIVITY & TECHNOLOGY

CHEVROLET INFOTAINMENT 3 PREMIUM WITH GOOGLE BUILT-IN 13.4" DIAG HD COLOR TOUCHSCREEN INCL AM/FM BLUETOOTH FOR MUSIC & MOST PHONES W/ WIRELESS

ANDROID AUTO & APPLE CARPLAY FOR COMPATIBLE PHONES 12.3" DIAG DIGITAL DRIVER INFORMATION CENTER

- ONSTAR (R) SERVICES & WI-FI (R) HOTSPOT CAPABLE; SEE ONSTAR.COM FOR TERMS
- SIRIUSXM RADIO CAPABLE, TRIAL INCLUDED WITH SUBSCRIPTION SOLD SEPARATELY
- 120V POWER OUTLET IN CARGO BED & INSTRUMENT PANEL
- USB PORTS
- KEYLESS OPEN, LOCK, & START
- REMOTE START
- REAR SEAT REMINDER

INTERIOR

- DUAL ZONE CLIMATE CONTROL
- POWER WINDOWS
- FRONT 40/20/40 HEATED BENCH SEATS W/ ARMREST & UNDERSEAT STORAGE

- 10-WAY POWER DRIVER SEAT
- REAR 60/40 FOLDING BENCH SEAT
- HEATED & LEATHER-WRAPPED STEERING WHEEL WITH AUDIO CONTROLS
- CARPETED FLOOR
- RUBBERIZED VINYL FLOOR MATS

EXTERIOR

- CORNERSTEP REAR BUMPER
- 12 TIE DOWNS IN CARGO BED
- LED CARGO AREA LIGHTING
- EZ LIFT, POWER LOCK, & RELEASE TAILGATE
- POWER ADJUSTABLE HEATED MIRRORS
- LED REFLECTOR HEADLAMPS
- LED SIGNATURE DAYTIME RUNNING LAMPS
- REAR-WINDOW DEFOGGER
- FRONT RECOVERY HOOKS

MANUFACTURER'S SUGGESTED RETAIL PRICE

STANDARD VEHICLE PRICE \$51,400.00

OPTIONS & PRICING

OPTIONS INSTALLED BY THE MANUFACTURER (MAY REPLACE STANDARD EQUIPMENT SHOWN)

20" ALUMINUM WHEELS W/ GRAZEN 1,100.00  
PAINTED POCKETS  
ALL-TERRAIN TIRES 200.00  
CREDIT - NOT EQUIPPED WITH -50.00  
STEERING COLUMN LOCK  
GVWR: 7,000 LBS. (3,175 KG) INC.  
REAR AXLE: 3.42 RATIO INC.  
CONVENIENCE PACKAGE INC.  
ALL STAR EDITION INC.

TOTAL OPTIONS \$1,250.00  
TOTAL VEHICLE & OPTIONS \$52,650.00  
DESTINATION CHARGE 1,795.00  
TOTAL BEFORE SAVINGS \$54,445.00  
2.7L TURBO HIGH-OUTPUT ENGINE -1,500.00  
CREDIT

TOTAL VEHICLE PRICE\* \$52,945.00

EPA DOT Fuel Economy and Environment



Gasoline Vehicle

Fuel Economy

**18** MPG  
combined city/hwy  
**5.6** gallons per 100 miles

SILVERADO 4WD

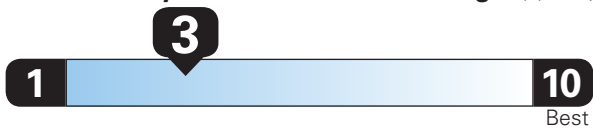
Standard pickup trucks range from 12 to 70 MPG. The best vehicle rates 142 MPGe.

You spend  
**\$3,250**  
more in fuel costs  
over 5 years  
compared to the  
average new vehicle.

G H C

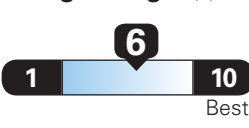
Annual fuel cost  
**\$1,950**

Fuel Economy & Greenhouse Gas Rating (tailpipe only)



This vehicle emits 489 grams CO<sub>2</sub> per mile. The best emits 0 grams per mile (tailpipe only). Producing and distributing fuel also create emissions; learn more at [fuelconomy.gov](http://fuelconomy.gov).

Smog Rating (tailpipe only)



Actual results will vary for many reasons, including driving conditions and how you drive and maintain your vehicle. The average new vehicle gets 27 MPG and costs \$6,500 to fuel over 5 years. Cost estimates are based on 15,000 miles per year at \$2.35 per gallon. MPGe is miles per gasoline gallon equivalent. Vehicle emissions are a significant cause of climate change and smog.

**fuelconomy.gov**

Calculate personalized estimates and compare vehicles



Smartphone  
QR Code™



GOVERNMENT 5-STAR SAFETY RATINGS

Overall Vehicle Score

★★★★★

Based on the combined ratings of frontal, side and rollover.  
Should ONLY be compared to other vehicles of similar size and weight.

Frontal  
Crash

Driver  
Passenger

★★★★★

Based on the risk of injury in a frontal impact.  
Should ONLY be compared to other vehicles of similar size and weight.

Side  
Crash

Front seat  
Rear seat

★★★★★

Based on the risk of injury in a side impact.

Rollover

★★★★

Based on the risk of rollover in a single-vehicle crash.

Star ratings range from 1 to 5 stars (★★★★★) with 5 being the highest.  
Source: National Highway Traffic Safety Administration (NHTSA)  
[www.safercar.gov](http://www.safercar.gov) or 1-888-327-4236



Equipped with the safety and  
security of OnStar®

Visit [onstar.com](http://onstar.com) for details.

[onstar.com/privacy](http://onstar.com/privacy)

PARTS CONTENT INFORMATION

FOR VEHICLES IN THIS CARLINE:

U.S./CANADIAN PARTS CONTENT: 42%

MAJOR SOURCES OF FOREIGN PARTS  
CONTENT: MEXICO 44%

NOTE: PARTS CONTENT DOES NOT INCLUDE FINAL  
ASSEMBLY, DISTRIBUTION, OR OTHER NON-PARTS COSTS.

FOR THIS VEHICLE:

FINAL ASSEMBLY POINT:

ROANOKE, IN U.S.A.

COUNTRY OF ORIGIN:

ENGINE: UNITED STATES

TRANSMISSION: UNITED STATES

This label has been applied pursuant to Federal law – Do not remove prior to delivery to the ultimate purchaser. \*Includes Manufacturer's Recommended Pre-Delivery Service. Does not include dealer installed options and accessories not listed above, local taxes or license fees.

© 2009 General Motors LLC  
GMLBL\_PROD\_0041 – 08/19/2022

ORDER NO BVVKX7 SALES CODE E  
SALES MODEL CODE CK10543  
DEALER NO 19288  
FINAL ASSEMBLY:  
ROANOKE, IN U.S.A.

VIN 1GCPDDEK4NZ645077 REISSUE

DEALER TO WHOM DELIVERED  
EMMERT MOTORS  
2175 COLUMBIA BLVD  
SAINT HELENS, OR 97051-1738





2022 SILVERADO 1500 CREW LT  
4WD

EXTERIOR: SUMMIT WHITE  
INTERIOR: JET BLACK

ENGINE: 2.7L TURBO HIGH-OUTPUT  
TRANSMISSION: 8-SPEED AUTO

Visit us at [www.chevy.com](http://www.chevy.com)

STANDARD EQUIPMENT

ITEMS FEATURED BELOW ARE INCLUDED AT NO EXTRA CHARGE IN THE STANDARD VEHICLE PRICE SHOWN

CREW CAB SHORT BED 4WD

OWNER BENEFITS

- 3 YEAR / 36,000 MILE\* BUMPER-TO-BUMPER LIMITED WARRANTY
- 5 YEAR / 60,000 MILE\* POWERTRAIN LIMITED WARRANTY, ROADSIDE ASSISTANCE & COURTESY TRANSPORTATION
- FIRST MAINTENANCE VISIT
- WHICHEVER COMES FIRST
- \*SEE CHEVROLET.COM OR DEALER FOR TERMS, DETAILS & LIMITS

SAFETY & SECURITY

- CHEVY SAFETY ASSIST
- \*AUTOMATIC EMERGENCY BRAKING
- \*FORWARD COLLISION ALERT
- \*FRONT PEDESTRIAN BRAKING
- \*LANE KEEP ASSIST W/LANE

DEPARTURE WARNING

- \*FOLLOWING DISTANCE INDICATOR
- \*INTELLIBEAM-AUTO HIGH BEAM
- HD REAR VISION CAMERA
- TEEN DRIVER MODE
- TIRE PRESSURE MONITORING WITH TIRE FILL ALERT

PERFORMANCE & MECHANICAL

- AUTO LOCKING REAR DIFF
- AUTOTRAC TRANSFER CASE
- 220 AMP ALTERNATOR
- STABILITRAK W/ TRAILER SWAY CONTROL & HILL START ASSIST
- TRAILERING PACKAGE WITH HITCH GUIDANCE
- BRAKE PAD WEAR INDICATOR

CONNECTIVITY & TECHNOLOGY

CHEVROLET INFOTAINMENT 3 PREMIUM WITH GOOGLE BUILT-IN 13.4" DIAG HD COLOR TOUCHSCREEN INCL AM/FM BLUETOOTH FOR MUSIC & MOST PHONES W/ WIRELESS

ANDROID AUTO & APPLE CARPLAY FOR COMPATIBLE PHONES 12.3" DIAG DIGITAL DRIVER INFORMATION CENTER

- ONSTAR (R) SERVICES & WI-FI (R) HOTSPOT CAPABLE; SEE ONSTAR.COM FOR TERMS
- SIRIUSXM RADIO CAPABLE, TRIAL INCLUDED WITH SUBSCRIPTION SOLD SEPARATELY
- 120V POWER OUTLET IN CARGO BED & INSTRUMENT PANEL
- USB PORTS
- KEYLESS OPEN, LOCK, & START
- REMOTE START
- REAR SEAT REMINDER

INTERIOR

- DUAL ZONE CLIMATE CONTROL
- POWER WINDOWS
- FRONT 40/20/40 HEATED BENCH SEATS W/ ARMREST & UNDERSEAT STORAGE

- 10-WAY POWER DRIVER SEAT
- REAR 60/40 FOLDING BENCH SEAT
- HEATED & LEATHER-WRAPPED STEERING WHEEL WITH AUDIO CONTROLS
- CARPETED FLOOR
- RUBBERIZED VINYL FLOOR MATS

EXTERIOR

- CORNERSTEP REAR BUMPER
- 12 TIE DOWNS IN CARGO BED
- LED CARGO AREA LIGHTING
- EZ LIFT, POWER LOCK, & RELEASE TAILGATE
- POWER ADJUSTABLE HEATED MIRRORS
- LED REFLECTOR HEADLAMPS
- LED SIGNATURE DAYTIME RUNNING LAMPS
- REAR-WINDOW DEFOGGER
- FRONT RECOVERY HOOKS

MANUFACTURER'S SUGGESTED RETAIL PRICE

STANDARD VEHICLE PRICE \$51,400.00

OPTIONS & PRICING

OPTIONS INSTALLED BY THE MANUFACTURER (MAY REPLACE STANDARD EQUIPMENT SHOWN)

20" ALUMINUM WHEELS W/ GRAZEN PAINTED POCKETS	1,100.00
ALL-TERRAIN TIRES	200.00
CREDIT - NOT EQUIPPED WITH STEERING COLUMN LOCK	-50.00
GVWR: 7,000 LBS. (3,175 KG)	INC.
REAR AXLE: 3.42 RATIO	INC.
CONVENIENCE PACKAGE	INC.
ALL STAR EDITION	INC.

TOTAL OPTIONS	\$1,250.00
TOTAL VEHICLE & OPTIONS	\$52,650.00
DESTINATION CHARGE	1,795.00
TOTAL BEFORE SAVINGS	\$54,445.00
2.7L TURBO HIGH-OUTPUT ENGINE CREDIT	-1,500.00

TOTAL VEHICLE PRICE\* \$52,945.00

EPA DOT Fuel Economy and Environment



Gasoline Vehicle

Fuel Economy

**18** MPG  
combined city/hwy  
**5.6** gallons per 100 miles

SILVERADO 4WD

Standard pickup trucks range from 12 to 70 MPG. The best vehicle rates 142 MPGe.

You spend  
**\$3,250**  
more in fuel costs  
over 5 years  
compared to the  
average new vehicle.

G H C

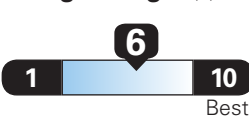
Annual fuel cost  
**\$1,950**

Fuel Economy & Greenhouse Gas Rating (tailpipe only)



This vehicle emits 489 grams CO<sub>2</sub> per mile. The best emits 0 grams per mile (tailpipe only). Producing and distributing fuel also create emissions; learn more at [fuel economy.gov](http://fuel economy.gov).

Smog Rating (tailpipe only)



Actual results will vary for many reasons, including driving conditions and how you drive and maintain your vehicle. The average new vehicle gets 27 MPG and costs \$6,500 to fuel over 5 years. Cost estimates are based on 15,000 miles per year at \$2.35 per gallon. MPGe is miles per gasoline gallon equivalent. Vehicle emissions are a significant cause of climate change and smog.

**fuel economy.gov**

Calculate personalized estimates and compare vehicles



Smartphone  
QR Code™



GOVERNMENT 5-STAR SAFETY RATINGS

Overall Vehicle Score

★★★★★

Based on the combined ratings of frontal, side and rollover.  
Should ONLY be compared to other vehicles of similar size and weight.

Frontal  
Crash

Driver  
Passenger

★★★★★

Based on the risk of injury in a frontal impact.  
Should ONLY be compared to other vehicles of similar size and weight.

Side  
Crash

Front seat  
Rear seat

★★★★★

Based on the risk of injury in a side impact.

Rollover

★★★★

Based on the risk of rollover in a single-vehicle crash.

Star ratings range from 1 to 5 stars (★★★★★) with 5 being the highest.  
Source: National Highway Traffic Safety Administration (NHTSA)  
[www.safercar.gov](http://www.safercar.gov) or 1-888-327-4236

PARTS CONTENT INFORMATION

FOR VEHICLES IN THIS CARLINE:

U.S./CANADIAN PARTS CONTENT: 42%

MAJOR SOURCES OF FOREIGN PARTS  
CONTENT: MEXICO 44%

NOTE: PARTS CONTENT DOES NOT INCLUDE FINAL  
ASSEMBLY, DISTRIBUTION, OR OTHER NON-PARTS COSTS.

FOR THIS VEHICLE:

FINAL ASSEMBLY POINT:

ROANOKE, IN U.S.A.

COUNTRY OF ORIGIN:

ENGINE: UNITED STATES

TRANSMISSION: UNITED STATES

This label has been applied pursuant to Federal law – Do not remove prior to delivery to the ultimate purchaser. \*Includes Manufacturer's Recommended Pre-Delivery Service. Does not include dealer installed options and accessories not listed above, local taxes or license fees.

© 2009 General Motors LLC  
GMLBL\_PROD\_0041 – 08/19/2022

ORDER NO BVVKX7 SALES CODE E  
SALES MODEL CODE CK10543  
DEALER NO 19288  
FINAL ASSEMBLY:  
ROANOKE, IN U.S.A.

VIN 1GCPDDEK4NZ645077 REISSUE

DEALER TO WHOM DELIVERED  
EMMERT MOTORS  
2175 COLUMBIA BLVD  
SAINT HELENS, OR 97051-1738





## Do You Have Any Questions

1 message

Joe Patnode <jpatnode@sales.bendchevrolet.com>  
To: cronin.riley38@gmail.com

Mon, Nov 21, 2022 at 3:56 PM

345 NE 3RD STREET BEND OR 97701

SALES: (541) 205-0716 | SERVICE: (541) 693-5105



Riley,

I just wanted to drop you a quick line and find out if there are any questions that I can answer for you concerning the 2022 Chevrolet Silverado 1500 you inquired about? Are you a Costco Member? If so, I can get a discount.

Please let me know. I am happy to help!

Sincerely,

Joe Patnode Internet Sales Manager  
Cell: (541) 668-0623 Fax (541) 388-4782

### Requested Vehicle Information for 2022 Chevrolet Silverado 1500 LT

Wheels: 20" x 9" Painted Aluminum, Protection Package, All-Weather Floor Liner (LPO), Tires: 275/60R20SL AT BW, Turbocharged Gas I4 2.7L/166, automatic, 5 miles, Summit White, stock # NZ607589, new...

[More Details](#)

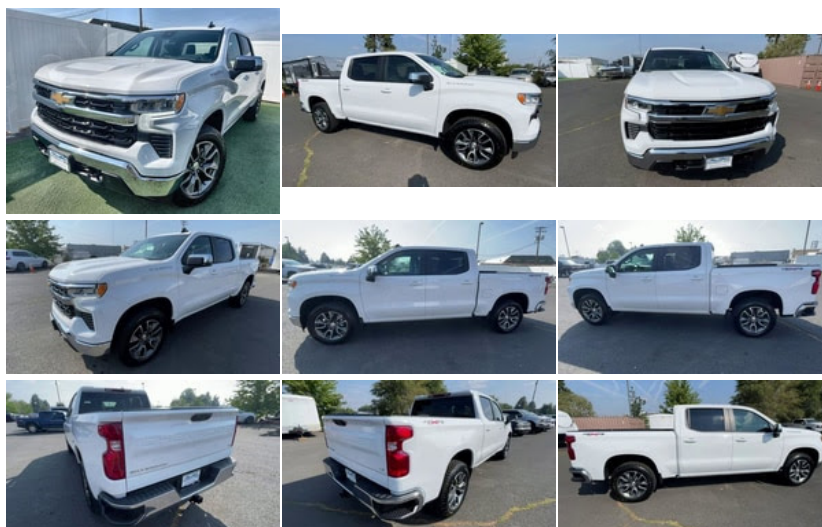
\$54,035  
Discount \$2,000  
Price \$52,035



### Comments

Heated Seats, Dual Zone A/C, Satellite Radio, Back-Up Camera, Rear Air, 4x4, Turbo Charged, Trailer Hitch, WHEELS, 20" X 9" (50.8 CM X 22.9 CM) PAINTED ALUMINUM, PROTECTION PACKAGE, LPO, ALL-WEATHER FLOOR LINERS, WHEELS, 20" X 9" (50.8 CM X 22.9 CM).. TRANSMISSION, 8-SPEED AUTOMATIC, ELEC... ENGINE, 2.7L TURBO HIGH-OUTPUT, AUDIO SYSTEM, CHEVROLET INFOTAINMENT.. REMOTE START PACKAGE, Bed Liner. LT trim, SUMMIT WHITE exterior and JET BLACK interior. FUEL EFFICIENT 20 MPG Hwy/17 MPG City! Warranty 5 yrs/60k Miles - Drivetrain Warranty; READ MORE! KEY FEATURES INCLUDE 4x4, Rear Air, Heated Driver Seat, Back-Up Camera, Satellite Radio, Trailer Hitch, Dual Zone A/C, WiFi Hotspot, Lane Keeping Assist. Heated Seats Onboard Communications System, Privacy Glass, Keyless Entry OPTION PACKAGES WHEELS, 20" X 9" (50.8 CM X 22.9 CM) PAINTED ALUMINUM with machine face and Grazen Painted pockets, PROTECTION PACKAGE includes (B1J) wheel house liners and (CGN) Chevytec spray-on bedliner, LPO, ALL-WEATHER FLOOR LINERS 1st and 2nd rows on Crew Cab and Double Cab, (includes Chevrolet Bowtie logo), REMOTE START PACKAGE includes (BTV) Remote Start, (UTJ) content theft alarm and (C49) rear-window defogger, AUDIO SYSTEM, CHEVROLET INFOTAINMENT 3 PREMIUM SYSTEM with Google built-in, 13.4" diagonal HD color touchscreen, includes multi-touch display, AM/FM stereo, Bluetooth streaming audio for music and most phones; featuring wireless Android Auto and Apple CarPlay capability for compatible phones, advanced voice recognition, in-vehicle apps, personalized profiles for infotainment and vehicle settings (STD), ENGINE, 2.7L TURBO HIGH-OUTPUT (310 hp [231 kW] @ 5600 rpm, 430 lb-ft of torque [583 Nm] @ 3000 rpm) (STD), TRANSMISSION, 8-SPEED AUTOMATIC Plus license and title, and \$150 title and registration processing fee. Price does not include a charge for 0.40% Oregon Corporate Activity Tax. A 0.5% state sales tax will be added to new vehicle sales Not all sales at MSRP.

### Vehicle Photos





## Options

### Technical

- Alternator, 220 amps (Included and only available with (L3B) 2.7L Turbo engine, (LM2) Duramax 3.0L Turbo-Diesel I6 engine, (VYU) Snow Plow Prep Package or (NHT) Max Trailering Package.)
- Auto-locking rear differential
- Automatic Stop/Start
- Battery, heavy-duty 730 cold-cranking amps/80 Amp-hr, maintenance-free with rundown protection and retained accessory power
- Brake lining wear indicator
- Brakes, 4-wheel antilock, 4-wheel disc with DURALIFE rotors
- Capless Fuel Fill
- Durabed, pickup bed
- Engine, 2.7L Turbo High-Output (310 hp [231 kW] @ 5600 rpm, 430 lb-ft of torque [583 Nm] @ 3000 rpm) (Not available with (Z71) 271 Off-Road Package.)
- Exhaust, single outlet
- Four wheel drive
- Frame, fully-boxed, hydroformed front section
- GVWR, 7000 lbs. (3175 kg) (Requires Crew Cab or Double Cab 4WD model and (L3B) 2.7L Turbo engine.)
- Push Button Start
- Rear axle, 3.42 ratio (Included with (L3B) 2.7L Turbo engine or (L84) 5.3L EcoTec3 V8 engine and (NHT) Max Trailering Package.)
- Steering, Electric Power Steering (EPS) assist, rack-and-pinion
- Suspension Package, Standard
- Transfer case, single speed electronic Autotrac with push button control (4WD models only)

### Exterior

- Bumper, front chrome
- Bumper, rear chrome
- Cargo tie downs (12), fixed rated at 500 lbs per corner
- CornerStep, rear bumper
- Door handles, body-color
- Glass, deep-tinted
- Headlamps, LED reflector with LED signature Daytime Running Lamps and Amber tracer animation
- Hood Insulator
- IntelliBeam, automatic high beam on/off
- Lamps, cargo area, cab mounted integrated with center high mount stop lamp, with switch in bank on left side of steering wheel (incandescent on Regular Cab models, LED on Crew Cab and Double Cab models)
- LED Cargo Area Lighting located in pickup bed, activated with switch on

- Transmission, 8-speed automatic, electronically controlled with overdrive and tow/haul mode. Includes Cruise Grade Braking and Powertrain Grade Braking (Included and only available with (L3B) 2.7L Turbo engine.)

#### **Safety**

- Airbags, dual-stage frontal airbags for driver and front outboard passenger; Seat-mounted side-impact airbags for driver and front outboard passenger; Head-curtain airbags for front and rear outboard seating positions; Includes front outboard Passenger Sensing System for frontal outboard passenger airbag (Always use seat belts and child restraints. Children are safer when properly secured in a rear seat in the appropriate child restraint. See the Owner's Manual for more information.)
- Automatic Emergency Braking
- Buckle to Drive prevents vehicle from being shifted out of Park until driver seat belt is fastened; times out after 20 seconds and encourages seat belt use, can be turned on and off in Settings menu
- Daytime Running Lamps with automatic exterior lamp control
- Following Distance Indicator
- Forward Collision Alert
- Front Pedestrian Braking
- HD Rear Vision Camera
- Hitch Guidance dynamic single line to aid in trailer alignment for hitching (Deleted when (RG5) (Z82) Fleet LT Trailing Package Delete is ordered.)
- Lane Keep Assist with Lane Departure Warning
- OnStar and Chevrolet connected services capable (Terms and limitations apply. See [onstar.com](https://onstar.com) or dealer for details.)
- StabiliTrak, stability control system with Proactive Roll Avoidance and traction control, includes electronic trailer sway control and hill start assist
- Teen Driver a configurable feature that lets you activate customizable vehicle settings associated with a key fob, to help encourage safe driving behavior. It can limit certain available vehicle features, and it prevents certain safety systems from being turned off. An in-vehicle report card gives you information on driving habits and helps you to continue to coach your new driver
- Tire Pressure Monitoring System, auto learn includes Tire Fill Alert (does not apply to spare tire)

#### **Other**

- AUDIO SYSTEM, CHEVROLET INFOTAINMENT 3 PREMIUM SYSTEM with Google built-in, 13.4" diagonal HD color touchscreen, includes multi-touch display, AM/FM stereo, Bluetooth streaming audio for music and most phones; featuring wireless Android Auto and Apple CarPlay capability for compatible phones, advanced voice recognition, in-vehicle apps, personalized profiles for infotainment and vehicle settings (STD)
- CHEVYTEC SPRAY-ON BEDLINER, BLACK WITH CHEVROLET LOGO (does not include spray-on liner on tailgate due to Black composite inner panel)
- DEFOGGER, REAR-WINDOW ELECTRIC
- ENGINE, 2.7L TURBO HIGH-OUTPUT (310 hp [231 kW] @ 5600 rpm, 430 lb-ft of torque [583 Nm] @ 3000 rpm) (STD)
- GVWR, 7000 LBS. (3175 KG) (STD)
- JET BLACK, CLOTH SEAT TRIM
- LICENSE PLATE KIT, FRONT
- LPO, ALL-WEATHER FLOOR LINERS 1st and 2nd rows on Crew Cab and Double Cab, (includes Chevrolet Bowtie logo).
- LPO, BLACK BOWTIE EMBLEM, FRONT (dealer-installed) When ordered with (QK2) Multi-Flex tailgate, will include Black tailgate bowtie.)
- LT PREFERRED EQUIPMENT GROUP includes Standard Equipment
- NOT EQUIPPED WITH STEERING COLUMN LOCK, SEE DEALER FOR DETAILS (Certain vehicles built on or after 4-4-2022 will be forced to include (R7N) Not Equipped with Steering Column Lock, which removes Steering Column Lock.)
- PROTECTION PACKAGE includes (B1J) wheel house liners and (CGN) Chevytec spray-on bedliner
- REAR AXLE, 3.42 RATIO
- REMOTE START PACKAGE includes (BTV) Remote Start, (UTJ) content theft alarm and (C49) rear-window defogger
- REMOTE VEHICLE STARTER SYSTEM
- SEATS, FRONT 40/20/40 SPLIT-BENCH with covered armrest storage and under-seat storage (lockable) (STD)
- SUMMIT WHITE
- SUSPENSION PACKAGE, HIGH CAPACITY
- THEFT-DETERRENT SYSTEM, UNAUTHORIZED ENTRY
- TIRE, SPARE 255/80R17SL ALL-SEASON, BLACKWALL
- TIRES, 275/60R20SL ALL-TERRAIN, BLACKWALL (Includes (QAQ) spare tire.)
- TRANSMISSION, 8-SPEED AUTOMATIC, ELECTRONICALLY CONTROLLED with overdrive and tow/haul mode. Includes Cruise Grade Braking and Powertrain Grade Braking (STD)
- WHEELHOUSE LINERS, REAR Certain vehicles built prior to 3-21-2022 and after 4-7-2022 will include rear wheelhouse liners. Certain vehicles built on 3-21-2022 thru 4-7-2022 will be forced to include (RFZ) Not Equipped with Rear Wheelhouse liners, which

center switch bank or key fob (Deleted when (RG4) Fleet LT Base Content Package Delete is ordered.)

- Mirror caps, chrome (Not available with (DPO) trailering mirrors.)
- Mirrors, outside heated power-adjustable (When (PQB) Safety Package is ordered, includes (U12) Perimeter Lighting.)
- Recovery hooks, front, frame-mounted, black (Included with 4WD models only.)
- Tailgate and bed rail protection cap, top
- Tailgate, gate function manual with EZ Lift includes power lock and release
- Tailgate, standard
- Taillamps with incandescent tail, stop and reverse lights
- Tire carrier lock, keyed cylinder lock that utilizes same key as ignition and door
- Tire, spare 255/70R17 all-season, blackwall (Included with (QBN) 255/70R17 all-season, blackwall tires.)
- Tires, 255/70R17 all-season, blackwall
- Wheel, 17" x 8" (43.2 cm x 20.3 cm) full-size, aluminum spare
- Wheels, 17" x 8" (43.2 cm x 20.3 cm) Bright Silver painted aluminum



removes Rear Wheelhouse liners. See dealer for details or the window label for the features on a specific vehicle.)

- WHEELS, 20" X 9" (50.8 CM X 22.9 CM) PAINTED ALUMINUM with machine face and Grazen Painted pockets

#### **Interior**

- Air conditioning, dual-zone automatic climate control (Deleted when (RG4) Fleet LT Base Content Package Delete is ordered and replaced with (C67) single-zone manual air conditioning.)
- Air vents, rear, heating/cooling
- Assist handles front A-pillar mounted for driver and passenger, rear B-pillar mounted
- Audio system feature, 6-speaker system
- Audio system, Chevrolet Infotainment 3 Premium system with Google built-in, 13.4" diagonal HD color touchscreen, includes multi-touch display, AM/FM stereo, Bluetooth streaming audio for music and most phones; featuring wireless Android Auto and Apple CarPlay capability for compatible phones, advanced voice recognition, in-vehicle apps, personalized profiles for infotainment and vehicle settings
- Bluetooth for phone, connectivity to vehicle infotainment system
- Chevrolet Connected Access capable (Subject to terms. See [onstar.com](https://onstar.com) or dealer for details.)
- Compass located in instrument cluster
- Cruise control, electronic with set and resume speed, steering wheel-mounted
- Defogger, rear-window electric
- Door locks, power
- Driver Information Center, enhanced, 12.3" diagonal reconfigurable multicolor digital display
- Exterior Temperature Display located in radio display
- Floor covering, color-keyed carpeting
- Floor mats, rubberized vinyl, front (Deleted when (BKF) Floor liners or LPO floor liners are ordered.)
- Floor mats, rubberized-vinyl rear (Deleted when (BKF) Floor liners or LPO floor liners are ordered.)
- Keyless Open and Start (Deleted when (RG4) Fleet LT Base Content Package Delete is ordered.)
- Mirror, inside rearview, manual tilt
- Power outlet, bed mounted, 120-volt (400 watts shared with (KI4) instrument panel mounted power outlet) (Deleted when (RG4) Fleet LT Base Content Package Delete is ordered.)
- Power outlet, instrument panel, 120-volt (400 watts shared with (KC9) bed mounted power outlet) (Deleted when (RG4) Fleet LT Base Content Package Delete is ordered.)
- Rear Seat Reminder
- Remote Start Package includes (BTV) Remote Start, (UTJ) content theft alarm and (C49) rear-window defogger (Included with (PCL) Convenience Package.) (Included with (PCL) Convenience Package. Available as a free flow when (RG4) Fleet LT Base Content Package Delete is ordered.)
- Remote vehicle starter system
- Seat adjuster, driver 10-way power including lumbar (Deleted when (RG4) Fleet LT Base Content Package Delete is ordered.)
- Seat adjuster, passenger 4-way manual
- Seat trim, cloth
- Seat, rear 60/40 folding bench (folds up), 3-passenger (includes child seat top tether anchor)
- Seating, heated driver and front outboard passenger (Vehicles built prior to 3-14-2022 and after 4-24-2022 include heated driver and front outboard passenger seats. Certain vehicles built on or after 3-14-2022 through 4-24-2022 will be forced to include (00V) Not Equipped with Heated or Ventilated Front Seats, which removes heated front seats. See dealer for details or the window label for the features on a specific vehicle. Feature will not function on certain models without later dealer retro)
- Seats, front 40/20/40 split-bench with covered armrest storage and under-seat storage (lockable)
- SiriusXM Radio
- SiriusXM with 360L Equipped with SiriusXM with 360L. Enjoy a trial subscription of the Platinum Plan for the full 360L experience, with a greater variety of SiriusXM content, a more personalized experience and easier navigation. With the Platinum Plan package, you can also enjoy your favorites everywhere you go, with the SiriusXM app, online and at home on compatible connected devices. (IMPORTANT: The SiriusXM radio trial package is not provided on vehicles that are ordered for Fleet Daily Rent)
- Steering column, manual tilt and telescoping (Deleted when (RG4) Fleet LT Base Content Package Delete is ordered.)
- Steering wheel audio controls
- Steering wheel, heated (Certain vehicles built prior to 3-28-2022 may be forced to include (00G) Not Equipped with Heated Steering Wheel, which removes the heated steering wheel. See dealer for details or the window label for the features on a specific vehicle.) (Deleted when (RG4) Fleet LT Base Content Package Delete is ordered. Certain vehicles built prior to 3-28-2022 may be forced to include (00G) Not Equipped with Heated Steering Wheel, which removes the heated steering wheel. See dealer f
- Steering wheel, leather-wrapped (Deleted when (RG4) Fleet LT Base Content Package Delete is ordered.)

- Theft-deterrent system, unauthorized entry
- USB Ports, 2, Charge/Data ports located on instrument panel
- USB ports, rear, dual, charge-only (Deleted when (RG4) Fleet LT Base Content Package Delete is ordered.)
- Wi-Fi Hotspot capable (Terms and limitations apply. See [onstar.com](http://onstar.com) or dealer for details.)
- Window, power front, drivers express up/down
- Window, power front, passenger express down
- Windows, power rear, express down
- Wireless Phone Projection for Apple CarPlay and Android Auto

To ensure e-mail delivery to your inbox, please add my email address to your contacts or safe sender list.

You are receiving this email because you inquired about or purchased a vehicle from Bend Chevrolet recently or in the past. If you prefer not to receive further emails from us, [click here to unsubscribe](#). Alternatively, you can send a written request to the address below. We'll remove you from our list as quickly as possible. This email was sent to [cronin.riley38@gmail.com](mailto:cronin.riley38@gmail.com) on November 21, 2022.

To contact us please visit <http://www.bendchevrolet.com/> or call (541) 382-2911.

This email was delivered to you by:  
Bend Chevrolet  
[345 NE 3rd Street](#)  
[Bend, OR 97701](#)

## Thank you for your request- How can I help?

1 message

**Shane Hagans** <shagans@speedwaychevrolet.motosnap.com>  
To: cronin.riley38@gmail.com

Mon, Nov 21, 2022 at 3:22 PM



16957 West Main St, Monroe, WA 98272 | Chevy: 866-647-1030 | RV: 888-798-9153  
SpeedwayChevrolet.com | RV: SpeedwayRVCenter.com

Hello RILEY,

My name is **Shane Hagans** and I was just passed along your request for information on the **2022 Chevrolet Silverado 1500**.

### Requested Vehicle Information for 2022 Chevrolet Silverado 1500 LT

Protection Package, All-Weather Floor Liner (LPO), Tires: 265/65R18SL AT BW, Turbocharged Gas I4 2.7L/166, automatic, 2 miles, Summit White, stock # 22159, new...

[More Details](#)

\$53,235  
Discount \$3,250  
Price \$49,985



### Comments

Speedway Savings includes: Dealer discount from MSRP. \$1000 - Chevrolet Select Market Bonus Cash. Exp. 11/30/2022 \$500 - Chevrolet Consumer Cash Program. Exp. 11/30/2022 UNLIMITED TIME AND MILEAGE LIFETIME POWER TRAIN WARRANTY INCLUDED WITH THE PURCHASE OF ANY NEW VEHICLE. 8-Speed Automatic, 4WD, Jet Black w/Cloth Seat Trim. Priced below KBB Fair Purchase Price! 2022 Chevrolet Silverado 1500 LT LT1 4WD. Customer Cash Incentives can not be combined with low-APR or leasing Incentives unless otherwise stated. See the dealer for details. Percentage off MSRP is calculated by a variable dealer discount and all variable Chevrolet customer incentives.

### Vehicle Photos











## Options

### Technical

- Alternator, 220 amps (Included and only available with (L3B) 2.7L Turbo engine, (LM2) Duramax 3.0L Turbo-Diesel I6 engine, (VYU) Snow Plow Prep Package or (NHT) Max Trailering Package.)
- Auto-locking rear differential
- Automatic Stop/Start
- Battery, heavy-duty 730 cold-cranking amps/80 Amp-hr, maintenance-free with rundown protection and retained accessory power
- Brake lining wear indicator
- Brakes, 4-wheel antilock, 4-wheel disc with DURALIFE rotors
- Capless Fuel Fill
- Durabed, pickup bed
- Engine, 2.7L Turbo High-Output (310 hp [231 kW] @ 5600 rpm, 430 lb-ft of torque [583 Nm] @ 3000 rpm) (Not available with (Z71) Z71 Off-Road Package.)
- Exhaust, single outlet
- Four wheel drive
- Frame, fully-boxed, hydroformed front section
- GVWR, 7000 lbs. (3175 kg) (Requires Crew Cab or Double Cab 4WD model and (L3B) 2.7L Turbo engine.)
- Push Button Start
- Rear axle, 3.42 ratio (Included with (L3B) 2.7L Turbo engine or (L84) 5.3L EcoTec3 V8 engine and (NHT) Max Trailering Package.)
- Steering, Electric Power Steering (EPS) assist, rack-and-pinion

### Exterior

- Bumper, front chrome
- Bumper, rear chrome
- Cargo tie downs (12), fixed rated at 500 lbs per corner
- CornerStep, rear bumper
- Door handles, body-color
- Glass, deep-tinted
- Headlamps, LED reflector with LED signature Daytime Running Lamps and Amber tracer animation
- Hood Insulator
- IntelliBeam, automatic high beam on/off
- Lamps, cargo area, cab mounted integrated with center high mount stop lamp, with switch in bank on left side of steering wheel (incandescent on Regular Cab models, LED on Crew Cab and Double Cab models)

- Suspension Package, Standard
- Transfer case, single speed electronic Autotrac with push button control (4WD models only)
- Transmission, 8-speed automatic, electronically controlled with overdrive and tow/haul mode. Includes Cruise Grade Braking and Powertrain Grade Braking (Included and only available with (L3B) 2.7L Turbo engine.)

### **Safety**

- Airbags, dual-stage frontal airbags for driver and front outboard passenger; Seat-mounted side-impact airbags for driver and front outboard passenger; Head-curtain airbags for front and rear outboard seating positions; Includes front outboard Passenger Sensing System for frontal outboard passenger airbag (Always use seat belts and child restraints. Children are safer when properly secured in a rear seat in the appropriate child restraint. See the Owner's Manual for more information.)
- Automatic Emergency Braking
- Buckle to Drive prevents vehicle from being shifted out of Park until driver seat belt is fastened; times out after 20 seconds and encourages seat belt use, can be turned on and off in Settings menu
- Daytime Running Lamps with automatic exterior lamp control
- Following Distance Indicator
- Forward Collision Alert
- Front Pedestrian Braking
- HD Rear Vision Camera
- Hitch Guidance dynamic single line to aid in trailer alignment for hitching (Deleted when (RG5) (Z82) Fleet LT Trailering Package Delete is ordered.)
- Lane Keep Assist with Lane Departure Warning
- OnStar and Chevrolet connected services capable (Terms and limitations apply. See [onstar.com](http://onstar.com) or dealer for details.)
- StabiliTrak, stability control system with Proactive Roll Avoidance and traction control, includes electronic trailer sway control and hill start assist
- Teen Driver a configurable feature that lets you activate customizable vehicle settings associated with a key fob, to help encourage safe driving behavior. It can limit certain available vehicle features, and it prevents certain safety systems from being turned off. An in-vehicle report card gives you information on driving habits and helps you to continue to coach your new driver
- Tire Pressure Monitoring System, auto learn includes Tire Fill Alert (does not apply to spare tire)

### **Other**

- AUDIO SYSTEM, CHEVROLET INFOTAINMENT 3 PREMIUM SYSTEM with Google built-in, 13.4" diagonal HD color touchscreen, includes multi-touch display, AM/FM stereo, Bluetooth streaming audio for music and most phones; featuring wireless Android Auto and Apple CarPlay capability for compatible phones, advanced voice recognition, in-vehicle apps, personalized profiles for infotainment and vehicle settings (STD)
- CHEVYTEC SPRAY-ON BEDLINER, BLACK WITH CHEVROLET LOGO (does not include spray-on liner on tailgate due to Black composite inner panel)
- DEFOGGER, REAR-WINDOW ELECTRIC
- ENGINE, 2.7L TURBO HIGH-OUTPUT (310 hp [231 kW] @ 5600 rpm, 430 lb-ft of torque [583 Nm] @ 3000 rpm) (STD)
- GVWR, 7000 LBS. (3175 KG) (STD)
- JET BLACK, CLOTH SEAT TRIM
- LICENSE PLATE KIT, FRONT
- LPO, ALL-WEATHER FLOOR LINERS 1st and 2nd rows on Crew Cab and Double Cab, (includes Chevrolet Bowtie logo),
- LPO, BLACK BOWTIE EMBLEM, FRONT (dealer-installed) When ordered with (QK2) Multi-Flex tailgate, will include Black tailgate bowtie.)

- LED Cargo Area Lighting located in pickup bed, activated with switch on center switch bank or key fob (Deleted when (RG4) Fleet LT Base Content Package Delete is ordered.)
- Mirror caps, chrome (Not available with (DPO) trailering mirrors.)
- Mirrors, outside heated power-adjustable (When (PQB) Safety Package is ordered, includes (U12) Perimeter Lighting.)
- Recovery hooks, front, frame-mounted, black (Included with 4WD models only.)
- Tailgate and bed rail protection cap, top
- Tailgate, gate function manual with EZ Lift includes power lock and release
- Tailgate, standard
- Taillamps with incandescent tail, stop and reverse lights
- Tire carrier lock, keyed cylinder lock that utilizes same key as ignition and door
- Tire, spare 255/70R17 all-season, blackwall (Included with (QBN) 255/70R17 all-season, blackwall tires.)
- Tires, 255/70R17 all-season, blackwall
- Wheel, 17" x 8" (43.2 cm x 20.3 cm) full-size, aluminum spare
- Wheels, 17" x 8" (43.2 cm x 20.3 cm) Bright Silver painted aluminum

- LT PREFERRED EQUIPMENT GROUP includes Standard Equipment
- NOT EQUIPPED WITH STEERING COLUMN LOCK, SEE DEALER FOR DETAILS (Certain vehicles built on or after 4-4-2022 will be forced to include (R7N) Not Equipped with Steering Column Lock, which removes Steering Column Lock.)
- PROTECTION PACKAGE includes (B1J) wheel house liners and (CGN) Chevytec spray-on bedliner
- REAR AXLE, 3.42 RATIO
- REMOTE START PACKAGE includes (BTV) Remote Start, (UTJ) content theft alarm and (C49) rear-window defogger
- REMOTE VEHICLE STARTER SYSTEM
- SEATS, FRONT 40/20/40 SPLIT-BENCH with covered armrest storage and under-seat storage (lockable) (STD)
- SUMMIT WHITE
- THEFT-DETERRENT SYSTEM, UNAUTHORIZED ENTRY
- TIRE, SPARE 265/70R17SL ALL-SEASON, BLACKWALL
- TIRES, 265/65R18SL ALL-TERRAIN, BLACKWALL
- TRANSMISSION, 8-SPEED AUTOMATIC, ELECTRONICALLY CONTROLLED with overdrive and tow/haul mode. Includes Cruise Grade Braking and Powertrain Grade Braking (STD)
- WHEELHOUSE LINERS, REAR Certain vehicles built prior to 3-21-2022 and after 4-7-2022 will include rear wheelhouse liners. Certain vehicles built on 3-21-2022 thru 4-7-2022 will be forced to include (RFZ) Not Equipped with Rear Wheelhouse liners, which removes Rear Wheelhouse liners. See dealer for details or the window label for the features on a specific vehicle.)
- WHEELS, 18" X 8.5" (45.7 CM X 21.6 CM) BRIGHT SILVER PAINTED ALUMINUM

#### **Interior**

- Air conditioning, dual-zone automatic climate control (Deleted when (RG4) Fleet LT Base Content Package Delete is ordered and replaced with (C67) single-zone manual air conditioning.)
- Air vents, rear, heating/cooling
- Assist handles front A-pillar mounted for driver and passenger, rear B-pillar mounted
- Audio system feature, 6-speaker system
- Audio system, Chevrolet Infotainment 3 Premium system with Google built-in, 13.4" diagonal HD color touchscreen, includes multi-touch display, AM/FM stereo, Bluetooth streaming audio for music and most phones; featuring wireless Android Auto and Apple CarPlay capability for compatible phones, advanced voice recognition, in-vehicle apps, personalized profiles for infotainment and vehicle settings
- Bluetooth for phone, connectivity to vehicle infotainment system
- Chevrolet Connected Access capable (Subject to terms. See [onstar.com](https://onstar.com) or dealer for details.)
- Compass located in instrument cluster
- Cruise control, electronic with set and resume speed, steering wheel-mounted
- Defogger, rear-window electric
- Door locks, power
- Driver Information Center, enhanced, 12.3" diagonal reconfigurable multicolor digital display
- Exterior Temperature Display located in radio display
- Floor covering, color-keyed carpeting
- Floor mats, rubberized vinyl, front (Deleted when (BKF) Floor liners or LPO floor liners are ordered.)
- Floor mats, rubberized-vinyl rear (Deleted when (BKF) Floor liners or LPO floor liners are ordered.)
- Keyless Open and Start (Deleted when (RG4) Fleet LT Base Content Package Delete is ordered.)
- Mirror, inside rearview, manual tilt
- Power outlet, bed mounted, 120-volt (400 watts shared with (K14) instrument panel mounted power outlet) (Deleted when (RG4)

- Fleet LT Base Content Package Delete is ordered.)
- Power outlet, instrument panel, 120-volt (400 watts shared with (KC9) bed mounted power outlet) (Deleted when (RG4) Fleet LT Base Content Package Delete is ordered.)
- Rear Seat Reminder
- Remote Start Package includes (BTV) Remote Start, (UTJ) content theft alarm and (C49) rear-window defogger (Included with (PCL) Convenience Package.) (Included with (PCL) Convenience Package. Available as a free flow when (RG4) Fleet LT Base Content Package Delete is ordered.)
- Remote vehicle starter system
- Seat adjuster, driver 10-way power including lumbar (Deleted when (RG4) Fleet LT Base Content Package Delete is ordered.)
- Seat adjuster, passenger 4-way manual
- Seat trim, cloth
- Seat, rear 60/40 folding bench (folds up), 3-passenger (includes child seat top tether anchor)
- Seating, heated driver and front outboard passenger (Vehicles built prior to 3-14-2022 and after 4-24-2022 include heated driver and front outboard passenger seats. Certain vehicles built on or after 3-14-2022 through 4-24-2022 will be forced to include (00V) Not Equipped with Heated or Ventilated Front Seats, which removes heated front seats. See dealer for details or the window label for the features on a specific vehicle. Feature will not function on certain models without later dealer retro
- Seats, front 40/20/40 split-bench with covered armrest storage and under-seat storage (lockable)
- SiriusXM Radio
- SiriusXM with 360L Equipped with SiriusXM with 360L. Enjoy a trial subscription of the Platinum Plan for the full 360L experience, with a greater variety of SiriusXM content, a more personalized experience and easier navigation. With the Platinum Plan package, you can also enjoy your favorites everywhere you go, with the SiriusXM app, online and at home on compatible connected devices. (IMPORTANT: The SiriusXM radio trial package is not provided on vehicles that are ordered for Fleet Daily Rent
- Steering column, manual tilt and telescoping (Deleted when (RG4) Fleet LT Base Content Package Delete is ordered.)
- Steering wheel audio controls
- Steering wheel, heated (Certain vehicles built prior to 3-28-2022 may be forced to include (00G) Not Equipped with Heated Steering Wheel, which removes the heated steering wheel. See dealer for details or the window label for the features on a specific vehicle.) (Deleted when (RG4) Fleet LT Base Content Package Delete is ordered. Certain vehicles built prior to 3-28-2022 may be forced to include (00G) Not Equipped with Heated Steering Wheel, which removes the heated steering wheel. See dealer f
- Steering wheel, leather-wrapped (Deleted when (RG4) Fleet LT Base Content Package Delete is ordered.)
- Theft-deterrent system, unauthorized entry
- USB Ports, 2, Charge/Data ports located on instrument panel
- USB ports, rear, dual, charge-only (Deleted when (RG4) Fleet LT Base Content Package Delete is ordered.)
- Wi-Fi Hotspot capable (Terms and limitations apply. See [onstar.com](http://onstar.com) or dealer for details.)
- Window, power front, drivers express up/down
- Window, power front, passenger express down
- Windows, power rear, express down
- Wireless Phone Projection for Apple CarPlay and Android Auto

This initial email allows you to have my contact information so that if you have any questions regarding this vehicle you have a contact person to speak with who is familiar with it.



My goal is to make sure you have all the information available to you so you can make a strong financial decision. Shopping the Internet has many benefits. However it does not tell you everything you need to know. I would like to earn your business making sure we go through the proper steps to work toward your willingness to visit us here at Speedway Chevrolet.

Please feel free to email me or call me direct so I can answer all your questions. If you would like to schedule at time to come and test drive this vehicle I will have it ready for you up front. *Your time is very important to me.*

Thank you again for the opportunity to assist you on your next purchase.

Sincerely,



**Shane Hagans**  
**Executive Sales & Fleet**

**PLEASE >>> Direct Text or Call**  
**206-390-6475**

**Speedway Chevrolet & RV Center**  
Monroe, Wa

You are receiving this email because you inquired about or purchased a vehicle from Speedway Chevrolet recently or in the past. If you prefer not to receive further emails from us, [click here to unsubscribe](#). Alternatively, you can send a written request to the address below. We'll remove you from our list as quickly as possible.

This email was sent to [cronin.riley38@gmail.com](mailto:cronin.riley38@gmail.com) on November 21, 2022.

To contact us please visit <http://www.speedwaychevrolet.com> or call (360) 794-1155.

This email was delivered to you by:  
Speedway Chevrolet  
16957 West Main Street  
Monroe, WA 98272