

Historic Look at Mill Street Area

Columbia
County Historical Society &
Museum
Association

1916

Columbia River

MAY-1916
ST. HELENS
ORE.

Map Division
Library of Congress

ST. HELENS LUMBER CO'S.
SHIPPING WHARF
LUMBER IN TRANSIT

THE STRAND

COLUMBIA COUNTY COURT HOUSE.

You Are Here

PUBLIC PLAZA

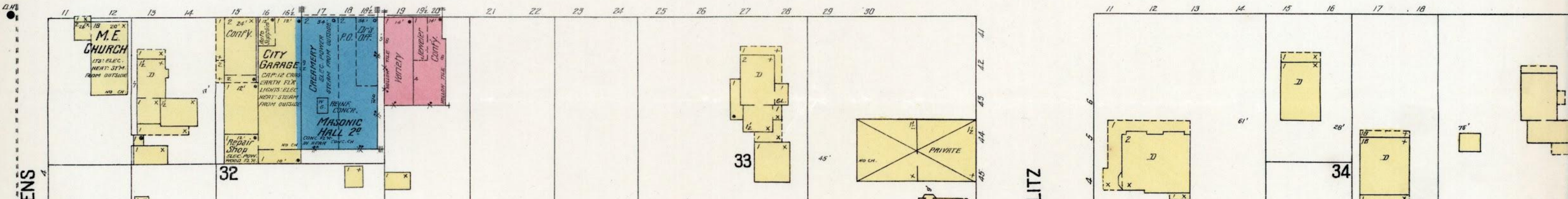
COLUMBIA

MILL

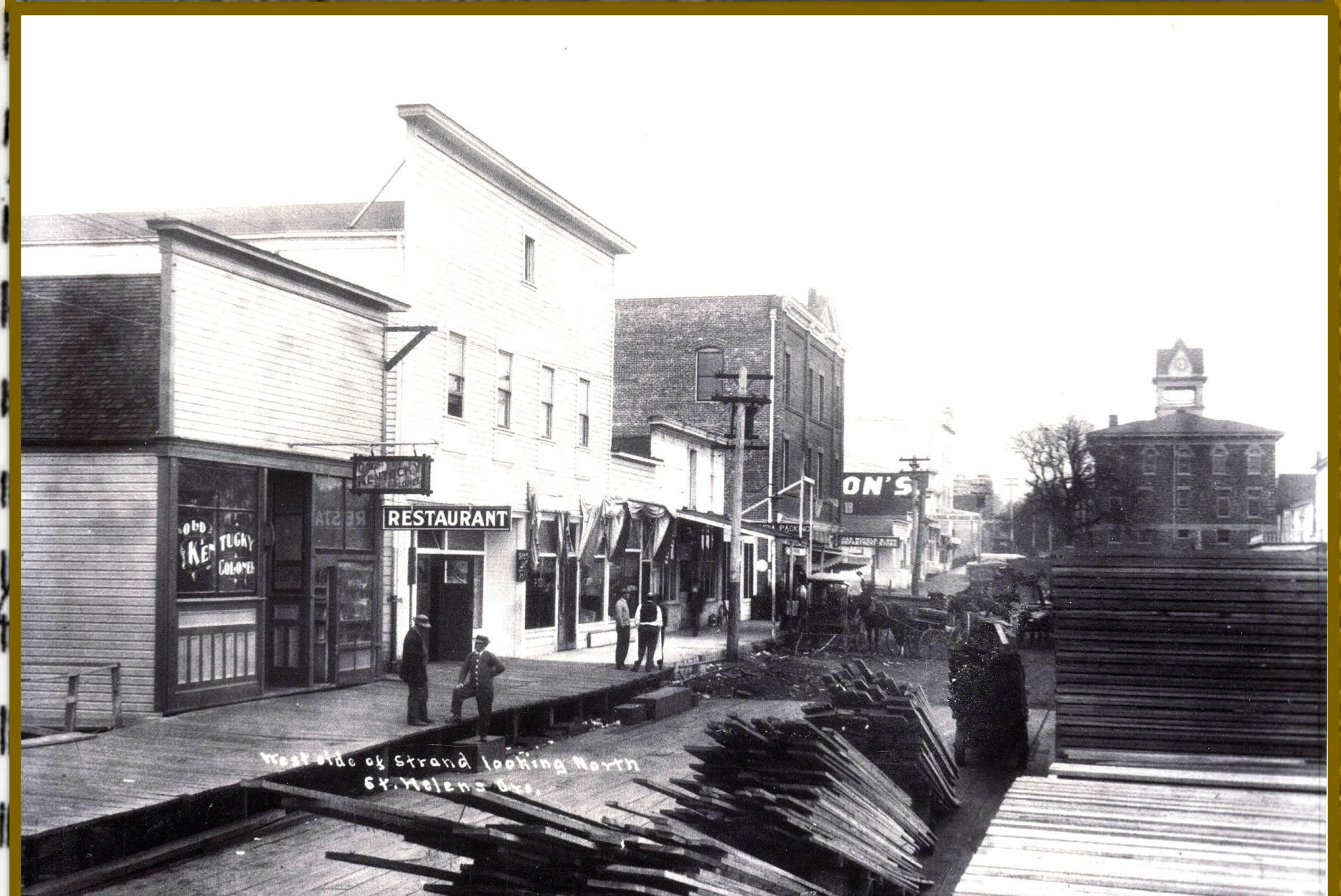
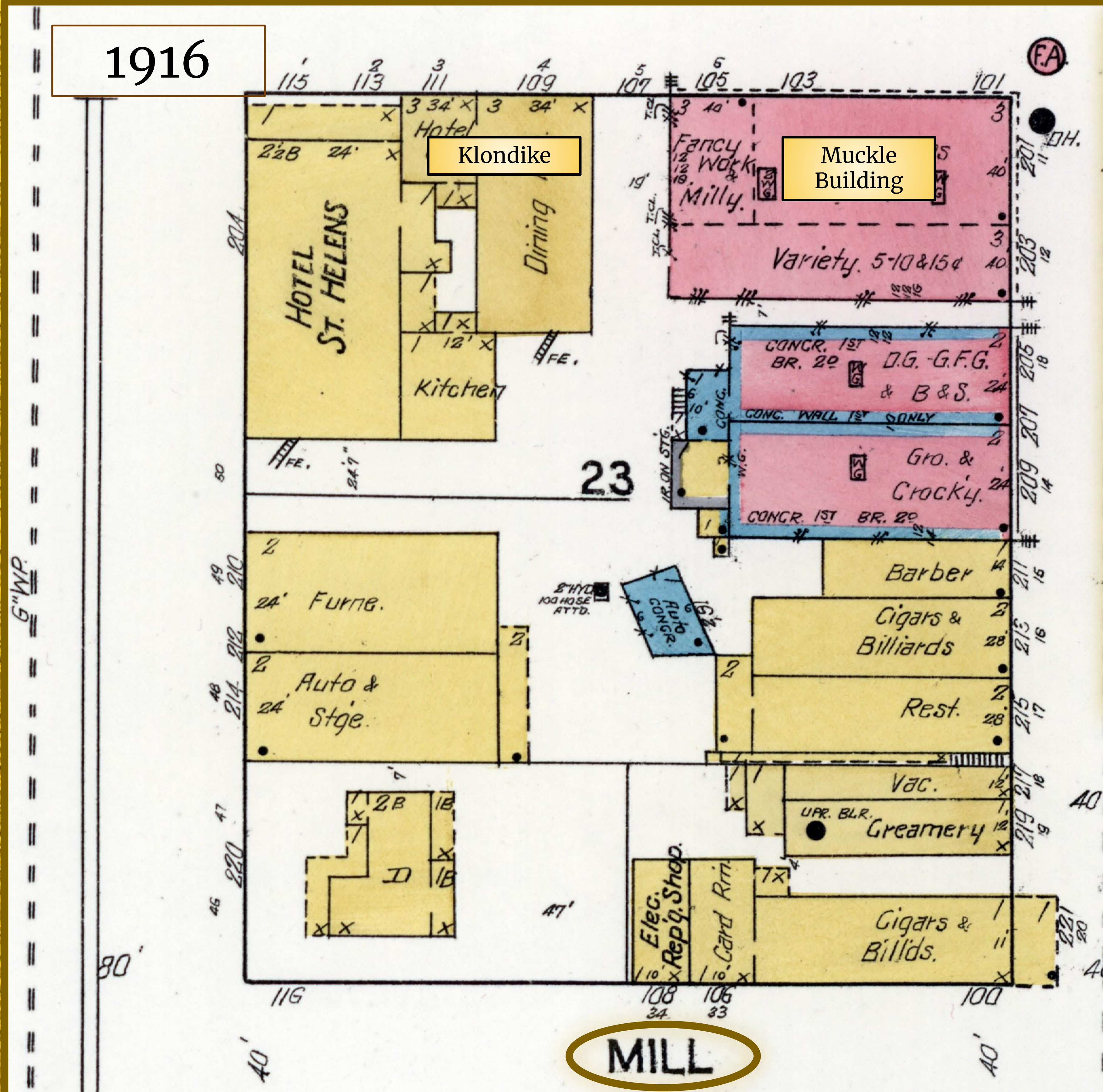
2

4

3



1916



Columbia River

DEC. 1911
ST. HELENS
OREGON

2

1911

ST. HELENS MILL CO.

THE STRAND

ST. HELENS MILL CO'S
SAW MILL.

RUNS DAY ONLY. AVERAGE STOCK 300000. CAP'Y. 125000. NIGHT WATCH
MAN. CLOCK. 12 STATIONS. HOURLY HOURS. POWER-STEAM. FUEL-REFUSE
LTS.-ELEC. I.E.P. LTS. SUPPLIED TO TOWN. HYD. & HOSE AS SHOWN. AUTO-
MATIC SPRINKLERS IN BUILDINGS SO DESIGNATED. MANUFACTURER'S
DRY SYSTEM, 1200 HEADS SPACED ABOUT 7'X3'. PRIMARY SUPPLY
DIRECT FROM FAIRBANKS-MORSE DUPLEX ST. PUMP 20"X16" (CAP'Y.
1500 GALS. PER MIN.) WHICH IS LOCATED IN POWER HO. & DRAWS FROM
RIVER. SECONDARY SUPPLY 35000 GAL. TANK EL. 100' ABOVE FLOOR OF
POWER HO. FILLED BY PUMP, ALSO 3" CONNECTION WITH CITY MAINS.

"Mill Street"
moved by
1916

COWLITZ

JALATIN

NO EXPOSURE

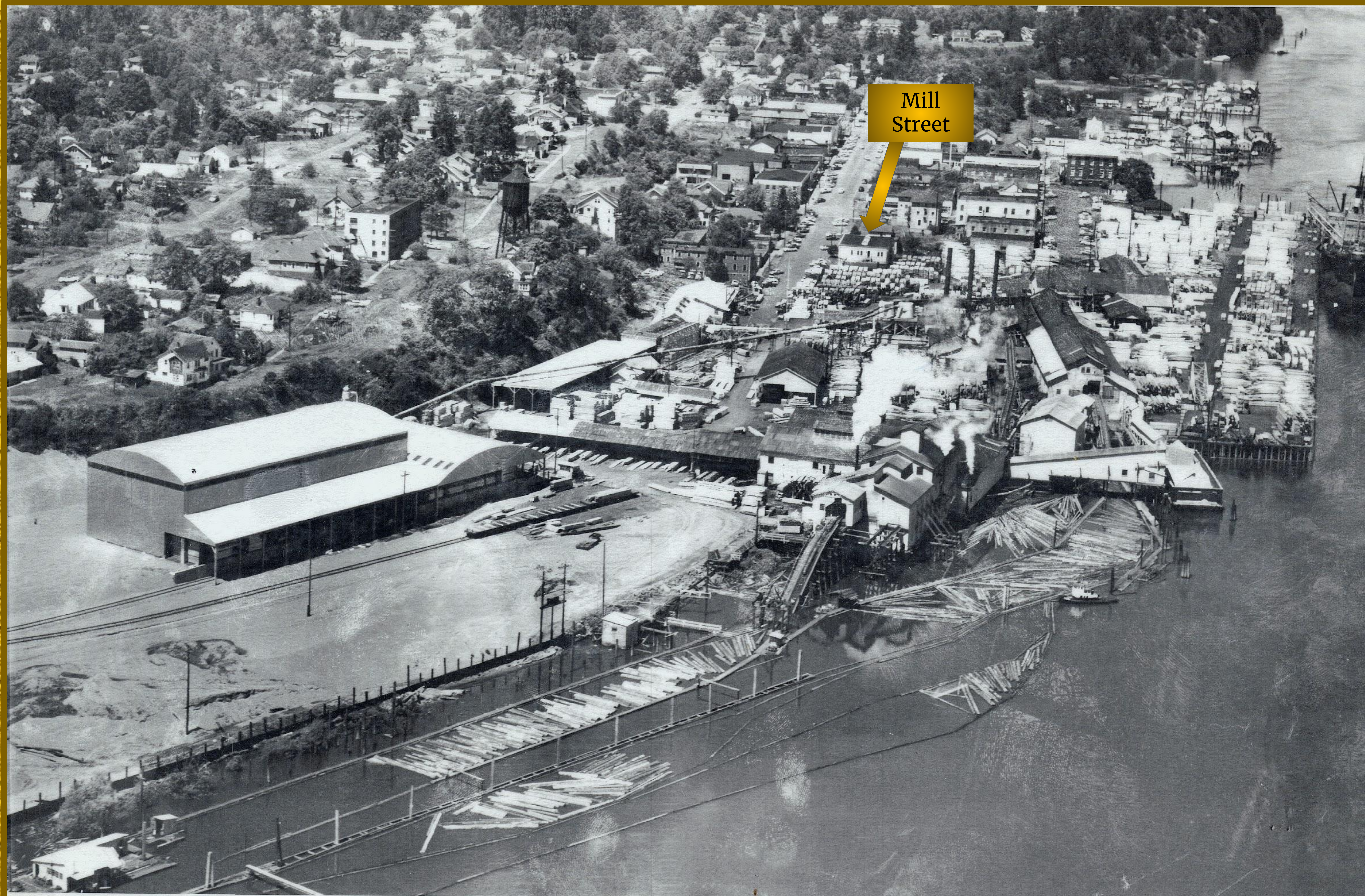


Mill
Street

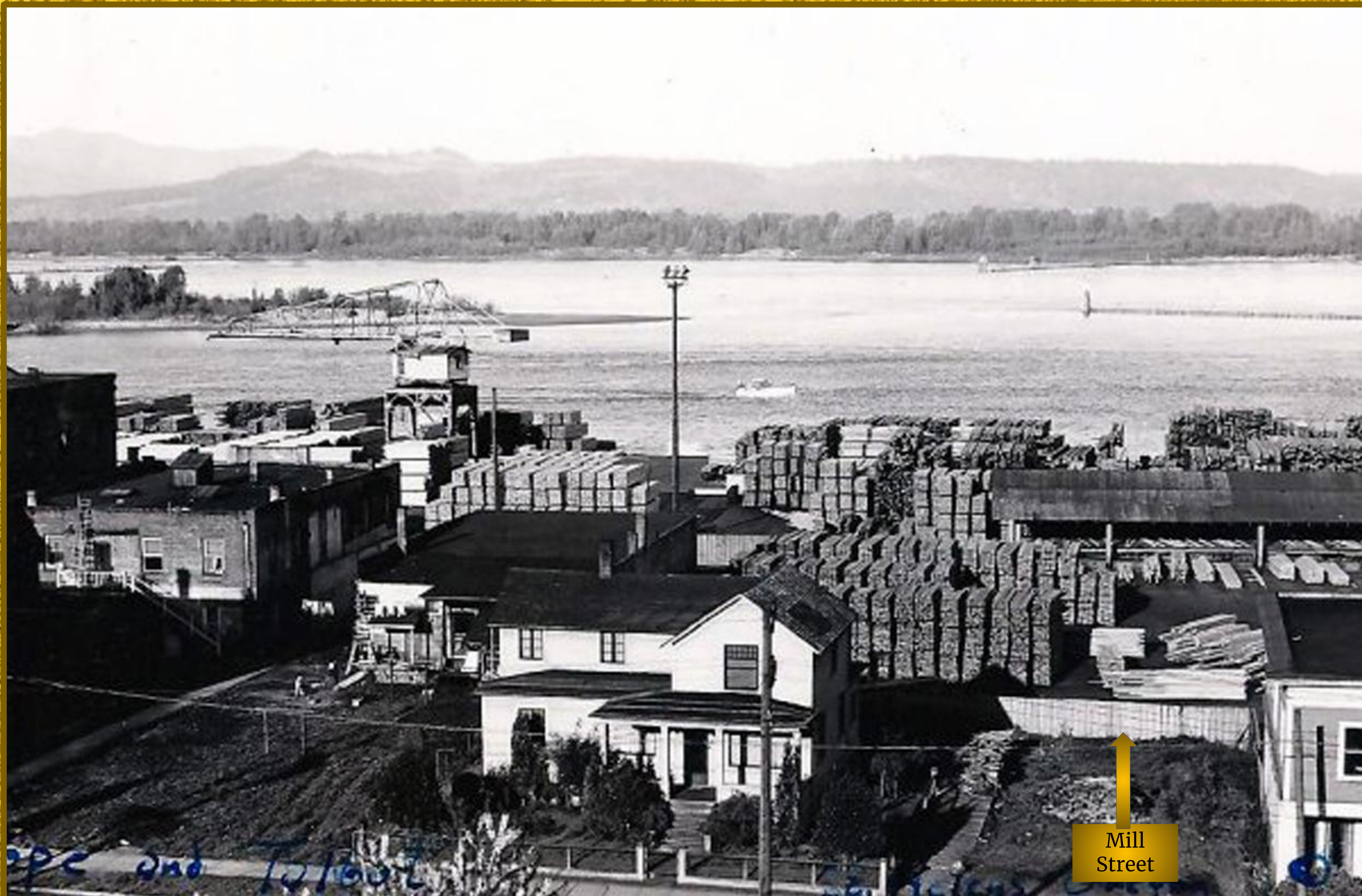
McCormick
Office

Kaleava
Hotel





Mill
Street



Mill
Street



McCormick
Offices

NO 26, OFFICE OF ST. HELENS LUMBER CO, ST. HELENS, OREGON.



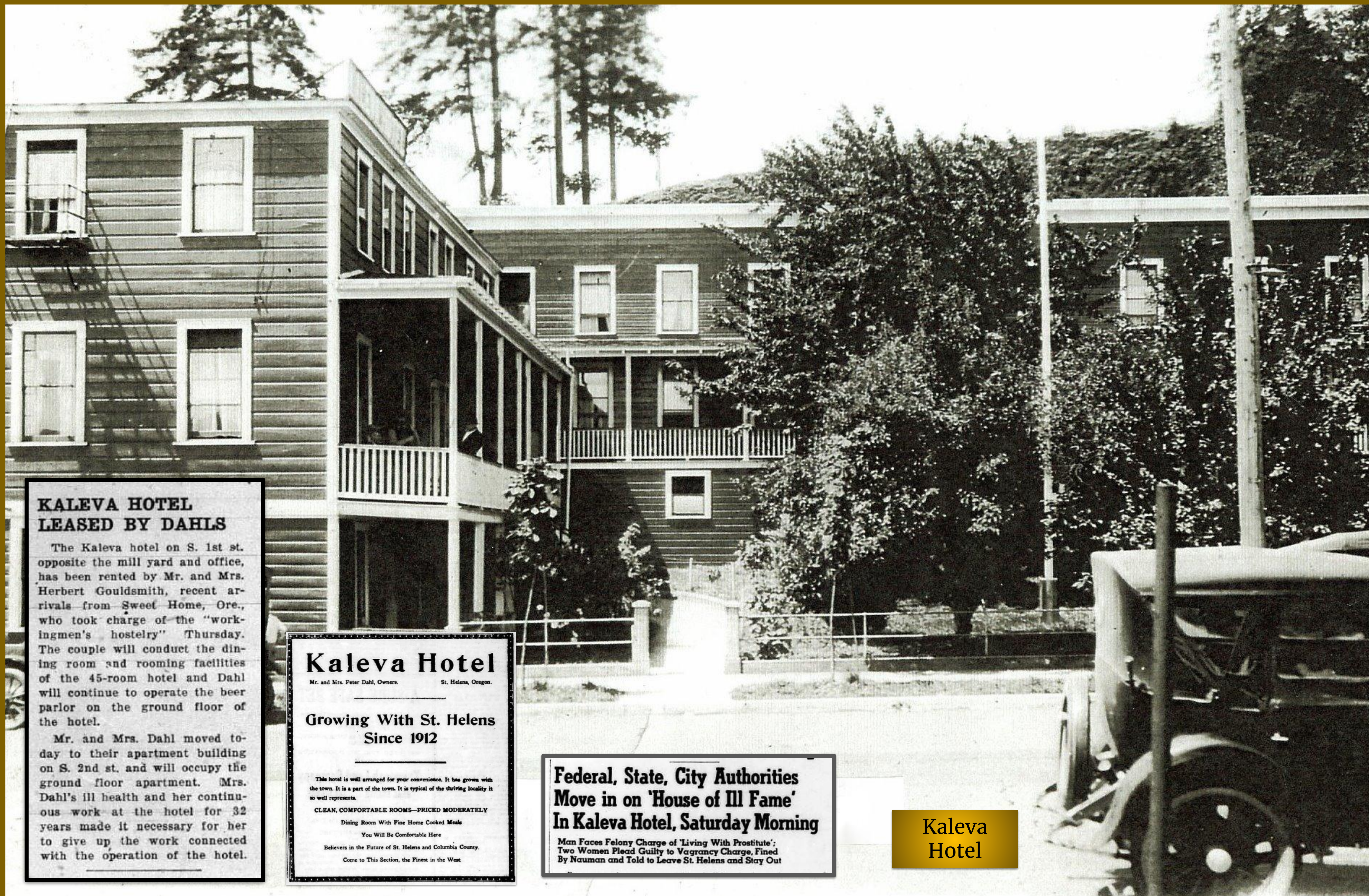
Keel



Laying the
Keel



Nellie
McCormick



KALEVA HOTEL LEASED BY DAHLS

The Kaleva hotel on S. 1st st. opposite the mill yard and office, has been rented by Mr. and Mrs. Herbert Gouldsmith, recent arrivals from Sweet Home, Ore., who took charge of the "workmen's hostelry" Thursday. The couple will conduct the dining room and rooming facilities of the 45-room hotel and Dahl will continue to operate the beer parlor on the ground floor of the hotel.

Mr. and Mrs. Dahl moved today to their apartment building on S. 2nd st. and will occupy the ground floor apartment. Mrs. Dahl's ill health and her continuous work at the hotel for 32 years made it necessary for her to give up the work connected with the operation of the hotel.

Kaleva Hotel

Mr. and Mrs. Peter Dahl, Owners.

St. Helens, Oregon.

Growing With St. Helens Since 1912

This hotel is well arranged for your convenience. It has grown with the town. It is a part of the town. It is typical of the thriving locality it so well represents.

CLEAN, COMFORTABLE ROOMS—PRICED MODERATELY

Dining Room With Fine Home Cooked Meals

You Will Be Comfortable Here

Believers in the Future of St. Helens and Columbia County.

Come to This Section, the Finest in the West

Federal, State, City Authorities Move in on 'House of Ill Fame' In Kaleva Hotel, Saturday Morning

Man Faces Felony Charge of 'Living With Prostitute';
Two Women Plead Guilty to Vagrancy Charge, Fined
By Nauman and Told to Leave St. Helens and Stay Out

Kaleva
Hotel




Elizabeth Isbister

Isbister House



THE ORCADIA HOTEL



ORCADIA HOTEL

ORCADIA HOTEL

This well known hotel, so popular in St. Helens and with numerous transient visitors, is conducted by Thos. Isbister and Mrs. Elizabeth Isbister. Both of these estimable citizens were born in Scotland but came to Oregon years ago. They have been residents of Columbia county for the past sixteen years, and came to St. Helens in 1908, when they took over the hotel. The Orcadia hotel is a comfortable three-story building, having 32 rooms. It is steam heated and electric lighted and offers comfortable quarters to its many guests. The reputation this hotel enjoys for the meals it serves has spread far and near and the Isbisters number many traveling men and other out of town people among their guests. The Orcadia hotel, or Mrs. I's hotel, as it is generally known, is a favorite with all classes, but not any more so than the two estimable people who preside over it and carefully look after the wants of their hundreds of guests.

All Buses Call at Hotel
Courteous Treatment

STOP AT

**ORCADIA
HOTEL**

THOS. ISBISTER, Prop.

Chicken Dinner Sunday, 35c

RATES \$1.00 PER DAY AND UP
Special Rates to Regular Boarders

Historic Name Considerations

Indigenous peoples, pioneer women

Chief Kiesno Way, Wapato Way, Elizabeth Perry Way

Shipbuilding references or names of vessels –

Keel Way, Wapama Way, Celilo Way, Thistle Way

Businesses or people associated with businesses in the area

McCormick Way, Kaleva Way, Isbister Way, George Way

