



City of St. Helens
Department of Public Works – Engineering Division
265 Strand Street, St. Helens, OR 97051
Phone: 503.397.6272 Fax: 503.366.3782

PROJECT S 1st and St Helens Intersection Improvements

PROJECT NO. R-685

CONTRACTOR Moore Excavation Inc.

DATE May 30th, 2025

PROJECT WALK-THROUGH May 29th, 2025

PROJECT PUNCH LIST

I. Concrete and Site Furnishings **See Appendix A for additional concrete crack locations**

- ☐ Edge of concrete and wall to Cross Fit Gym needs to be sealed with grout. Sheet 3A-4.



- ☐ Curb section has a crack in it and needs to be replaced. Sheet 3A-2.



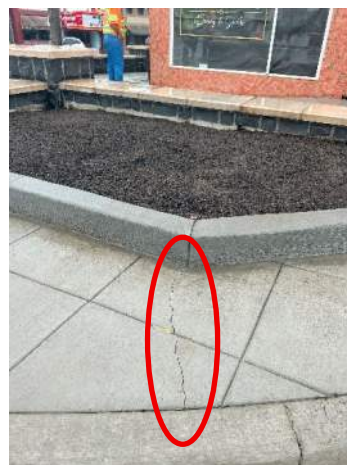
- ❑ Curb section has a crack in it and needs to be replaced. Sheet 3A-3.



- ❑ Chunk of concrete is missing from this sidewalk section. Panel needs to be repaired with grout. Sheet 3A-2



- ❑ Remove and replace concrete panels with crack heading out to curb. Sheet 3A-5.



- ❑ Remove and replace concrete panels with crack at the landing. Sheet 3A-5.



- ❑ Concrete panel needs to be repaired with grout near Tattoo Shop entrance. Sheet 3A-5.



- ❑ Concrete around V-lock needs to be grouted and finished. Sheet 3A-2.



- ❑ Concrete panels with cracks need to be replaced near guywire. Sheet 3A-5.



- ❑ Concrete panels needs to be repaired with grout near Gnome Grown driveway. Sheet 3A-2.



- ❑ Concrete panel needs to be replaced near Gnome Grown driveway. Sheet 3A-2.



- ❑ Concrete panel needs to be replaced near Planter E south column. Sheet L1.01.



- ❑ Concrete panel needs to be repaired with grout on the Northeast Quadrant. Sheet 3A-3.



- ❑ Concrete panels and curb with cracks need to be replaced at Planter A. Sheet 3A-3.



- ❑ Repair damage to precast cap for Planter D and Planter A. Sheet L4.01.



- ❑ Repair damage to precast cap edge for Planter A. Sheet L4.02.



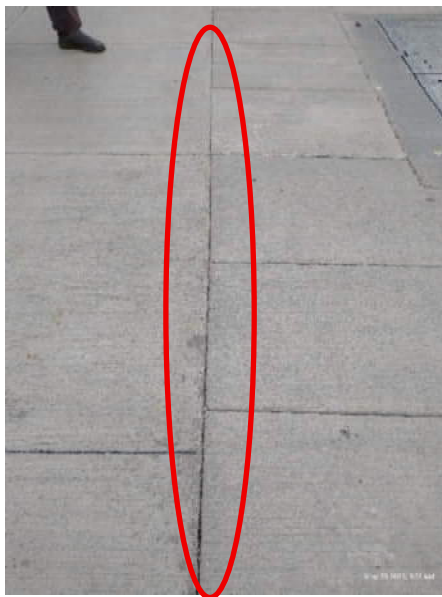
- ❑ Grout concrete damage near the bike racks where the bolts were drilled in. Sheet L1.01.



- ❑ Grout concrete damage near the bench where the bolts were drilled in. Sheet L1.01.



- ❑ Excess concrete between pours has spilled over this joint and along the curb section and needs to be removed and cleaned near the Gnome Grown walkway area. Sheet 3A-2.



- ❑ Concrete panels with cracks need to be replaced. Sheet 3A-3



II. Storm System

- ❑ Swap out sanitary manhole lid for a storm manhole lid with more holes at MH2. Clean up concrete that has spilled onto the lid. Swap storm lid for sewer lid at Keynote 16. Sheet 3.



III. Landscaping and Irrigation

- ❑ Install Hanging Baskets and Irrigation Arms per Sheet L3.01.
- ❑ Test Irrigation controller with Parks Department and ensure controller is operating correctly. Provide O&M manuals to City/Parks Department. Sheet L2.01.
- ❑ Mark or flag the location of buried gateway foundation so it can be easily located in the future without having to tear up all the landscaping (both locations)



IV. Electrical, Lighting, and JUT

- ☐ Install light poles and wayfinding pole at the intersection. Sheet L1.01 and IL-2.



V. Striping and Signage

- ☐ Remove temporary paint marks on the asphalt used for striping layout.



- ☐ Reinstall US30 sign at the Northeast Quadrant. See Sheet SS-1. US30 Sign has been installed, but arrow appears to be missing.



VI. Closeout

- ☐ Substantial Completion: Sign and return attached Exhibit E, Certificate of Substantial Completion.
- ☐ Complete Punch List work within 30 days of the Substantial Completion.
- ☐ After punch list work is done and verified, submit Exhibit F, Certification of Compliance, and Exhibit G, Contractor's Release of Liens and Claims.
- ☐ Submit final invoices and pay requests with or after submittal of Exhibits F and G.
- ☐ Upon verification that all punch work is completed, Exhibit H, Certificate of Final Completion will be issued, final payment will be processed, and the retainage bond will be released.

PRIOR TO WORKING ON OR COMPLETING A PUNCH LIST ITEM, CONTRACTOR SHALL NOTIFY ALEXANDER BIRD, 971.246.2000, SO THAT PUNCH LIST ITEMS CAN BE VERIFIED AND CHECKED OFF.

KITTELSON/GREENWORKS PUNCH LIST ITEMS

SW corner – Low spot that is collecting ~1/2" of water



NW Corner – Communication junction box lid has a lip



a.

All walls/columns – there is excess grout on most stone veneer that needs to be removed.



a.

All walls/columns - the precast caps have inconsistent color. Some are streaked or otherwise inconsistent within the cap, and some have solid color that varies from the others. Examples (not all instances) are shown below.

a. Planter D:



b. Planter A:



c. Planter D:



d. SW corner:



e. Planter C:



All walls/columns – there are discolorations/streaks/smudges on many of the caps which appear to be excess pigment used to color the caps. These discolorations (plus the color variations in item 9) seem to indicate that a surface-applied color stain was used, instead of integral color in the concrete mix as specified in 0596C.17-e. Further, 48 oz. of “dye” was indicated in the precast mix design in Submittal 060.2 (no surface applied stain was submitted). Surface stain would be indicated by a gray interior in the caps broken by light pole installation – ignore surface chips, which may have predated the stain, or been touched up later. If the caps have a surface stain, they should be replaced with integral color caps, or a credit provided to the City for the cost difference. If the caps are not replaced, the discolorations need to be cleaned off. Examples (not all instances) are shown below. [Cracked caps to be replaced per directive issued 8.28.2025](#)

a. Planter C:



b. Planter C:



c. Planter C:



d. Planter C:



e. Planter E:



f. Planter E:



Most walls/columns – there are many chips in the precast caps, that need to be repaired with color-matched mortar. Examples (not all instances) are shown below.

- a. Planter B: [Cracked caps to be replaced per directive issued 8.28.2025](#)



- b. Planter B:



- c. Planter A:



d. Planter D:



e. Planter E:



All walls/columns – the precast caps have sharp, rough as-cast lower edges, instead of the 1/8" bottom chamfer called out in detail 3/L4.00 and 0596C.17-F-1. The chamfer would have prevented much of the chipping seen along the lower edges.



a.

Planter E – the wide grout joint shown below is well outside the specified width range, reference 00596C.44-e.



a.

Reapply anti-graffiti coating after any repairs/cleaning to seat wall caps and stone veneer.

Cracks have developed around this water meter box. Remove and replace concrete panels and install expansion joint around water meter box



S 1st and St Helens SE Quadrant

Joint needs to be cut through to match curb joint. Remove and replace short panel

S 1st and St Helens SE Quadrant

Remove and replace panel and
install expansion joint to
prevent further cracking from
spreading

S 1st and St Helens NE Quadrant

Remove and replace panels
and install expansion joint
around water meter box to
prevent further cracking from
spreading



S 1st and St Helens NE Quadrant



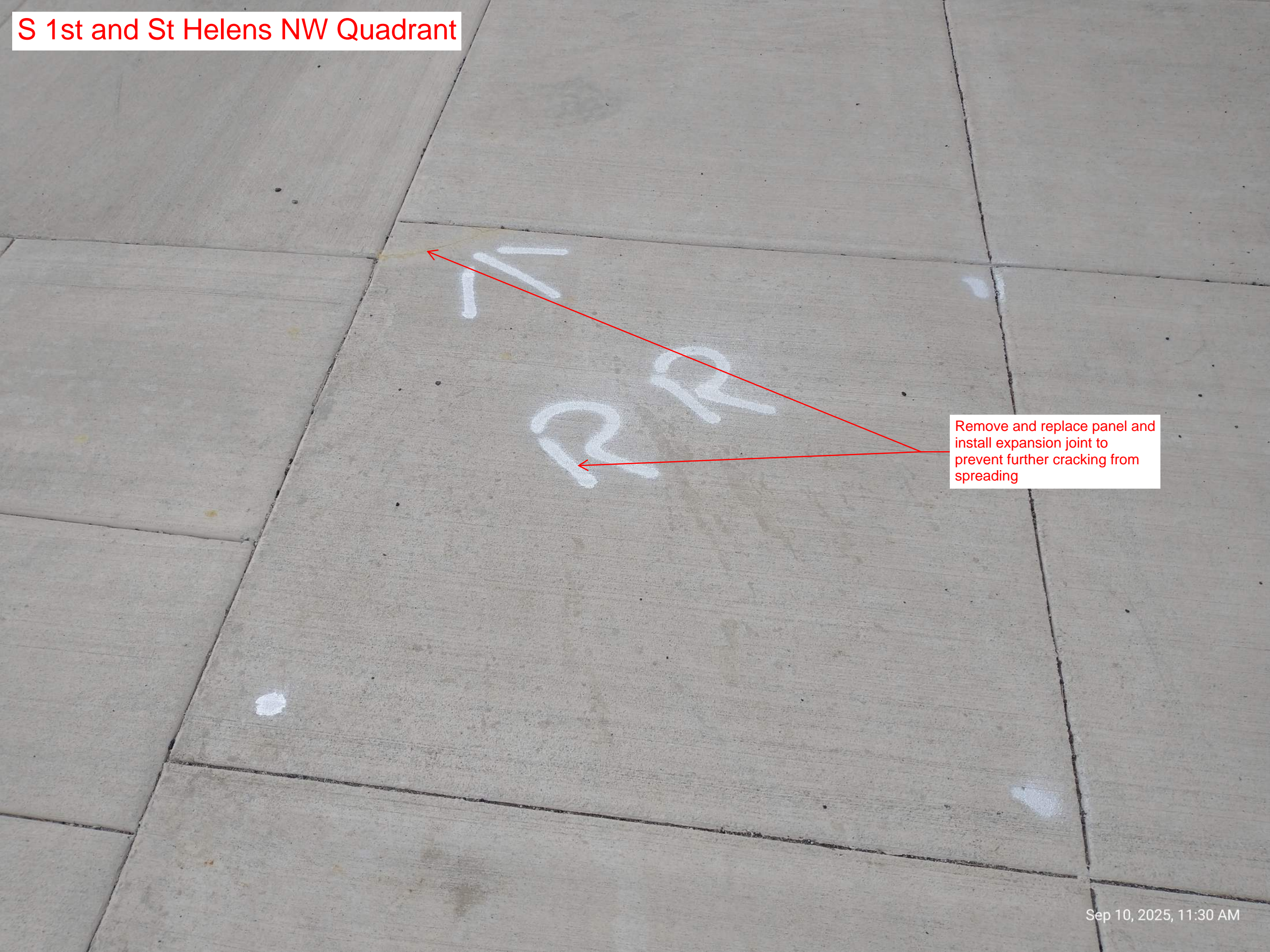
Remove and replace panel and install expansion joint around street lighting box to prevent further cracking from spreading

S 1st and St Helens NE Quadrant

Planter curb has a crack in the middle and needs to be replaced. Additional joints along the curb need to be put in to mitigate future cracking



S 1st and St Helens NW Quadrant



Remove and replace panel and
install expansion joint to
prevent further cracking from
spreading

S 1st and St Helens NW Quadrant



Remove and replace panels and install expansion joint around communication box to prevent further cracking from spreading. Comms box needs to be adjusted to be flush with finished grade

S 1st and St Helens NW Quadrant



Remove and replace panel and install expansion joint around street lighting box to prevent further cracking from spreading

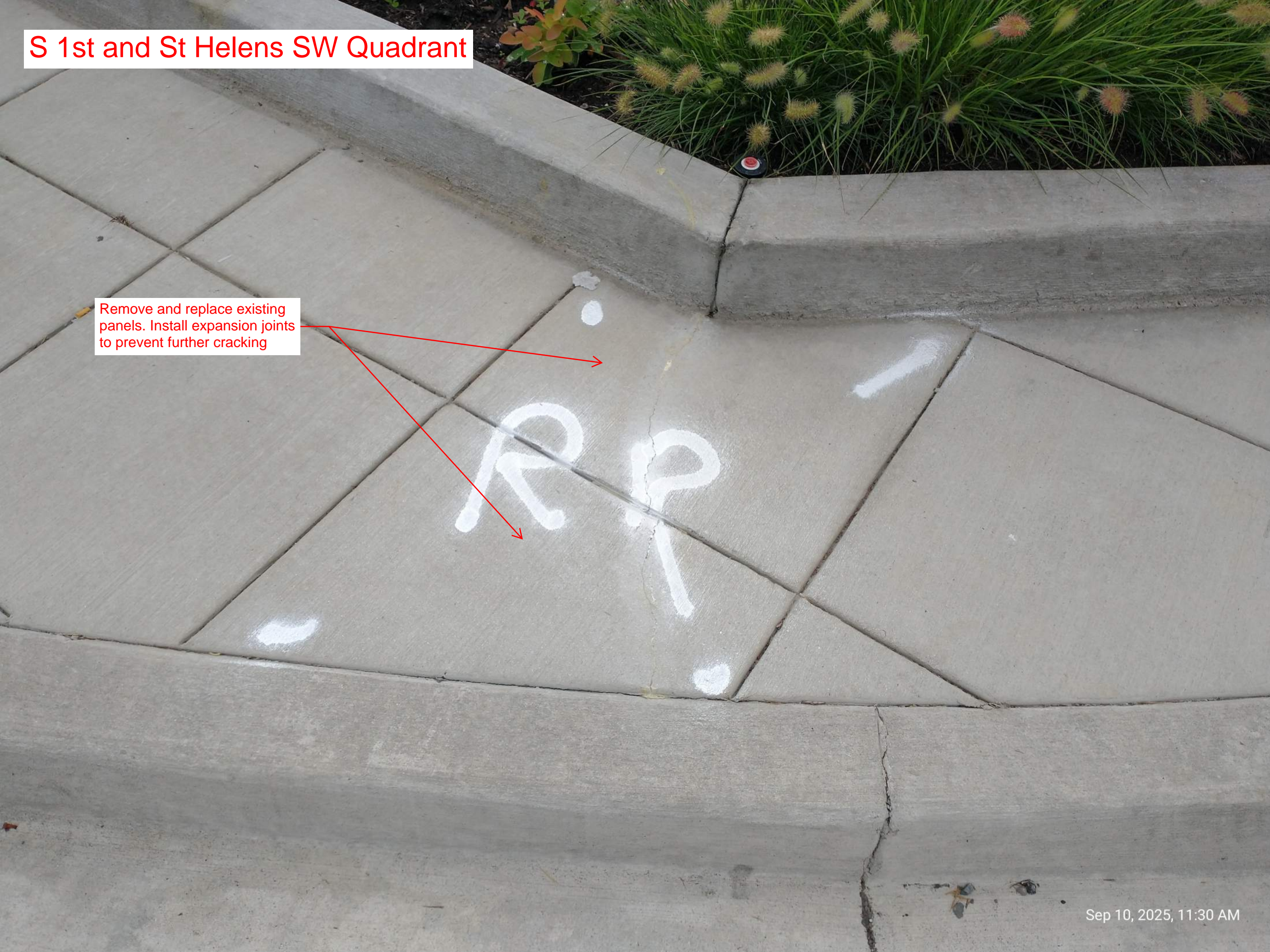
S 1st and St Helens NW Quadrant

Planter curb has a crack in the middle and needs to be replaced. Additional joints along the curb need to be put in to mitigate future cracking

Remove and replace existing panels. Install expansion joints to prevent further cracking

S 1st and St Helens SW Quadrant

Remove and replace existing panels. Install expansion joints to prevent further cracking



S 1st and St Helens SW Quadrant

Remove and replace panel and
install expansion joint around
street lighting box to prevent
further cracking from spreading



S 1st and St Helens SW Quadrant

Replacement work to be done
by Lumen at this location

RRR

RRR

Remove and replace panel and
install expansion joint to
prevent further cracking from
spreading

S 1st and St Helens SW Quadrant

Remove and replace panel and
install expansion joint to
prevent further cracking from
spreading

Replacement work to be done
by Lumen at this location

S 1st and St Helens SW Quadrant

Remove and replace
segment of curb and gutter
that has cracked

S 1st and St Helens SW Quadrant

Pieces of curb need to be
grouted and fixed

Pieces of sidewalk need to be
grouted and fixed