

# City of St Helens

## Milton Creek Watershed

### Annual Forest Management Review

#### February 5, 2025

## 2024 REVIEW & 2025 ACTIVITIES

### 2024 Review

- **‘Section-20’ Timber Sale** (See Map on Page-6)
  - Sold to Interfor on October 29, 2024
    - Contract expires July 31, 2026
  - 88-acres
  - 2.5 million board feet
  - \$1.47 million estimated income
  - \$608.76 per thousand-board-feet Douglas-fir bid price (stumpage)
    - See graph on Page-3 of St Helens Bid History
  
- **Reforestation**
  - ‘Pinkney Road’ Harvest Unit (See Map on Page-6)
    - 83-acres (*60-acre Partial Plant*)
    - 26,500 seedlings
  - ‘Salmon’ Harvest Unit (See Map on Page-6)
    - 69-acres
    - 29,000 seedlings

### 2025 Activities

- **‘Section-20’ Timber Sale**
  - Interfor plans to begin harvest in August
- **Reforestation**
  - ‘Pinkney Road’ Harvest Unit (See Map on Page-6)
    - 83-acres (*23-acre Partial Plant*)
    - 10,000 seedlings
- **Pre-Commercial Thinning**
  - 80-acres (See Map on Page-5)
    - Age 21-years
    - Overstocked: 350+ Trees Per Acre
    - 200-250 Trees Per Acre following thinning
- **Invasive Species Treatment**
  - 69-acres (See Map on Page-5)
    - Targeted herbicide treatment of Scotch Broom

# City of St Helens

## Milton Creek Watershed

### Annual Forest Management Review

#### February 5, 2025

#### 2025 Activities

##### ➤ Finalize Management Plan

- Document management history
- Outline current management policies and guidelines
- Outline management goals and objectives
- Present to City Council at a spring Council meeting

## TIMBER MARKET ANALYSIS

### Current Sawlog Market

#### Current Prices

In January 2025, *small Douglas-fir saw log* (5 to 15-inch diameter) delivered prices in the local area range from **\$650-\$800** per MBF. This price range is the same as this time last year.

#### Current Trend

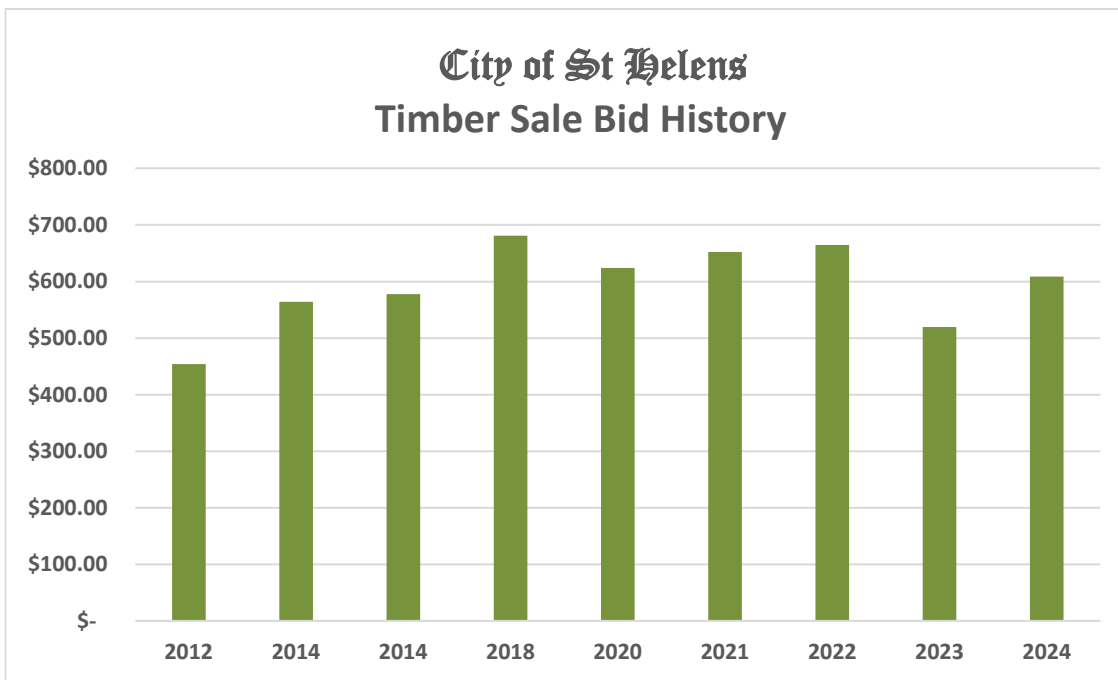
Log prices have gradually climbed back up toward the five-year average since bottoming out at the end of last summer. There is a limited supply of logs, which props prices up, even in a basic housing market and a tough overall economy. Mills interested in St Helens timber mostly produce dimension lumber (2x4, 2x6, etc) that is widely used in the construction industry and driven by the housing market.

It is important to understand log supply challenges in the Pacific Northwest when looking at future log markets. As a net importer of lumber, the United States is not getting the supply from Canada it has historically, so there is more pressure on domestic producers to fill this gap. Billions of board feet of timber were lost in the Labor Day fires of 2020 and most of the salvageable logs have been processed. In 2024, additional harvest regulations were imposed on Oregon forests, further reducing the amount of timberland available for harvest. All that being said, with a limited supply of logs available, prices should remain solid even in a lumber economy that features basic demands.

The current inventory of City of St Helens timber features mostly small Douglas-fir saw logs. In the current market, Douglas-fir stumpage prices for City of St Helens timber would range from **\$400-\$550** per MBF.

# City of St Helens Milton Creek Watershed Annual Forest Management Review February 5, 2025

*Timber Sale Bid History of City of St Helens Stumpage Sales (\$ per MBF for Douglas-fir)*



## MANAGEMENT PLANNING

### Recent Harvest History

#### 2018-2023

After a four-year break following the harvest of the majority of the remaining merchantable timber in 2014; from 2018-2023 we harvested 362-acres from five timber sales – an average of 60-acres per year. This is over our sustainable goal of 50-acres per year (based on a 45-year rotation in which 1/45<sup>th</sup> of the available forestland is harvested annually), but the harvest level is a rolling average over time, and considerable added value has been captured during this period by harvesting at historic peaks in the log market.

#### 2025

The 'Section-20' timber sale was sold in October of 2024. This sale is 88-acres with a volume of 2.5-million board feet. Harvest will occur in 2025-2026.

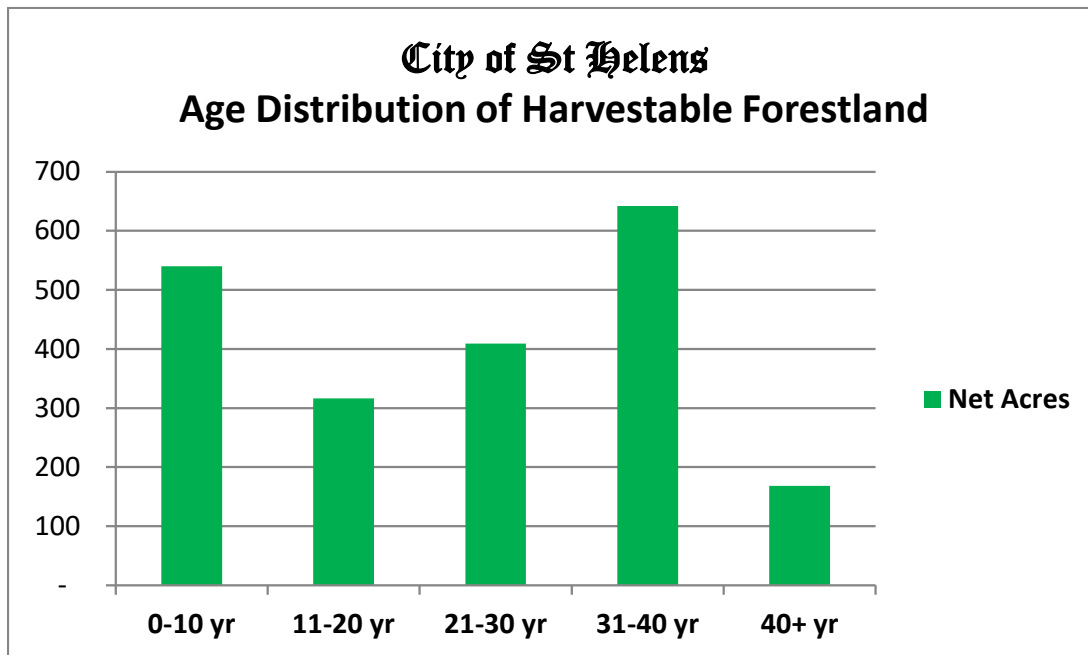
# City of St Helens Milton Creek Watershed Annual Forest Management Review February 5, 2025

## Future Outlook

### City of St Helens Forest Composition

The Milton Creek Watershed contains 2,075-acres of Commercial Forestland. The oldest available stand of timber is now around 42-years of age. There are roughly 170-acres of timber greater than age 40. Within 5 to 10 years, 700-acres will move into the 40+ year category. During that time, the City will continue to have the option of a sustainable annual or at least semi-annual harvest program.

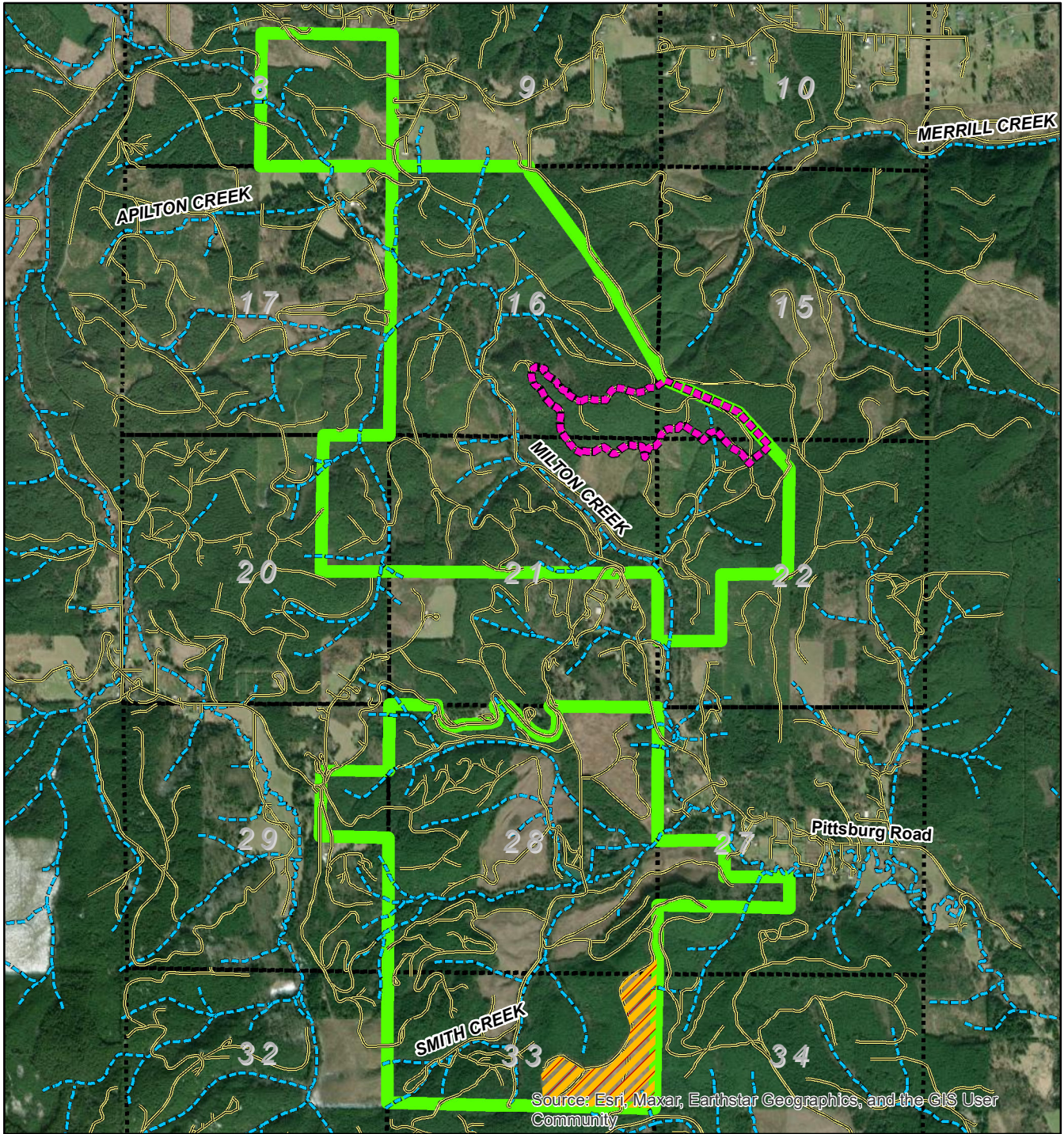
### *Age Distribution of City of St Helens Forestland That is Available for Harvest*



### Current Harvesting Options

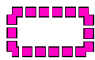





The City currently has roughly 100-acres of readily available merchantable timber. (See Map on Page-6) Given the current market and the increased harvest level of the last eight years, I recommend deferring harvest for a year or two and timing the next harvest with a peak in the log market.

# City of St Helens 2025 Projects Overview



Source: Esri, Maxar, Earthstar Geographics, and the GIS User Community

Township 5 North - Range 2 West

-  2025 PCT Unit (80-acres)
-  2025 Scotch Broom Treatment
-  St Helens Ownership
-  Sections
-  Roads
-  Streams



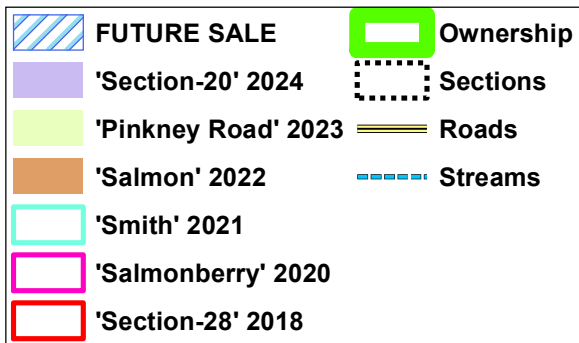
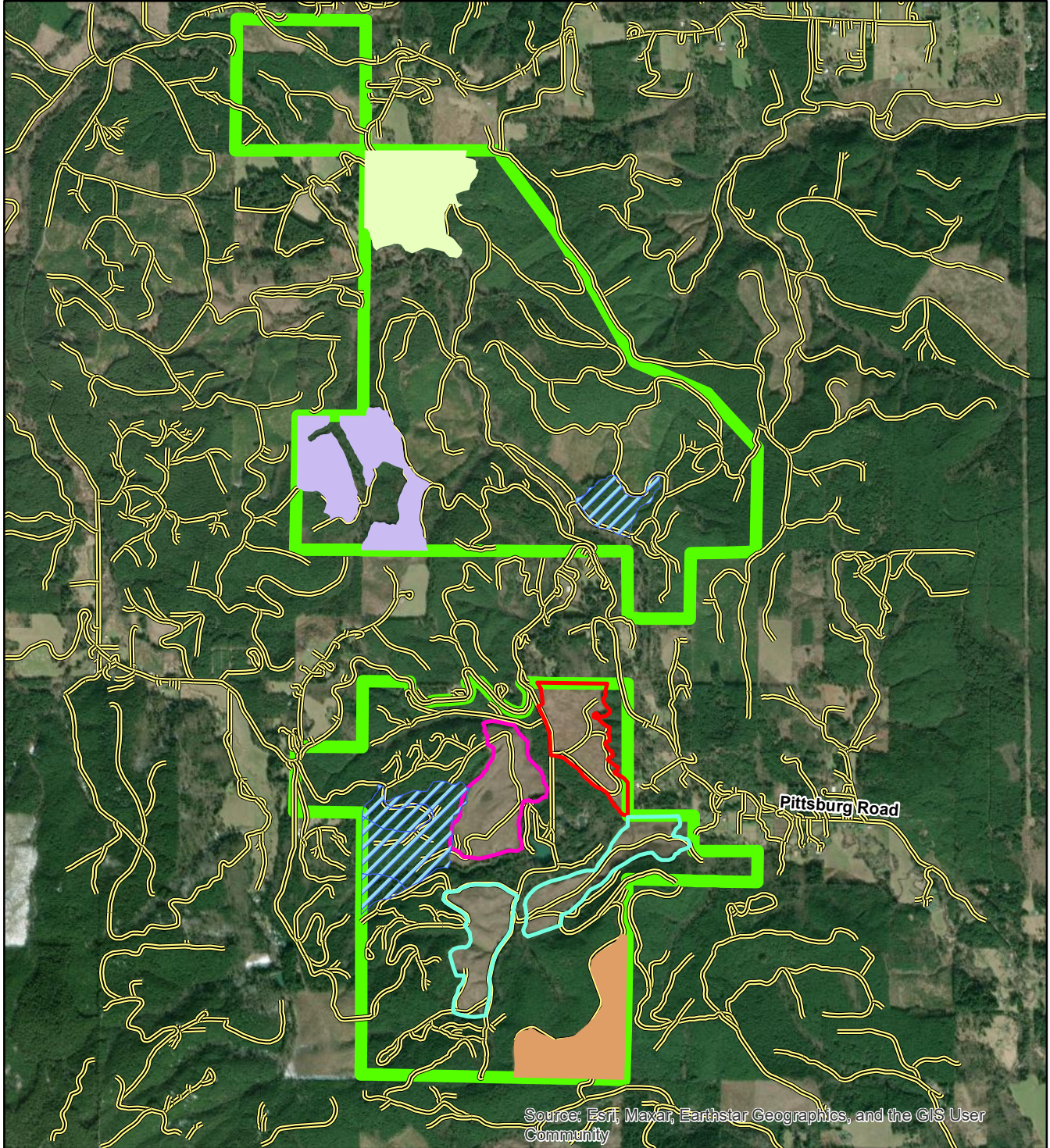
1 inch = 3,000 feet



This product is for informational purposes only and may not be suitable for legal, engineering, or surveying purposes. Information is provided with the understanding that conclusions drawn are the responsibility of the user.

Projection: NAD83, State Plane Oregon North

# City of St Helens Timber Sale History



Township 5 North  
Range 2 West



1 inch = 3,000 feet



This product is for informational purposes only and may not be suitable for legal, engineering, or surveying purposes. Information is provided with the understanding that conclusions drawn are the responsibility of the user.

Projection: NAD83, State Plane Oregon North