

RIVERS EDGE 8TH ADDITION

CITY OF ST. FRANCIS  
COUNTY OF ANOKA  
SEC. 29 & 32, T. 34, R. 24

KNOW ALL PERSONS BY THESE PRESENTS: That St. Francis Land Development, LLC, a Minnesota limited liability company, owner of the following described property:

Outlot A, RIVERS EDGE 2ND ADDITION, Anoka County, Minnesota, according to the record plat thereof.

AND

Outlot A, RIVERS EDGE 5th ADDITION, Anoka County, Minnesota, according to the record plat thereof.

Has caused the same to be surveyed and platted as **RIVERS EDGE 8TH ADDITION** and does hereby dedicate to the public for public use the public ways and the drainage and utility easements as created by this plat.

In witness whereof said St. Francis Land Development, LLC, a Minnesota limited liability company, has caused these presents to be signed by its proper officer this

\_\_\_\_\_ day of \_\_\_\_\_, 20\_\_\_\_\_.

St. Francis Land Development, LLC

By \_\_\_\_\_

Its \_\_\_\_\_

STATE OF \_\_\_\_\_  
COUNTY OF \_\_\_\_\_

This instrument was acknowledged before me this \_\_\_\_\_ day of \_\_\_\_\_, 20\_\_\_\_\_ by \_\_\_\_\_, its

\_\_\_\_\_ of St. Fancis Land Development, LLC, a Minnesota limited liability company, on behalf of the company.

\_\_\_\_\_  
(Signature) (Name Printed)

Notary Public, \_\_\_\_\_ County, \_\_\_\_\_

My Commission Expires \_\_\_\_\_

I Mathew J. Welinski do hereby certify that this plat was prepared by me or under my direct supervision; that I am a duly Licensed Land Surveyor in the State of Minnesota; that this plat is a correct representation of the boundary survey; that all mathematical data and labels are correctly designated on this plat; that all monuments depicted on this plat have been, or will be correctly set within one year; that all water boundaries and wet lands, as defined in Minnesota Statutes, Section 505.01, Subd. 3, as of the date of this certificate are shown and labeled on this plat; and all public ways are shown and labeled on this plat.

Dated this \_\_\_\_\_ day of \_\_\_\_\_, 20\_\_\_\_\_.

\_\_\_\_\_  
Mathew J. Welinski, Licensed Land Surveyor  
Minnesota License No. 53596

STATE OF MINNESOTA  
COUNTY OF HENNEPIN

This instrument was acknowledged before me this \_\_\_\_\_ day of \_\_\_\_\_, 20\_\_\_\_\_ by Mathew J. Welinski.

\_\_\_\_\_  
(Signature) (Name Printed)

Notary Public, \_\_\_\_\_ County, Minnesota

My Commission Expires \_\_\_\_\_

CITY COUNCIL, CITY OF ST. FRANCIS, MINNESOTA

This plat of **RIVERS EDGE 8TH ADDITION** was approved and accepted by the City Council of the City of St. Francis, Minnesota at a regular meeting thereof held this \_\_\_\_\_ day of \_\_\_\_\_, 20\_\_\_\_\_, and said plat is in compliance with the provisions of Minnesota Statutes, Section 505.03, Subd. 2.

CITY COUNCIL, CITY OF ST. FRANCIS, MINNESOTA

\_\_\_\_\_  
Mayor

\_\_\_\_\_  
Clerk

COUNTY SURVEYOR

I hereby certify that in accordance with Minnesota Statutes, Section 505.021, Subd. 11, this plat has been reviewed and approved this \_\_\_\_\_ day of

\_\_\_\_\_, 20\_\_\_\_\_.

\_\_\_\_\_  
David M. Ziegmeier, Anoka County Surveyor

COUNTY AUDITOR/TREASURER

Pursuant to Minnesota Statutes, Section 505.021, Subd. 9, taxes payable in the year 20\_\_\_\_\_ on the land hereinbefore described have been paid. Also, pursuant to

Minnesota Statutes, Section 272.12, there are no delinquent taxes and transfer entered this \_\_\_\_\_ day of \_\_\_\_\_, 20\_\_\_\_\_.

\_\_\_\_\_  
Property Tax Administrator

By \_\_\_\_\_, Deputy

COUNTY RECORDER/REGISTRAR OF TITLES  
County of Anoka, State of Minnesota

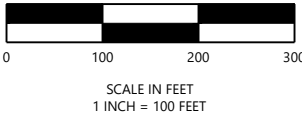
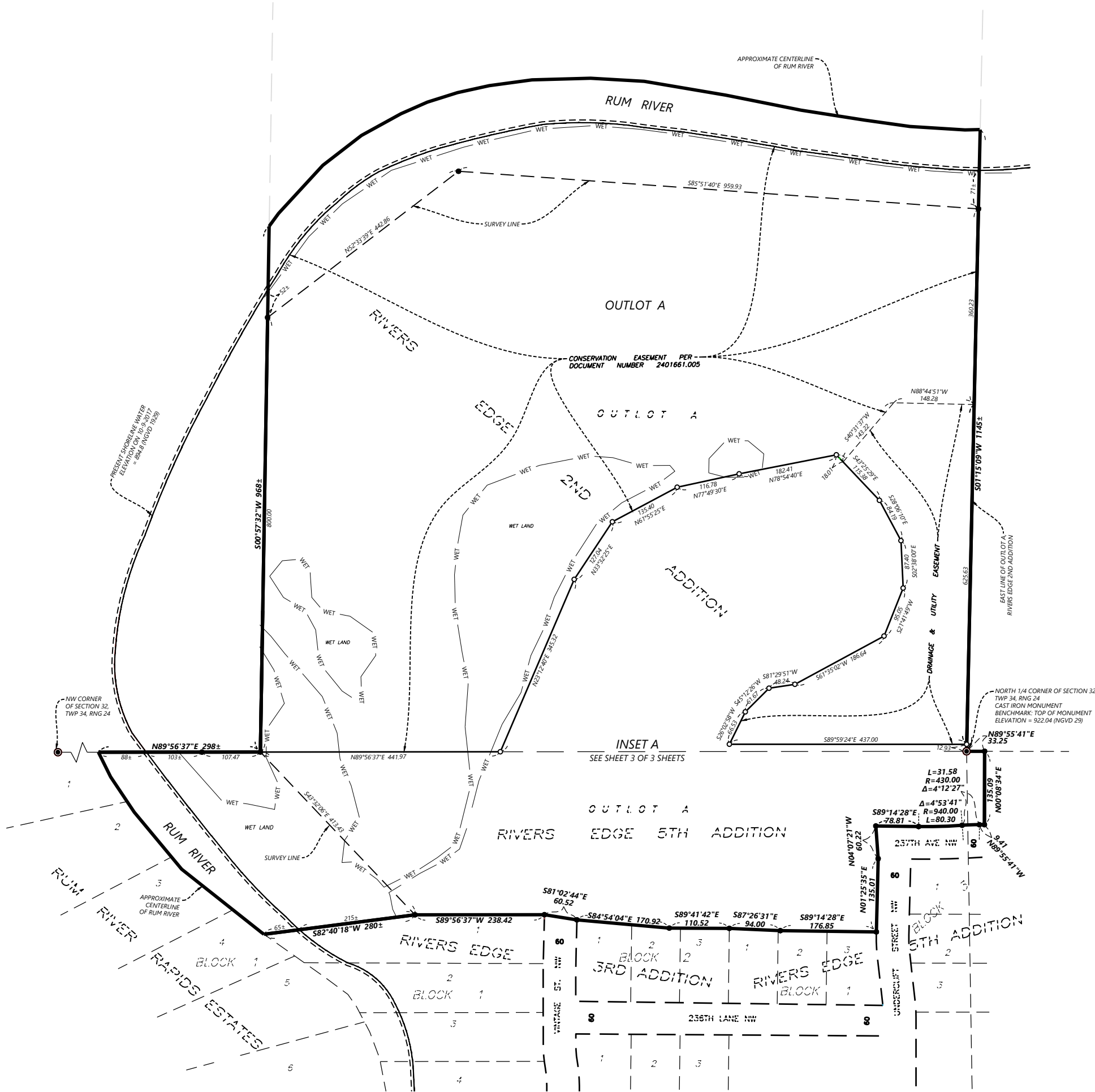
I hereby certify that this plat of **RIVERS EDGE 8TH ADDITION** was filed in the office of the County Recorder/Registrar of Titles for public record on this \_\_\_\_\_ day of \_\_\_\_\_, 20\_\_\_\_\_, at \_\_\_\_\_ o'clock \_\_\_\_\_.M. and was duly recorded as Document Number \_\_\_\_\_.

\_\_\_\_\_  
County Recorder/Registrar of Titles

By \_\_\_\_\_, Deputy

RIVERS EDGE 8TH ADDITION

CITY OF ST. FRANCIS  
COUNTY OF ANOKA  
SEC. 29 & 32, T. 34, R. 24



THE EAST LINE OF OUTLOT A, RIVERS EDGE 2ND ADDITION, IS ASSUMED TO BEAR N01°15'09"E.

LEGEND

- FOUND 1/2 INCH REBAR MONUMENT MARKED LS 43055 (UNLESS OTHERWISE NOTED)
- DENOTES SET 1/2 INCH BY 14 INCH IRON REBAR MONUMENT MARKED WITH PLASTIC CAP INSCRIBED LS 53596
- FOUND ANOKA COUNTY MONUMENT
- WET — DENOTES WET LAND

RIVERS EDGE 8TH ADDITION

CITY OF ST. FRANCIS  
COUNTY OF ANOKA  
SEC. 29 & 32, T. 34, R. 24

INSET A  
(FROM SHEET 2 OF 3 SHEETS)



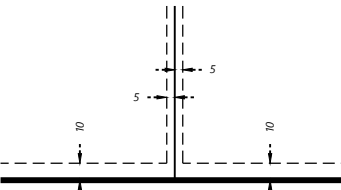
SCALE IN FEET  
1 INCH = 60 FEET

THE EAST LINE OF OUTLOT A, RIVERS EDGE 2ND ADDITION, IS ASSUMED TO BEAR N01°15'09"E.

LEGEND

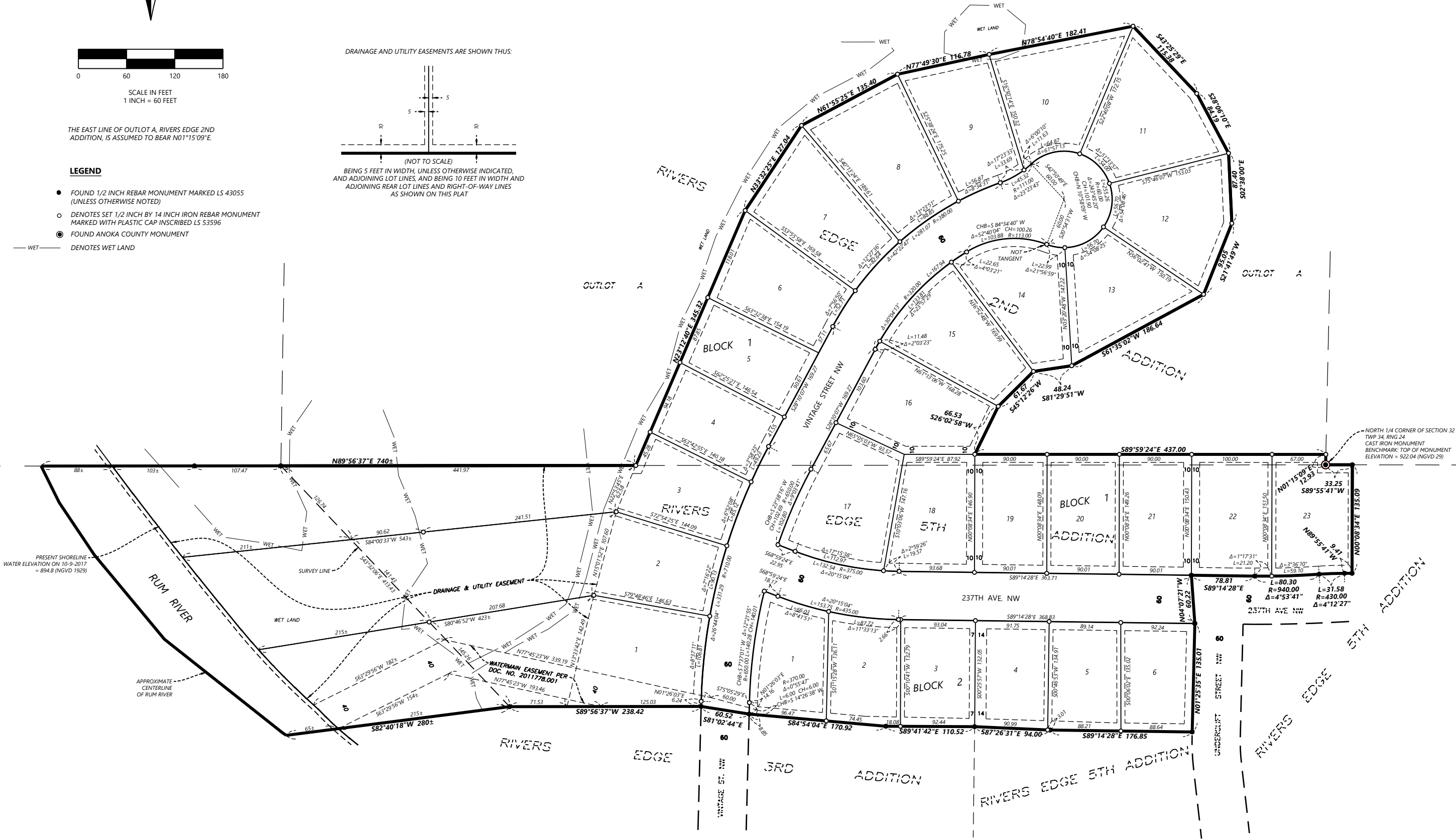
- FOUND 1/2 INCH REBAR MONUMENT MARKED LS 43055 (UNLESS OTHERWISE NOTED)
- DENOTES SET 1/2 INCH BY 14 INCH IRON REBAR MONUMENT MARKED WITH PLASTIC CAP INSCRIBED LS 53596
- FOUND ANOKA COUNTY MONUMENT
- WET — DENOTES WET LAND

DRAINAGE AND UTILITY EASEMENTS ARE SHOWN THUS:



(NOT TO SCALE)

BEING 5 FEET IN WIDTH, UNLESS OTHERWISE INDICATED, AND ADJOINING LOT LINES, AND BEING 10 FEET IN WIDTH AND ADJOINING REAR LOT LINES AND RIGHT-OF-WAY LINES AS SHOWN ON THIS PLAT



NORTH 1/4 CORNER OF SECTION 32  
TWP 34, RING 24  
CAST IRON MONUMENT  
BENCHMARK: TOP OF MONUMENT  
ELEVATION = 922.04 (NGVD 29)

8TH ADDITION

5TH ADDITION

RIVERS EDGE

RIVERS

EDGE

3RD

ADDITION

RIVERS EDGE 5TH ADDITION

UNDERCUT STREET NW