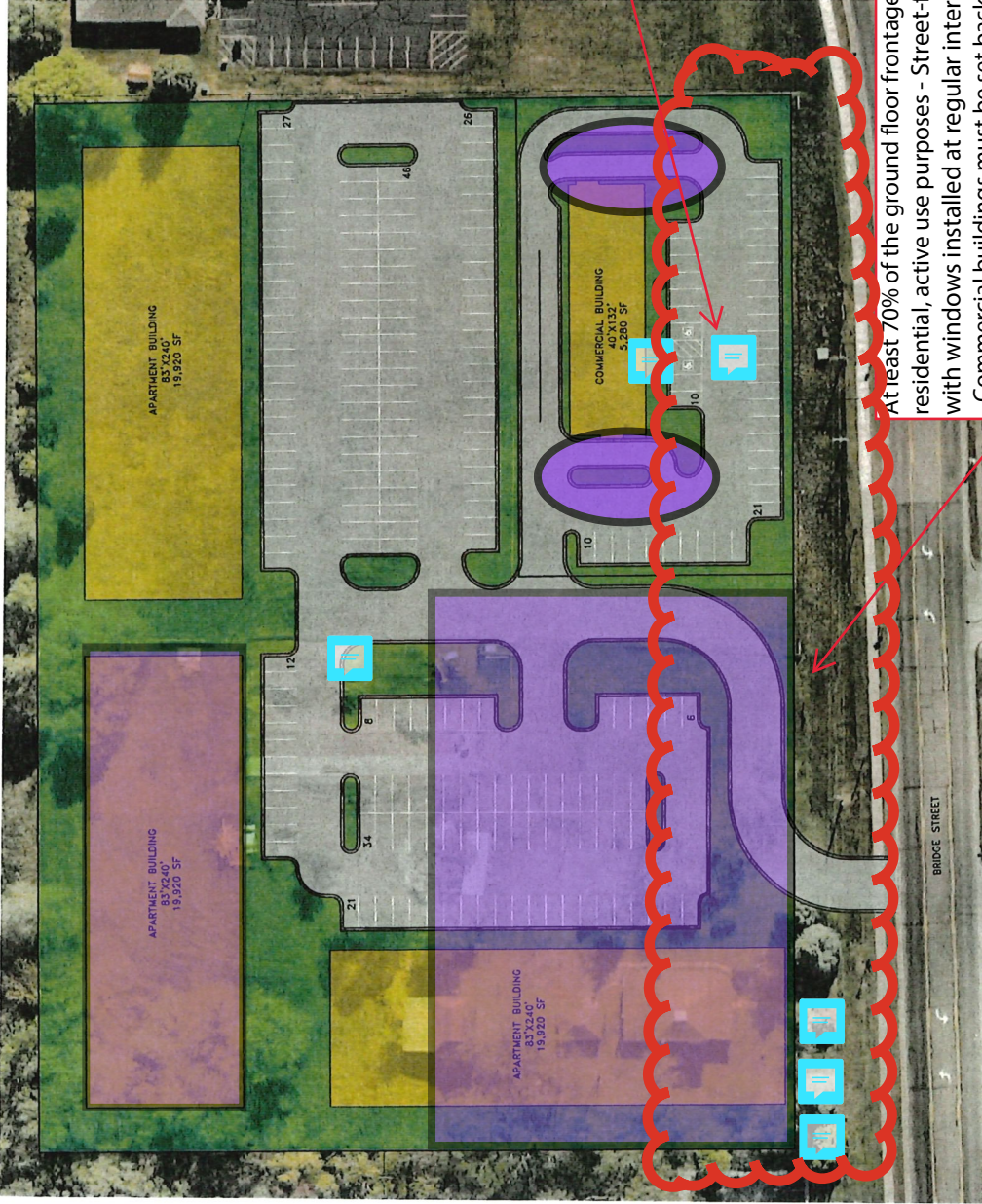


**PARKING SUMMARY**

COMMERCIAL  
 REQUIRED PARKING STALLS (1 STALL PER 4 SEAT'S) 41 STALLS  
 TOTAL PROPOSED PARKING STALLS

APARTMENT BUILDINGS (22 ONE BEDROOM UNITS AND 22 TWO BEDROOM UNITS PER BUILDING)  
 REQUIRED PARKING STALLS (ONE BEDROOM UNIT=1.5 STALLS PER UNIT) 33 STALLS  
 TOTAL PROPOSED PARKING STALLS (TWO BEDROOM UNIT=2.25 STALLS PER UNIT) 50 STALLS  
 TOTAL REQUIRED PARKING STALLS PER BUILDING 83 STALLS  
 TOTAL REQUIRED PARKING STALLS (ALL THREE BUILDINGS) 249 STALLS \*  
 TOTAL PROPOSED PARKING STALLS 180 STALLS \*  
 \* 132 PARKING STALLS SHALL BE ENCLOSED IN GARAGE SPACE (44 PER UNIT)



At least 70% of the ground floor frontage on Bridge St shall be used for publicly-accessible, non-residential, active use purposes - Street-facing building walls must be at least 30% transparent with windows installed at regular intervals-Primary entrances must orient toward Bridge Street - Commercial buildings must be set back 0-5' from front property line



RUM RIVER PRESERVE	PRELIMINARY SITE PLAN	1
CITY OF ST. FRANCIS, MINNESOTA		3395.25