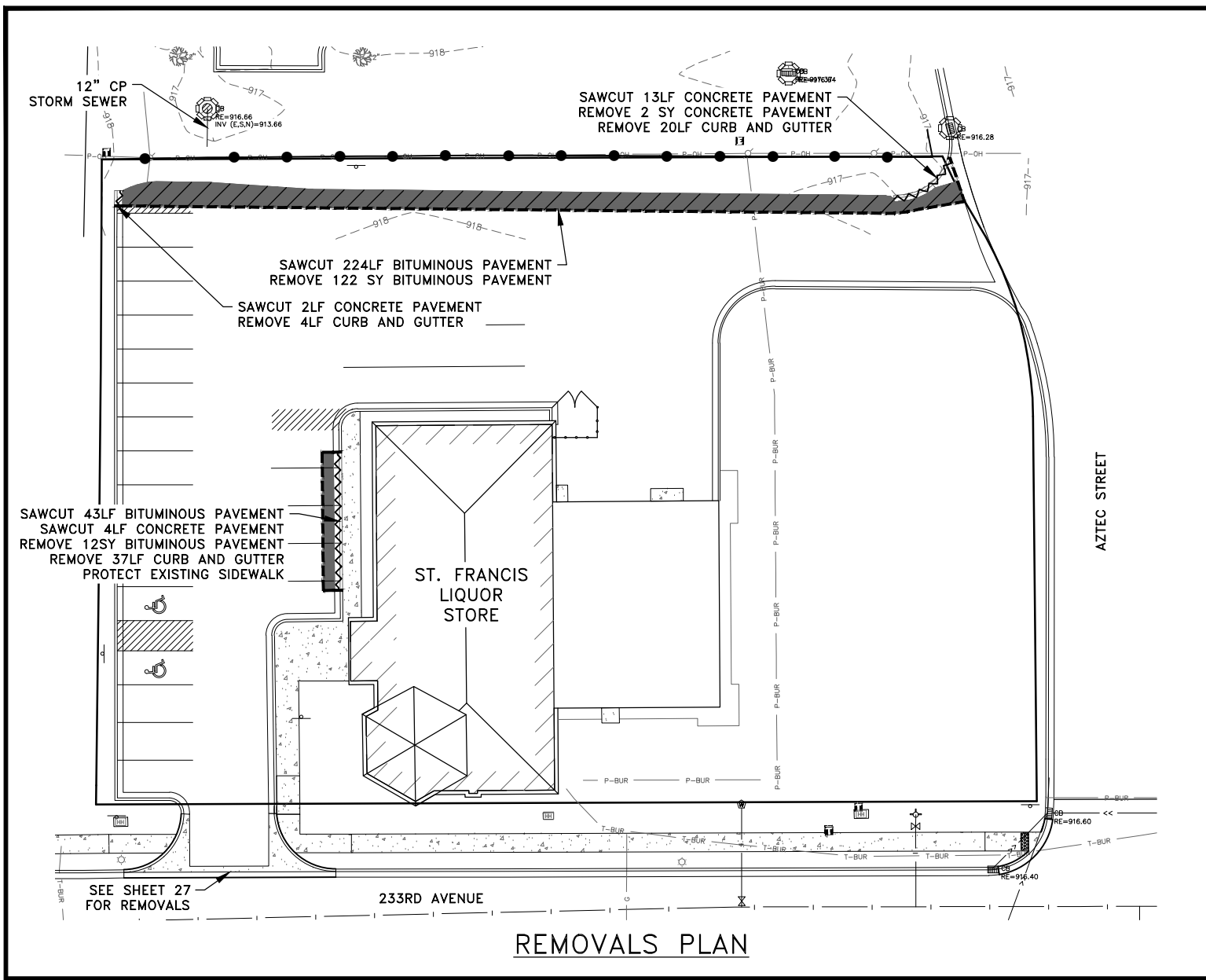
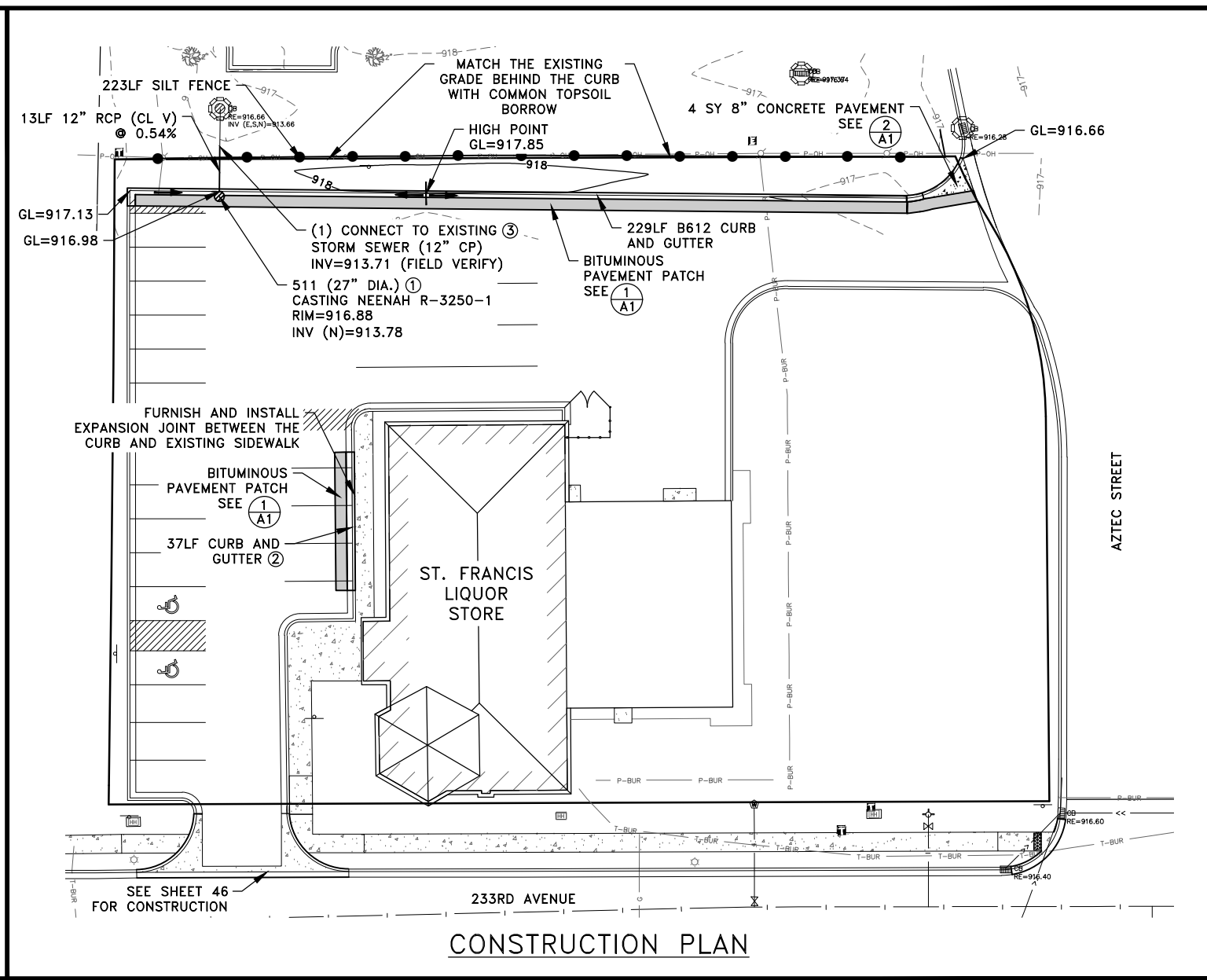


Apr 04, 2025 - 12:49pm
K:\MUNICIPAL\SF326\ENGINEERING\PLAN DWG\SF326_BOTTLE SHOP IMPROVEMENTS.dwg



REMOVALS PLAN



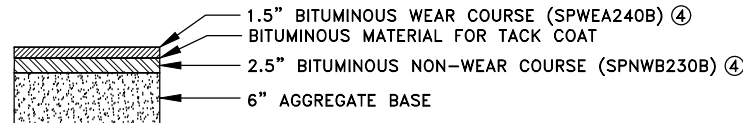
CONSTRUCTION PLAN

GENERAL NOTES:

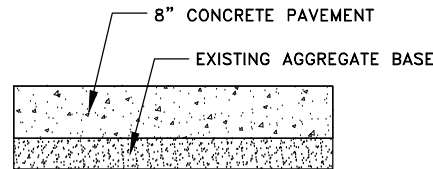
1. ALL DISTURBED AREAS SHALL BE SEEDED, FERTILIZED, AND STABILIZED WITH HYDRAULIC BONDED FIBER MATRIX AT THE RATES SHOWN IN THE BASIS OF ESTIMATED QUANTITIES TABLE. SEEDING SHALL BE A SEPARATE OPERATION AND SHALL NOT BE PLACED WITH THE MULCH MATERIAL. IN CUT AREAS, AND PRIOR TO PLACING THE SEED, CONTRACTOR SHALL SUBCUT DISTURBED AREAS 4 INCHES AND PLACE COMMON TOPSOIL BORROW. ALL REQUIRED EXCAVATION AND REMOVAL AND DISPOSAL OF EXISTING MATERIALS AND SOIL SHALL BE INCIDENTAL.
2. ANY EXISTING STRIPING DAMAGED OR REMOVED DURING CONSTRUCTION SHALL BE RECONSTRUCTED TO MATCH EXISTING CONDITIONS AT THE END OF CONSTRUCTION. THIS WORK SHALL BE INCIDENTAL.

REFERENCE NOTES:

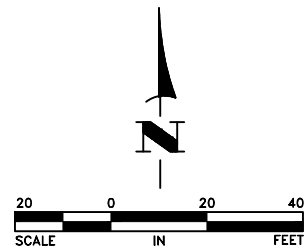
- ① CATCH BASIN SHALL BE CONSTRUCTED PER DETAIL 1 ON SHEET 9 OF THE ORIGINAL PLAN SET.
- ② CURB AND GUTTER WILL BE TIP-OUT. THE WIDTH OF THE CURB AND GUTTER SHALL MATCH THE EXISTING CURB AND GUTTER (B618). THE HEIGHT OF THE TOP OF THE CURB SHALL MATCH THE ADJACENT SIDEWALK. THIS WORK SHALL BE PAID PER ITEM 2531 CONCRETE CURB AND GUTTER DESIGN SPECIAL.
- ③ CONNECT PIPES WITH FERNCO COUPLING OR APPROVED EQUAL.
- ④ THIS WORK SHALL BE PAID PER ITEM 2360 TYPE SP 12.5 BITUMINOUS MIXTURE FOR PATCHING.



1
A1
PARKING LOT PATCH SECTION



2
A1
TYPICAL CONCRETE PAVEMENT



S.A.P. 235-101-003
S.A.P. 235-102-002
S.A.P. 235-121-001
S.A.P. 235-156-001

DATE	REVISION

I hereby certify that this plan, specification, or report was prepared by me or under my direct supervision and that I am a duly Licensed Professional Engineer under the laws of the State of Minnesota.

CRAIG J. JOPLUM, P.E.
Date 2/12/25 Lic. No. 23461

DESIGNED BY:
CJJ

DRAWN BY:
SGJ

CHECKED BY:
TAE



Hakanson Anderson
Civil Engineers and Land Surveyors
3601 Thurston Ave., Anoka, Minnesota 55303
763-427-5860 FAX 763-427-0520
www.hakanson-anderson.com

2025 STREET RECONSTRUCTION PROJECT

LIQUOR STORE PLAN - ADDENDUM NO. 4

CITY OF ST. FRANCIS, MINNESOTA

SHEET
A1
OF
A1
SHEETS