



What
Happened to
our Air on
Labor Day?



September 6th, 2020 |

WEATHER ALERTS

HIGH WIND WARNING

GREATER PORTLAND METRO AREA
MONDAY 5 PM - TUESDAY 1 PM
E 15-30 MPH G 40+ MPH

HIGH WIND WARNING

DARK BROWN LOCATIONS
(HIGHER TERRAIN)
MONDAY 5 PM - TUESDAY 1 PM
VERY STRONG WIND 60 MPH
GUSTS



September 6th, 2020

KOIN 6 WEATHER

WEATHER ALERTS

RED FLAG WARNING



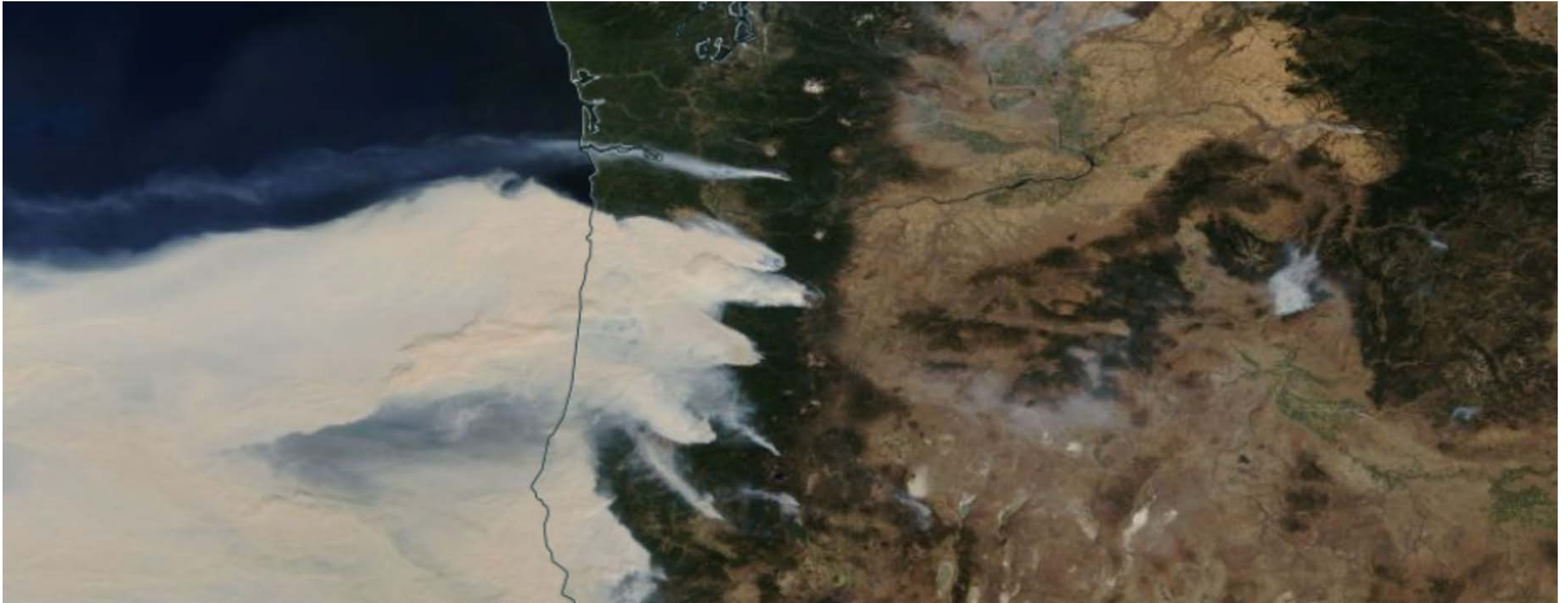
MONDAY AM - WEDNESDAY PM
VERY DRY
RAPID FIRE SPREAD



September 6th, 2020 |



80+ New Fires
Started in WA
and OR
September 7-8



September 9th, 2020 |



September 11th, 2020 |

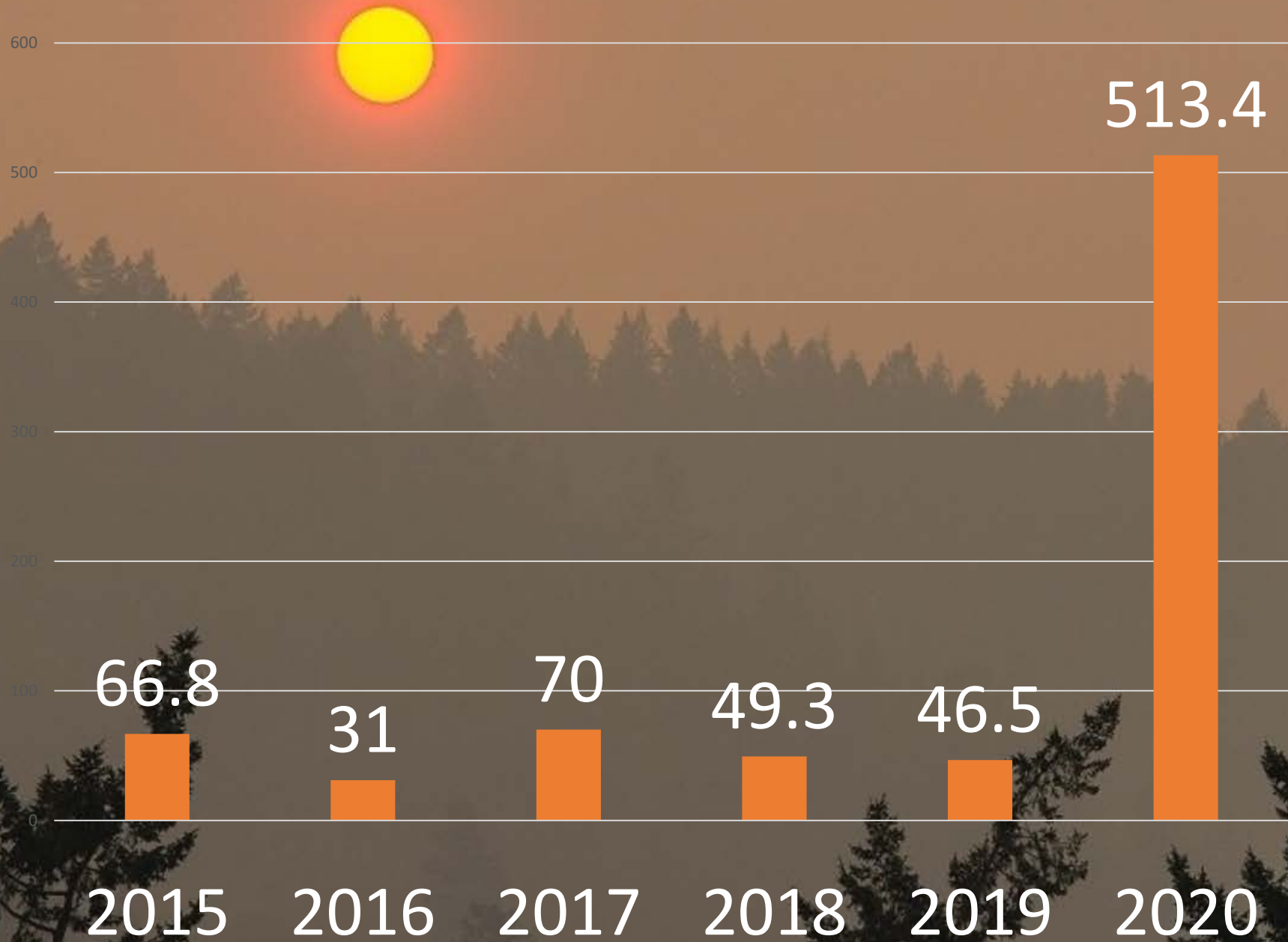


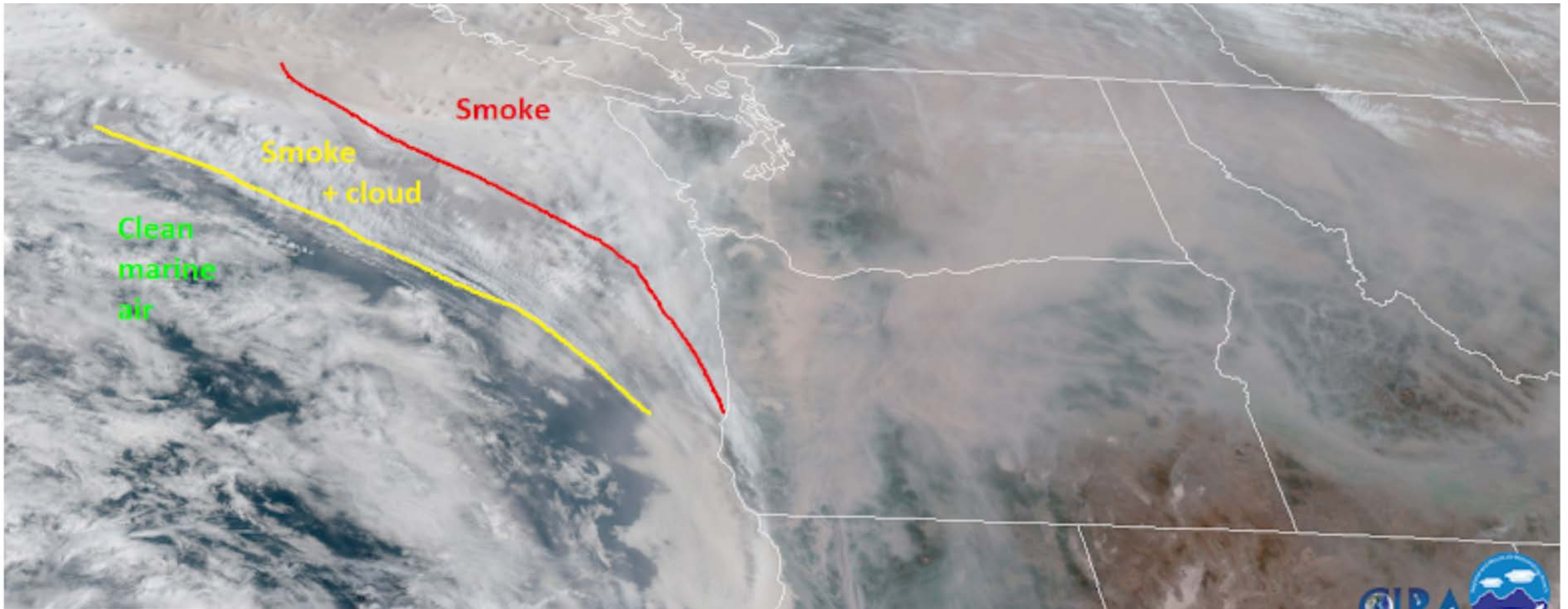
Current Air Quality 5 PM PDT Sep 14

517 NowCast AQI

PM2.5

Worst PM 2.5 Levels (ug/m3 -24hr)





September 13th, 2020 |

Finally Clean Air

Smoke



September 18th, 2020 |