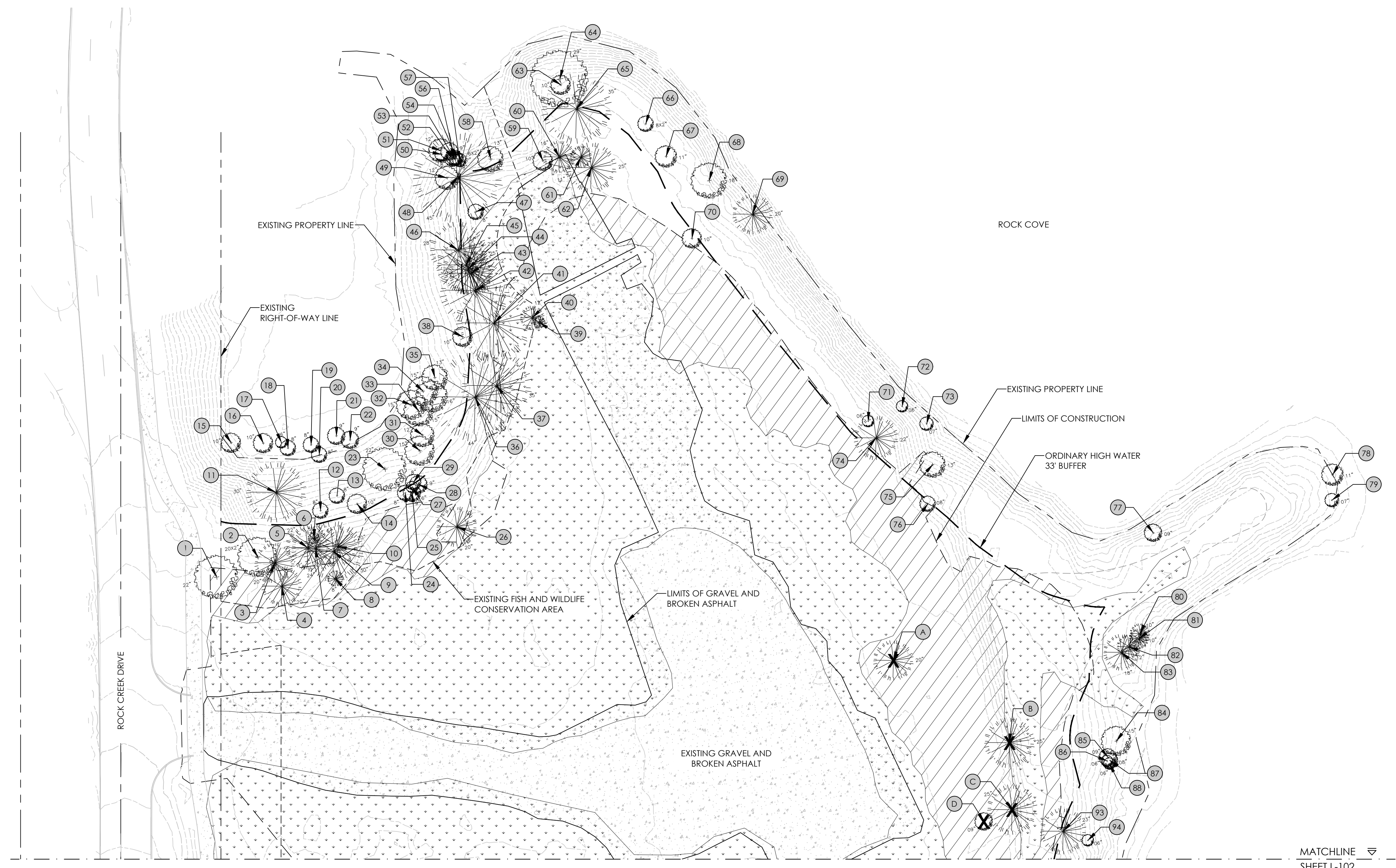
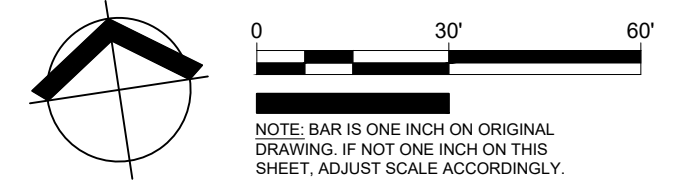


PLOT DATE: Monday, July 24, 2023 FILE LOCATION: C:\Users\Curtis Riley\OneDrive - Cascara Land Design\Cascara Land Design\Projects\0110.03 Rock Creek Cove\CAD\Vegetation Assessment_Plan.dwg



MATCHLINE
SHEET L-102



EXISTING TREES TO REMAIN

TREE NUMBER	SPECIES	SIZE (DBH)
1	NORWAY MAPLE	22"
2	DOUGLAS FIR	20X2"
3	DOUGLAS FIR	20"
4	DOUGLAS FIR	20"
5	DOUGLAS FIR	22"
6	DOUGLAS FIR	6"
7	DOUGLAS FIR	24"
8	DOUGLAS FIR	8"
9	DOUGLAS FIR	30"
10	DOUGLAS FIR	20"
11	DOUGLAS FIR	30"
12	RED ALDER	8"
13	RED ALDER	8"
14	RED ALDER	10"
15	RED ALDER	10"
16	RED ALDER	10"
17	RED ALDER	6"
18	RED ALDER	8"
19	RED ALDER	8"
20	RED ALDER	8"
21	RED ALDER	9"
22	RED ALDER	9"
23	BLACK HAWTHORNE	22"
24	RED ALDER	8"
25	BLACK HAWTHORNE	9"
26	DOUGLAS FIR	20"
27	BLACK HAWTHORNE	6"
28	BLACK HAWTHORNE	9"
29	RED ALDER	8"
30	BIG LEAF MAPLE	15"

TREE NUMBER	SPECIES	SIZE (DBH)
31	RED ALDER	12"
32	RED ALDER	15"
33	RED ALDER	15"
34	RED ALDER	15"
35	RED ALDER	13"
36	DOUGLAS FIR	44"
37	DOUGLAS FIR	35"
38	BIG LEAF MAPLE	10"
39	DOUGLAS FIR	6"
40	DOUGLAS FIR	12"
41	DOUGLAS FIR	38"
42	DOUGLAS FIR	35"
43	DOUGLAS FIR	22"
44	DOUGLAS FIR	25"
45	DOUGLAS FIR	29"
46	DOUGLAS FIR	28"
47	BLACK HAWTHORNE	8"
48	DOUGLAS FIR	45"
49	RED ALDER	12"
50	RED ALDER	7"
51	RED ALDER	12"
52	RED ALDER	8"
53	RED ALDER	6X2"
54	RED ALDER	7"
56	RED ALDER	8"
57	RED ALDER	7"
58	BIG LEAF MAPLE	13"
59	BITTER CHERRY	10"
60	DOUGLAS FIR	16"
61	DOUGLAS FIR	11"

TREE NUMBER	SPECIES	SIZE (DBH)
62	DOUGLAS FIR	25"
63	BIG LEAF MAPLE	10"
64	BIG LEAF MAPLE	29"
65	DOUGLAS FIR	35"
66	RED ALDER	8X2"
67	RED ALDER	11"
68	RED ALDER	18"
69	DOUG FIR	20"
70	RED ALDER	10"
71	CASCARA	6"
72	RED ALDER	6"
73	RED ALDER	7"
74	DOUGLAS FIR	22"
75	BITTER CHERRY	13"
76	RED ALDER	8"
77	RED ALDER	9"
78	RED ALDER	11"
79	RED ALDER	7"
80	DOUGLAS FIR	10"
81	DOUGLAS FIR	10"
82	DOUGLAS FIR	12"
83	DOUGLAS FIR	18"
84	RED ALDER	15"
85	RED ALDER	9"
86	RED ALDER	6"
87	RED ALDER	8"
88	RED ALDER	6"
93	DOUGLAS FIR	23"
94	BIG LEAF MAPLE	6"

TREES PROPOSED FOR REMOVAL

TREE NUMBER	SPECIES	SIZE (DBH)
A	DOUGLAS FIR	20"
B	DOUGLAS FIR	25"
C	DOUGLAS FIR	25"
D	BITTER CHERRY	9"

LEGEND

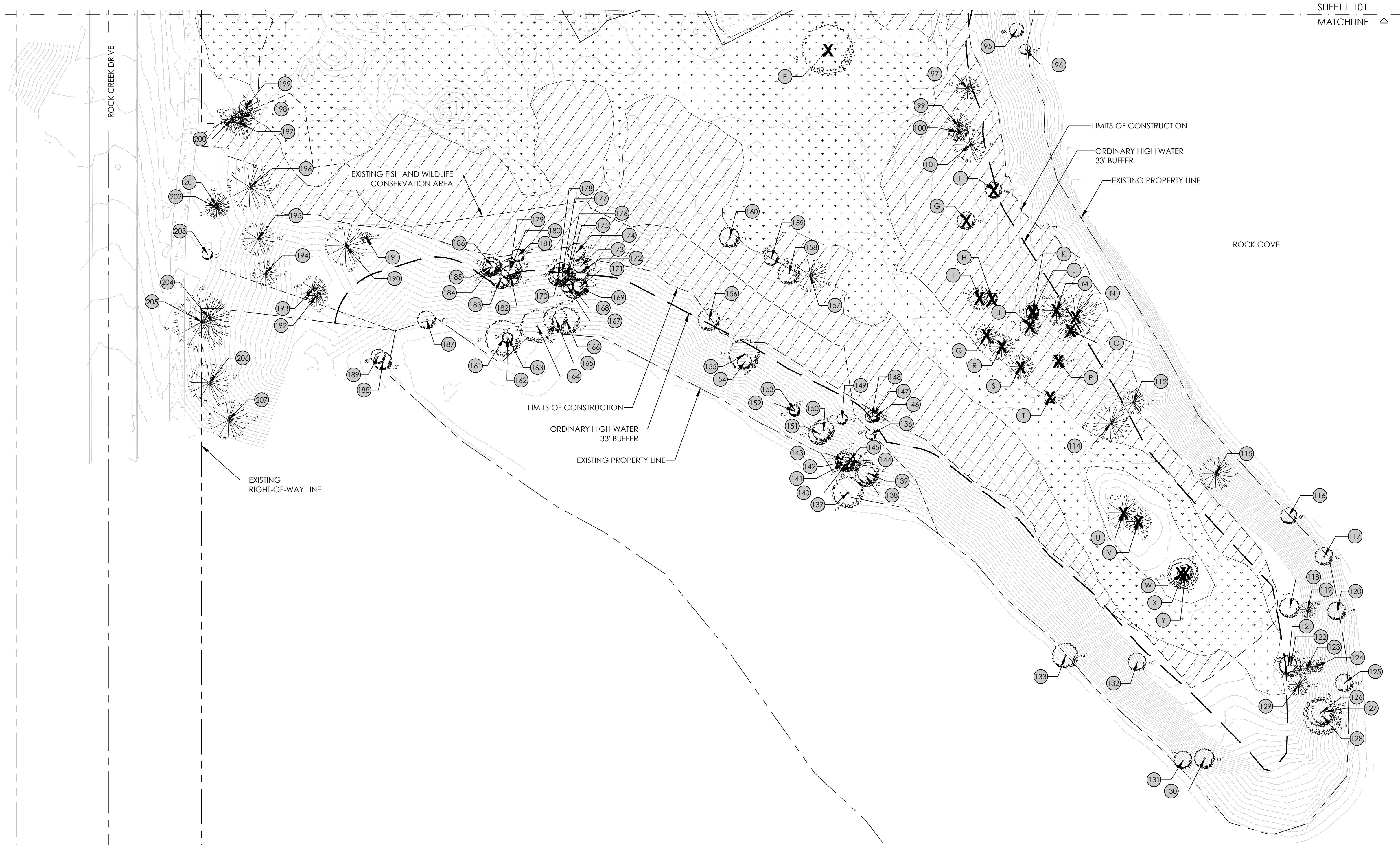
- EXISTING DECIDUOUS TREE
- EXISTING CONIFEROUS TREE
- EXISTING TREE TO BE REMOVED
- EXISTING OPEN GRASSY AREAS
- EXISTING HIMALAYAN BLACKBERRY AREAS TO BE REMOVED

NOTES:

1. THE EXISTING VEGETATION AT ROCK CREEK COVE IS PREDOMINANTLY A MIXED CONIFEROUS/DECIDUOUS RIPARIAN FOREST WITH AN INTERIOR OPEN GRASSY AREA THAT IS SURROUNDED BY A DENSE COVER OF COMMON VETCH AND HIMALAYAN BLACKBERRY.
2. THE EXISTING TREE SPECIES PRESENT INCLUDE DOUGLAS FIR, BLACK COTONWOOD, BIG LEAF MAPLE, RED ALDER, BITTER CHERRY, BLACK HAWTHORNE, BLACK LOCUST, AND A FEW OREGON WHITE OAKS.
3. THE RIPARIAN UNDERSTORY CONSISTS OF A MIX OF NOOTKA ROSE, SWAMP ROSE, OCEAN SPRAY, SERVICEBERRY, OREGON GRAPE, AND LADY FERN. THE RIPARIAN GROUND COVER IS COMPRISED MOSTLY OF THE INVASIVE HIMALAYAN BLACKBERRY AND COMMON VETCH THAT HAS SPREAD THROUGHOUT NEARLY ALL OF THE VEGETATED AREAS.
4. THE OPEN GRASSY AREAS IN THE INTERIOR OF THE SITE INCLUDE A MIX OF NATIVE AND NONNATIVE GRASSES, PATCHES OF YOUNG COTTONWOODS, WHITE CLOVER, COMMON CHICORY, MEADOW HAWKWEED, SCOTCH BROOM, COMMON HORSETAIL, COMMON VETCH, THISTLE, QUEEN ANNE'S LACE, CURLY DOCK, AND HIMALAYAN BLACKBERRY.
5. THE VEGETATED AREAS THAT ARE WITHOUT TREE CANOPY AND NOT WITHIN THE GRASSY OPEN AREAS CONSIST OF A DENSE COVER OF COMMON VETCH AND HIMALAYAN BLACKBERRY.
6. THE VEGETATED AREAS LOWER IN ELEVATION ADJACENT TO ROCK CREEK COVE INCLUDE A MIX OF WILLOWS, COMMON RUSH, SPREADING RUSH, SPIREA, TUFTED HAIRGRASS, YELLOW FLAG IRIS, COMMON VETCH, AND HIMALAYAN BLACKBERRY.
7. A TOTAL OF 25 TREES WILL BE IMPACTED AND REMOVED DURING CONSTRUCTION. 15 OF THE TREES TO BE REMOVED HAVE A DBH GREATER THAN OR EQUAL TO 12".
8. A TOTAL OF 40 TREES WILL BE REPLANTED. REFER TO SHEETS L201 - L203 FOR THEIR SPECIES, SIZE, AND LOCATION.
9. THE EXISTING OPEN GRASSY AREAS CONSIST OF 95,485 SF. ALL OF THE GRASSY AREAS WILL BE IMPACTED DURING CONSTRUCTION AND WILL BE REPLANTED WITH A TOTAL OF 500 SHRUBS, 45 ORNAMENTAL GRASSES, 411 PERENNIALS, 209 GROUNDCOVERS, AND 64,677 SF OF RESEEDED GRASS AREAS. REFER TO SHEETS L201 - L203 FOR SPECIES, SIZE, AND LOCATION OF THE PROPOSED PLANTINGS.
10. THE PROPOSED CONSTRUCTION WILL REMOVE 61,067 SF OF HIMALAYAN BLACKBERRY AND COMMON VETCH.

Revisions:

PLOT DATE: Monday, July 24, 2023 FILE LOCATION: C:\Users\Curtis Riley\OneDrive - Cascara Land Design\Cascara Land Design\Projects\0110.03 Rock Creek Cove\CAD\Vegetation Assessment_Plan.dwg



SHEET L-101
MATCHLINE

EXISTING TREES TO REMAIN

TREE NUMBER	SPECIES	SIZE (DBH)
95	RED ALDER	8"
96	RED ALDER	6"
97	DOUGLAS FIR	13"
99	DOUGLAS FIR	14"
100	DOUGLAS FIR	11"
101	DOUGLAS FIR	19"
112	DOUGLAS FIR	13"
114	DOUGLAS FIR	20"
115	DOUGLAS FIR	18"
116	PACIFIC DOGWOOD	9"
117	OREGON ASH	10"
118	RED ALDER	11"
119	DOUGLAS FIR	9"
120	RED ALDER	10"
121	WESTERN SERVICEBERRY	10"
122	WESTERN SERVICEBERRY	12"
123	DOUGLAS FIR	7"
124	DOUGLAS FIR	7"
125	WESTERN SERVICEBERRY	10"
126	OREGON WHITE OAK	15"
127	OREGON WHITE OAK	14"
128	OREGON WHITE OAK	21"
129	DOUGLAS FIR	12"
130	BITTER CHERRY	11"
131	RED ALDER	12"
132	BITTER CHERRY	10"
133	BITTER CHERRY	14"
136	BLACK LOCUST	6"
137	BLACK LOCUST	17"
138	BLACK LOCUST	12"
139	BLACK LOCUST	12"
140	BLACK LOCUST	8"
141	BLACK LOCUST	6"

TREE NUMBER	SPECIES	SIZE (DBH)
142	BLACK LOCUST	7"
143	BLACK LOCUST	7"
144	BLACK LOCUST	13"
145	BLACK LOCUST	11"
146	BLACK LOCUST	6"
147	BLACK LOCUST	6"
148	BLACK LOCUST	7"
149	BLACK LOCUST	6"
150	BLACK LOCUST	12"
151	BLACK LOCUST	12"
152	BLACK LOCUST	6"
153	BLACK LOCUST	6"
154	BLACK LOCUST	8"
155	BLACK LOCUST	17"
156	BLACK LOCUST	12"
157	DOUGLAS FIR	18"
158	BITTER CHERRY	12"
159	BITTER CHERRY	8"
160	BLACK LOCUST	11"
161	COTTONWOOD	20"
162	COTTONWOOD	6"
163	COTTONWOOD	6"
164	RED ALDER	18"
165	RED ALDER	13"
166	RED ALDER	15"
167	BLACK LOCUST	8"
168	BLACK LOCUST	11"
169	BLACK LOCUST	7"
170	BLACK LOCUST	10"
171	BLACK LOCUST	7"
172	BLACK LOCUST	10"
173	BLACK LOCUST	8"
174	BLACK LOCUST	10"
175	BLACK LOCUST	9"

TREE NUMBER	SPECIES	SIZE (DBH)
176	BLACK LOCUST	11"
177	BLACK LOCUST	6"
178	BLACK LOCUST	9"
179	BLACK LOCUST	10"
180	BLACK LOCUST	12"
181	BLACK LOCUST	7"
182	BLACK LOCUST	12"
183	BLACK LOCUST	11"
184	BLACK LOCUST	7"
185	BLACK LOCUST	10"
186	BLACK LOCUST	11"
187	RED ALDER	10"
188	RED ALDER	10"
189	RED ALDER	8"
190	DOUGLAS FIR	25"
191	DOUGLAS FIR	6"
192	DOUGLAS FIR	12"
193	DOUGLAS FIR	14"
194	DOUGLAS FIR	14"
195	DOUGLAS FIR	18"
196	DOUGLAS FIR	25"
197	DOUGLAS FIR	14"
198	DOUGLAS FIR	8"
199	DOUGLAS FIR	8"
200	DOUGLAS FIR	13"
201	DOUGLAS FIR	14"
202	DOUGLAS FIR	9"
203	OREGON WHITE OAK	6"
204	DOUGLAS FIR	22"
205	DOUGLAS FIR	32"
206	DOUGLAS FIR	23"
207	Douglas Fir	22"

TREES PROPOSED FOR REMOVAL

TREE NUMBER	SPECIES	SIZE (DBH)
E	COTTONWOOD	28"
F	BIG LEAF MAPLE	9"
G	BIG LEAF MAPLE	10"
H	BIG LEAF MAPLE	6"
I	DOUGLAS FIR	13"
J	DOUGLAS FIR	12"
K	CASCARA	7"
L	BIG LEAF MAPLE	7"
M	DOUGLAS FIR	18"
N	DOUGLAS FIR	24"
O	DOUGLAS FIR	6"
P	DOUGLAS FIR	7"
Q	DOUGLAS FIR	12"
R	DOUGLAS FIR	14"
S	DOUGLAS FIR	14"
T	BIG LEAF MAPLE	6"
U	DOUGLAS FIR	19"
V	DOUGLAS FIR	15"
W	COTTONWOOD	12"
X	COTTONWOOD	17"
Y	COTTONWOOD	9"

LEGEND

- EXISTING DECIDUOUS TREE
- EXISTING CONIFEROUS TREE
- EXISTING TREE TO BE REMOVED
- EXISTING OPEN GRASSY AREAS
- EXISTING HIMALAYAN BLACKBERRY AREAS TO BE REMOVED

NOTES:

1. THE EXISTING VEGETATION AT ROCK CREEK COVE IS PREDOMINANTLY A MIXED CONIFEROUS/DECIDUOUS RIPARIAN FOREST WITH AN INTERIOR OPEN GRASSY AREA THAT IS SURROUNDED BY A DENSE COVER OF COMMON VETCH AND HIMALAYAN BLACKBERRY.
2. THE EXISTING TREE SPECIES PRESENT INCLUDE DOUGLAS FIR, BLACK COTTONWOOD, BIG LEAF MAPLE, RED ALDER, BITTER CHERRY, BLACK HAWTHORNE, BLACK LOCUST, AND A FEW OREGON WHITE OAKS.
3. THE RIPARIAN UNDERSTORY CONSISTS OF A MIX OF NOOTKA ROSE, SWAMP ROSE, OCEAN SPRAY, SERVICEBERRY, OREGON GRAPE, AND LADY FERN. THE RIPARIAN GROUND COVER IS COMPRISED MOSTLY OF THE INVASIVE HIMALAYAN BLACKBERRY AND COMMON VETCH THAT HAS SPREAD THROUGHOUT NEARLY ALL OF THE VEGETATED AREAS.
4. THE OPEN GRASSY AREAS IN THE INTERIOR OF THE SITE INCLUDE A MIX OF NATIVE AND NONNATIVE GRASSES, PATCHES OF YOUNG COTTONWOODS, WHITE CLOVER, COMMON CHICORY, MEADOW HAWKWEED, SCOTCH BROOM, COMMON HORSETAIL, COMMON VETCH, THISTLE, QUEEN ANNE'S LACE, CURLY DOCK, AND HIMALAYAN BLACKBERRY.
5. THE VEGETATED AREAS THAT ARE WITHOUT TREE CANOPY AND NOT WITHIN THE GRASSY OPEN AREAS CONSIST OF A DENSE COVER OF COMMON VETCH AND HIMALAYAN BLACKBERRY.
6. THE VEGETATED AREAS LOWER IN ELEVATION ADJACENT TO ROCK COVE INCLUDE A MIX OF WILLOWS, COMMON RUSH, SPREADING RUSH, SPIREA, TUFTED HAIRGRASS, YELLOW FLAG IRIS, COMMON VETCH, AND HIMALAYAN BLACKBERRY.
7. A TOTAL OF 25 TREES WILL BE IMPACTED AND REMOVED DURING CONSTRUCTION. 15 OF THE TREES TO BE REMOVED HAVE A DBH GREATER THAN OR EQUAL TO 12".
8. A TOTAL OF 40 TREES WILL BE REPLANTED. REFER TO SHEETS L201 - L203 FOR THEIR SPECIES, SIZE, AND LOCATION.
9. THE EXISTING OPEN GRASSY AREAS CONSIST OF 95,485 SF. ALL OF THE GRASSY AREAS WILL BE IMPACTED DURING CONSTRUCTION AND WILL BE REPLANTED WITH A TOTAL OF 300 SHRUBS, 45 ORNAMENTAL GRASSES, 411 PERENNIALS, 209 GROUNDCOVERS, AND 64,977 SF OF RESEEDED GRASS AREAS. REFER TO SHEETS L201 - L203 FOR SPECIES, SIZE, AND LOCATION OF THE PROPOSED PLANTINGS.
10. THE PROPOSED CONSTRUCTION WILL REMOVE 61,067 SF OF HIMALAYAN BLACKBERRY AND COMMON VETCH.