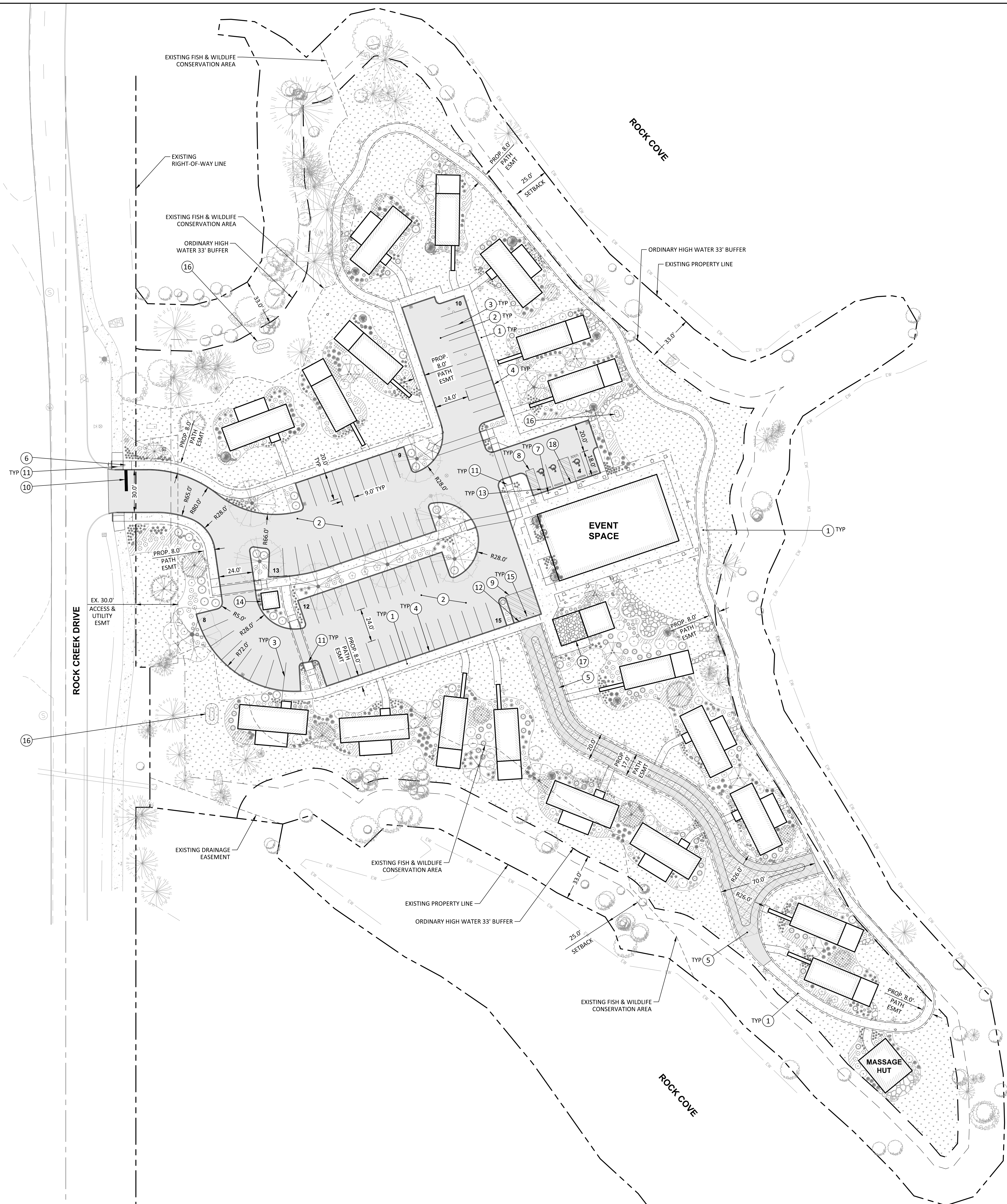


W:\02-Misc\overFDM\FDM\_Development\FDM1-01\_Rock\_Creek\_Cove\FDM1-02-00\_OVERALL\_SITE\_PLAN.dwg



**CONSTRUCTION NOTES:**

- 1 CONSTRUCT CONCRETE SIDEWALK PER DETAIL ON SHEET C6.00.
- 2 CONSTRUCT AC PAVEMENT PER SECTIONS ON SHEET C6.00.
- 3 PAINT 4" WHITE PARKING STRIPE PER DETAILS ON SHEET C6.00.
- 4 CONSTRUCT STANDARD CONCRETE 6" CURB PER DETAIL ON SHEET C6.00.
- 5 CONSTRUCT FIRE ACCESS AND PEDESTRIAN PATH PER SECTION ON SHEET C6.00.
- 6 INSTALL STOP SIGN AND POST PER DETAIL ON SHEET C6.00.
- 7 INSTALL ACCESSIBLE PARKING SIGN PER DETAILS ON SHEET C6.00. VAN ACCESSIBLE SIGN TO BE INSTALLED WHERE SHOWN ON PLANS.
- 8 PAINT LOADING ZONE STRIPING AND ACCESSIBLE PARKING SYMBOL PER DETAILS ON SHEET C6.00.
- 9 PAINT "NO PARKING" STRIPING PER DETAIL ON SHEET C6.00.
- 10 PAINT STOP BAR PER DETAIL ON SHEET C6.00.
- 11 INSTALL PERPENDICULAR SIDEWALK RAMP PER DETAIL ON SHEET C6.00.
- 12 INSTALL MOUNTABLE CURB PER DETAIL ON SHEET 6.00. INSTALL CONSTRUCTION JOINT ON EITHER END.
- 13 INSTALL CONCRETE WHEELSTOP PER DETAIL ON SHEET C6.00.
- 14 PROPOSED COVERED TRASH ENCLOSURE.
- 15 INSTALL REMOVABLE BOLLARD WITH KNOX PADLOCK PER DETAIL ON SHEET C6.00.
- 16 PROPOSED STORMWATER FACILITY. REFER TO UTILITY PLANS FOR INFORMATION.
- 17 PROPOSED STORAGE AREA AND GAZEBO. REFER TO ARCHITECTURAL PLANS FOR INFORMATION.
- 18 CONSTRUCT FLUSH CURB PER DETAIL ON SHEET C6.00.

OVERALL SITE PLAN  
**ROCK CREEK COVE HOSPITALITY**  
 STEVENSON, WASHINGTON

**Harper Houf Peterson Righellis Inc.**  
 ENGINEERS, ARCHITECTS, SURVEYORS  
 LANDSCAPE ARCHITECTS & SURVEYORS  
 205 SE Spokane Street, Suite 200, Portland, OR 97202  
 phone: 503.221.1131 www.hhr.com

NOT FOR CONSTRUCTION

DESIGNED:	HHR	DRAWN:	HHR	CHECKED:	HHR	DATE:	05/09/2023
R E V I S I O N S							
SHEET NO.	<b>C3.00</b>						
JOB NO.	FDM-01A						

