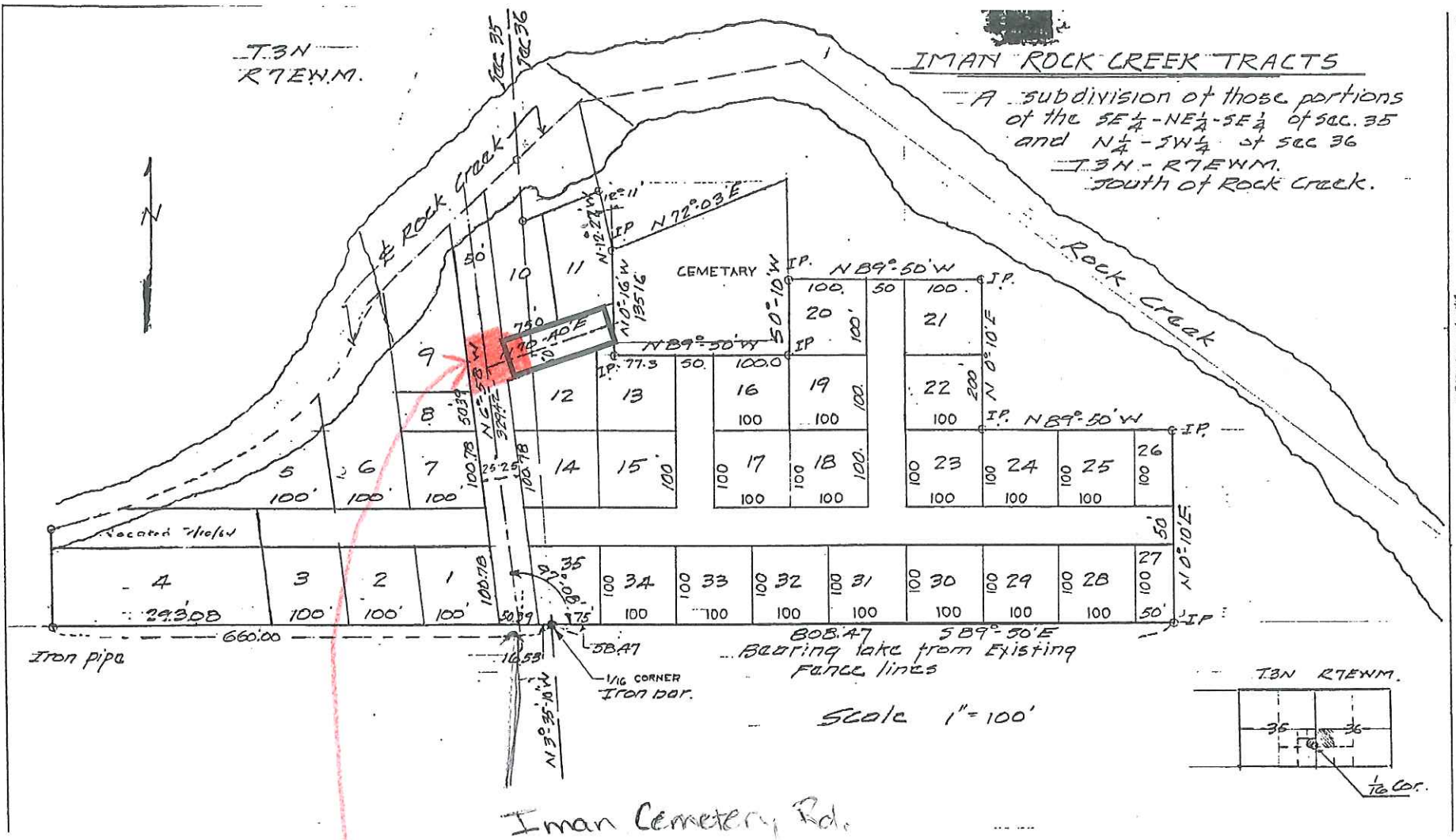


NO. 11112

T.3N  
R.7E.W.M.

### IMAN ROCK CREEK TRACTS

A subdivision of those portions  
of the SE 1/4 - NE 1/4 - SE 1/4 of sec. 35  
and N 1/4 - SW 1/4 of sec. 36  
T.3N - R.7E.W.M.  
south of Rock Creek.



**FIRE APP. NEEDED  
TURN AROUND**

