



City of Stevenson

SEWER ORDINANCE



PO Box 371
Stevenson WA
98648

EMBRACING OUR DUTY

PRESORTED
FIRST CLASS MAIL
U.S. POSTAGE PAID
STEVENSON, WA 98648
PERMIT NO. 20



We have a duty to provide a minimum level of service for Stevenson residents as cost effectively as possible. We recognize we are failing at this and the 1972 Sewer Ordinance is why. This is our opportunity to fix it.

QUESTIONS YOU MAY ASK YOURSELF:

- What's in place now?
- What is being proposed?
- How will this affect me?



Stevenson Wastewater Treatment Plant

For more information head to:

www.ci.stevenson.wa.us

Or stop by City Hall

Or email
tiffany@ci.stevenson.wa.us

Or call
509-427-5970

The City Council will discuss August 24th at their Work Shop and on September 21st, at the Regular Council Meeting

What's in Place?

The 1972 Sewer Ordinance. The City code requires connection to public sewer when a proposed building is within 300 ft of public sewer.

What's Proposed?

City code would require connection to public sewer when the property line of a proposed building is within 300 ft of public sewer OR if the property is located within the Urban Reserve (UR), as designated on the City of Stevenson Comprehensive Plan Future Land Use Map. (see map to the right) This code would also be applied when an existing septic system requires replacement or expansion.

How does my property fit into this map?

The 2013 Stevenson Comprehensive Plan outlines where the community anticipates growth:

In the red or purple areas? Expect commercial and industrial activity.

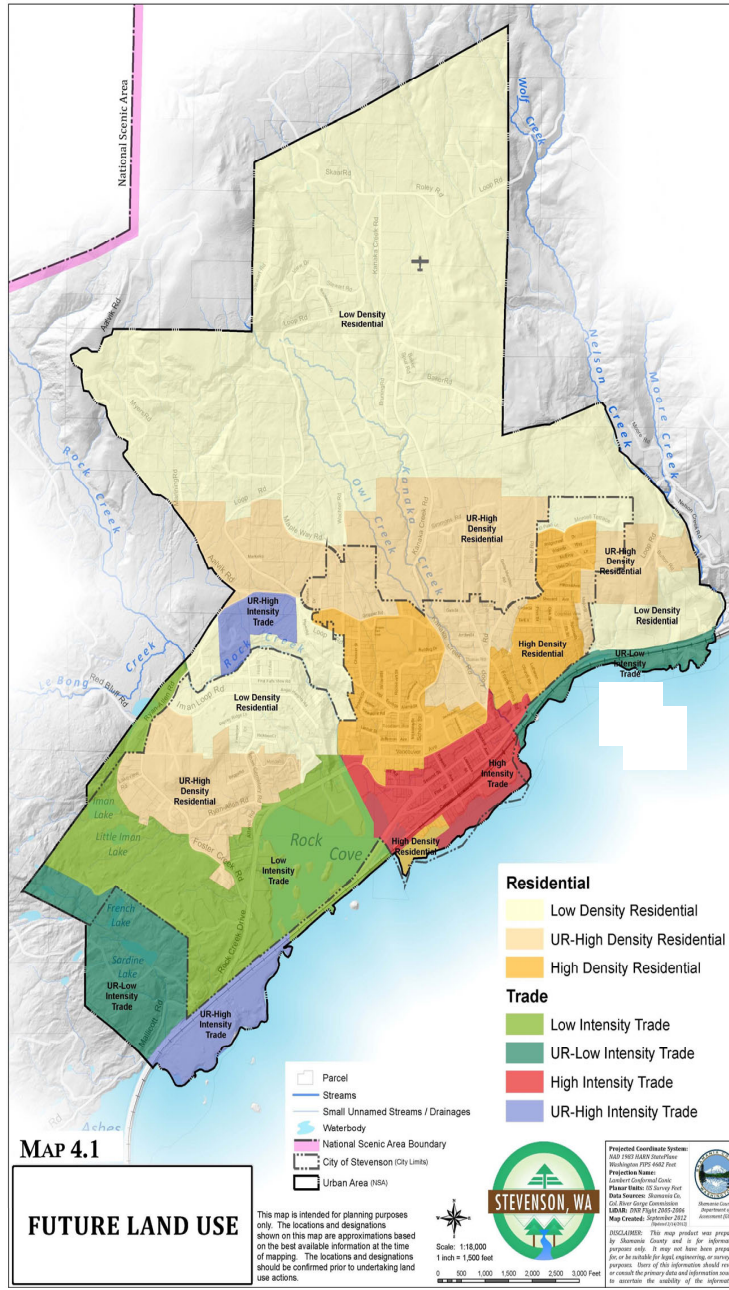
In green areas? Expect recreation and resorts.

In light yellow areas? Expect large lots and rural activities.

In the orange or tan areas close to downtown and SR14? Expect residential neighborhoods.

*The 2017 General Sewer Plan aligns sewer extensions with the Comprehensive Plan.

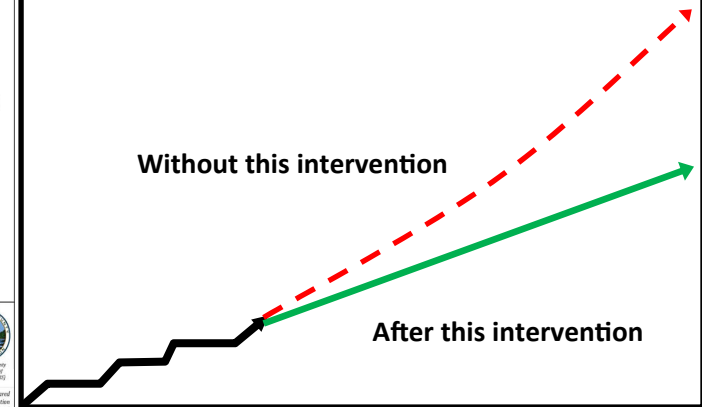
*The 1972 Sewer Ordinance doesn't align and undermines both of these plans.



How does this affect me?

- If you are a **current sewer user**, this code update will positively impact your monthly sewer bills. (We can't promise they will go down, but we can promise they will go up faster if this doesn't happen.)
- If you are **currently on septic**, this code update won't affect you until your system needs to be replaced or expanded.
- If you **own vacant land where the community anticipates growth**, this code update will discourage the type of low density residential that is causing problems for others.
- If you **own vacant land where the community doesn't anticipate growth**, this code update will not affect you .

Utility Rate Projections:



Imagine you are on a road trip. Beforehand you budgeted for gas, but with each stop, your trip funds dwindle because it is just you paying the bill. Now imagine the same trip with a few of your best friends.

Not only are your spirits higher and it's more fun, you are splitting the gas stops between you. Sharing the load. That is the goal of this update: Sharing The Load.

