



Columbia Avenue Realignment

PROJECT UPDATE



MAUL FOSTER ALONG!

Background



Existing Conditions





- Legend**
- Water Valve
 - Municipal Water
 - ▭ Realignment Area
 - ▭ Tax Lots

Utilities

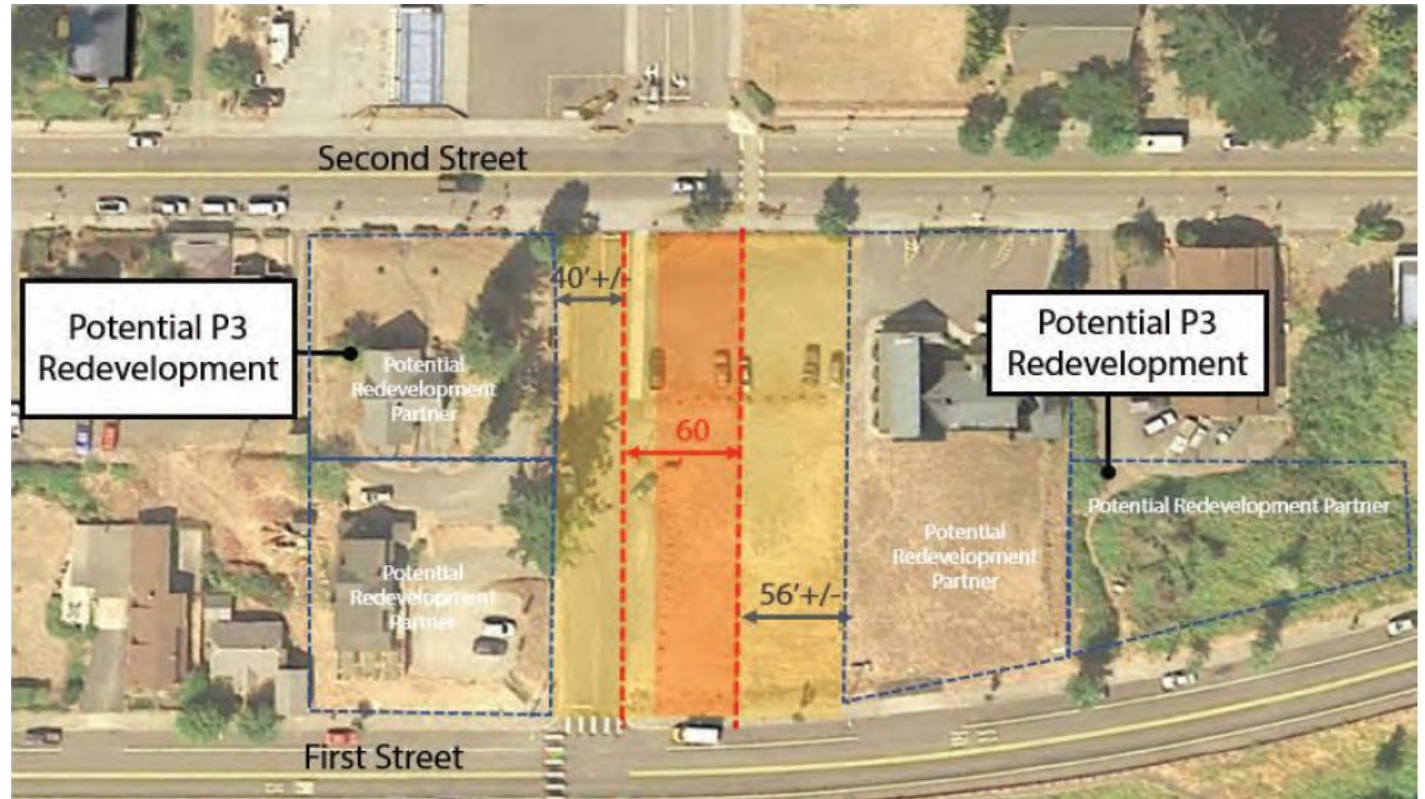


- Legend**
- Sanitary Sewer Manhole
 - Wastewater
 - ▭ Realignment Area
 - ▭ Tax Lots

Environmental



Conceptual Realignment Plan



Source: Stevenson Downtown Plan for Success, 2019

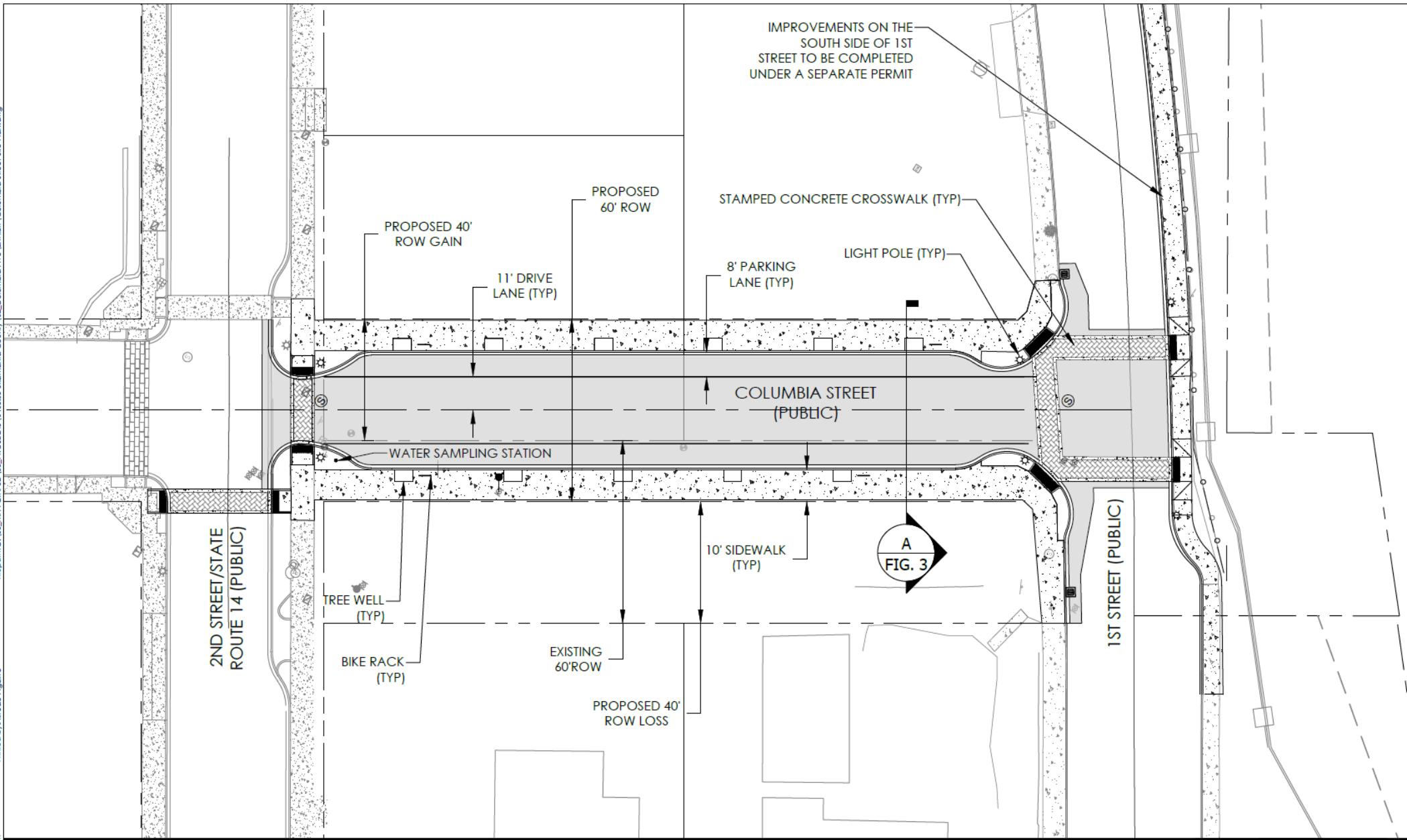


Figure 2
Site Plan
 Columbia Street Realignment
 Stevenson, WA

MAUL FOSTER ALONGI
 971.544.2139 (phone) | www.maufoster.com

This figure prepared as supplemental visual information only and should not be used for construction purposes. Only plan sheets approved, stamped and signed by a registered professional engineer in the state of governing jurisdiction shall be used for construction. Additionally, only plans approved by the applicable governing jurisdiction(s) shall be used for final construction unless otherwise expressly noted in writing by the engineer of record.

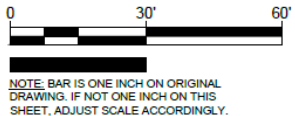
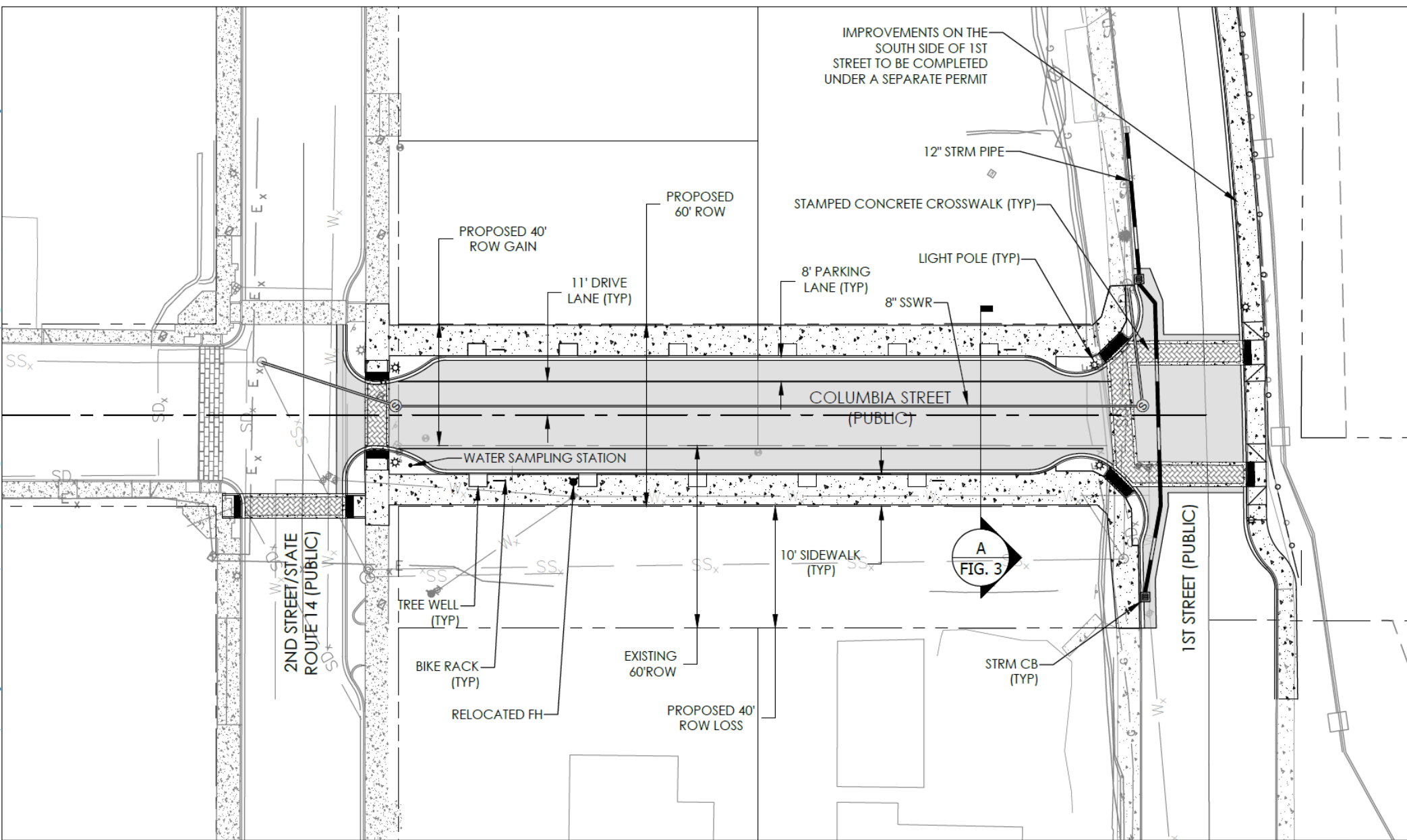
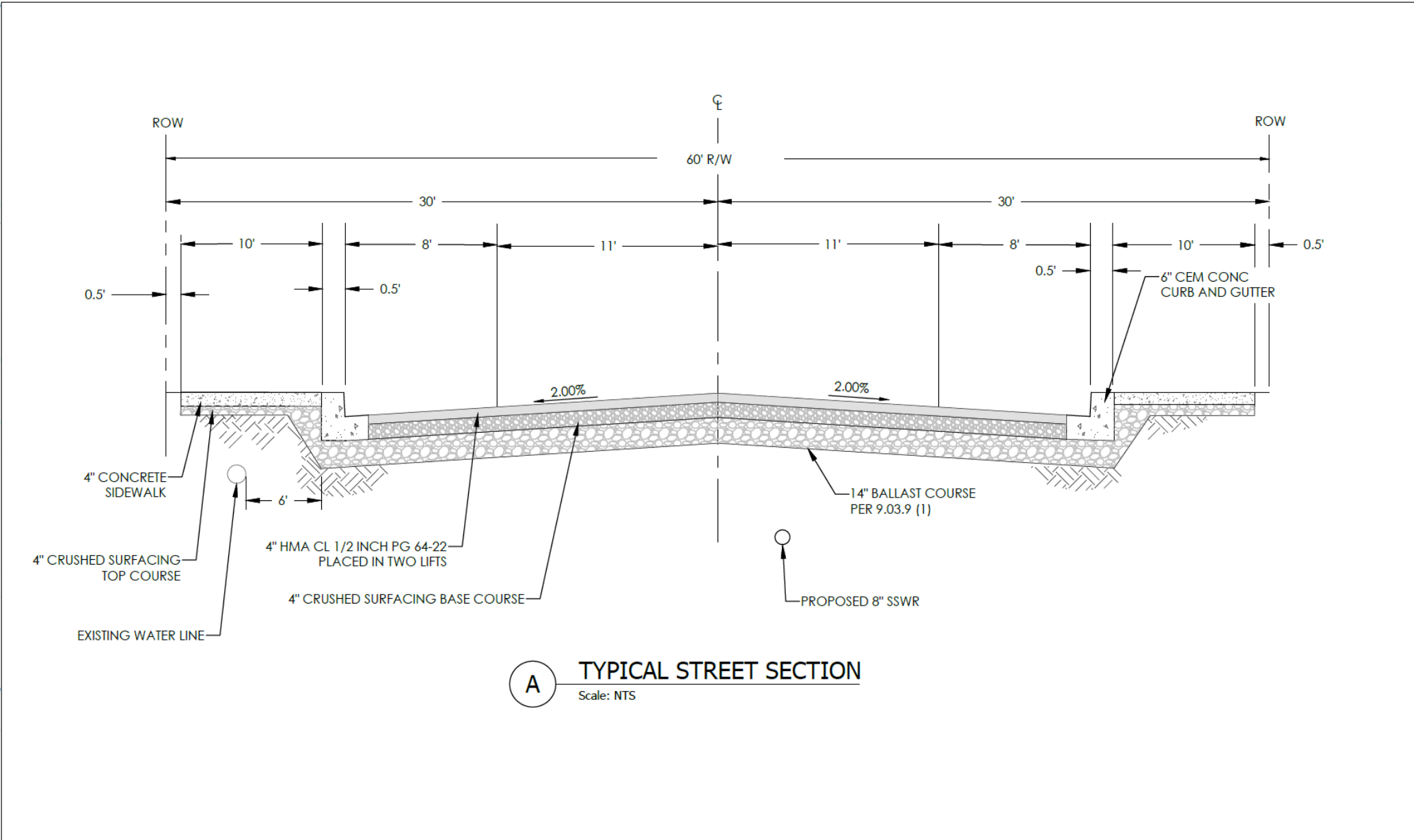


Figure 1
Site Plan
 Columbia Street Realignment
 Stevenson, WA



A TYPICAL STREET SECTION
Scale: NTS

Next Steps

- Additional environmental assessment
 - EPA funds
 - Washington Department of Ecology Integrated Planning Grant
- Application
- Outreach to surrounding property owners
- Implementation plan

SETH OTTO, AICP

Senior Planner

sotto@maulfoster.com

503.577.3268

BEN JOHNSON, AICP

Project Planner

bjohnson@maulfoster.com

206.556.2014



M A U L F O S T E R A L O N G I