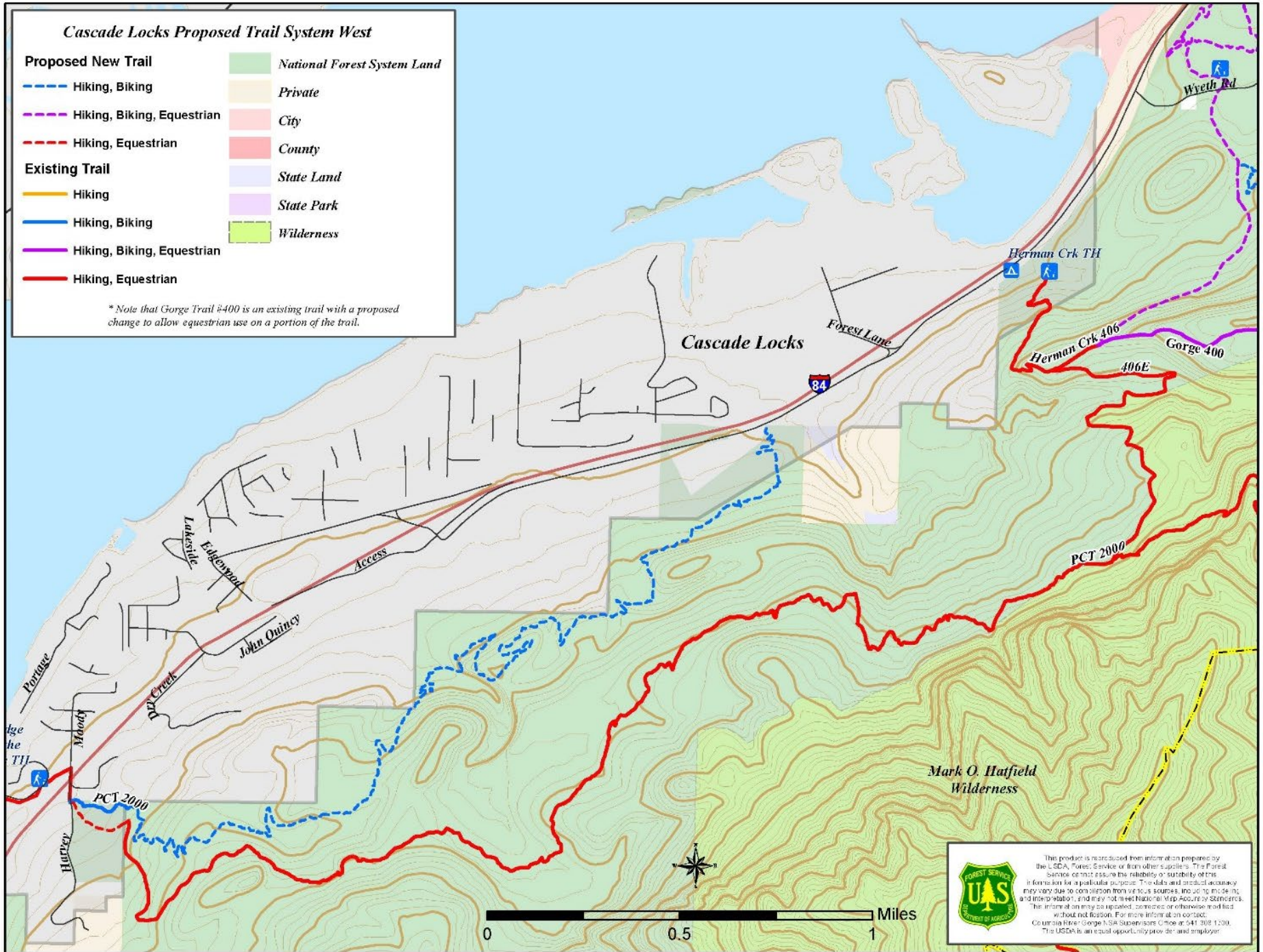


Figure 1. Cascade Locks Multi-Use Trail System (West)



This product is reproduced from information prepared by the USGS, Tides, Swales, or from other sources. The Forest Service cannot assume the reliability or suitability of this information for a particular purpose. The data and product accuracy may vary due to compilation from various sources, including metadata, and may not meet National Map Accuracy Standards. The information may be updated, corrected or otherwise modified without notice. For more information contact: Columbia River Gorge National Scenic Area, 541.308.1200. The USFS is an equal opportunity provider and employer.

Figure 2. Cascade Locks Multi-Use Trail System (East)

