

Skamani Visitor Report

Jan 1st, - May 31st, 2024



DATAFY

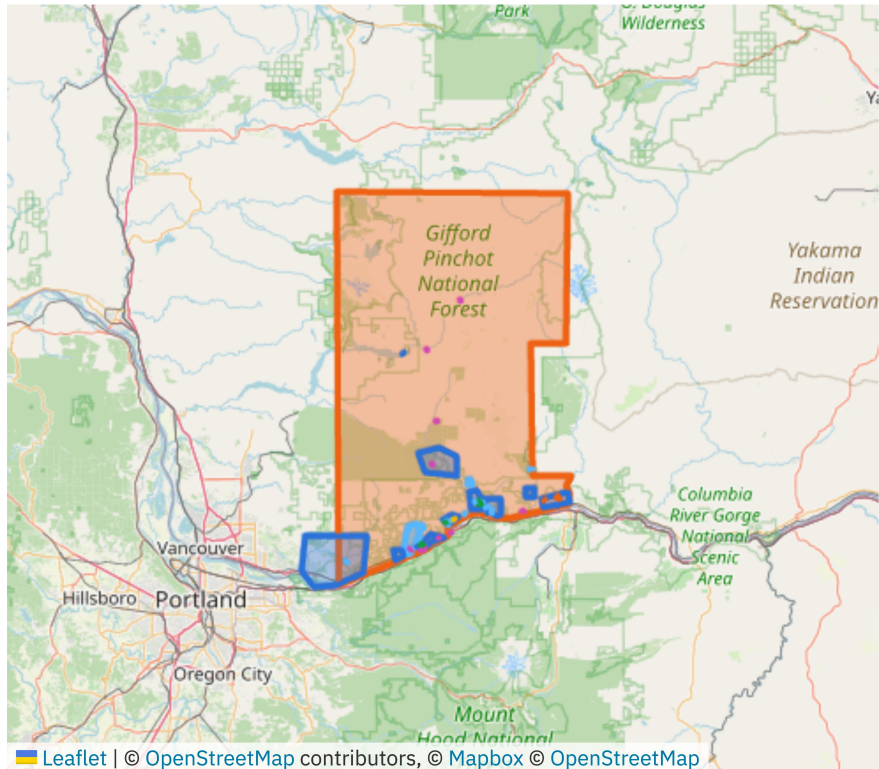


Skamani Visitor Report

Global Filters In-State Out-of-State Distance: 50 mi - 3,709 mi Dates: 1/1/24 - 5/31/24 ↔ Compare Dates: 1/1/23 - 5/31/23 Clusters: 2 Excluded POIs: All Included

Selected Clusters

Color by: Cluster



This report includes all clusters and POIs excluding external polygons

Dates: January 1, 2024 - May 31, 2024

Compared Dates: January 1, 2023 - May 31, 2024

Miles: 50+ Miles

Skamani Visitor Report

Global Filters

In-State

Out-of-State

Distance: 50 mi - 3,709 mi

Dates: 1/1/24 - 5/31/24

↻ Compare Dates: 1/1/23 - 5/31/23

Clusters: 2 Excluded

POIs: All Included

📍 Geo Data

↻ Compare Dates



Total Trips

209,859 Trips

↘ 29.7%



Visitor Days

482,063 Days

↘ 22.9%



Average Length of Stay

2.3 Days

↗ 0.2 Days

Trips by Length of Stay

📍 Geo Data

↻ Compare Dates

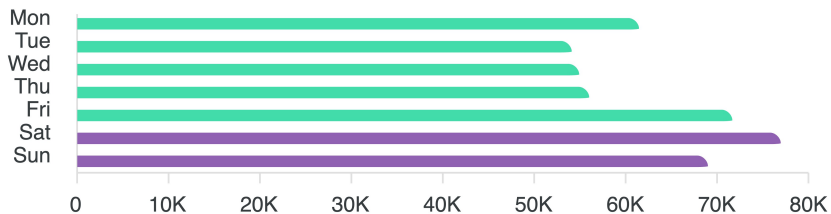
Leisure Mode Active



- 1 Day 65.4% ↗ 10.5%
- 2 Days 14.3% ↘ 1.2%
- 3 Days 8.92% ↘ 1.9%
- 4 Days 4.81% ↘ 2%
- 5 Days 2.47% ↘ 1%
- 6+ Days 4.11% ↘ 4.3%

Visitors by Day

📍 Geo Data

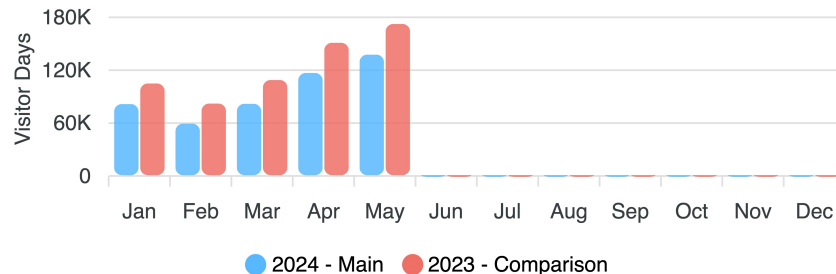


Number of Visitor Days

Monthly Volume by Visitor Days

📍 Geo Data

↻ Compare Dates



Skamani Visitor Report

Global Filters [In-State](#) [Out-of-State](#) [Distance: 50 mi - 3,709 mi](#) [Dates: 1/1/24 - 5/31/24](#) [↔ Compare Dates: 1/1/23 - 5/31/23](#) [Clusters: 2 Excluded](#) [POIs: All Included](#)

Top Spending by Destination

for 1/01/24 - 3/31/24 %↑/↓1/01/23 - 5/31/23

[📍 Spend Data](#) [↔ Compare Dates](#)

DMA	% Spend Share	Change in Share of Spend
Seattle-Tacoma	63.45%	+ 2.68%
Portland- OR	10.09%	+ 0.79%
Spokane	3.24%	+ 0.41%
Yakima-Pasco-R	2.9%	- 1.59%
Phoenix -Presco	1.16%	+ 0.54%
Los Angeles	1.09%	- 0.72%
Eugene	1.07%	- 0.77%
Orlando-Dayton:	0.92%	+ 0.33%
San Francisco-O.	0.91%	- 0.15%
Honolulu	0.89%	+ 0.1%

Length of Stay by Top DMAs

Leisure Mode Active

DMA	Avg Length of Stay	Share of Trips
Portland- OR	2.1 Days	18.68%
Seattle-Tacoma	2.3 Days	16.18%
Medford-Klamath Falls	3.2 Days	10.23%
Yakima-Pasco-RchInd-Knnwck	2.1 Days	10.15%
Spokane	2.6 Days	4.71%
Salt Lake City	2.7 Days	3.45%
Eugene	2.3 Days	3.35%

DMA Visitation

[📍 Geo Data](#) [↔ Compare Dates](#)

DMA	Share of Trips	% ↗ ↘
Portland- OR	18.34%	- 5.6
Seattle-Tacoma	13.74%	- 3.8
Yakima-Pasco-Rch	12.83%	+ 0.2
Spokane	4.6%	- 0.3
Medford-Klamath	3.44%	- 0.4
Eugene	2.41%	- 1.1
Los Angeles	2.21%	- 0.3
Boise	1.86%	- 0.1
Salt Lake City	1.19%	+ 0.0
San Francisco-Oak	1.16%	+ 0.1
Phoenix -Prescott	1.13%	+ 0.1

Skamani Visitor Report

Global Filters

In-State

Out-of-State

Distance: 50 mi - 3,709 mi

Dates: 1/1/24 - 5/31/24

↔ Compare Dates: 1/1/23 - 5/31/23

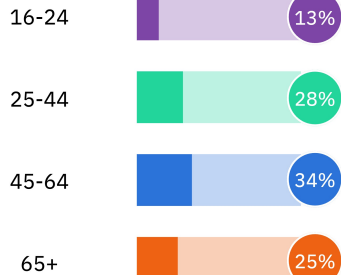
Clusters: 2 Excluded

POIs: All Included

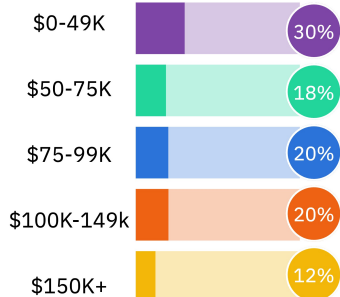
Demographics

🔍 Demographics

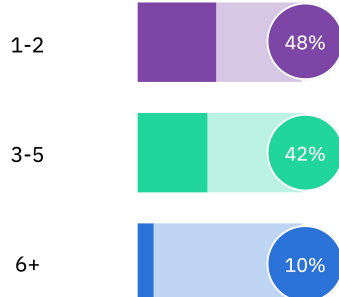
Age



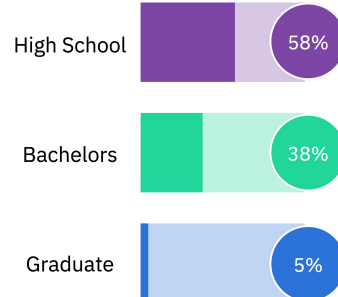
Income



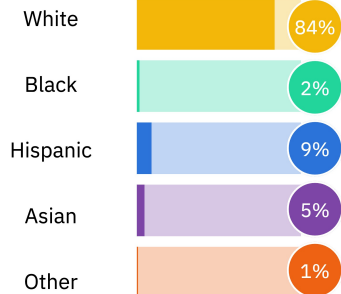
Household



Education Level



Ethnicity



Skamani Visitor Report

Global Filters

In-State

Out-of-State

Distance: 50 mi - 3,709 mi

Dates: 1/1/24 - 5/31/24

↻ Compare Dates: 1/1/23 - 5/31/23

Clusters: 2 Excluded

POIs: All Included

Cluster Visitation

📍 Geo Data

↻ Compare Dates

Cluster	Share of Total Trips	% ↕
Dining	28.62%	+ 8.1
Cities	21.57%	- 4.2
Lodging	15.74%	+ 2.4
County	12.5%	- 12.4
Golf	8.79%	+ 1.9
Hiking	6.05%	+ 1.4
Breweries & Distilleries	4%	+ 2.1
Wind & Water Sports	1.83%	+ 0.3
Arts & Culture	0.6%	+ 0.3
Wineries	0.25%	+ 0.1
Rafting	0.07%	+ 0.0

Daily Visitor Trends by Cluster

📍 Geo Data

5-Day Rolling Average

