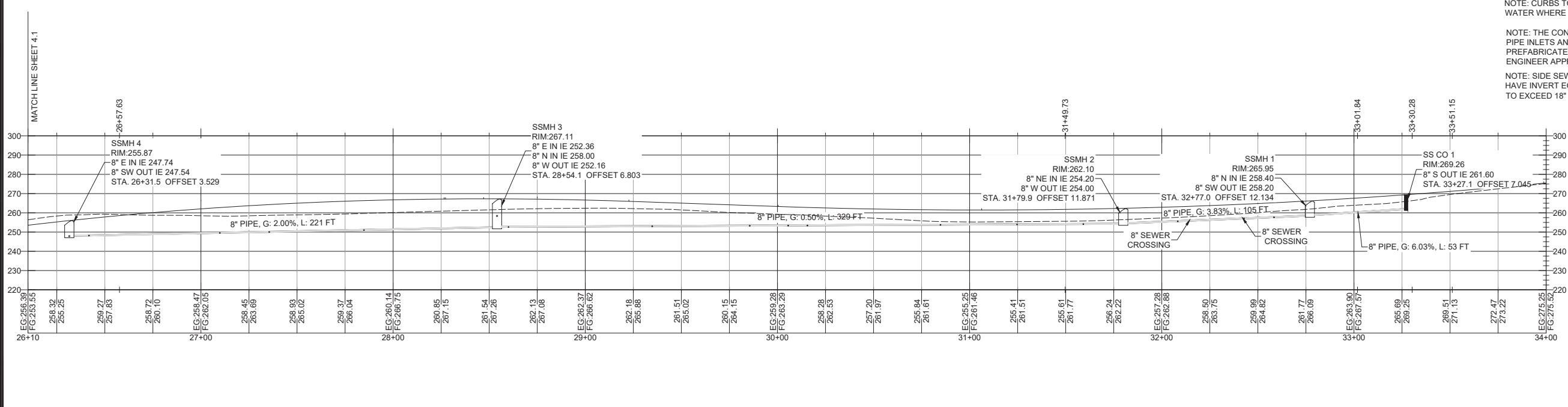


1 PINE STREET SEWER PROFILE
(STA 0+00-1+30)



2 ANDERSEN HEIGHTS SEWER PROFILE
(STA 6+10 - 13+22)



CONSTRUCT STANDARD 4" SANITARY SEWER SERVICE LATERAL PER CITY OF STEVENSON STANDARDS SEE LATERAL TABLE SHEET 4.0
CONSTRUCT 8" PVC SANITARY SEWER LINE PIPE BEDDING AND BACKFILL PER CITY OF STEVENSON STANDARDS

NOTE: CURBS TO BE STAMPED "S" FOR SEWER "W" FOR WATER WHERE SERVICES CROSS UNDER CURB.
NOTE: THE CONTRACTOR SHALL EXTERNALLY SEAL ALL PIPE INLETS AND OUTLETS USING EITHER A PREFABRICATED BOOTED SEAL, "KOR-N-SEAL", OR ENGINEER APPROVED EQUAL.
NOTE: SIDE SEWERS CONNECTING TO MANHOLES SHALL HAVE INVERT EQUAL TO OR ABOVE MAIN LINE CROWN NOT TO EXCEED 18" ABOVE MAIN SEWER INVERT

Pioneer Surveying & Engineering, Inc.
Civil/Structural Engineering and Land Planning
125 E. Simcoe Drive
Goldendale, Washington 98620
Phone (509) 773-4945, Fax (509) 773-6888, E-Mail pse@gorge.net.

PSE

3-19-2021
DUSTIN D. CONROY
STATE OF WASHINGTON
REGISTERED PROFESSIONAL ENGINEER

CHINDERE MOUNTAIN ESTATES
STEVENSON WA
ANDERSEN HEIGHTS DRIVE/PINE STREET SANITARY SEWER

No.	Date	Revisions
5.0	6-9-2021	SUBMITTED FOR REVIEW
4.0	6-1-2021	SUBMITTED FOR REVIEW
3.0	5-11-2021	SUBMITTED FOR REVIEW
2.0	3-19-2021	SUBMITTED FOR REVIEW
1.0	6-16-2020	SUBMITTED FOR REVIEW

SHEET NO.
4.2

SCALE: AS NOTED
JOB NO. **20-XX** REV. **0**