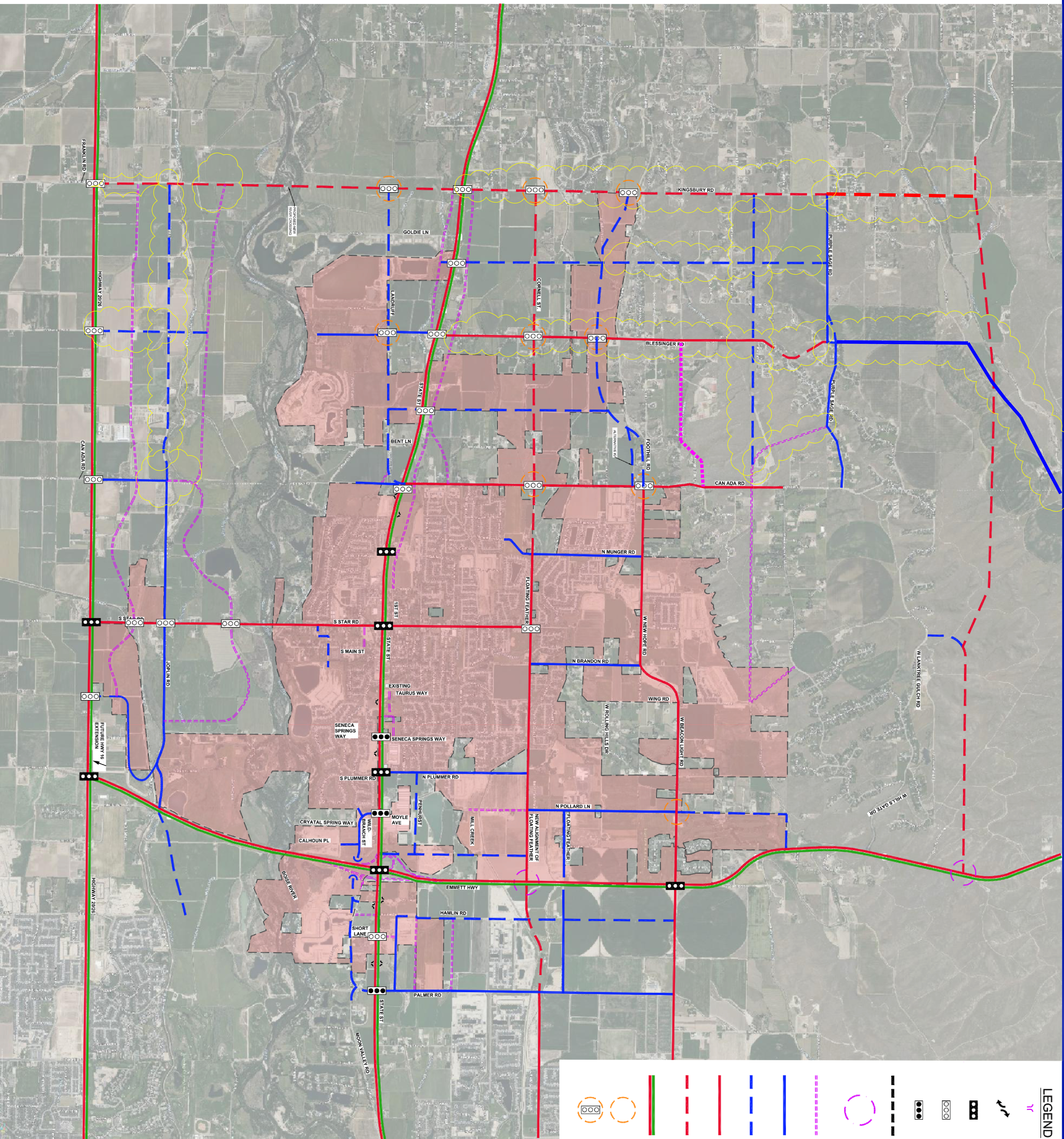




CITY OF STAR



LEGEND

- FULL ACCESS
- PROPOSED RIGHT IN / RIGHT OUT
- EXISTING SIGNAL LIGHT
- PROPOSED SIGNAL LIGHT
- LTD APPROVED FUTURE SIGNAL LIGHT
- STAR CITY LIMITS
- OVERPASS W/ FULL ACCESS TO HWY 16
- CONCEPTUAL ALIGNMENT PROPOSED FUTURE ROAD CLASSIFICATION TBD
- EXISTING COLLECTOR
- CONCEPTUAL ALIGNMENT PROPOSED FUTURE COLLECTOR
- EXISTING ARTERIAL
- CONCEPTUAL ALIGNMENT PROPOSED FUTURE ARTERIAL
- EXISTING STATE HIGHWAY
- ROUND ABOUT
- ROUND ABOUT / SIGNAL OPTION

NOTES:

1. MAP DEPICTS PROPOSED CONCEPTUAL ALIGNMENTS OF FUTURE COLLECTORS, ARTERIALS, AND ACCESS POINTS AND TRAFFIC SIGNALS.
2. FINAL LOCATION OF PROPOSED ROADS, DRIVEWAYS AND SIGNALS ALL SUBJECT TO REVIEW AND APPROVAL OF GOVERNMENT AGENCIES HAVING JURISDICTION.
3. PROPOSED ROAD ALIGNMENTS AND SIGNALS ARE SUBJECT TO BE MODIFIED DEPENDING UPON SPECIFIC DEVELOPMENT PROPOSALS.
4. LOCATE SIGNAL LIGHT AT HAMLIN ROAD OR SHORT LANE WITH APPROPRIATE RIGHT IN / RIGHT OUT.
5. RECLASSIFY PLUMMER ROAD AND POLLARD LANE BETWEEN BEACON LIGHT AND STATE STREET AS A MINOR ARTERIAL.
6. RECLASSIFY S. CALHOUN PLACE AS A COLLECTOR.
7. CLASSIFY FOOTHILL RD. AND NEW HOPE RD. WEST FROM CANADA RD. AS A MINOR ARTERIAL.
8. PEDESTRIAN CROSSING SIGNAL LOCATIONS TO BE DETERMINED ALONG STATE STREET CORRIDOR.
9. PROVIDE FOR FUTURE PARK & RIDE (P/R) LOCATIONS AT HWY 44 & 20/26.
10. UNDERPASS

ECONOMIC CORRIDORS ACCESS AND ROADWAY CONNECTION MANAGEMENT PLAN

APPROVED BY STAR CITY COUNCIL ON 12-15-20

REVISED AND APPROVED BY CITY COUNCIL ON 10-5-21

REVISED AND APPROVED BY CITY COUNCIL ON 2-21-23

