



Statement of Qualifications
City of Star Pathway Master Plan
August, 2023



On the covers:

Barber Park Pathways | Boise, Idaho

1 | INTRODUCTION



August 30, 2023

City of Star
C/O Shawn Nickel, City Planner
PO Box 130
10769 W. State Street
Star, Idaho 83669

Re: Professional Services for the Star Pathway Master Plan

Mr. Nickel and Selection Committee Members:

BRECKON landdesign [BLDi] is pleased to submit our Statement of Qualifications for the Star Pathway Master Plan. From the information presented in the RFQ, we understand that the scope of work for this project will include assessment of the City's existing pathway system (to include field investigation, review of existing drawings and specifications, and meeting with City administrators, staff and Committee members); digital mapping of all existing and planned pathway locations; and collaboration with City administrators, staff and Committee members to develop a final Master Plan document that will include analysis of all pathway components - types, locations, usage, signage, maintenance strategies, and more. We are ready to start working on your project immediately upon selection and our team can offer the City experience and service that can't be matched by other firms or teams.

- **Longevity:** Breckon Land Design has been completing successful public agency projects in Idaho since our inception in 2007, including projects in the City of Star and throughout Idaho. As Principal, I am involved in every project from conception to completion and our staff is dedicated to meeting and exceeding the expectations of our public agency clients.
- **Design Efficiency:** Breckon Land Design believes that successful planning and design starts with understanding realistic budget parameters and project scheduling. Our design professionals will recommend only cost-effective, viable solutions to provide the best possible value without compromising project quality. BLDi provides a unique blend of civil engineering and landscape architecture for a complete site design.
- **Specific Experience:** Breckon Land Design has recent, relevant experience working on pathway planning and design for public agency projects, including parks, schools and neighborhoods. The design team that we have assembled for the project includes master planning experts (BerryDunn) and transportation planners (Kittelsohn & Associates), and all hold active licenses in the State of Idaho. We understand the nature of public works projects and how to accomplish them efficiently.

Thank you for taking the time to review our qualifications. If awarded, BLD understands that we are the design professional of record and will work with the City to resolve conflicts as they arise, including cost change issues. We would be happy to answer any questions you may have or provide additional information about any of our past projects or services immediately upon request. We look forward to hearing from you.

Sincerely,

A handwritten signature in blue ink, appearing to read "Jon Breckon", is written over a horizontal line.

Jon Breckon, Principal
6661 N. Glenwood
Garden City, Idaho 83714

208.376.5153 x 101 | jbreckon@bldi.co | Tax ID #20-8085360 | Fax: 208.376.6528

Breckon Land Design, Inc.



2 | FIRM EXPERIENCE AND QUALIFICATIONS

BRECKON landdesign, Inc. [BLDi] is an Idaho S-Corporation that offers civil engineering, landscape architecture, land planning, and design services to public agency clients in Idaho and the western United States. Founded in January of 2007, the firm has since built a reputation for high-quality work that serves a diverse clientele. Our office is located in Garden City, Idaho. We are a veteran-owned small business and have completed successful projects with public agencies in Canyon County and throughout Idaho. Jon Breckon, ASLA, is the Principal and sole owner of the firm.

Doing things right adds value. Our practice is founded on strong communication, integrity, unrelenting quality control, and a commitment to creative innovation when it comes to achieving client goals. We understand that successful completion of public works projects requires open and honest communication with clients and public agencies, as well as the ability to develop cost-effective design solutions.

Our civil engineers and landscape architects maintain professional registrations in multiple states, including Idaho. Our staff of eleven consists of two licensed civil engineers, one civil engineer in training, three licensed landscape architects, three landscape architects in training, and two administrative support personnel. Landscape architects are active members of the American Society of Landscape Architects (ASLA) and the Council of Landscape Architectural Registration Boards (CLARB). Civil Engineers are active members of the American Society of Civil Engineers (ASCE) and the National Council of Examiners for Engineering and Surveying (NCEES).

PROFESSIONAL SERVICES:

Civil Engineering

- Preliminary & final plats
- Roadway/Pathway plans & profiles
- Domestic water systems
- Pressurized & gravity irrigation systems
- Pressurized irrigation pump stations
- Sanitary sewer septic systems & lift stations
- Permeable pavements
- Green stormwater infrastructure
- Stormwater Pollution Prevention Plans (SWPPP)

Landscape Architecture

- Schematic, preliminary, and final design drawings
- Pathways and wayfinding
- Planting, irrigation, and lighting plans with specifications
- Grading, drainage, and stormwater plans
- Erosion and sediment control plans
- Federal and state permitting
- Site design for ADA requirements

Integrated Site Design

- Design program development and verification
- Site analysis
- Design theming for planting, lighting, amenities, and signage

Community Facilitation

- Scheduling and facilitation of community meetings
- Press releases and written communications to address political and public policy issues

Design Implementation

- Construction bid documents
- Bid administration and negotiation
- Maintenance specifications
- Construction observation and administration

Land Planning and Master Planning

- Development feasibility studies
- Conceptual master plans
- Site planning and design
- Project management
- Critical areas identification
- Entitlement work
- Design guidelines

Waterscapes and Specialty Design

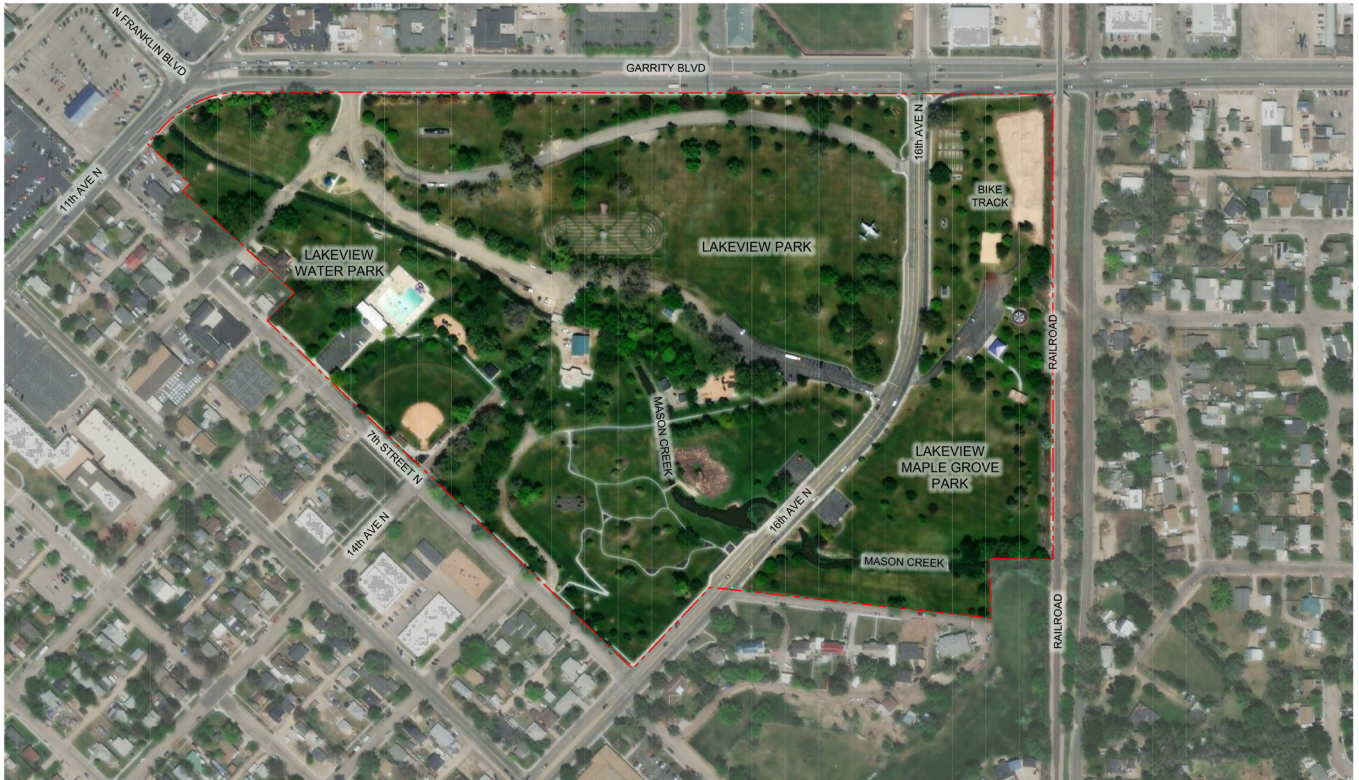
- Water features
- Swimming pools, splash pads, and water features
- Playgrounds
- Animal exhibit spaces
- Commemorative and fundraising plazas

2 | FIRM EXPERIENCE AND QUALIFICATIONS



BRECKON landdesign [BLDi] has worked with many different public agencies on projects ranging from small studies and planning exercises to large, institutional campus designs. We understand how to work effectively with multiple user groups to solicit input and translate ideas into concepts that are attainable. The projects included on the following pages represent just a small portion of our vast and varied planning experience for the public sector.

Nampa Parks Master Plan



BRECKON landdesign is working with BerryDunn, City of Nampa, Nampa Parks and Recreation and the Nampa Golf Commission to develop a new Parks Master Plan for the City of Nampa. The scope of work includes review of existing bike and pedestrian pathways, evaluation of existing parks and golf course properties, mapping of existing parks properties, meeting with community members and park/golf course users, and development of conceptual designs for Lakeview Park, Centennial Golf Course and Ridgecrest Golf Course.

Owner: City of Nampa

Project Lead: BerryDunn

Reference: Darrin Johnson, Parks Director
208.468.5858
johnsond@cityofnampa.us



Meridian Parks Master Plan and Master Plan Update

NOTES

- THIS IS A PRELIMINARY CONCEPT, INTENDED TO SHOW POSSIBILITIES FOR DEVELOPMENT OF THE MARGARET ALDAPE PARK SITE.
- NO SURVEY DATA WAS AVAILABLE AT THE TIME THIS CONCEPT WAS PREPARED. BASE INFORMATION WAS COMPILED FROM EXISTING BOUNDARY DATA AND AERIAL PHOTOGRAPHY.
- THIS PRELIMINARY CONCEPT HAS NOT YET BEEN PRESENTED IN A PUBLIC FORUM, AND DID NOT UNDERGO AN INDIVIDUAL PUBLIC INPUT PROCESS.
- ROADS AND PARKING AREAS MAY BE PAVED OR SURFACED WITH PERMEABLE PAVERS OR COMPACTED GRAVEL, TO BE DETERMINED.

PUBLIC ART

- ART WILL BE FOCUSED PRIMARILY ON ALDAPE FAMILY HISTORY, BASQUE CULTURAL HERITAGE, LOCAL WILDLIFE AND RELATED THEMES
- ART ELEMENTS WILL BE INTEGRATED WITH PARK ARCHITECTURAL FEATURES
- ART WILL BE PLACED SO AS TO CREATE A SENSE OF DISCOVERY FOR PARK VISITORS



Design Concept

Margaret Aldape Park
Meridian Parks & Recreation
Meridian, Idaho 83642



In association with GreenPlay, LLC (now BerryDunn) BLDi completed this year-long master planning effort for the City of Meridian Parks and Recreation Department. This process included an assessment of the City's existing parks and pathways, community meetings and surveys, development of an urban forestry management plan and master pathways plan, and conceptual designs for three proposed regional parks; West Meridian Regional Park, a 77-acre park in South Meridian, and Margaret Aldape Park.

Owner: Meridian Parks and Recreation

Project Lead: BerryDunn

Reference: Steve Siddoway, Parks & Recreation Dir.
208.888.3579
recreation@meridiantcity.org

Thousand Springs State Park & Billingsley Creek Campground



BRECKON landdesign worked closely with the Idaho Department of Parks and Recreation, the National Park Service and multiple other public agencies to develop a comprehensive master plan for this new 200-acre state park and campground facility. The scope of work for the master planning portion of the project included conceptual site planning, public meeting and stake holder presentations, cost estimating and project phase strategies. Following master planning, our team completed design, construction documents and construction administration for civil engineering and landscape architecture. Upon final completion, the full-service, 50-unit campground will feature full hookups, emergency vehicle access, a water access point with fishing dock, a 20-acre arboretum, multi-use amphitheater, day-use area, RV, group and tent camping sites, **and approximately 12,000 feet of multi-use pathway that is integrated with Hagerman's existing pathway network.** The project is being completed in phases, with phase one of the asphalt pathway system completed in 2019, the visitor's center and adjacent site completed in 2021, and the campground to be completed in the Fall of 2023.

Owner: Idaho Department of Parks and Recreation

Project Lead: Breckon Land Design

Reference: Melanie Schuster, Dev. Bureau Chief
208.514.2456
melanie.schuster@idpr.idaho.gov



Barber Park Planning and Improvements



BRECKON landdesign was contracted by Ada County Operations to work with them on planning and design for a multi-phased project for improvements to Barber Park in Boise. The scope of work includes planning, phasing strategy, design, bidding and construction administration for parking lot, plaza and multi-use pathway improvements, enhancements to the existing boat/raft launching area, two new bridges for vehicle and pedestrian use, and a new fishing pier on the Boise River. Several multi-use pathways in the park were improved with new Stalok® Paving Material, which resists weathering and provides increased traffic resistance over asphalt or concrete paving. This project involved extensive coordination with multiple public agencies due to the sensitive location along the Boise River and within the existing flood plain. The improvements were designed to be completed in phases to maximize the available budget and keep park facilities available for use during the busy season. This project was partially funded through the American Rescue Plan Act (ARPA) and complies with all ISPWC requirements.

Owner: Ada County Operations

Project Lead: Breckon Land Design

Reference: Scott Koberg, Parks & Waterways Director
208.860.9913
skoberg@adacounty.id.gov

2 | FIRM EXPERIENCE AND QUALIFICATIONS



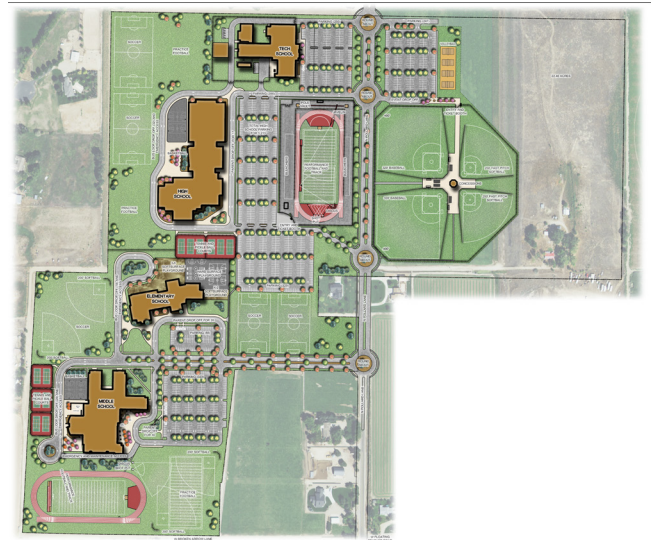
Star Schools Master Planning

BRECKON landdesign teamed with Lombard/Conrad Architects to complete a comprehensive master plan for Star Schools in the West Ada School District that included site planning and development for a new middle school along with future plans for an elementary, high school, and technical training facility.

In addition to building locations and overall site design for pedestrian and vehicular circulation, the master plan incorporated a wide range of athletic facilities to serve students of all ages. These included competition venues and practice fields for softball, baseball, football, and soccer; multiple track and field facilities, including a stadium area; and courts for tennis, pickleball, basketball, and volleyball. Age-specific playgrounds were also designed to serve the elementary school.

Site circulation and parking elements were carefully planned to meet the daily requirements of the schools and also handle capacity events at all recreation facilities.

Owner: West Ada School District
Project Lead: Lombard/Conrad Architects
Reference: Mark Heazle, LCA
208.345.6677
markh@lcarch.com



College of Idaho Master Plan

BRECKON landdesign worked with Hummel Architects and College of Idaho administrators and staff to develop a comprehensive Campus Master Plan. The scope of work included production of a complete site inventory of all irrigation system components, parking and vehicular access, pedestrian pathways and circulation routes, a campus-wide tree inventory and mapping, a needs assessment and recommendations for current and future site improvements to accommodate projected growth, and development of recommendations for campus standards and future tree planting and management. The Marty Holly Athletic Center was the first project implemented as part of the completed master plan.

Owner: College of Idaho
Project Lead: Hummel Architects
Reference: Jack Cafferty, College of Idaho
208.459.5168 x 49
jcafferty@collegeofidaho.edu



Specific Relevant Experience

BRECKON landdesign has worked with many different public agencies and private clients on development of Master Plans, ranging from small planning studies and cost estimates to years-long, extensive planning and phasing strategies for capital improvements for school districts, municipal agencies and more.

Meridian Parks Master Plan Update (2021)	Star Schools Master Plan (2015)
Margaret Aldape 78-Acre Park Master Plan (2015)	Frontier Town Water Park Master Plan (2017)
South Meridian 77-Acre Park Master Plan (2015)	Wilder Schools Master Plan (2010 and 2015)
West Meridian 48-Acre Park Master Plan (2015)	St. Paul's Catholic School Master Campus Plan (2023)
College of Idaho Campus Master Plan (2014)	World Center for Birds of Prey Master Plan (2010 & 2018)

Project Criteria

Documentation of Existing Conditions: Our team has completed many projects requiring careful and extensive documentation of existing facilities and conditions on project sites. Our recent work at Barber Park is an excellent example of designing for compatibility with existing conditions.

Multiple Agency Coordination: Many of our projects require coordination with multiple public agencies. Our current work at Thousand Springs State Park has involved coordination with the National Park Service, Department of Environmental Quality, Idaho State Parks and Recreation, Idaho Fish & Game, Idaho Division of Building Safety, Idaho Transportation Department and others.

Community Engagement: Each member of our team has recent, relevant experience working with community groups to solicit ideas and opinions during meetings and open houses. This involves production of conceptual graphics and display boards, presentations to various user groups, community surveys, and more.

System Inventory and Mapping: We have an ArcGIS mapping specialist on the team that we have worked with on the Meridian and Nampa Parks Master Plans, and all of our design professionals have extensive experience with inventory of existing site components.

Maintenance Plans: Long-term success of our projects is very important to us and we work together with clients to ensure that they have the information and equipment needed to maintain their site components and keep them in use.



Insurance Coverage

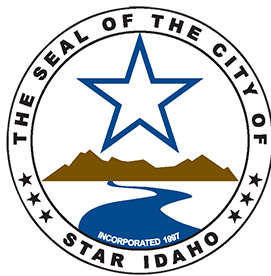
Carrier: Great American Insurance
Agent: Aubrey Archuleta, The Hartwell Corporation | aubrey@thehartwellcorp.com
Coverage: \$2,000,000 each claim and aggregate limit

3 | DESIGN TEAM



BRECKON landdesign [BLDi] has The team that we have assembled for the Star Pathway Master Plan project has recent experience working together on public agency projects and all have active licenses in the State of Idaho.

TEAM MEMBER	DESIGN DISCIPLINE	ROLES AND RESPONSIBILITIES
Jon Breckon, ASLA Project Manager	Master Planning and Landscape Architecture	Overall project oversight, contract negotiations, planning and design, community outreach
Mary Wall, PE, ASCE Claire Smarda, PE, ASCE	Master Planning and Civil Engineering	Planning and design, community outreach, engineering
Celeste Penny, ASLA Landscape Architect	Master Planning and Landscape Architecture	Planning and design, existing condition assessment, pathway mapping
Art Thatcher, BerryDunn Dave Peterson, BerryDunn	Master Planning and Cost Analysis	Capital Improvement Plan development, cost estimating, community outreach
John Ringert, Kittelson & Assoc. Jamie Markosian, Kittelson & Assoc.	Transit Planning	Greenbelt and roadway coordination



- Mayor
- City Council and Staff
- Transportation & Pathway Committee
- Community Members



Jon Breckon, PLA | Project Lead
Mary Wall, PE | Civil Engineering
Celeste Penny, PLA | Landscape Architecture
Claire Smarda, PE | Civil Engineering

Art Thatcher, Planning Specialist
Dave Peterson, Planning Specialist
BerryDunn

John Ringert, Transit Specialist
Jamie Markosian, Transit Specialist
Kittelson & Associates



Jon Breckon, ASLA, CLARB

Owner, Firm Principal | jbreckon@bldi.co

Jon Breckon has over 25 years of experience in the planning, design, and construction of public and private facilities. As principal, he oversees all operations and quality control for the firm at large. Jon's professional experience spans a wide range of project types with an emphasis on large-scale projects that have involved master planning for complex design considerations. Jon works closely with agency planning and public works departments during all phases of a project to guide clients through programming and design, address review comments, and gain project approvals.

key skills + qualifications

education

Bachelor of Science in Landscape Architecture, University of Idaho

licensure + memberships

ID, OR, WA, CA, NV, MT, WY, UT, AZ, CO, NM, TX, OK, ND, MN, WI, OH, NY, MD, MI, SC, IA, VA

- » Council of Landscape Architect Registration Boards (CLARB) Certified
- » American Society of Landscape Architects (ASLA)
- » Pool and Hot Tub Alliance Advanced Pool Builder Professional
- » Idaho State Board of Landscape Architects, 2012-Present

relevant projects

2021 Meridian Parks Master Plan Update (with BerryDunn) *Meridian, Idaho*
 2014 Meridian Parks Citywide Master Plan (with BerryDunn) *Meridian, Idaho*
 Margaret Aldape 78-acre Regional Park 2015 Master Plan *Meridian, Idaho*
 South Meridian 77-acre Regional Park 2015 Master Plan *Meridian, Idaho*
 West Meridian 48-acre Regional Park 2015 Master Plan *Meridian, Idaho*
 Thousand Springs State Park / Billingsley Creek Master Plan *Hagerman, Idaho*
 Star Schools Master Plan *Star, Idaho*
 Wilder Schools Master Plan *Wilder, Idaho*
 Barber Park Plaza and Pathway Improvements *Boise, Idaho*
 Barber Park Pathway and Pier Upgrades *Boise, Idaho*
 Willowbridge Event Center *Ada County, Idaho*
 Peregrine Fund/World Center for Birds of Prey Master Plan *Boise, Idaho*
 College of Idaho Campus Master Plan *Caldwell, Idaho*
 Hugh Nichols Public Safety Campus *Nampa, Idaho*
 Idaho Department of Fish & Game Region 3 Office *Nampa, Idaho*
 City of Boise On-Call Projects *Boise, Idaho*
 City of Twin Falls On-Call Projects *Twin Falls, Idaho*
 Ada County Highway District On-Call Projects *Ada County, Idaho*
 West Ada School District On-Call Projects *Meridian, Idaho*
 Frontier Park Irrigation Improvements *Twin Falls, Idaho*
 Gooding Fire Station *Gooding, Idaho*
 OCTC Fire Station Addition *Kuna, Idaho*
 Boise Fire Station No. 4 and No. 8 *Boise, Idaho*
 Meridian Fire Station No. 5 *Meridian, Idaho*
 Eagle Fire Station No. 3 *Eagle, Idaho*
 Ada County Jail Expansion *Boise, Idaho*
 City of Moscow Police Station *Moscow, Idaho*
 White Pine County Justice Center Complex *Ely, Nevada*



key skills + qualifications

education

licensure + memberships

relevant projects

Mary Wall, PE, ASCE

Senior Civil Engineer | mwall@breckonld.com

Mary Wall has over 39 years of civil engineering experience that ranges from on-site sewage disposal design and project management for land development projects, to full site development packages involving grading, drainage, and site utility design. Most of Mary's projects involve several facets of civil engineering, including roadways, sewer systems, water systems, drainage, right-of-way design, as well as pressurized irrigation, gravity irrigation, and pump system design. She has served as project manager on a wide variety of subdivision projects and several on-site sewage disposal systems.

Bachelor of Science in Civil Engineering, University of Arizona

Oregon, Idaho, California, Nevada

- » American Society of Civil Engineers (ASCE)
- » National Council of Examiners for Engineering and Surveying (NCEES)

Barber Park Pathway and Parking Improvements, *Ada County, Idaho*
 Thousand Springs State Park / Billingsley Creek Master Plan *Hagerman, Idaho*
 Thousand Springs State Park / Billingsley Creek CG *Hagerman, Idaho*
 Gooding Fire Station *Gooding, Idaho*
 Mary McPherson Elementary Improvements *Meridian, Idaho*
 Shoshone Falls Subdivision *Nampa, Idaho*
 River Pointe Subdivision *Middleton, Idaho*
 Headquarters Subdivision *Eagle, Idaho*
 Bellemeade Subdivision *Eagle, Idaho*
 Harvest Creek Subdivision *New Plymouth, Idaho*
 Sweetwater Carwash *Meridian, Idaho*
 Ralstin Flexspace *Meridian, Idaho*
 Spurwing Townhomes Subdivision *Meridian, Idaho*
 Gowen Field Building 665 Parking *Boise, Idaho*
 Lavender Heights Subdivision *Meridian, Idaho*
 Happy Valley Subdivision *Canyon County, Idaho*
 Allure Subdivision *Meridian, Nevada*
 Grover Street Townhome PUD *Boise, Idaho*
 Visser's Landing 40 acre Subdivision *Canyon County, Idaho*
 Solar Feasibility Study *Duck Valley Indian Reservation, Idaho*
 Municipal Sewage System Rehabilitation *Seneca, Oregon*
 Municipal Sewage System Rehabilitation *Mt. Vernon, Oregon*
 Rue Anne Acres 52-acre Subdivision *Canyon County, Idaho*
 Scotty's Castle HVAC Effluent Disposal System *Death Valley, California*
 Van Hook Subdivision *Mountrail County, North Dakota*
 Heather Glen 200-acre Estates *Placer County, California*
 Outlook at Indian Hill Subdivision *Auburn, California*
 Pinon Water and Sewer System *Pinon, Arizona*



Celeste Penny, ASLA

Landscape Architect | cpenny@breckonld.com

Celeste has been with the firm for over five years and has worked with private and public agency clients throughout Idaho. An experienced and versatile designer with a broad skill base, Celeste's projects include swimming pools and water feature design, commercial and residential projects, grading and drainage, and a detailed knowledge of native plants and irrigation design. Celeste is also experienced with public agency and public works projects and understands how to guide projects through permitting and entitlements to achieve a successful outcome. She has played an integral role in the planning and design of numerous public safety projects, including law enforcement and corrections facilities.

key skills + qualifications

education

Master of Science in Landscape Architecture, University of Idaho
Bachelor of Science in Landscape Architecture, University of Idaho
Idaho

licensure + memberships

- » American Society of Landscape Architects (ASLA)
- » Montana Certified SWPPP Preparer
- » Pool and Hot Tub Alliance Advanced Pool Builder Professional

relevant projects

Nampa Parks Master Plan *Boise, Idaho*
Meridian Parks Master Plan *Meridian, Idaho*
Thousand Springs State Park *Hagerman, Idaho*
Barber Park Improvements *Boise, Idaho*
Ada County Jail Expansion *Boise, Idaho*
Ada County Sheriff's Office Security Improvements *Boise, Idaho*
City of Moscow Public Safety Building *Moscow, Idaho*
Idaho State Police Building *Driggs, Idaho*
Taft Elementary School *Boise, Idaho*
Swan Falls High School *Kuna, Idaho*
Expo Idaho Horse Stables Removal *Boise, Idaho*
State of Idaho Fountain Design *Boise, Idaho*
Bingham County Judicial Center Jail Addition *Blackfoot, Idaho*
Bonneville County Judicial Center Addition *Idaho Falls, Idaho*
Whitney Baptist Church Site Improvements *Boise, Idaho*
Homedale High School Improvements *Homedale, Idaho*
Jerome Elementary *Jerome, Idaho*
Washington County Courthouse Improvements *Wilder, Idaho*
Wassmuth Center Improvements *Boise, Idaho*
Horizon Elementary Site Improvements *Boise, Idaho*
Mary McPherson Elementary Addition *Meridian, Idaho*
White Pine County Justice Center *Ely, Nevada*
Idaho Central Credit Union *Multiple Locations, Idaho*
O'Reilly Auto Parts Stores *Multiple Locations, USA*
Teton Mesa Apartments *Idaho Falls, Idaho*



key skills + qualifications

education

licensure + memberships

relevant projects

Art Thatcher, MPA, CPRP | BerryDunn

Planning Specialist | Art.Thatcher@berrydunn.com

Art has 30 years of experience in public parks and recreation operations, programming and administration, volunteer board leadership, facility design and operations, and community engagement. Art has concentrated on strategic and master planning, civic engagement and comprehensive planning, operations and facility management planning, outdoor adventure recreation development and programming, and community engagement facilitation. He is an expert in working with adventure-based communities, including those that manage beaches and waterfronts as part of their parks and recreation systems, and communities that rely on outdoor and adventure recreation as economic drivers.

Masters of Public Administration, Old Dominion University
Bachelor of Science, Christopher Newport University

» Certified Parks and Recreation Professional, National Recreation & Parks Association (MRPA)

Nampa Parks Master Plan *Nampa, Idaho*
Meridian Parks Master Plan *Meridian, Idaho*
Parks and Recreation Master Plan Update *Post Falls, Idaho*
Parks and Recreation Master Plan *Chelan, Washington*
Recreation and Parks Master Plan Update *Amherst, New York*
Sports Fields Use Study *Arlington County, Virginia*
Parks and Recreation Master Plan *Dublin, California*



key skills + qualifications

education

licensure + memberships

relevant projects

Dave Peterson, PLA | BerryDunn

ArcGIS Specialist | Dave.Peterson@berrydunn.com

Dave is a Senior Consultant in BerryDunn's Park, Recreation and Libraries Practice, and believes that access to quality parks and recreation is an integral part of a healthy community. He is a certified and licensed landscape architect with deep experience in master planning and GIS mapping. He enjoys developing lasting relationships with clients and helping them create impactful and implementable solutions. Throughout his career, Dave has completed over 120 parks and recreation master plan projects, has published a number of articles in industry publications, and regularly speaks at professional conferences on his work.

Masters of Science in Exercise and Sports Science, University of Arizona
Bachelor of Science in Landscape Architecture, Colorado State University
Bachelor of Science in Education, University of Nebraska

» Colorado Parks and Recreation Association (CPRA)
» National Recreation and Parks Association (NRPA)

Nampa Parks Master Plan *Nampa, Idaho*
Meridian Parks Master Plan *Meridian, Idaho*
Parks and Recreation Master Plan Update *Post Falls, Idaho*



**key skills
+ qualifications**

education

**licensure
+ memberships**

relevant projects

John Ringert | Kittelson & Associates

Transportation Specialist | jringert@kittelson.com

John brings 33 years of experience in transportation planning, traffic operations, pedestrian and bicycle planning and design, traffic design, and traffic/safety studies for corridors and intersections. Planning projects have ranged from regional transportation plans to corridor plans, access management plans, and parking plans. John has also prepared the traffic signal design plans for over 100 traffic signals, roadway and intersection widening plans, and prepared signal timing and transit signal priority settings for traffic signals. He capably combines planning concepts with engineering principles and incorporates multimodal best practices into constructible designs that are cost effective to build.

Masters of Science in Traffic/Transportation, Texas A&M University
Bachelor of Science in Civil Engineering, University of Idaho

Idaho, Alaska, California, Oregon, Washington
» Member, Institute of Transportation Engineers
» ACEC of Idaho

US 20/26 Star Road to Middleton Road *Star, Idaho*
8th Street Southbound Conversion & Bicycle Improvements *Boise, Idaho*
Downtown Boise Multi-Modal Transportation Plan *Boise, Idaho*



**key skills
+ qualifications**

education

**licensure
+ memberships**

relevant projects

Jamie Markosian, PE | Kittelson & Associates

Transportation Specialist | jmarkosian@kittelson.com

Jamie brings over seven years of experience as a project manager, design lead/project engineer, project analyst, task/discipline lead for roadway and intersection design, transportation planning, pedestrian/bicycle planning, transportation safety analyses and traffic related designs and studies. Jamie is proficient in traffic analysis and transportation planning projects ranging in scope from the development of long range Capital Improvement plans, to corridor studies, to intersection concept reports, to micro-simulation modeling of networks, and more. Jamie has served as project manager for several pathway and bikeway planning projects in Southwest Idaho.

Masters of Science in Civil Engineering, University of Wisconsin-Madison
Bachelor of Science in Civil Engineering, Utah State University

Idaho
» Member, Institute of Transportation Engineers
» American Society of Civil Engineers (ASCE)

City of Star Greenbelt Planning *Star, Idaho*
Cassia Street Bikeway Design *Boise, Idaho*
Shoshone Street Bikeway Design *Boise, Idaho*

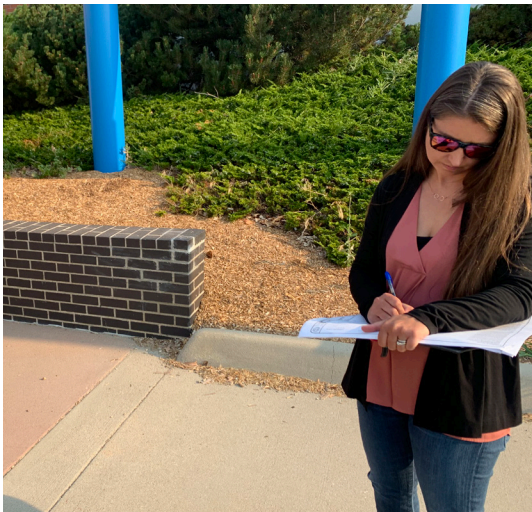
4 | PROJECT APPROACH



Management Techniques and Methods

Our Project Management strategy is based on:

- Commitment - to our clients, to excellence in service, and to quality of the final product.
- Technical Competence - through experienced gained on diverse projects, ongoing development of individual team members, and an innovative approach to design.
- Clear Communications - that are consistent and professional, and that represent client needs and goals while addressing technical, regulatory, and budget considerations.



Initial Kick-Off Meeting: We would like to begin the process by facilitating an initial meeting with the City's Team that includes as many participants as possible - the Mayor, City Council, selected City Staff and the Transportation and Pathway Committee. The purpose of this meeting is to gain an understanding of the planning work that has taken place to date, establish the City's short and long-term goals for the pathway planning process, and discuss potential challenges and opportunities for existing and potential pathway sites.

Existing Site Assessments: During this process we will physically review site constraints and potential opportunities for each existing and proposed pathway site, research existing conditions relating to the natural environment, existence of utilities and services, transportation and access, agency regulations, easement and right-of-way conditions, storm water management & erosion control requirements, and other

issues which will affect site planning. We will analyze facility maps, previous studies, and other information that may be available for each site. These efforts will help us assess the natural drainage pattern of each site; determine condition, location, and capacity of available infrastructure and utility corridors; and identify characteristics unique to each site that might present challenges for design and development.

AHJ Coordination: After an analysis of existing documents and on-site assessment of current and potential future pathway sites, we will contact the public agencies that may be impacted by current or future pathways to determine their requirements for development at those sites. This will include, but may not be limited to, Ada and Canyon Highway Districts, irrigation companies, Idaho Transportation Department, West Ada School District and others. Each agency's specific requirements will be included in the final Master Plan.

Determine/Refine Project Objectives: After an analysis of site features, constraints, and regulatory requirements, we work with the City and Pathways Committee to establish project design parameters. Project objectives will consider budget and schedule as well as short and long-term usage objectives for each project site. .

Mapping: Utilizing the City's existing CAD map as a starting point, our design professionals will update the existing map based on results of on-site assessments and develop the three separate maps identified in the RFQ: Pathway Types, Pathway Jurisdictions and Pathway Materials. These will be produced in digital and large-format prints.

Pathway Sections and Amenities: Our design professionals will develop designs for typical sections of the four pathway types - Community, Greenbelt, Highway and Natural, and work with City staff and Committee Members to determine the desired features and materials used for each specific pathway type. Concurrent with pathway section design, we will work with you to discuss the types of amenities needed at each pathway location and develop a conceptual amenities plan for submission to the City and Pathway Committee.

4 | PROJECT APPROACH

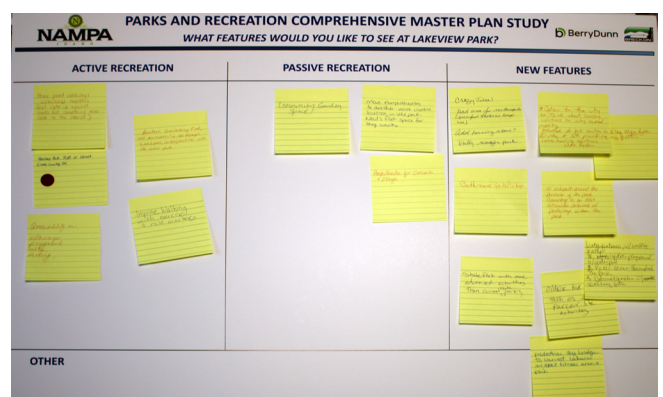
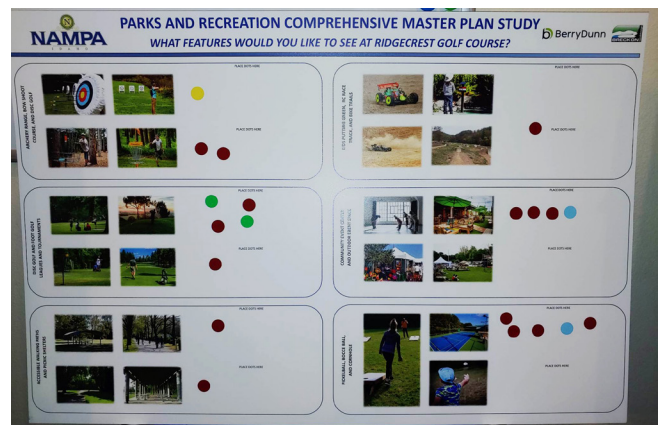
Public Outreach: Following City and Committee review and approval of proposed pathway sections and amenities, our design professionals will facilitate at least two community open houses for the purpose of soliciting input from community members and potential users on proposed locations, pathway types and amenities. Digital and printed conceptual graphics of proposed amenities, maps and pathway systems will be produced to give attendees a clear understanding of the planning process to date and what will be incorporated into the final Master Plan. Another possible strategy is to present information and solicit input utilizing the City's website - this may appeal to participants that can't attend open houses or are reluctant to share their opinions publicly. After the open houses and website input, our team will develop a detailed summary of each meeting with a list of attendees, summary of discussion topics and ideas/issues solicited from the community.

Maintenance Plan: When the locations, specific types of pathways and materials used for each are clearly defined, we will proceed with development of specific maintenance plans for each pathway type. The maintenance plans shall include instructions for daily maintenance, routine maintenance, periodic maintenance and long-term maintenance requirements. The maintenance plans will include specific tasks for each pathway type that will help keep the pathways safely in use for the long-term.

Capital Improvement Plan: When all aspects of the proposed Pathway plan are identified, our planning and design team will utilize their expertise to develop a detailed Capital Improvement Plan that will breakdown estimated costs for construction and maintenance of each pathway type, to include unit cost per mile, total cost for each type and total overall costs.

Comprehensive Plan Update: We will work with the City and Pathway Committee to review the City's existing Comprehensive Plan and update the Pathways section to correlate with the new Pathway Master Plan.

Deliverable Submissions, Progress Reports and Monthly Meetings: Following the completion of each phase outlined above, the design team will submit the required deliverables for review and attend the Pathway Committee meetings on the first Wednesday of every month. We will present progress reports and provide opportunities for discussion of previously submitted draft items and desired changes/issues with the draft documents.



4 | PROJECT APPROACH

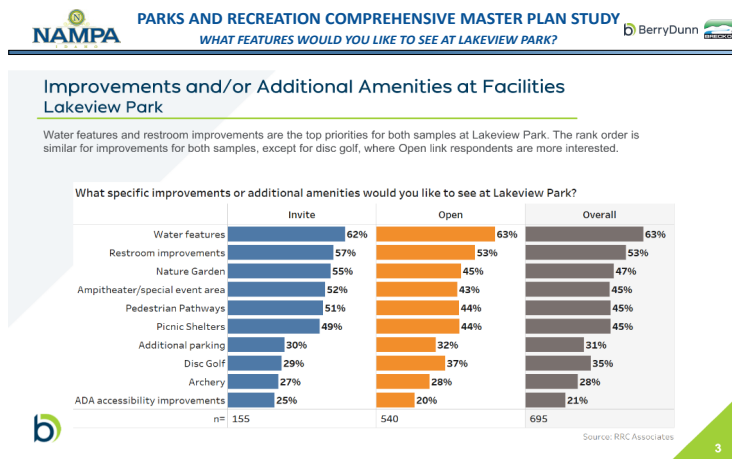
Final Master Plan: When all of the draft documents have been submitted and reviewed by the City and Pathways Committee and public outreach tasks completed, we will move forward with development of the final Pathway Master Plan draft. This will include all of the requested documents outlined in the RFQ.

Planning Innovation

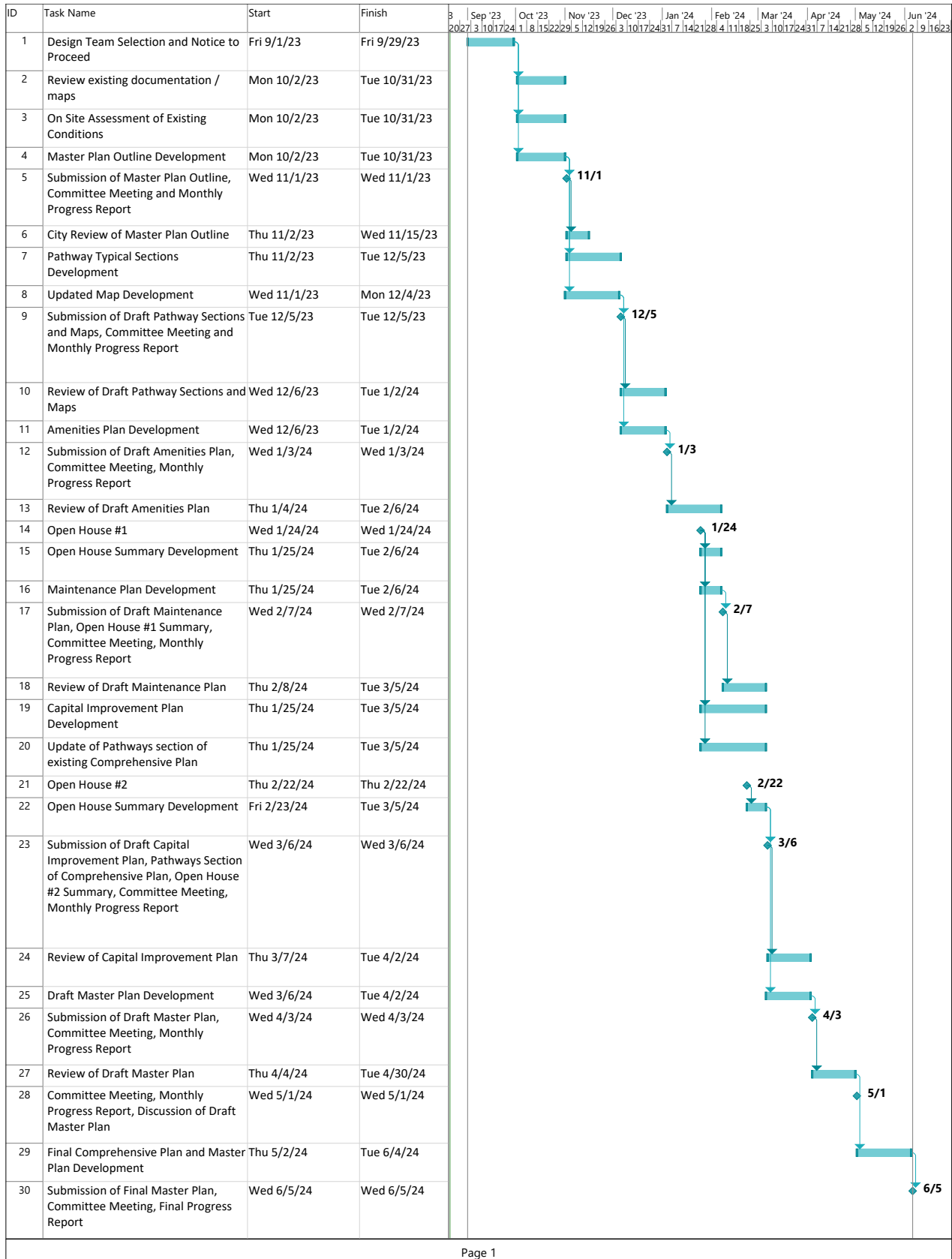
Our planning partner, BerryDunn, has a proven record of expertise in parks, recreation, trails and open space planning for small and large communities throughout the United States, including Idaho. The Breckon Land Design/BerryDunn team has worked together on several successful projects in the Treasure Valley, including the Meridian Parks Master Plan completed in 2016 and updated in 2021, and the Nampa Parks Master Plan currently underway. Our team combines the strengths of a nationally known strategic planning firm with a long-standing local, experienced land planning and design firm, bringing best practices from successful national, regional and local projects to the City of Star.

Challenges and Opportunities

Every planning and design project comes with challenges, but with every challenge lies an opportunity for knowledge and growth. Challenges provide opportunities for additional discussions and sharing of ideas that may not take place otherwise. With this project, we anticipate the primary challenge will be to incorporate the input from user groups, City administrators and staff, Committee members and regulatory agencies into a useful document that is easily understood and accurately reflects the needs of the growing community. Communication is the key to overcoming this challenge - open and honest discussion, free exchange of ideas, and recognizing the contributions of all participants will ensure a successful process.



5 | PROJECT SCHEDULE





Through innovative design, dynamic problem-solving, and holistic creativity,
we create legacy environments that inspire the future.

