

ORDINANCE 368-2022  
(Area of City Impact Map Amendment)

AN ORDINANCE OF THE STAR CITY COUNCIL, ADA AND CANYON COUNTIES, IDAHO, REPEALING AND REPLACING THE CITY'S AREA OF CITY IMPACT MAP; AND PROVIDING AN EFFECTIVE DATE.

WHEREAS, Section 67-6526, Idaho Code allows the City of Star to adopt an area of city impact map after negotiation with the relevant county; and

WHEREAS, Section 67-6526, Idaho Code requires that the area of city impact map be adopted by ordinance of the City Council; and

WHEREAS, pursuant to Section 67-6526 Idaho Code, the City and Canyon County engaged in the committee of nine process, whereupon a majority of the committee of nine recommended the adoption of an area of city impact map; and

WHEREAS, the City Council of the City of Star conducted a public hearing, noticed and held pursuant to Idaho Code 67-6509, on April 19, 2022; and

WHEREAS, the Mayor and Council of the City of Star believe that it is in the City's best interest to repeal and replace the City's current area of city impact map to include areas in both Ada and Canyon County;

NOW, THEREFORE, BE IT RESOLVED BY THE MAYOR AND CITY COUNCIL OF THE CITY OF STAR, ADA AND CANYON COUNTY, IDAHO, as follows:

Section 1: The City of Star hereby repeals the existing area of city impact map and replaces the same with new area of city impact map, attached hereto as Exhibit A.

Section 2: This Ordinance shall take effect and be in force from and after its passage, approval, and publication as required by law. In lieu of publication of the entire ordinance, a summary thereof in compliance with Section 50-901A, Idaho Code maybe be published.

ADOPTED THIS \_\_\_\_ day of April, 2022.

CITY OF STAR

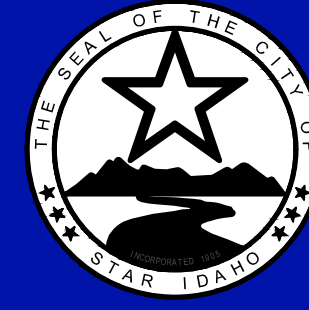
\_\_\_\_\_  
Trevor A. Chadwick, Mayor

ATTEST:




\_\_\_\_\_  
Jacob Qualls, City Clerk

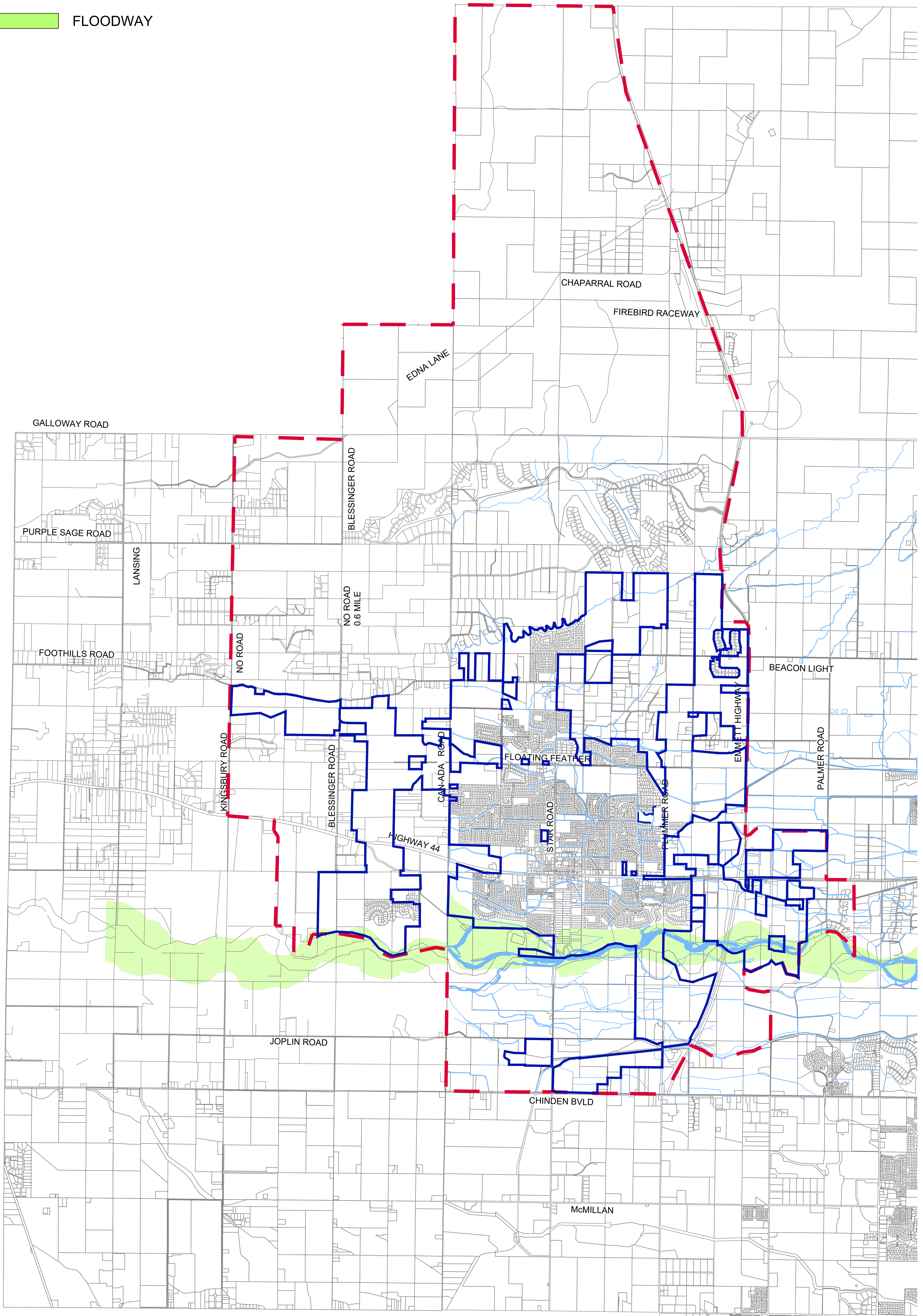


# CITY OF STAR



## LEGEND

-  STAR CITY LIMITS
-  STAR IMPACT AREA
-  FLOODWAY



k:\A ENGINEERING ADMINISTRATION\Star Maps\CITY\CAD\PLAN\IMPACT BOUNDARY MAP.dwg Apr 12, 2022 - 5:30pm

4/12/22

# IMPACT BOUNDARY MAP