

# Chinden West (US-20/26) Project Update

City Council Meeting  
August 16, 2022

Matt Heinichen, ITD  
Heather Carroll, Jacobs



Your Safety. Your Mobility. Your Economic Opportunity.

# Project Background

In 2017, the Idaho Transportation Department (ITD) completed the US-20/26 Corridor Study from I-84 to Eagle Road. The study identified needed long-term improvements including the following:

- Six travel lanes (three in each direction)
- A raised island median to separate eastbound and westbound traffic
- Improved roadway shoulders
- A 10-foot detached shared-use path for pedestrians and cyclists
- Signalized intersections

To advance improvements and maximize existing funding, ITD set an interim goal of widening the corridor to four lanes from I-84 to Eagle Road.



# I-84 to Middleton Road



Construction – Mid-Summer 2022 to Spring 2024

Improvements include the following:

- Six lanes with dedicated right and left turn lanes
- Raised center median



Your Safety. Your Mobility. Your Economic Opportunity.

# Star Road to State Highway 16



Construction is currently scheduled to begin Summer/Fall 2022

Improvements include the following:

- Reconstruction of the Phyllis Canal Bridge and relocation of irrigation lines
- Two lanes in each direction with dedicated right and left turn lanes



Your Safety. Your Mobility. Your Economic Opportunity.



# Chinden West US-20/26 Middleton Road to Star Road

Construction of the Middleton Road to Star Road segment will complete ITD's interim goal of widening the corridor to four lanes from I-84 to Eagle Road.

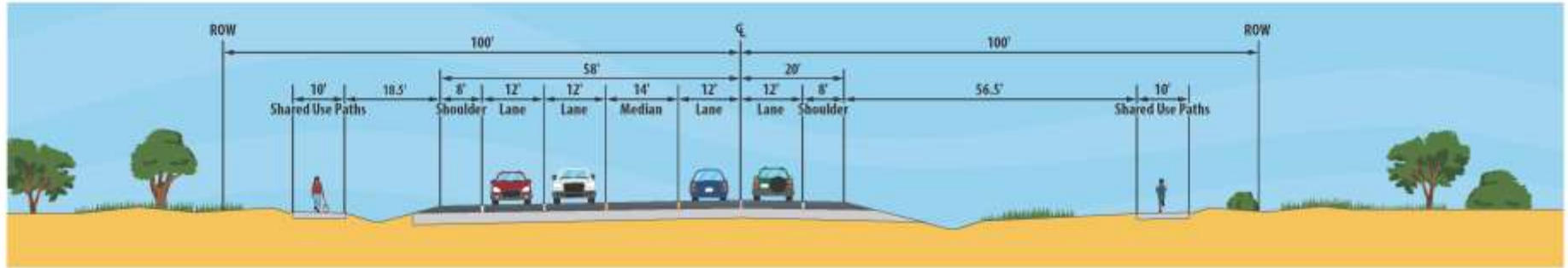
These improvements should reduce the number of crashes and relieve congestion.



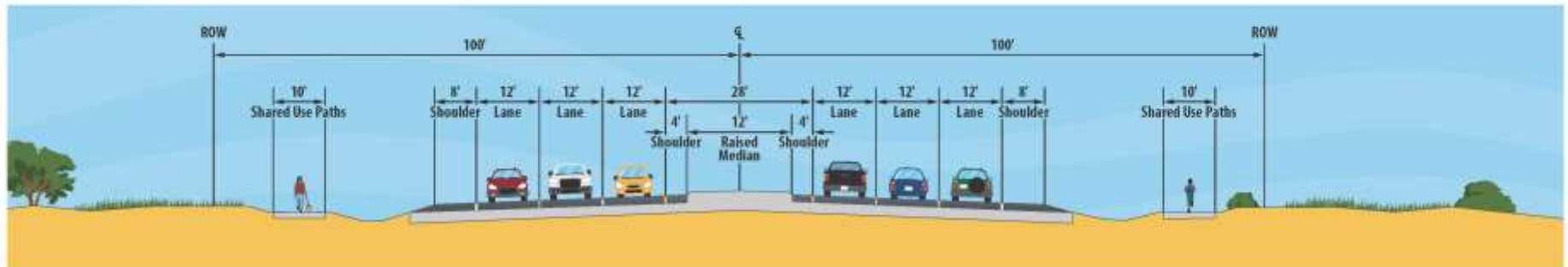
**Your Safety. Your Mobility. Your Economic Opportunity.**

# Middleton Road to Star Road Improvements

Interim improvements will widen the road to four travel lanes (two in each direction), create a median, and make shoulder improvements. The project will also replace existing canal crossings, construct signalized intersections at each mile, improve drainage, and add a shared use path.



Ultimately, this project will widen the roadway to six lanes.



Your Safety. Your Mobility. Your Economic Opportunity.

# Intersection Improvements

ITD plans to improve and signalize six intersections within the corridor at Middleton Road, Midland Boulevard, Northside Boulevard, Franklin Boulevard, 11th Avenue, and N Can Ada Road.

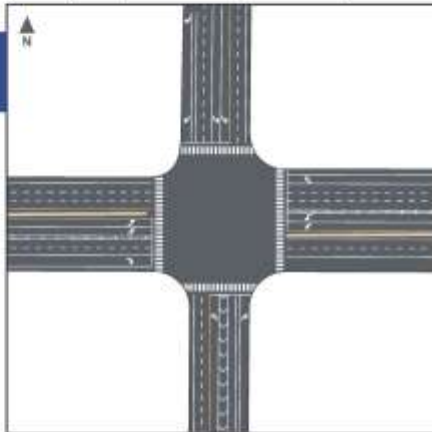


Your Safety. Your Mobility. Your Economic Opportunity.

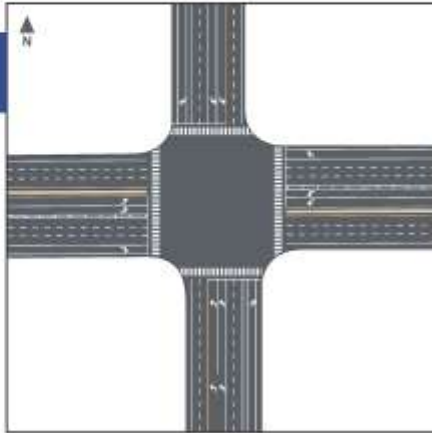
# Intersection Configurations - Middleton Rd



**Interim Intersection**



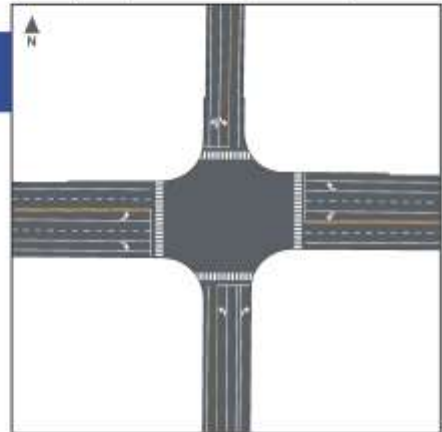
**Ultimate Intersection**



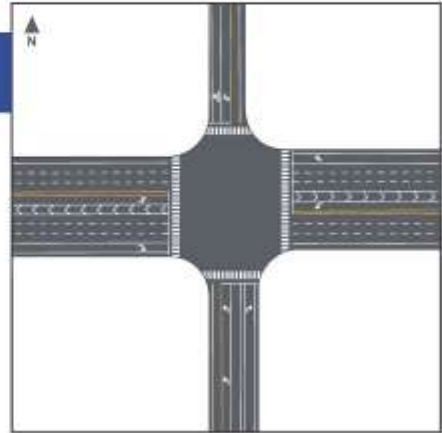
# Intersection Configurations - Midland Blvd



**Interim Intersection**



**Ultimate Intersection**



*ITD is working with local agencies to coordinate future US-20/26 connections to local roads. The design currently shown may change as a result.*

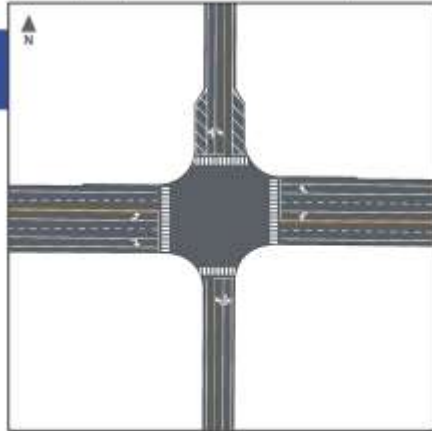
**Your Safety. Your Mobility. Your Economic Opportunity.**



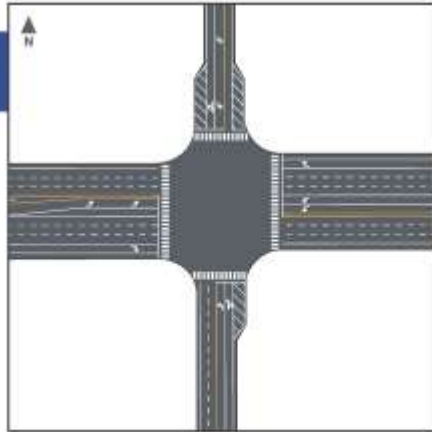
# Intersection Configurations - Northside Blvd



**Interim Intersection**



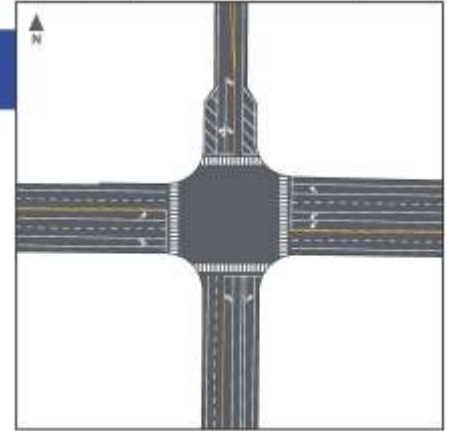
**Ultimate Intersection**



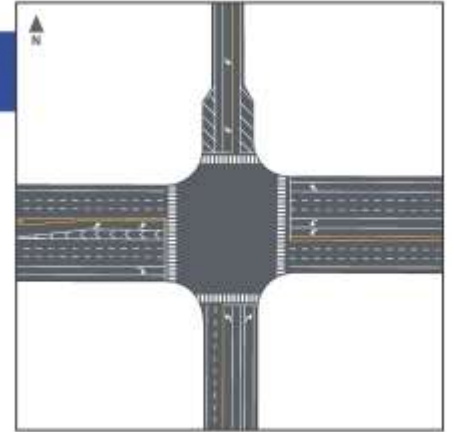
# Intersection Configurations - N Franklin Blvd



**Interim Intersection**



**Ultimate Intersection**



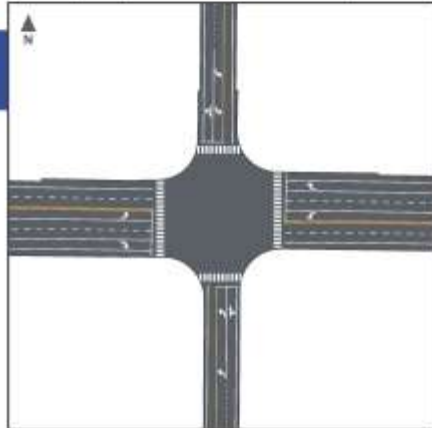
*ITD is working with local agencies to coordinate future US-20/26 connections to local roads. The design currently shown may change as a result.*

**Your Safety. Your Mobility. Your Economic Opportunity.**

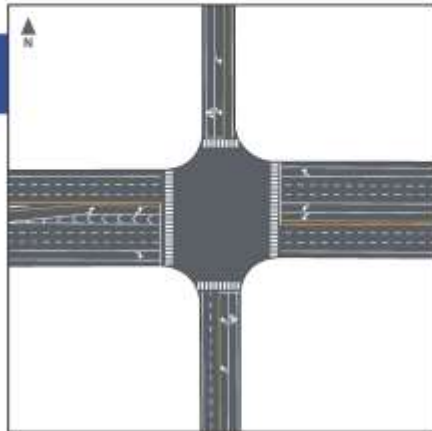
# Intersection Configurations - 11th Ave N



## Interim Intersection



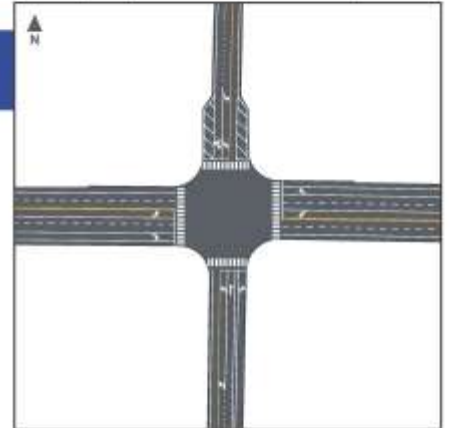
## Ultimate Intersection



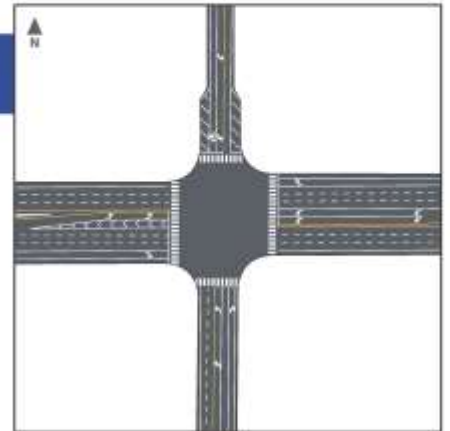
# Intersection Configurations - N Can-Ada Rd



## Interim Intersection



## Ultimate Intersection



*ITD is working with local agencies to coordinate future US-20/26 connections to local roads. The design currently shown may change as a result.*

**Your Safety. Your Mobility. Your Economic Opportunity.**

# What Has Changed Since 2017?

The Environmental Assessment completed in 2017 identified a few design features that will **NOT** be implemented including the following:

- Cul-de-sacs at Knott Lane, Madison Road and Prescott Lane  
*Instead ITD will construct right turn lanes for deceleration at these locations. These intersections will also be limited to Right In/Right Out configurations for both the interim and ultimate designs.*



- Half or full Continuous Flow Intersections (CFI) will not be included in the interim project  
*ITD will construct improved signalized intersections at Midland Boulevard, Northside Boulevard, N Franklin Boulevard, 11th Avenue, and N Can-Ada Road.*



# Schedule



\*Subject to change





# State Highway 16 Project Update

City Council Meeting  
August 16, 2022

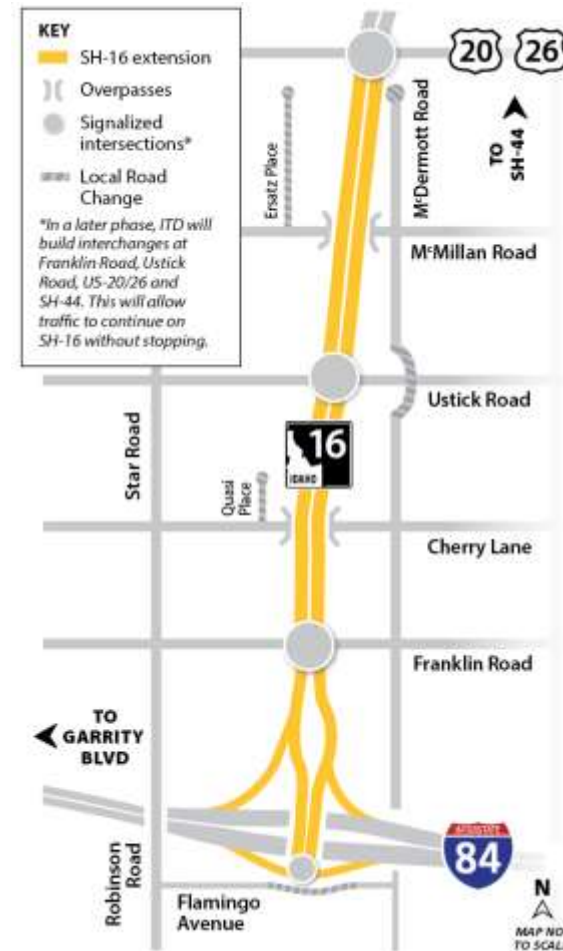
Merrill Sharp, ITD



Your Safety. Your Mobility. Your Economic Opportunity.

# SH-16 Overview

- Phased approach
- Phase 3 is in design
- Construction of Phase 2 has begun
- Anticipated completion of Phase 2 in 2024



# Project Highlights

## South (I-84 to Franklin Rd)



### I-84 and Franklin Road

- When complete, a new interchange will provide access to the central Treasure Valley north of I-84.
- Ramps will be built to connect I-84 to Franklin Road.
- Franklin Road will be widened at the intersection with SH-16. New signals will be installed.
- Part of Flamingo Avenue will be moved south to allow room for new I-84 ramps.

# Project Highlights

## North (Ustick Rd to US-20/26)



### US-20/26 Intersection

- The intersection of SH-16 and US-20/26 will be reconstructed.
- US-20/26 will be widened immediately around the intersection.
- McDermott Road will end at a cul-de-sac just south of US-20/26.
- To access US-20/26 from McMillan Road, please use Star Road or Black Cat Road.
- ITD will construct a new local road (Ersatz Place) to provide access to properties.



# Project Highlights

## North (Ustick Rd to US-20/26)



### McMillan Road Overpass

- An overpass will carry SH-16 traffic over McMILLAN Road.
- A new bicyclist and pedestrian bridge will be constructed over Five Mile Creek.

# Project Highlights

## North (Ustick Rd to US-20/26)



### Ustick Road Intersection

- Signals will be installed at the intersection of Ustick Road and SH-16.
- Ustick Road will be widened immediately around the intersection with SH-16.
- McDermott Road will be moved east of the intersection.

# Anticipated Construction Impacts



- Access to business, residential areas and irrigation will remain open
- Occasional closures and delays on roads in the area
- Increased truck traffic
- Noise and some nighttime work
- McDermott Rd. and Flamingo Ave. detours
- Construction underway at I-84 and U.S. 20/26

**Allow extra time for travel**

