

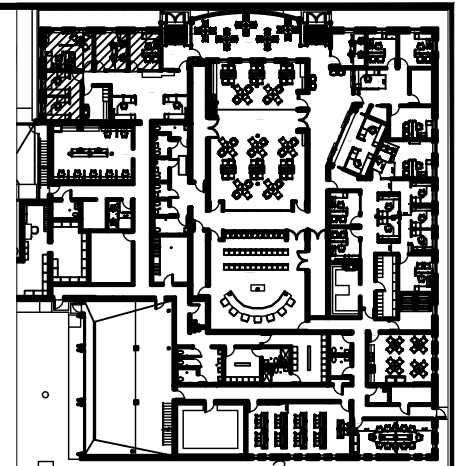
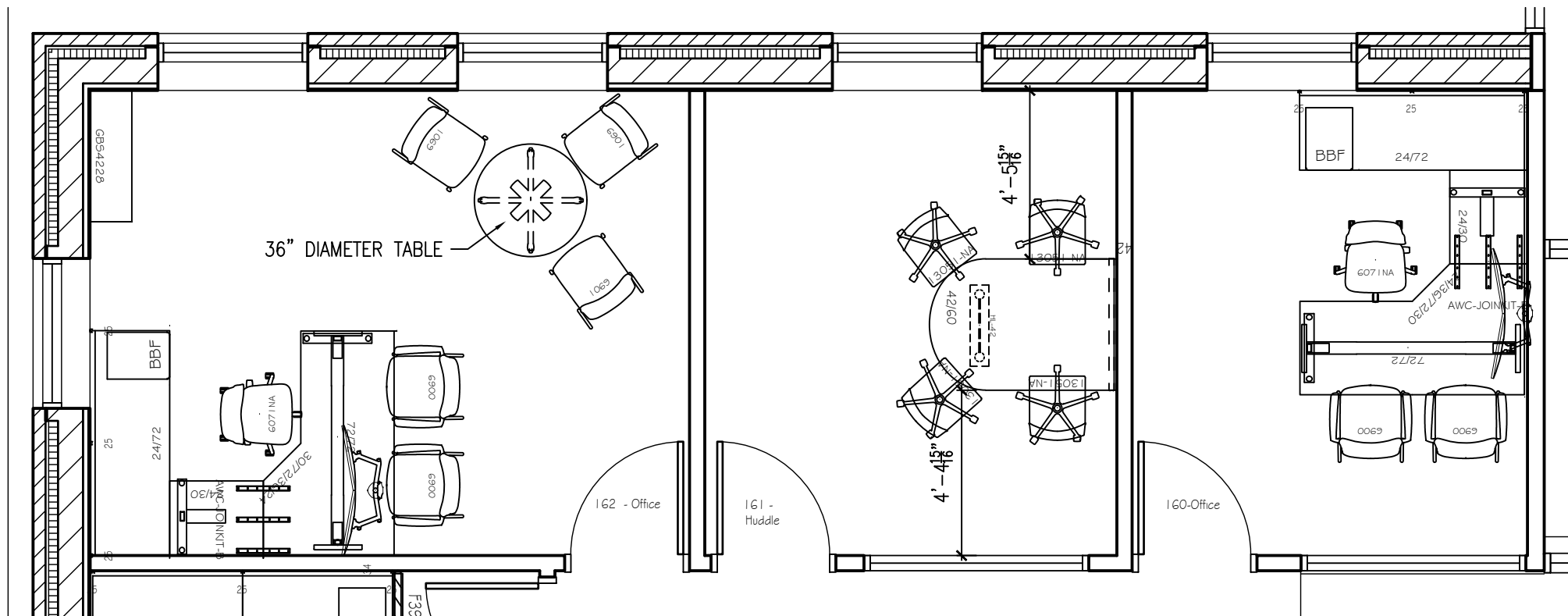
All measurements need to be verified



ALTERNATIVE BUSINESS FURNITURE, INC.
 6533 FLYING CLOUD DRIVE, SUITE 800
 EDEN PRAIRIE, MN 55344
 PHONE: 952.937.7688 FAX: 952.937.7691

City of Spring Lake Park
 PHASE I
 CONTACT: WANDA BROWN

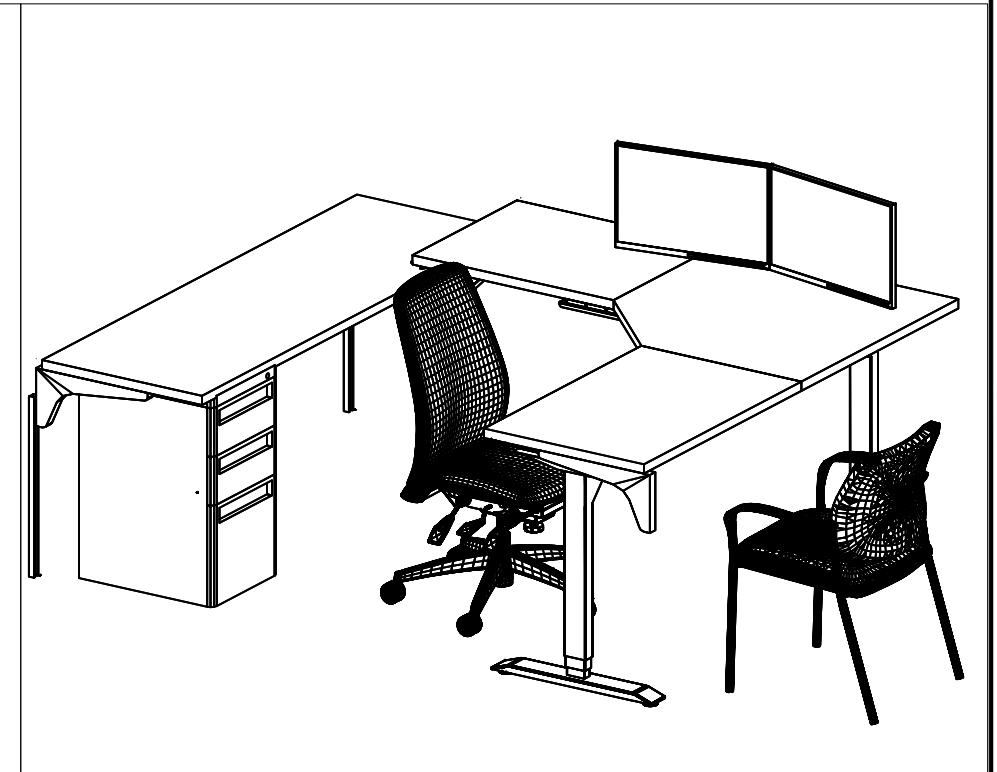
SCALE: 1/4" = 1' 0"
DATE: 02.20.24
REVISIONS: 2.28.24
DRAWN BY: MMM/BFP
M&MTS. VERIFIED :



LARGE OFFICE



HUDDLE



OFFICE

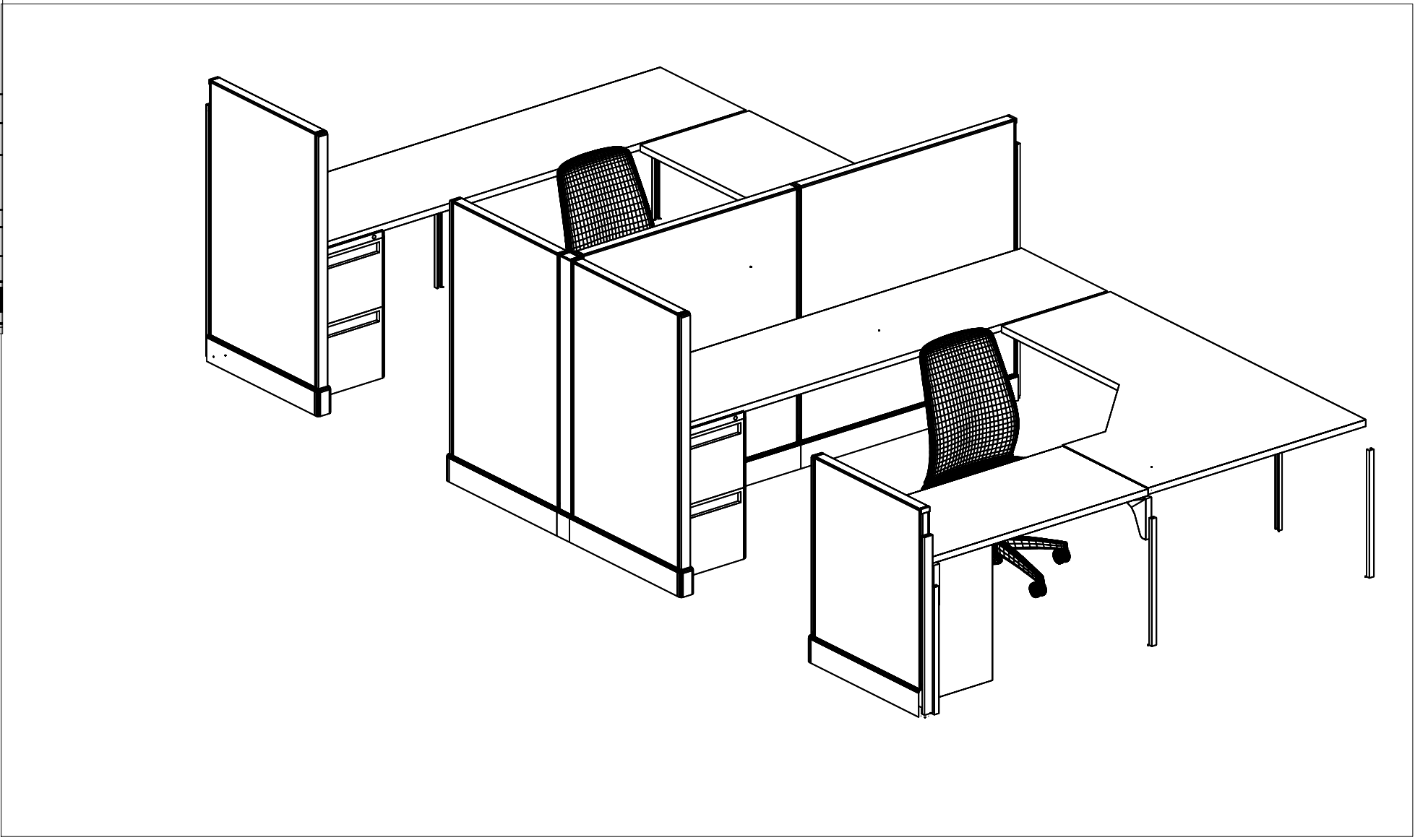
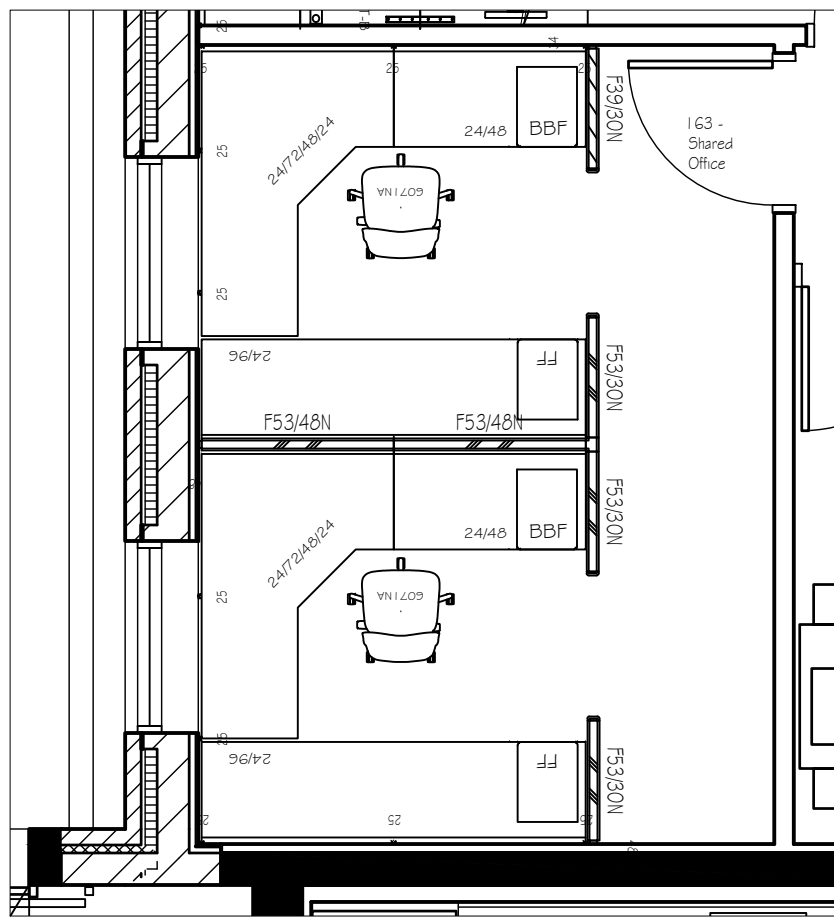
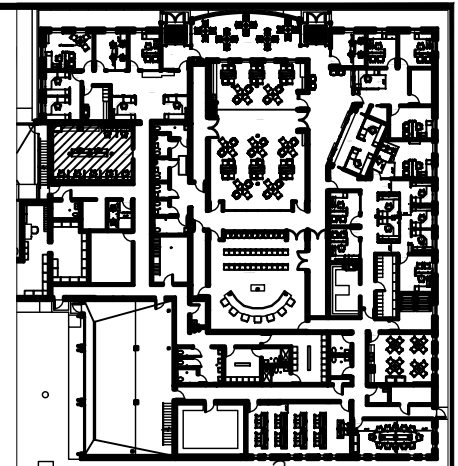
All measurements need to be verified



ALTERNATIVE BUSINESS FURNITURE, INC.
 6533 FLYING CLOUD DRIVE, SUITE 800
 EDEN PRAIRIE, MN 55344
 PHONE: 952.937.7688 FAX: 952.937.7691

CITY OF SPRING LAKE PARK -
 PHASE I - OFFICES
 CONTACT: WANDA BROWN

SCALE: 1/4" = 1' 0"
 DATE: 02.20.24
 REVISIONS: 2.28.24
 DRAWN BY: MMM/BPF
 MGMTS. VERIFIED :



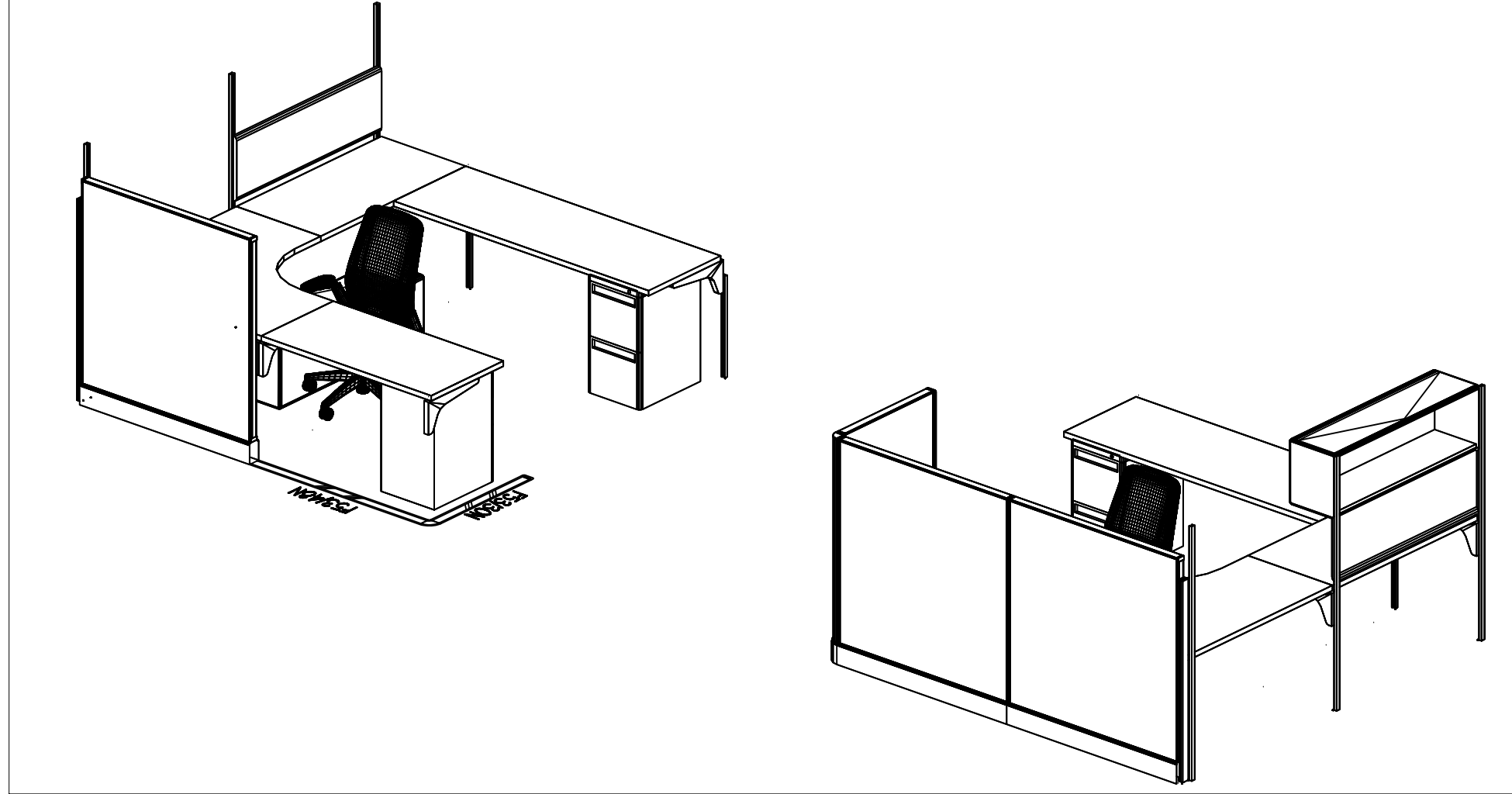
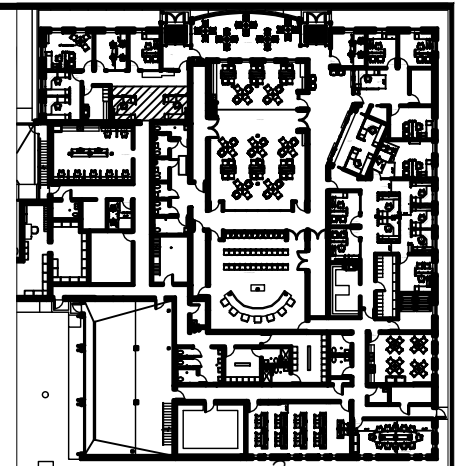
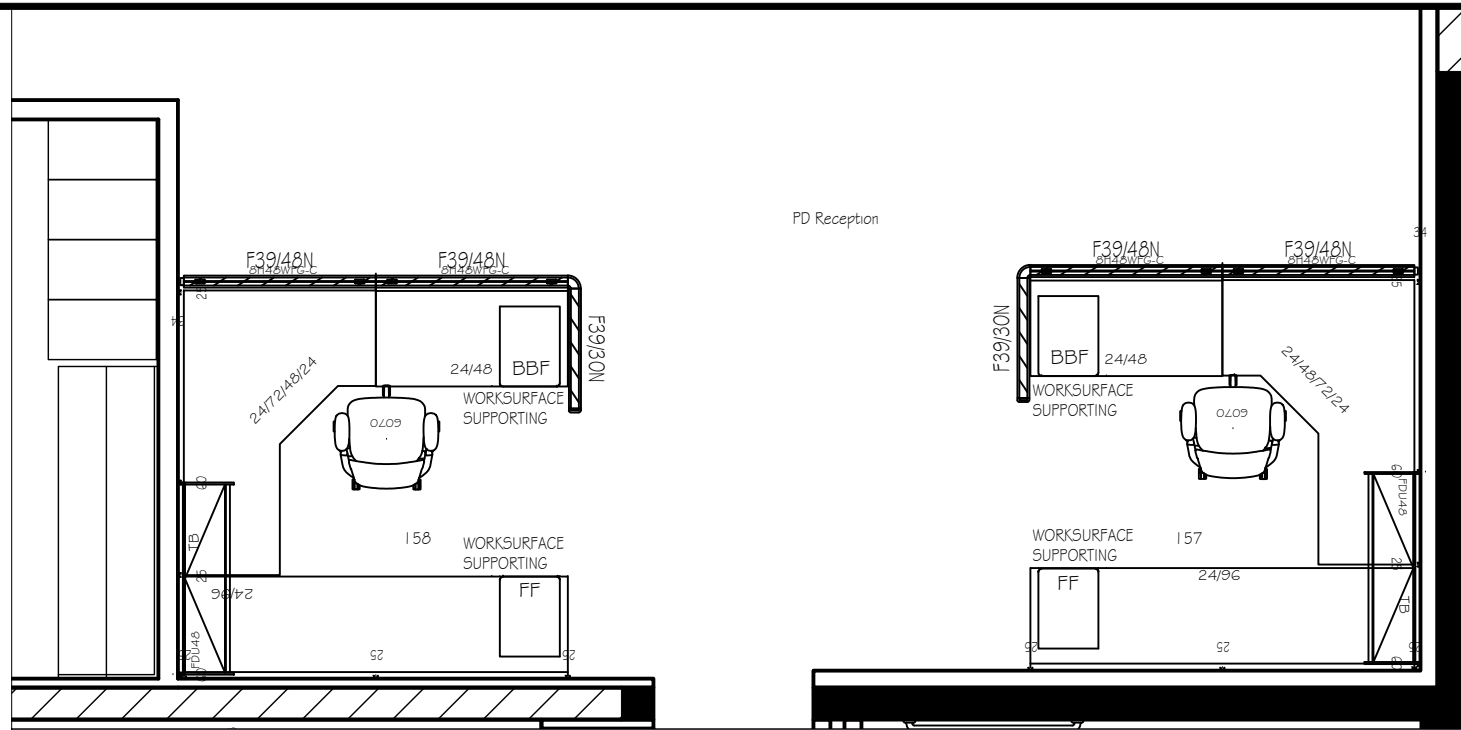
All measurements need to be verified



ALTERNATIVE BUSINESS FURNITURE, INC.
 6533 FLYING CLOUD DRIVE, SUITE 800
 EDEN PRAIRIE, MN 55344
 PHONE: 952.937.7688 FAX: 952.937.7691

CITY OF SPRING LAKE PARK
 PHASE I - SHARED OFFICE
 CONTACT: WANDA BROWN

SCALE: 1/4" = 1' 0"
 DATE: 02.20.24
 REVISIONS: 2.28.24
 DRAWN BY: MMM/BP
 MSMTS. VERIFIED :



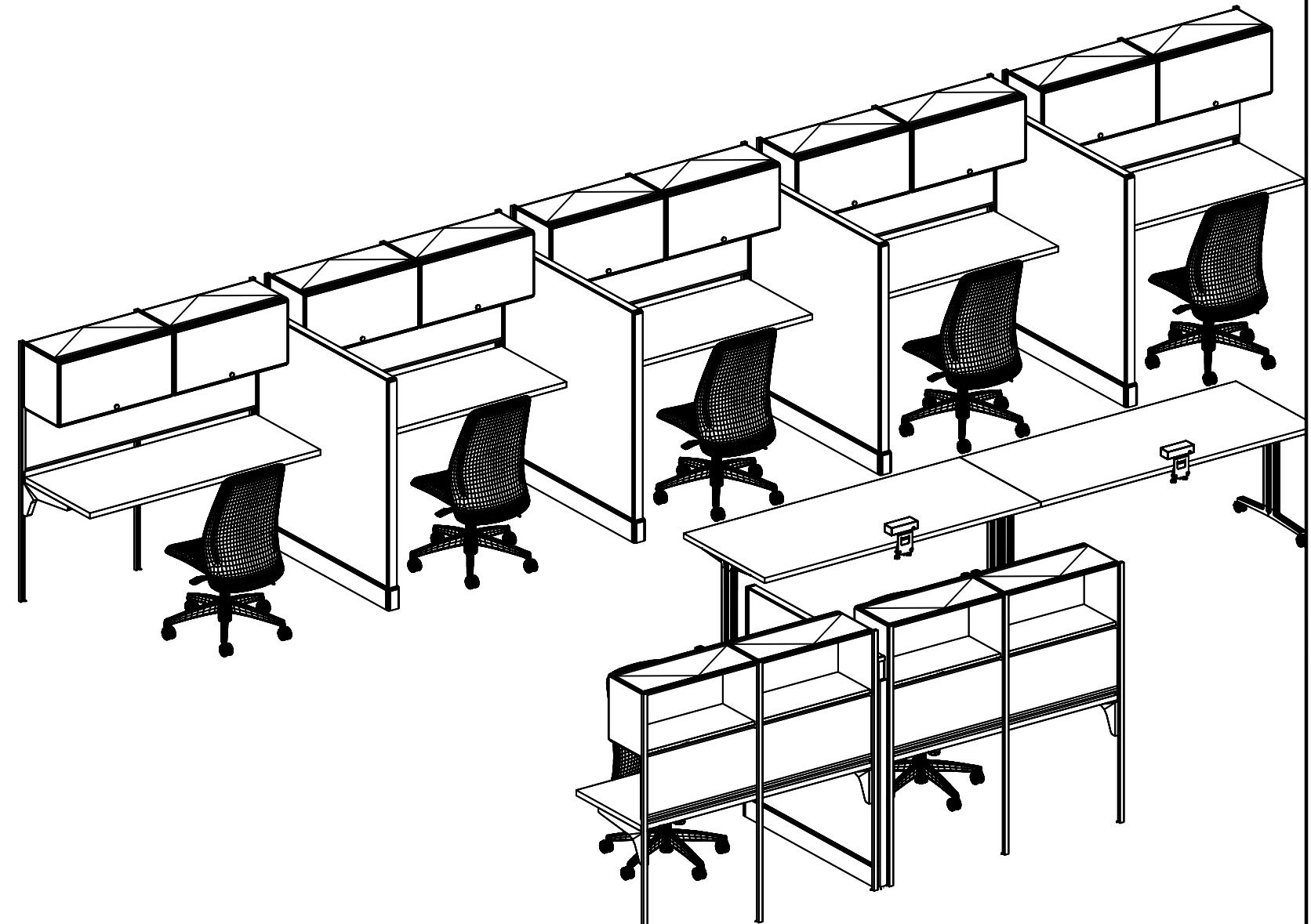
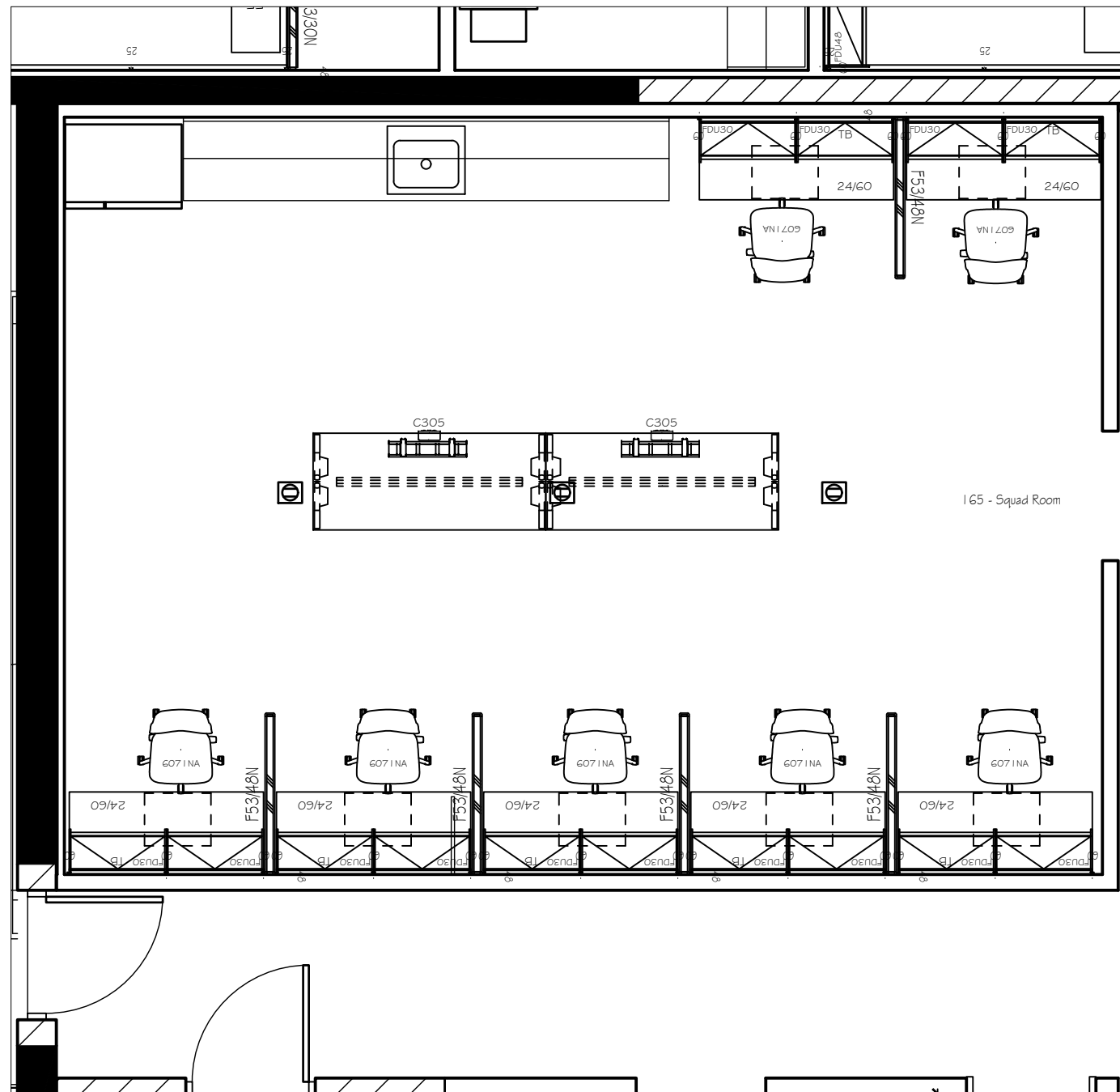
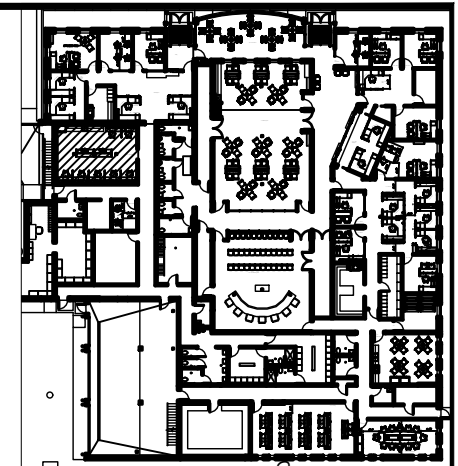
All measurements need to be verified



ALTERNATIVE BUSINESS FURNITURE, INC.
 6533 FLYING CLOUD DRIVE, SUITE 800
 EDEN PRAIRIE, MN 55344
 PHONE: 952.937.7688 FAX: 952.937.7691

CITY OF SPRING LAKE PARK -
 PHASE I - WORKSTATIONS
 CONTACT: WANDA BROWN

SCALE: 1/4" = 1' 0"
 DATE: 02.20.24
 REVISIONS: 2.28.24
 DRAWN BY: MMM/BFP
 MGMTS. VERIFIED :



All measurements need to be verified

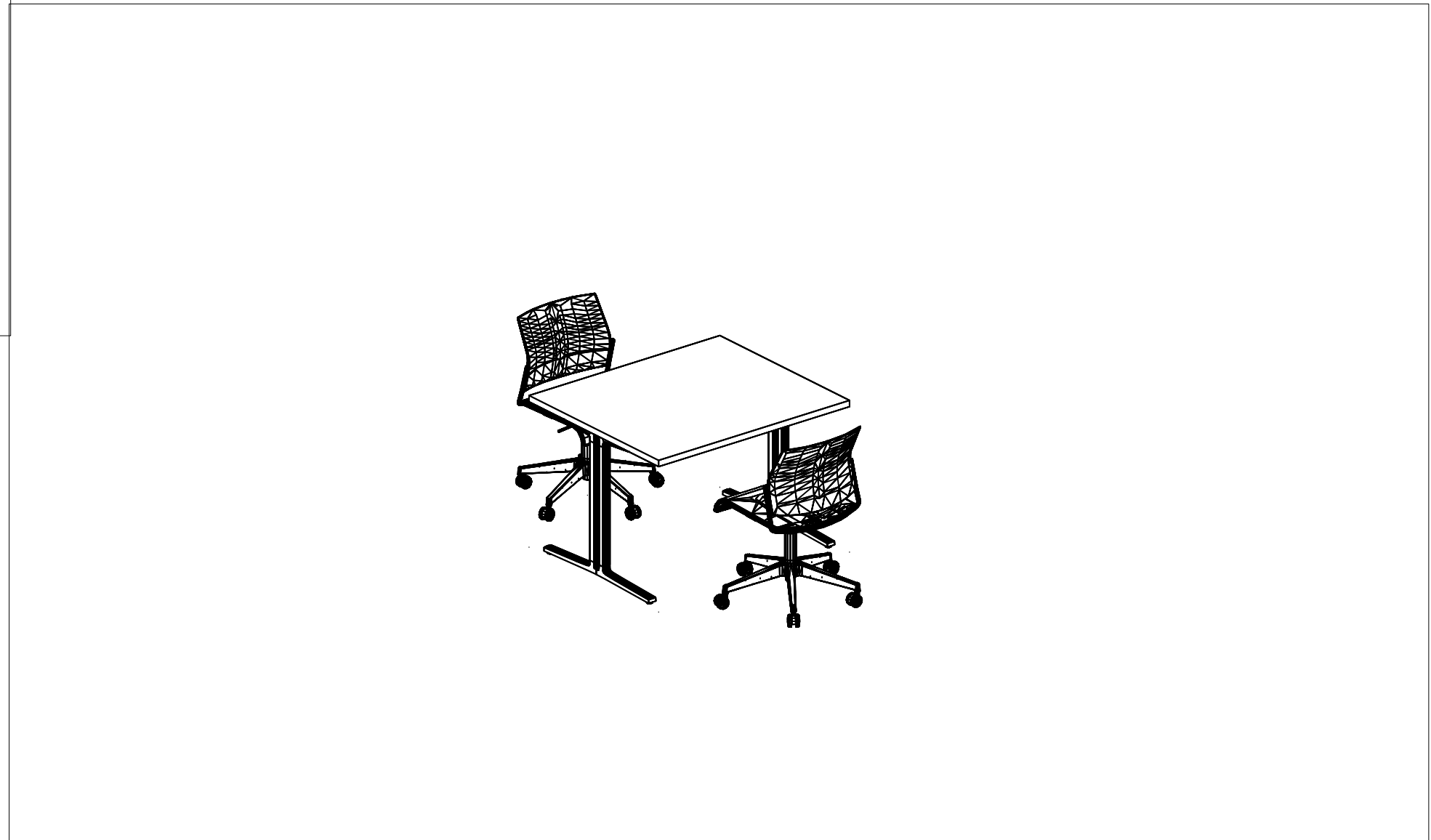
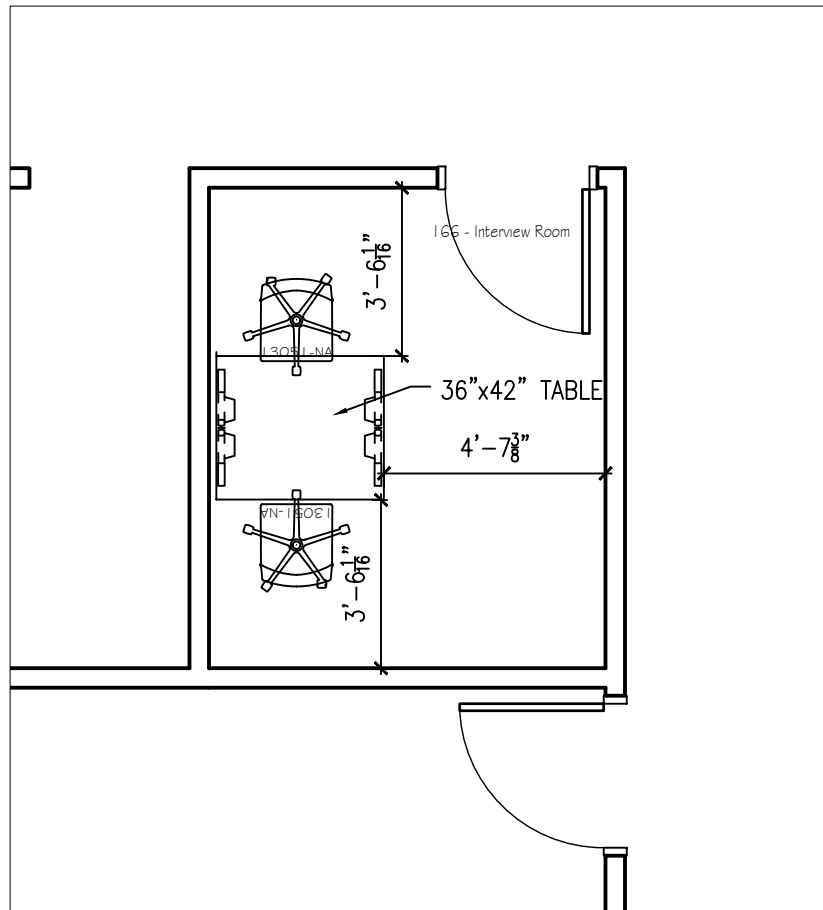
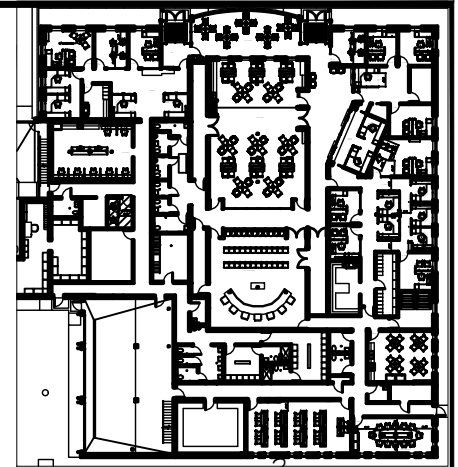


ALTERNATIVE BUSINESS FURNITURE, INC.
 6533 FLYING CLOUD DRIVE, SUITE 800
 EDEN PRAIRIE, MN 55344
 PHONE: 952.937.7688 FAX: 952.937.7691

CITY OF SPRING LAKE PARK -
 PHASE I - SQUAD ROOM

CONTACT: WANDA BROWN

SCALE: 1/4" = 1' 0"
 DATE: 02.20.24
 REVISIONS: 2.28.24
 DRAWN BY: MMM/BP
 MGMTS. VERIFIED :



All measurements need to be verified



ALTERNATIVE BUSINESS FURNITURE, INC.
 6533 FLYING CLOUD DRIVE, SUITE 800
 EDEN PRAIRIE, MN 55344
 PHONE: 952.937.7688 FAX: 952.937.7691

CITY OF SPRING LAKE PARK
 PHASE I - INTERVIEW ROOM

CONTACT: WANDA BROWN

SCALE: 1/4" = 1' 0"
 DATE: 02.20.24
 REVISIONS: 2.28.24
 DRAWN BY: MMM/BFP
 MSMTS. VERIFIED :