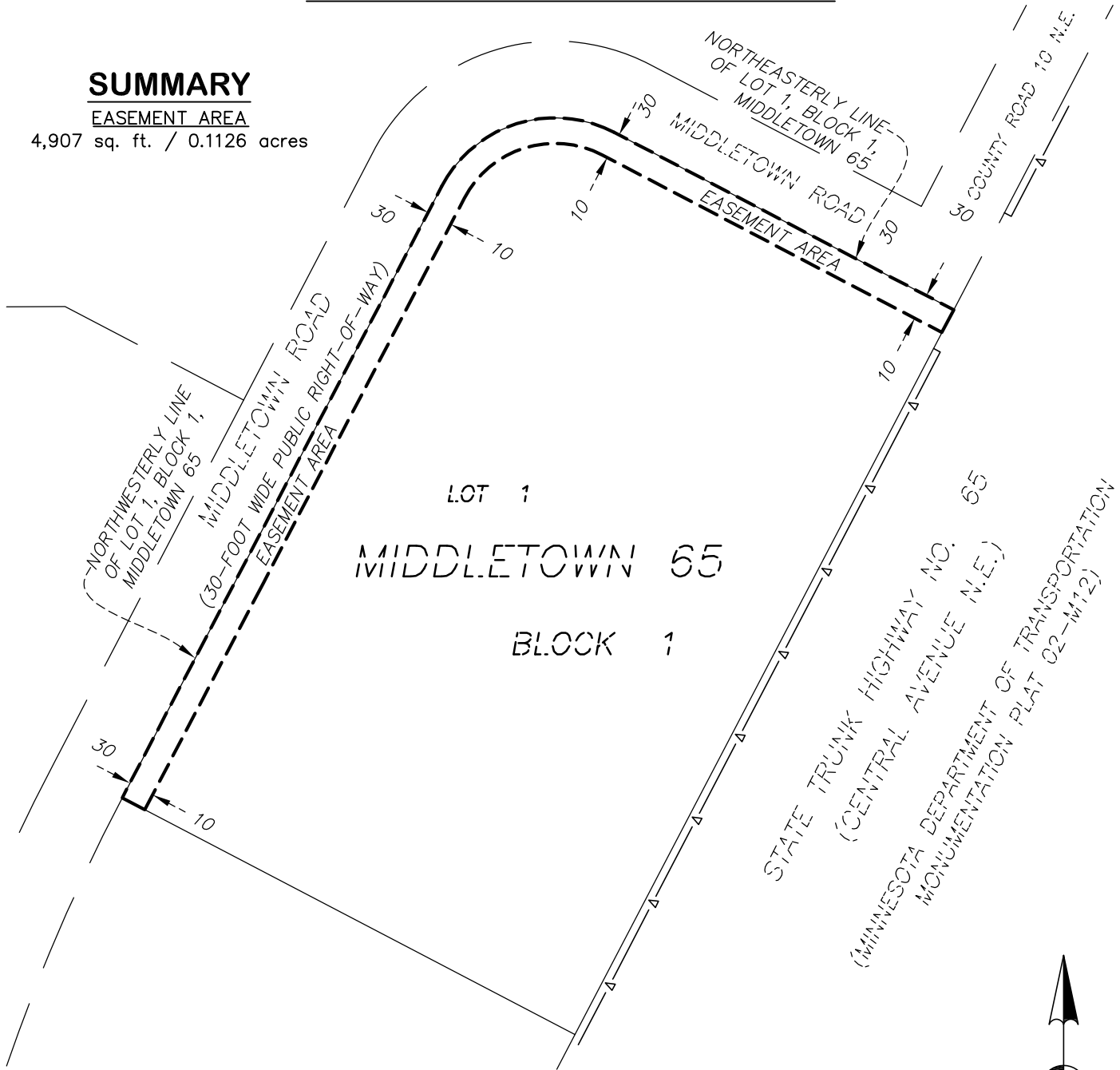


# STREET AND SIDEWALK EASEMENT

## SUMMARY

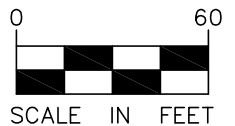
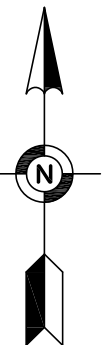
### EASEMENT AREA

4,907 sq. ft. / 0.1126 acres



A perpetual easement for street and sidewalk purposes over, under, and across the northwesterly and northeasterly 10 feet of Lot 1, Block 1, MIDDLETOWN 65, according to the recorded plat thereof, Anoka County, Minnesota.

Containing 4,907 square feet or 0.1126 acres, more or less.



STREET AND SIDEWALK EASEMENT FOR:

**KIMLEY-HORN  
AND ASSOCIATES**

SITE LOCATION: 8188 & 8200 HIGHWAY 65 NE  
SPRING LAKE PARK, MN 55432



**Egan, Field & Nowak, Inc.**

land surveyors since 1872

475 Old Highway 8 NW, Suite 200  
New Brighton, Minnesota 55112  
PHONE: (612) 466-3300  
WWW.EFNSURVEY.COM

COPYRIGHT © 2022 By EGAN, FIELD & NOWAK, INC.