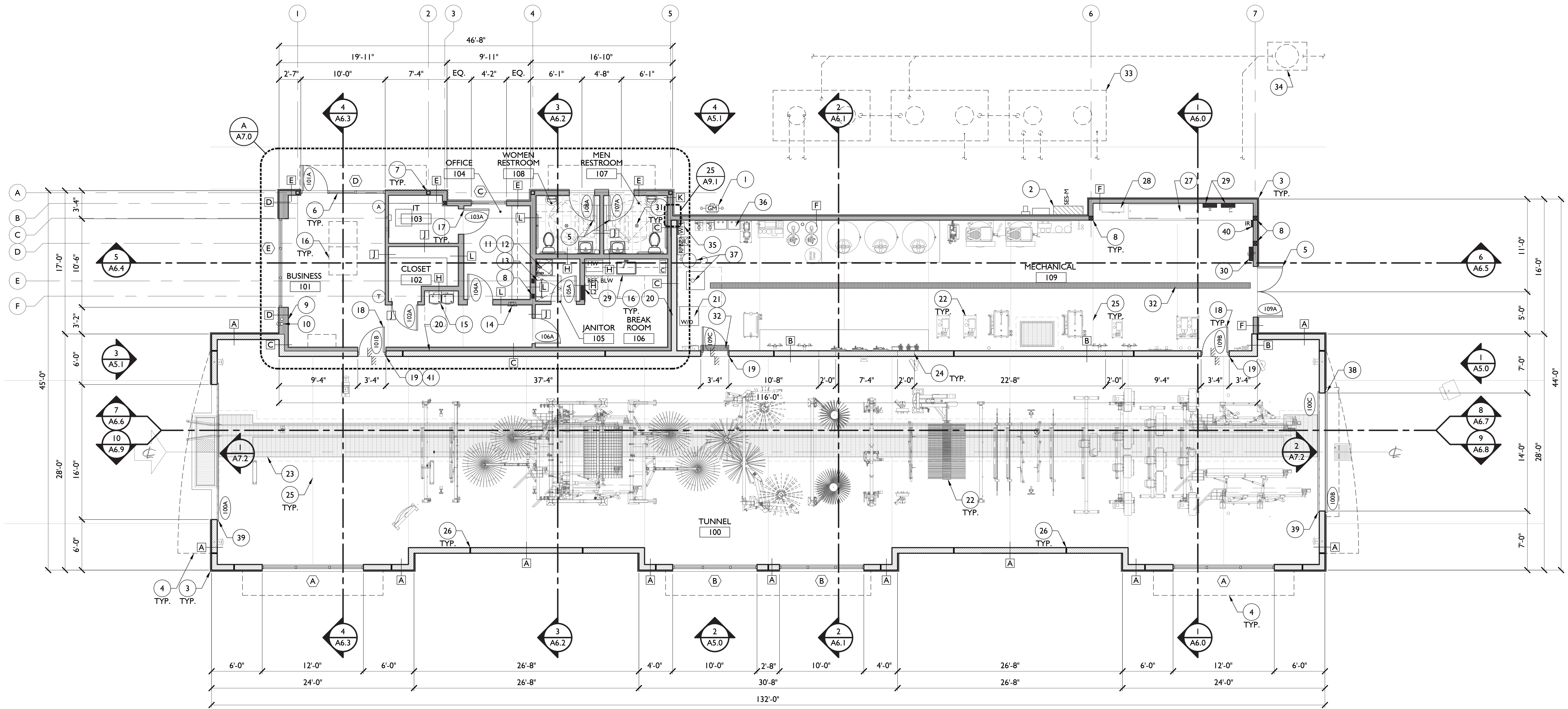


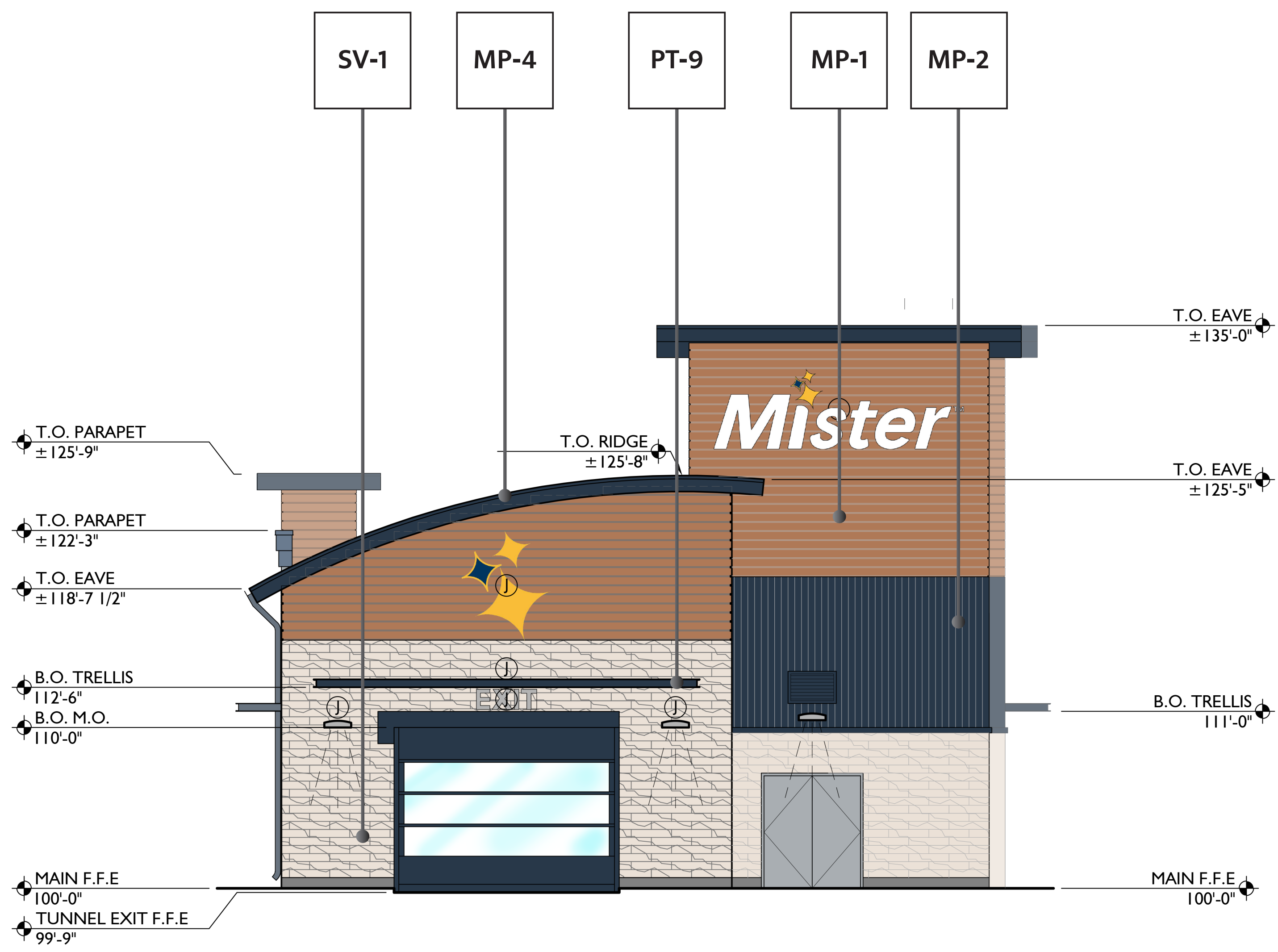


May 12, 2022

Mister Car Wash 130C1
Elevations and Materials



1 **FLOOR PLAN**
3/16" = 1'



MATERIAL TAKE OFF

- Exterior Building Finishes - 8,885 sqft - 100%
- A. (SV-1) Natural Stone (Veneer) - 2,108 sqft - 24%
 - B. (ALU) Store Front and Glass - 511 sqft - 6%
 - C. (EIFS) EIFS - 1,609 sqft - 18%
 - D. (CU-1/2) CMU - 1,032 sqft - 12%
 - E. (MP-1) Alumaboard - 2,422 sqft - 27%
 - F. (MP-2) Metal Wall Panel - 798 sqft - 9%
 - G. Polycarbonate Overhead Doors - 312 sqft - 3%
 - H. Painted Hollow Metal Doors - 93 sqft - 1%

GENERAL NOTE: ALL EXTERIOR WALL MOUNTED LIGHTING TO BE FULL CUTOFF DOWNLIGHTS.

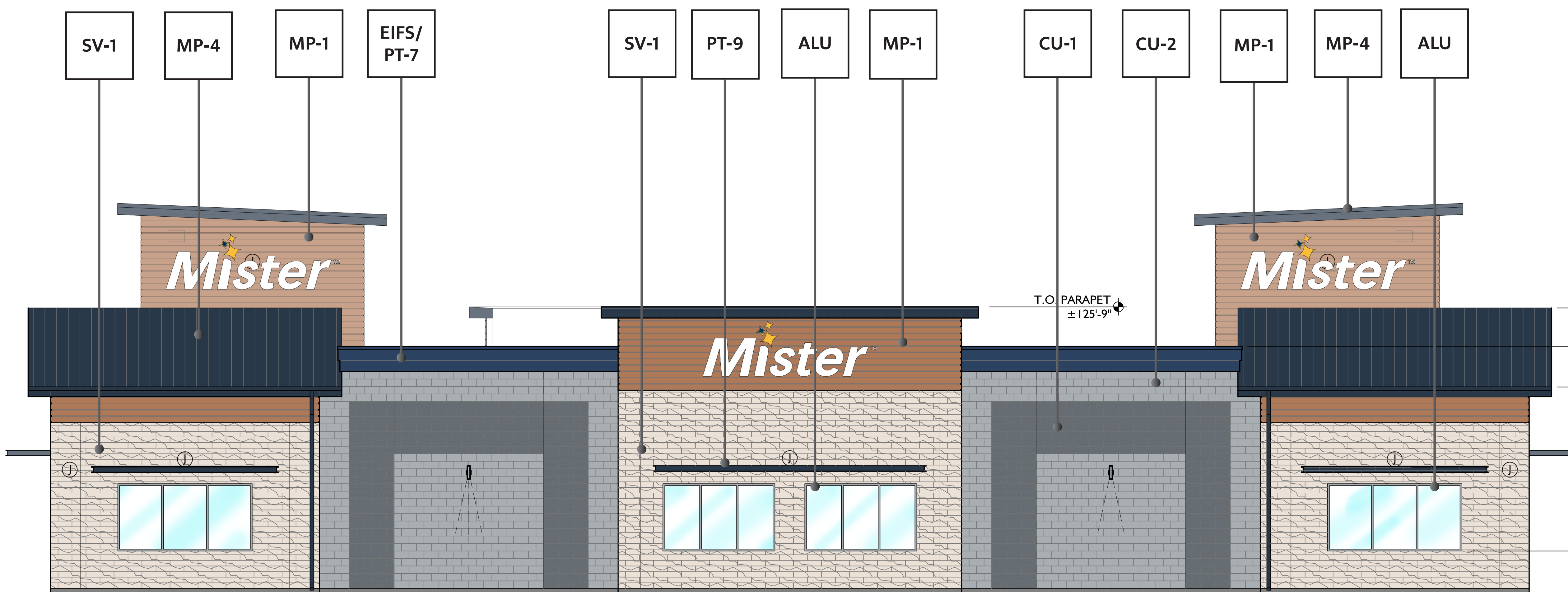
FINISH LEGEND

MP-2		METAL PANEL - CTMRS / PRE-FINISHED R-PANEL / IN THE NAVY - SW9178	CU-1		CMU (TEXTURED) - COLOR TO BE CLOSE TO WALL STREET SW7665
MP-4		METAL PANEL - CTRMS / PRE-FINISHED STANDING SEAM METAL ROOF / 436B3488 FLUROPON IN THE NAVY	ALU		WINDOWS & DOORS - THERMALLY BROKEN ANODIZED ALUMINUM / CLEAR
MP-1		METAL PANEL - ALUMABOARD / PRE-FINISHED METAL SCREEN SYSTEM / HAZELNUT BROWN	CU-2		CMU (SMOOTH) - COLOR TO BE CLOSE TO MORNING FOG SW6255
SV-1		STONE VENEER - ELDORADO / VANTAGE 30 / WHITE ELM	CON		CONCRETE / STANDARD GRAY
PT-9		EXTERIOR PAINT - SHERWIN-WILLIAMS / IN THE NAVY SW9178	PT-3		EXTERIOR PAINT - SHERWIN-WILLIAMS / WALL STREET SW7665
PT-6		EXTERIOR PAINT - SHERWIN-WILLIAMS / MORNING FOG SW6225	PT-7		EXTERIOR PAINT - SHERWIN-WILLIAMS / DRESS BLUES SW9176
EIFS		EXTERIOR INSULATION FINISHING SYSTEM			

CAR WASH TUNNEL EXIT ELEVATION

1

3/16" = 1'



CAR WASH TUNNEL WALL ELEVATION

2

3/16" = 1'



MATERIAL TAKE OFF

- Exterior Building Finishes - 8,885 sqft - 100%
- A. (SV-1) Natural Stone (Veneer) - 2,108 sqft - 24%
 - B. (ALU) Store Front and Glass - 511 sqft - 6%
 - C. (EIFS) EIFS - 1,609 sqft - 18%
 - D. (CU-1/2) CMU - 1,032 sqft - 12%
 - E. (MP-1) Alumaboard - 2,422 sqft - 27%
 - F. (MP-2) Metal Wall Panel - 798 sqft - 9%
 - G. Polycarbonate Overhead Doors - 312 sqft - 3%
 - H. Painted Hollow Metal Doors - 93 sqft - 1%

GENERAL NOTE: ALL EXTERIOR WALL MOUNTED LIGHTING TO BE FULL CUTOFF DOWNLIGHTS.

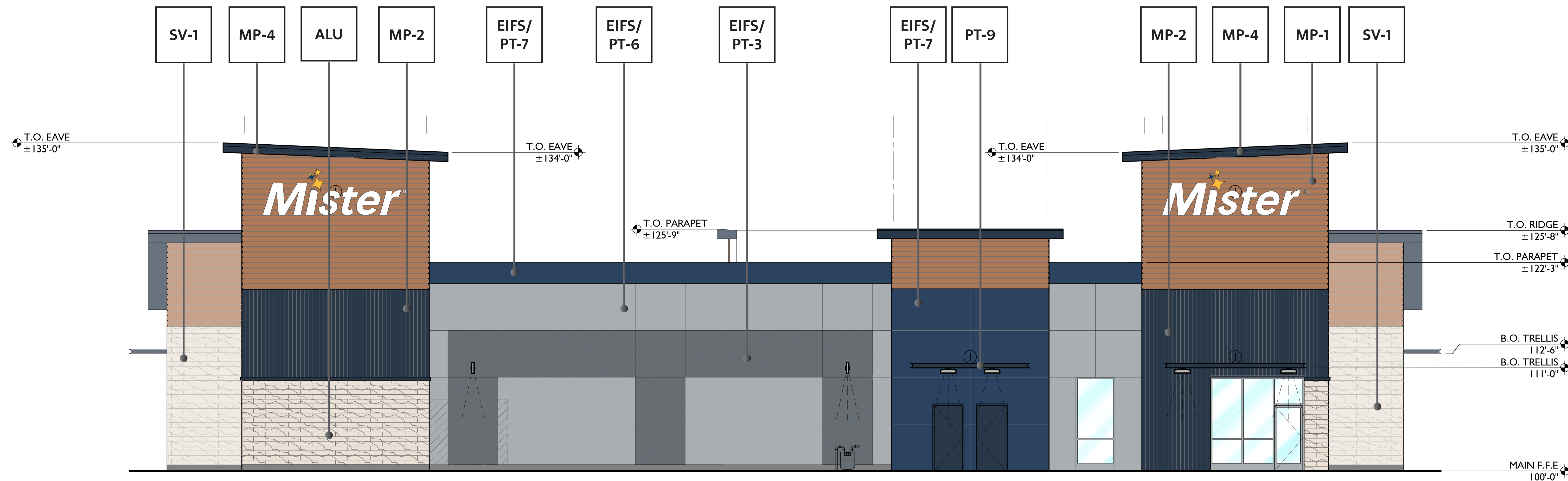
FINISH LEGEND

MP-2		METAL PANEL - CTMRS / PRE-FINISHED R-PANEL / IN THE NAVY - SW9178	CU-1		CMU (TEXTURED) - COLOR TO BE CLOSE TO WALL STREET SW7665
MP-4		METAL PANEL - CTRMS / PRE-FINISHED STANDING SEAM METAL ROOF / 436B3488 FLUOROPON IN THE NAVY	ALU		WINDOWS & DOORS - THERMALLY BROKEN ANODIZED ALUMINUM / CLEAR
MP-1		METAL PANEL - ALUMABOARD / PRE-FINISHED METAL SCREEN SYSTEM / HAZELNUT BROWN	CU-2		CMU (SMOOTH) - COLOR TO BE CLOSE TO MORNING FOG SW6255
SV-1		STONE VENEER - ELDORADO / VANTAGE 30 / WHITE ELM	CON		CONCRETE / STANDARD GRAY
PT-9		EXTERIOR PAINT - SHERWIN-WILLIAMS / IN THE NAVY SW9178	PT-3		EXTERIOR PAINT - SHERWIN-WILLIAMS / WALL STREET SW7665
PT-6		EXTERIOR PAINT - SHERWIN-WILLIAMS / MORNING FOG SW6225	PT-7		EXTERIOR PAINT - SHERWIN-WILLIAMS / DRESS BLUES SW9176
EIFS		EXTERIOR INSULATION FINISHING SYSTEM			

CAR WASH TUNNEL ENTRANCE

3

3/16" = 1'



BUSINESS/ MECHANICAL ELEVATION

4

3/16" = 1'