

P.122973-A



CITY OF SPRING LAKE PARK
1701 Eighty-First Avenue N.E.
Spring Lake Park, MN 55432
Ph: 763-784-6491 Fax: 763-792-7257

PUBLIC RIGHT-OF-WAY APPLICATION

NAME/COMPANY: Lumen/CenturyLink

GOPHER 1-CALL REG. NO.: Ticket #'s 241203086 and 241203182

ADDRESS: 701 Holland LN NE, Minneapolis, MN 55432

PHONE: 651-378-2650

FAX:

E-MAIL ADDRESS: Susan.Blue@lumen.com

NAME OF REPRESENTATIVE: Sue Blue

REPRESENTATIVE PHONE NO'S.: 651-378-2650

DESCRIPTION OF PROPOSED WORK: including a start date and completion date:

Lumen Project #P.122973 (Aerial) PLACE 26703' OF AERIAL
FIBER ON EXISTING POLES, BETWEEN MAPLE ST NE & 81ST AVE NE AND
TERRANCE RD NE TO ABLE ST NE

(see plans for details)

START DATE: 05/28/2024

COMPLETION DATE: 12/31/2024

The City of Spring Lake Park reserves the right to modify the schedule as necessary in the issuance of the permit. Therefore, the dates stated on this application may not necessarily match actual approved dates.

EXPLANATION OF RESTORATION:

Right of way - 150⁰⁰

Jeff Gilbert 5/14/24

Authorized Representative Signature

Jeff Gilbert

Date 05/14/2024

FOR OFFICE USE ONLY

- PROOF OF CERTIFICATE OF INSURANCE:
- SCALED DRAWING SHOWING LOCATION
- COPY OF INSURANCE POLICIES
(If Corporation, from Secretary of State)

VERIFICATION DATE:

- LETTER OF CREDIT OR CONST. BOND
- COPY OF CERTIFICATE OF AUTHORITY
(From M.P.U.C., State, or Federal Agency)

PERMIT FEES: Excavation Hole - \$150.00
 Trench - \$70.00/100'+Hole fee

Emergency Hole - \$55.00
 Obstruction Fee - \$50.00+.05/Ft.

Receipt No.:

Date:

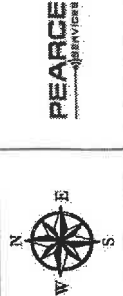
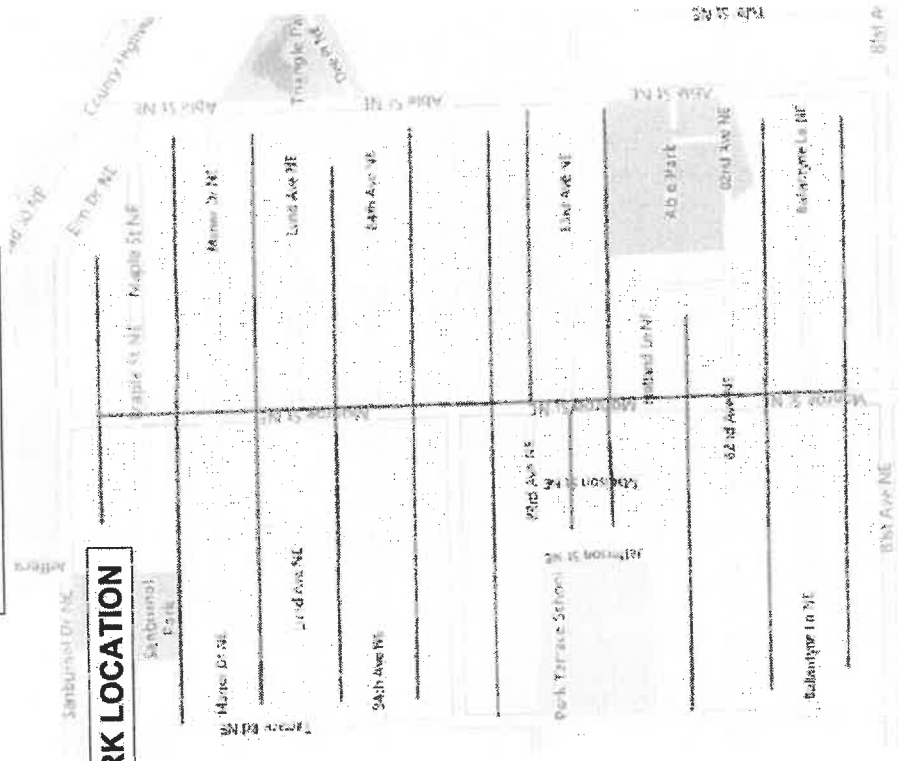
Initials:

APPLICANT MUST CONTACT THE SPRING LAKE PARK PUBLIC WORKS DIRECTOR AT 763-792-7227
48 HOURS PRIOR TO COMMENCING WORK

PROJECT ID : P.122973-A

AERIAL PERMIT

WORK LOCATION



PROJECT ID : P.122973
WIRE CENTER : BLANNBL
SCALE : NTS
DATE : 04/26/2024

LUMEN ENGINEER : ERNEST WEBER
DRAWN BY : PEARCE SERVICES / ARAVIND
SHEET : 1 OF 2

LUMEN

ADDRESS : 701 HOLLAND LN
NE, MINNEAPOLIS, MN 55432
TOWNSHIP : SPRING LAKE PARK, MN
S02-T30N-R24W
(CITY OF SPRING LAKE PARK AERIAL PERMIT)



AERIAL PERMIT

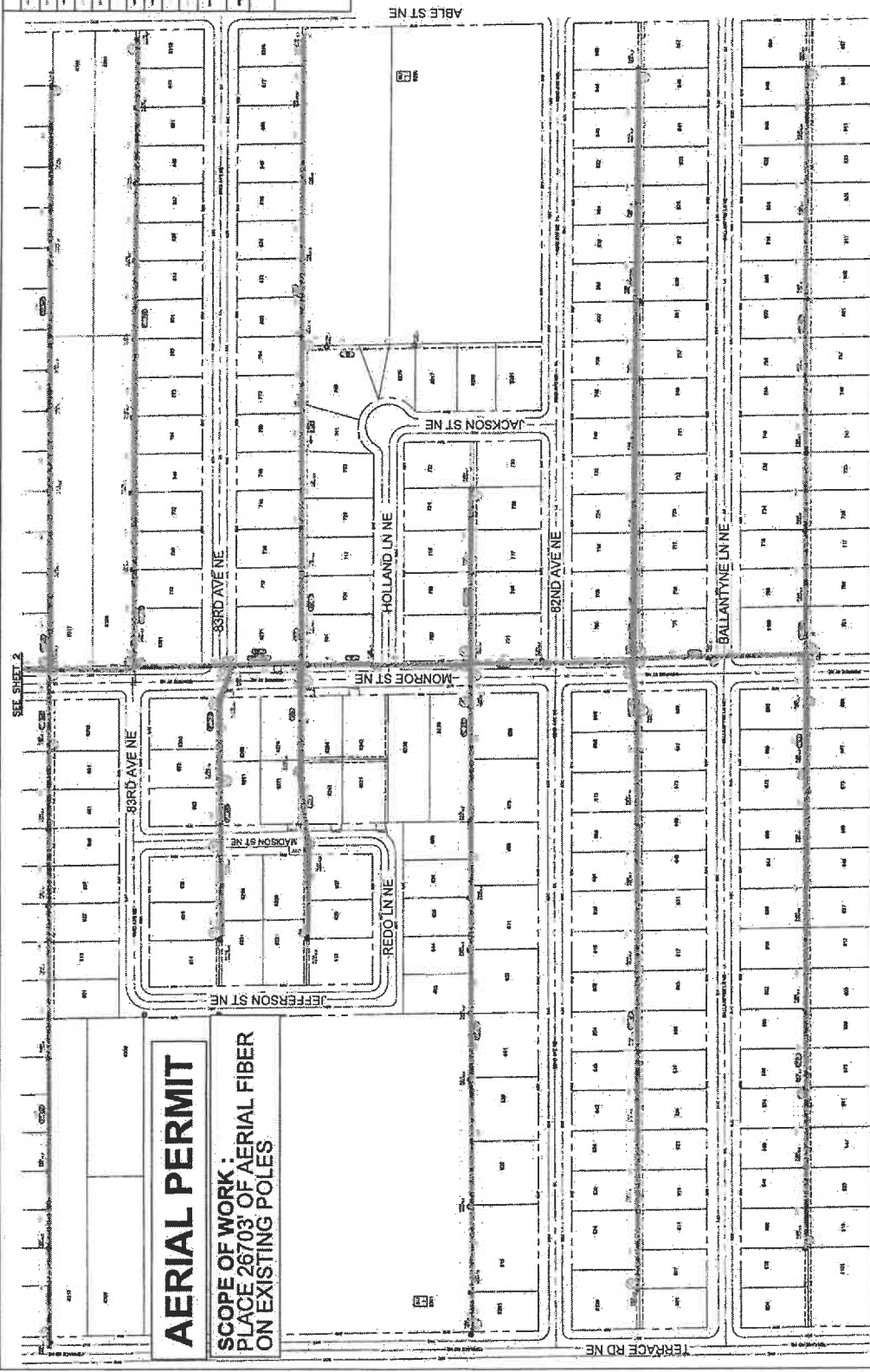
SCOPE OF WORK:
PLACE 26703' OF AERIAL FIBER
ON EXISTING POLES

LINE & SYMBOL LEGENDS	
	24F AERIAL CABLE
	48F AERIAL CABLE
	72F AERIAL CABLE
	96F AERIAL CABLE
	144F AERIAL CABLE
	216F AERIAL CABLE
	288F AERIAL CABLE
	432F AERIAL CABLE
	EXISTING FT FIBRE
	FUTURE DROP CABLE
	OHG GUY
	GENERAL BLOCKS
	AERIAL FOOTAGE
	DOWN GUY
	GENERAL POLES



		<p>PROJECT ID : P-122973 WIRE CENTER : BLANMNL SCALE : NTS DATE : 04/26/2024</p>	<p>LUMEN ENGINEER : ERNEST WEBER DRAWN BY : PEARCE SERVICES / ARAVIND SHEET 1.2 OF 2</p>	<p>LUMEN</p> <p>ADDRESS : 701 HOLLAND LN NE, MINNEAPOLIS, MN 55432 TOWNSHIP : SPRING LAKE PARK, MN S02-T30N-R24W (CITY OF SPRING LAKE PARK AERIAL PERMIT)</p>
--	--	---	--	--

LINE & SYMBOL LEGENDS	
	24F AERIAL CABLE
	48F AERIAL CABLE
	72F AERIAL CABLE
	96F AERIAL CABLE
	144F AERIAL CABLE
	216F AERIAL CABLE
	288F AERIAL CABLE
	432F AERIAL CABLE
	EXISTING F1 AERIAL
	EXISTING F1 FIBRE
	FUTURE DROP CABLE
	DHG GUY
	GENERAL BLOCKS
	AERIAL FOOTAGE
	DOWN GUY
	GENERAL POLES



AERIAL PERMIT
 SCOPE OF WORK:
 PLACE 26703' OF AERIAL FIBER
 ON EXISTING POLES

ADDRESS : 701 HOLLAND LN
 NE, MINNEAPOLIS, MN 55432
TOWNSHIP : SPRING LAKE PARK, MN
 S02-T30N-R24W
 (CITY OF SPRING LAKE PARK AERIAL PERMIT)

LUMEN

LUMEN ENGINEER : ERNEST WEBER
 DRAWN BY : GREGG SERVICES / ARAVIND
 SHEET : 3 OF 3

PROJECT ID : P-122973
 WIRE CENTER : BLANMNL
 SCALE : NTS.
 DATE : 06/26/2024

PEARCE
 CONSULTING ENGINEERS