

# Feel the Power!

A Minnesota Laborers - Employers Cooperation & Education Trust Publication

## 2023 CONSTRUCTION FORECAST

While Dodge Construction Network is forecasting construction to flatten nationally, compared to a strong year in 2022, the new year brings a fair amount of optimism in Minnesota and North Dakota with heavy, highway civil construction, energy and utility infrastructure construction sectors leading the way. Industry challenges still remain however, chain, rising interest rates and tighter labor markets locally and across the nation.

### Residential Markets

Due to rising interest rates and coming off some strong years in new construction, the residential markets will experience some decline with fewer new starts in both single family and multi-family construction. Dodge is predicting the multi-family market, a traditionally strong market for union construction in the MN and ND markets, to soften in 2023.

### Commercial Construction

From a national perspective, retail construction and the industrial markets show signs of continued optimism, with more people moving about coming out of the pandemic. Other markets within the commercial sector have not been as quick to return, thus office construction, warehouses, hotels, school construction and healthcare are forecast to soften this year.

### Heavy Highway Construction

Minnesota Department of Transportation announced a robust year of construction planned for 2023, through their construction program forecast with a record of over \$1.8 billion planned in their regular construction program. Both Minnesota (\$6.8 billion) & North Dakota (\$2.6 billion) will start seeing early benefits of the passage of the Federal Infrastructure Investment and Jobs Act (IIJA) as reported earlier. The new infrastructure law will boost construction in both states in the next 5-7 years.

### Energy & Utility Markets

The energy and utility markets will likely be strong in the coming years. The Federal Inflation Reduction Act (IRA) and IIJA will generate opportunities in a range of sectors including wind, solar, carbon capture, electric vehicle charging stations, broadband, and abandoned oil well reclamation. There are already three major carbon capture projects and pipeline networks planned in the Midwest for a total of 3,650 miles of new pipeline infrastructure. Both the IRA and IIJA have a range of incentives that increase opportunities for union signatory contractors. We expect union contractor stakeholders working in these markets will see plenty of opportunity to help build

Minnesota and North Dakota into the future.

### Water Infrastructure

Water infrastructure, including lead line replacement, waste water facilities and stormwater systems are



major areas of need for communities across Minnesota. Minnesota will receive approximately \$680 million over five years under the IIJA to address drinking water and wastewater infrastructure needs. In addition, LIUNA Minnesota and North Dakota, Conservation Minnesota, IUOE Local 49, and the

Continued on next page...

### IN THIS ISSUE

3 Trench Safety

6 Attend Benefits Day



LECET

LABORERS-EMPLOYERS  
COOPERATION & EDUCATION TRUST  
MINNESOTA & NORTH DAKOTA

LiUNA!

Feel the Power

# 2023 CONSTRUCTION FORECAST - *continued*

Coalition of Greater Minnesota Cities (CGMC) are working together to advocate for additional investments in our water infrastructure at the state legislature. We expect robust federal and state investments to



generate new work opportunities across the state replacing lead service lines, building new waste water facilities and improving stormwater infrastructure.

## Industrial Sector

LIUNA and Minnesota LECET are tracking over 250 'active' industrial project opportunities in MN & ND, covering these markets: Metals & Minerals Mining, Power – Coal, Wind, Solar, Transmission & Distribution, Alternative Fuels

in addition to Food & Beverage, Industrial Manufacturing and more.

Overall, the future is bright as Union Contractors and LIUNA members should expect to remain busy in 2023, with even more hope into the future in the public infrastructure markets. LIUNA members are reminded to get on their local union "out of work" list if they are not working, and to update their "skills cards" and broaden their skills through the Laborers Training Center curriculum.

## PAUL KRIENKE JOINS LECET BOARD

Paul Krienke, Superintendent with PCL Construction Services, has joined the LECET Board of Trustees, replacing Adam Huston (also of PCL Construction). He grew up in Lester Prairie, MN on a family dairy farm and graduated from the Construction Management program at South Dakota State University in Brookings, SD in 2008. He joined PCL prior to graduation for an internship that turned into a full time position as a field engineer and worked his way up to Superintendent.

Krienke has worked in North Dakota, South Dakota, Florida, Tennessee, and in the Twin Cities on numerous projects. Some projects include Mystic Lake Center, O'Shaughnessy Distillery, Post Consumer Brands Manufacturing Facility, and currently at the MN Zoo Treetop Trail project. He lives in Lakeville, MN with his wife and still farms with his parents on the family farm.

"I look forward in being a part of the LECET board and being able to

collaborate more with industry leaders, union representatives, and all the workers that make up our great workforce," said Krienke. "I am excited to be a part of continuing to grow our workforce and better connect with communities about the value our Laborer workforce provides."



## WELCOME NEW CONTRACTORS!

- Lake Superior Energy Company
- T Scherber Demolition & Excavating
- Total Excavating LLC

- Wheelhouse Industrial LLC
- WCT Midwest

### LECET Mission

The Minnesota Laborers-Employers Cooperation & Education Trust (LECET) fund was created in 1992 as a non-profit joint Labor/Management cooperation effort affiliated with the Minnesota Laborers Union. LECET aims to promote the many benefits of Union construction while addressing a number of initiatives that are of mutual benefit to both signatory Union Contractors and LIUNA members.

### MN LECET Board of Trustees

- |   |  |
|---|--|
| Shawn Braford, Co-chair<br><i>Laborers Local 1097</i> | Rick Peper, Chair<br><i>Ryan Companies US Inc.</i>               |
| Dan Olson<br><i>Laborers Local 1091</i>               | Andy Ristrom<br><i>Carl Bolander &amp; Sons Inc.</i>             |
| Keith Petersen<br><i>Laborers Local 563</i>           | Paul Krienke<br><i>PCL Construction Services</i>                 |
| Kim Maher Schrupp<br><i>Laborers Local 563</i>        | Laura Ziegler<br><i>AGC of Minnesota</i>                         |
| Sheldon Steele<br><i>Laborers Local 405</i>           | Randy Kramer<br><i>Bituminous Roadways Inc.</i>                  |
|   | Dwight Engen<br><i>LECET Construction<br/>Marketing Director</i> |

### Contact Us



MNLECET.org  
651.429.1600 | info@mnndlecet.org  
f MinnesotaLECET



LIUNAMinnesota.org  
651.653.9776 | Council@LiunaMinnesota.org  
f t i LIUNAMinnesota

# TRENCH SAFETY IS NEEDED RIGHT NOW

In 2022, the United States experienced 39 worker deaths due to trenching and excavation collapses, which more than doubled the number of deaths just ten years prior, according to Federal Occupational Safety & Health Administration's (OSHA) record keeping. This is completely unacceptable in an industry that strives for better safety and creating opportunities that will encourage new workers to join in.



Photo Source: United Rentals Trench Safety Division

Excavation and trenching can be among the most hazardous construction operations. The Occupational Safety and Health Administration's (OSHA) Excavation standards, 29 Code of Federal Regulations (CFR) Part 1926, Subpart P, contain requirements for excavation and trenching operations. OSHA's trenching and excavation standard requires protective systems like

sloping, shoring or shielding once a trench reaches five feet deep.

## How Can Construction Employers Prevent Trench Deaths?

The Laborers' Health & Safety Fund of North America covered these preventive measures for contractors:

- 1) Protect trenches via sloping, shoring and shielding.
- 2) Make it clear workers should refuse to enter any unsafe trench.
- 3) Have a trench safety-trained competent person on site.
- 4) Follow other trench requirements and best practices.

The Laborers Training Center offers an **8-hour Excavation Confined Space** training course for LIUNA members, while Signatory Contractors may visit [LHSFNA.ORG](http://LHSFNA.ORG) to order any of the Fund's publications on trench safety free of charge, including toolbox talks, health alerts and pocket guides. These resources can help workers identify unsafe trenches, know the safety procedures to prevent trench collapses and ensure compliance with OSHA's trench standard.

In addition, Minnesota LECET has organized **Safety Seminars** with presentations by leading trench safety experts. There is still time to register for one of our remaining Safety Seminars in Rochester (Feb. 8) or Virginia (Feb. 15).

"Trench collapses are usually caused by speed being prioritized over safety," said Terry O'Sullivan, LIUNA General President. "Saving time on a project by cutting corners is never worth risking the safety and health of even one LIUNA member. Protecting trenches is the law because trench collapses are easily preventable and taking that time saves lives."

With infrastructure construction work expected to increase substantially due to funding from the IIJA Law, contractors, there will be even more excavations and trenches needed to get this important work done. Contractors, Laborers and industry stakeholders must take immediate action to improve safety in the trenches and save lives.

## SAFETY SEMINARS ANNOUNCED

Minnesota LECET has scheduled four new Safety Seminars in 2023. The first three are dual-session Seminars and will cover Trench Safety and a review of the Minnesota Laborers Fringe Benefit Funds for Union contractor employers.

These professionally-led seminars are free for union contractor participants with lunch provided and a certificate of attendance.

**REGISTER**

(651) 429-1600

[info@mnndlecet.org](mailto:info@mnndlecet.org)

### TRENCH SAFETY & LABORERS BENEFITS REVIEW FOR UNION CONTRACTORS

**January 26, 2023 – 10 AM-Noon**

Laborers Training Center – Lino Lakes, MN

**February 8, 2023 – 10 AM-Noon**

Eagles Club – Rochester, MN

**February 14, 2023 – 10 AM-Noon**

Iron Trail Motors Event Center – Virginia, MN

### WHAT'S NEW IN PERSONAL PROTECTIVE EQUIPMENT & MINI TRADE SHOW

**March 31, 2023 – 9AM**

Laborers Training Center\* – Lino Lakes, MN

*\*In conjunction with the Annual Union Contractor Open House and Safety Driven Awards event.*

# POSITIVE SIGNS FOR UNION CONSTRUCTION

There are good signs for Union members working in the construction industry pertaining to Union favorability and worker safety.

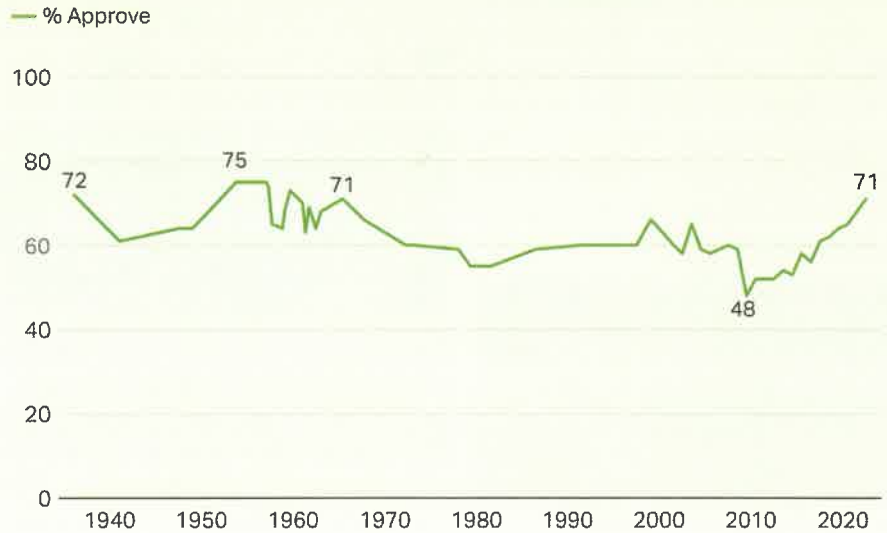
One published report is an impressive sign of favorability of Laborer Unions as a whole in America. A recent Gallup study notes that U.S. approval of Labor Unions has reached its highest point since 1965. **Moreover, 71% of Americans now approve of Labor Unions**, with 40% of actual members saying their Union membership is “extremely important” to them.

Union workers noted better pay and benefits as the top reason for joining a Labor Union in addition to having better representation and worker rights. Better representation and worker rights were relatively close behind. The survey noted job security, better pension/retirement, improving the work environment, fairness and equality at work and better health and safety as leading reasons to be a part of a Labor union.

In addition, worker safety is continually proving to be a positive benefit of Union construction. A 2021 study by the Illinois Economic Policy Institute involving eight major construction sectors and all 10 OSHA regions confirmed that Union construction sites have a superior

## Americans' Approval of Labor Unions, 1936-2022

Do you approve or disapprove of labor unions?



Source: Gallup

safety record over non-union sites. The study examined data on more than 37,000 OSHA Inspections from 2019 and found the following:

- Union jobsites were 19% less likely to have health and safety violations than non-union sites.
- When safety violations were present, OSHA issued 34% fewer violations per inspection.
- Union construction makes up 14% of the construction industry but only 5% of OSHA violations.

As the construction industry moves forward and the workforce challenge exists among all industries, the Union construction model rises up when it comes to many factors American workers are looking for: pay, benefits, security, representation, safety and training.



# 2023 LECET SCHOLARSHIP PROGRAM ANNOUNCED

The Minnesota Laborers – Employers Cooperation & Education Trust (LECET) Scholarship/Leadership Grant Program is available to eligible candidates looking to advance in the construction industry. Awards are in the amount of \$1,000 for eligible candidates covering two separate programs:

## FOR UNION CONTRACTOR'S STAFF AND LIUNA MEMBERS & FAMILIES:

**Academic Scholarship Program:** For candidates currently enrolled in a higher education program or institution with a declared major in an approved construction-related program. Eligible candidates include: Signatory Union Contractor staff/ interns and current LIUNA members and their eligible dependents.

## FOR LIUNA MEMBERS ONLY:

**Leadership Grant Program:** Designed specifically for current LIUNA MN & ND members who are seeking to advance in the construction industry through specialized training, higher educational programs or certifications not currently offered at the Laborers Training Center\*.

*\*The Laborers Training Center offers over 70 class offerings to members including supervisory courses. Members should contact the LTC for more information.*

### FOR INFORMATION:

[www.mnlecet.org](http://www.mnlecet.org)  
(651) 429-1600  
[info@mndlecet.org](mailto:info@mndlecet.org)

**Applications are due by  
June 30, 2023**

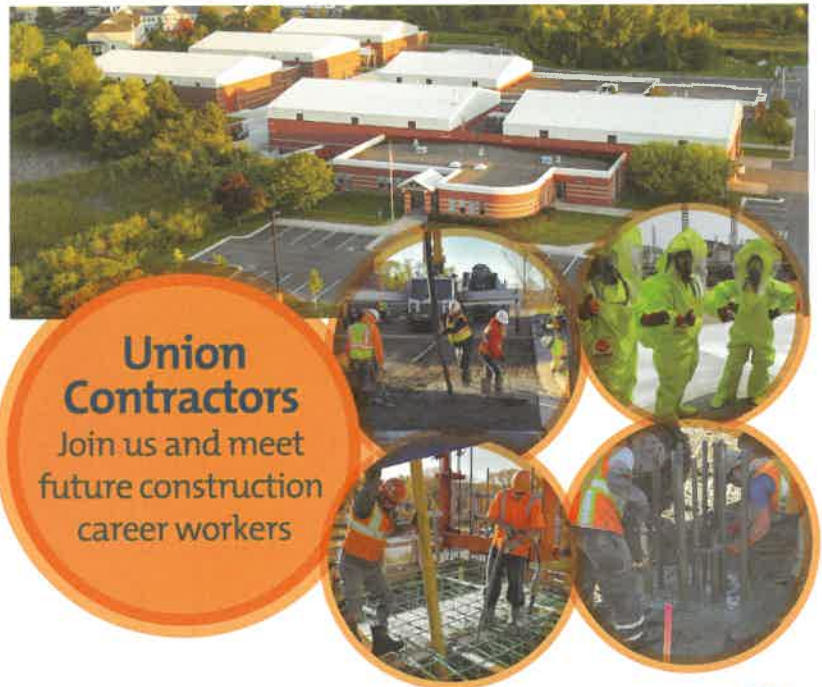
## CAREER FAIRS PLANNED

Minnesota LECET and LIUNA are planning three construction career fairs with Union contractors in 2023 to help expose future potential candidates to the construction industry

**IMPORTANT:** These career fairs are geared for new-to-the-industry candidates who want to learn more about opportunities in the construction trades and are not intended for the regular LIUNA membership.

Union contractors interested in setting up a table top display and meeting interested construction career candidates at these events should contact Minnesota LECET at [info@mndlecet.org](mailto:info@mndlecet.org).

## LiUNA Career Fairs



**Union Contractors**  
Join us and meet  
future construction  
career workers

### Career Fairs

**April 5, 2023 – 3-7PM**  
Eagles Club – Rochester, MN

**April 6, 2023 – 2-7PM**  
Kato Ballroom – Mankato, MN

**March 15, 2023 – 9-1PM**  
Laborers Training Center – Lino Lakes, MN





# SAVE THE DATE!

## RESERVA LA FECHA!

**SATURDAY, APRIL 1st, 2023, 9 am - 1 pm**

**AT THE LABORERS TRAINING CENTER (LTC) - 2350 MAIN STREET, LINO LAKES, MN 55038**

*Meet with your your key providers at the 2023 Benefits Day!*



## SAFETY DRIVEN | THE POWER OF PARTNERSHIP

3rd Quarter 2022 Safety Driven Quarterly Award Winners

LABORER	CONTRACTOR	LABORER	CONTRACTOR
Shawn Lee	Ames Construction Inc	Jeremy Panek	Kuechle Underground Inc
Marcus Kenall	Aptim Services	Jose Pascasio Rumbo	Lloyd's Construction Services, Inc
Thomas Oeltjen	Benike Construction	Jeremy Heibel	Michels Corporation
Mike Kocina	Bituminous Roadways Inc	Charles Nettleton	Northland Constructors
Jason Ellis	Carl Bolander & Sons	Tod Raymond	Northwest Asphalt Inc
Jason Vanryn	Corval Group	Jacob Nolder	Q3 Contracting Inc
James Kuhlman	Hammerlund Construction	Jesse Kowarsch	Restoration Systems Inc
Bruce Langlie	Johnson-Nelson Masonry	Tim McGee	Trade Access
Chad Kloss	Kiffmeyer Inc	Teddy Melton III	Ulland Brothers
Todd Jorgenson	Kraus Anderson	Brian Goranson	Xcel Energy Special Construction

*All winners receive their choice of a Quarterly Award prize and have been nominated by Union Contractors in accordance with the LECET Safety Driven Program rules.*

### APPRENTICE OF THE MONTH AWARDS

October

**Max Ferrin**

November

**Rigoberto Munoz**

December

**Briana Cain**

*Note: Students are reminded that all day classes begin at 7:00 am at the LTC. Trainees must come to class dressed as if they were reporting to work at a construction site. This includes appropriate work boots, long pants and shirt. Failure to do so can result in being asked to leave and to reschedule the class at a later date.*

### CONSTRUCTION LABORERS TRAINING CENTER

2350 Main Street  
Lino Lakes, MN 55038

(651) 653-6710

www.Ltcmn.org

#### February 6, 2023

Asbestos Worker Initial	Feb 06-09
Blueprint Reading	Feb 06-16
Blueprint Reading - Virginia, MN - 1097 Hall	Feb 06-10
General Construction/Flagging/Pro-10	Feb 06-10
Heavy Highway Skills/MnDOT Flag	Feb 06-10
Line & Grade I	Feb 06-10
Mason Tending	Feb 06-10
Pipeline Technology/MnDOT Flagging	Feb 06-10
Safety Week/OSHA 30/CPR First Aid	Feb 06-10
Asbestos Worker Refresher	Feb 10
Mine Safety & Health Admin - Virginia, MN - 1097 Hall	Feb 11

#### February 13, 2023

Asbestos Supervisor Initial	Feb 13-17
Blueprint Reading	Feb 13-17
Concrete Practices/Insulated Forms	Feb 13-17
Pipelaying 2	Feb 13-17
Safety Week/OSHA 30/CPR First Aid	Feb 13-17
Suspended Scaffold Preparedness	Feb 13-15
Welding/Torch Cutting Air Arc	Feb 13-Mar 17
CPR/First Aid - Duluth, MN - 1091 Hall	Feb 14
Excavation Confined Space - Duluth, MN - 1091 Hall	Feb 15
Hazardous Waste Refresher - Duluth, MN - 1091 Hall	Feb 16
Intro to Union & Apprenticeship Program	Feb 16
Intro to Union & Apprenticeship Program - Online Training	Feb 16
Asbestos Supervisor Refresher WI/MN - Duluth, MN - 1091 Hall	Feb 17
Mine Safety & Health Admin - Duluth, MN - 1091 Hall	Feb 18

#### February 20, 2023

Hazardous Waste Refresher - St. Cloud, MN - 563SC Hall	Feb 20
Air Sampling	Feb 20-21
General Construction/Flagging/Pro-10	Feb 20-24
Line & Grade II	Feb 20-24
Mason Tending	Feb 20-Mar 02

Plaster Tending	Feb 20-24
Safety Week/OSHA 30/CPR First Aid	Feb 20-24
Torch Cutting Demo Safety	Feb 20-21
Excavation Confined Space - St. Cloud, MN - 563SC Hall	Feb 21
CPR/First Aid - St. Cloud, MN - 563SC Hall	Feb 22
Infection Control Risk Assessment (ICRA)	Feb 22-23
Rigging & Signaling Qualified - 24 Hr	Feb 22-24
Mine Safety & Health Admin - St. Cloud, MN - 563SC Hall	Feb 23
Asbestos Inspector Refresher	Feb 24

#### February 27, 2023

CPR/First Aid	Feb 27
General Construction/Flagging/Pro-10	Feb 27-Mar 03
Hazardous Waste Initial	Feb 27-Mar 03
Mason Tending	Feb 27-Mar 03
Safety Week/OSHA 30/CPR First Aid	Feb 27-Mar 03
Safety Week/OSHA 30/CPR First Aid - Rochester, MN - Eagles Club	Feb 27-Mar 03
Scaffold Erecting Competent Person	Feb 27-Mar 03
Excavation Confined Space	Feb 28
Hazardous Waste Refresher	Mar 01
Fall Protection	Mar 02
Intro to Union & Apprenticeship Program - Rochester, MN - Eagles Club	Mar 02
Asbestos Worker Refresher	Mar 03
Lead Supervisor Refresher	Mar 03
Mine Safety & Health Admin - Grand Rapids, MN	Mar 04

#### March 6, 2023

Asbestos Worker Initial	Mar 06-09
Blueprint Reading	Mar 06-10
General Construction/Flagging/Pro-10	Mar 06-10
Heavy Highway Skills/MnDOT Flag	Mar 06-10
Pipelaying 1	Mar 06-10
Safety Week/OSHA 30/CPR First Aid	Mar 06-10
Safety Week/OSHA 30/Msha 24/CPRFA - Duluth, MN - 1091 Hall	Mar 06-10
Scaffold Erecting Competent Person	Mar 06-16
Intro to Union & Apprenticeship Program - St. Cloud, MN - 563SC Hall	Mar 09
Mine Safety & Health Admin - Duluth, MN - 1091 Hall	Mar 11

## LABORERS TRAINING CENTER UPDATES

The LTC hired two new seasonal instructors: **Sean Jeffrey**, from St. Michal, MN, is a 23-year LIUNA member who brings a strong background in the environmental industry. **Benjamin Long**, from Forest Lake, MN, joined LIUNA in 2013 and will use his expertise instructing members construction scaffolding. Both will train on other training center courses.

**Gas Fusion – 8 hour** is a new course offering at the LTC. This course is not shown in the published 2023 training calendar. Laborer Trainees will be instructed on the theory of polyethylene pipe fusion, the techniques utilized in butt fusion, saddle fusion, electro fusion and testing procedures. Laborers should

call the LTC for more information, schedule and to register. Requirements: none.

The LTC is now offering Online Theory Training to help Union Laborers obtain a **Commercial Driver's License (CDL)**. This training is not open to all Laborers and is a unique partnership with the Union Contractor employers. **The Laborer Trainee must be sponsored by their signatory employer or have the approval of their Business Manager.** A signed **CDL Entry Level Driver Training (ELDT) Sponsorship Form** must be used for enrollment. Laborer trainees must meet state regulations including completion of a DOT physical. Please contact the LTC for more information.

**A Landscape Concepts & Principles Training – 40 hour** course is now being offered at the LTC. Laborer trainees will get hands-on training including lectures and demonstrations to work safely in the landscape construction industry.

### MN & ND Training by The Numbers:

- 303** LTC apprenticeship graduates in 2022
- 3065** Number of current registered apprentices in LIUNA apprenticeship program
- 95** New apprentices in North Dakota

Minnesota Laborers-Employers  
Cooperation & Education Trust-LECET  
81 East Little Canada Road  
Little Canada, MN 55117



\*\*\*\*\*AUTO\*\*ALL FOR AADC 553

City Administrator  
City Of Spring Lake Park  
1301 81st Ave NE  
Spring Lake Park MN 55432-2188

T73 P1  
14221

3

## WINTER DRIVING TIPS

By Ben Weideman, LIUNA Minnesota & North Dakota

It's that time of year again when winter driving is upon us. Driving in the winter can be a challenge with snow, sleet, and ice causing extremely dangerous road conditions, jeopardizing your health and well-being. Before you hit the road **CHECK THESE WINTER DRIVING TIPS:**

**MAINTAIN:** Always maintain a full tank of fuel. Make sure that your regular vehicle maintenance is current before hitting the roads. This especially includes your battery, wiper, washer fluid, engine coolant and good tires (tire pressure). Stock your vehicle with blankets, flashlights, jumper cables, shovel and flares or emergency lights.

**PREPARE:** Prepare for an emergency, such as a spin out, crash or vehicle break down. Be mindful of carbon monoxide poisoning; keep the exhaust pipe clear of snow and only running vehicle sporadically to keep warm. Keep fresh air always in your vehicle. In an emergency, stay with your vehicle and use flashers or emergency lights.

### DRIVING:

- Completely CLEAR vehicle of snow (including roof) and scrape/defrost all windows for good visibility
- BUCKLE UP – yourself and all passengers for safety



Photo Source: US Dept of Transportation - National Highway Traffic Safety Administration

- **DRIVE APPROPRIATELY** for winter road conditions, understanding they can change quickly
- Road conditions can be **DECEPTIVE**; watch for black ice, icy bridge decks and ramps
- Increase your following distance and note that stopping time could **DOUBLE**
- Heavy duty trucks, vans, SUV's, All-Wheel Drive vehicles often give a **FALSE SENSE** of security

Make sure to plan your trips having a good plan of action for wintry conditions. Following these tips, will help improve safety for you and others on the road. Always remember that "Safety is No Accident".