



## City of Spring Lake Park 2022 Truth in Taxation Hearing

### City Council

Bob Nelson, Mayor

Ken Wendling

Brad Delfs

Barbara Goodboe-Bisschoff

Lisa Dircks

December 6, 2021

### Purpose of TNT Hearing

- Required under M.S. 275.065
- Provide information on 2022 proposed budget and tax levy
- Provide opportunity for residents to share feedback on the proposed budget and tax levy
- This is not the time to discuss your estimated market value. That occurs during the Open Book Assessment process in April.

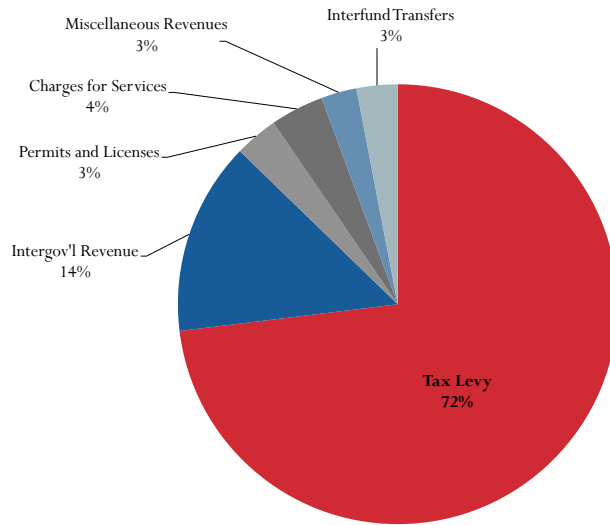
## 2022 Budget Process

- June 2021                      Department Heads Draft Departmental Budgets
- July 2021                      Department Heads Present Budgets to Administrator
- August 9, 2021              Administrator Presents Proposed Budget to City Council
- September 7, 2021        Council Approves Preliminary Budget/Tax Levy
- December 6, 2021        TNT Hearing
- December 20, 2021      Council Approves Final Budget/Tax Levy

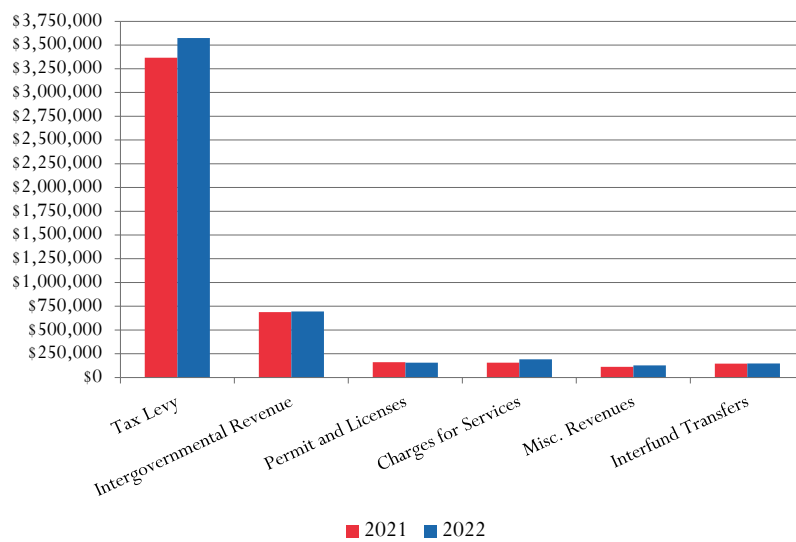
## Why Does My Property Tax Bill Vary From Year to Year

- Market Value Changes
- Budgets and Levies of Various Jurisdictions
- Special Assessments
- Change in Property Class
- Voter Approved Referendums
- Changes in Federal and State Mandates
- Changes in Aid and Revenue from State/Federal Government
- State Legislative Changes

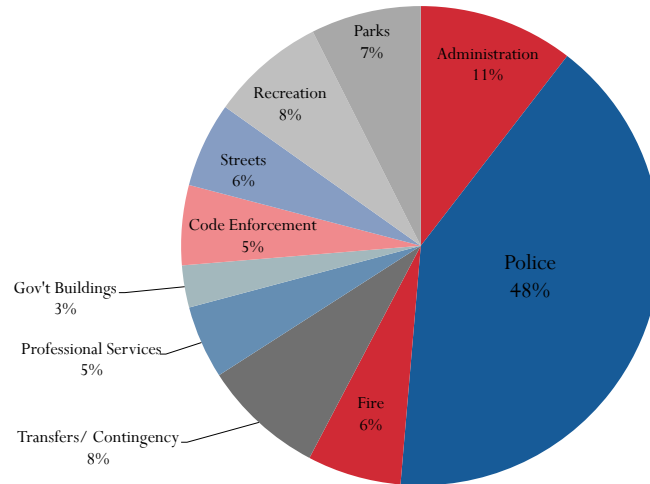
## 2022 General Fund Revenues



## Revenue Comparison

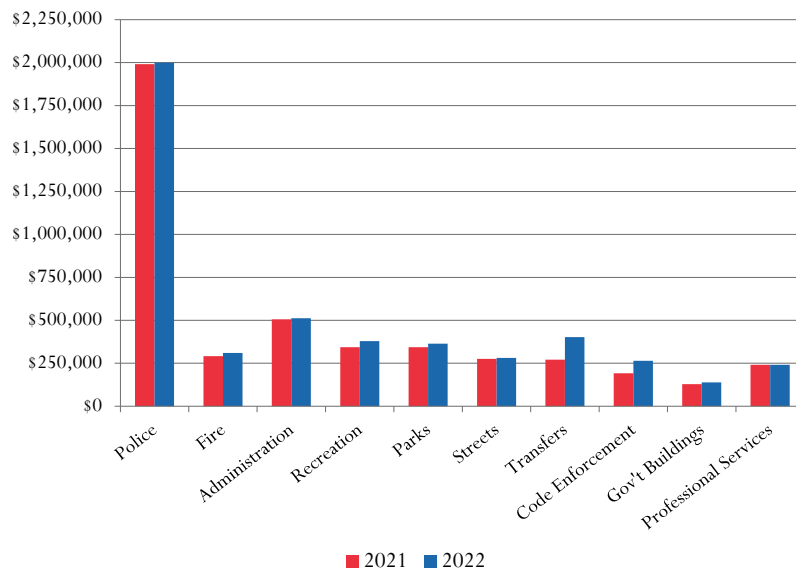


## 2022 General Fund Expenditures



**Notes:** Public Safety is Police and Fire; Administration includes City Council expense; Professional Services is Assessor, Auditor, Engineering, I.T., Legal and Planning & Zoning.

## Expenditure Comparison



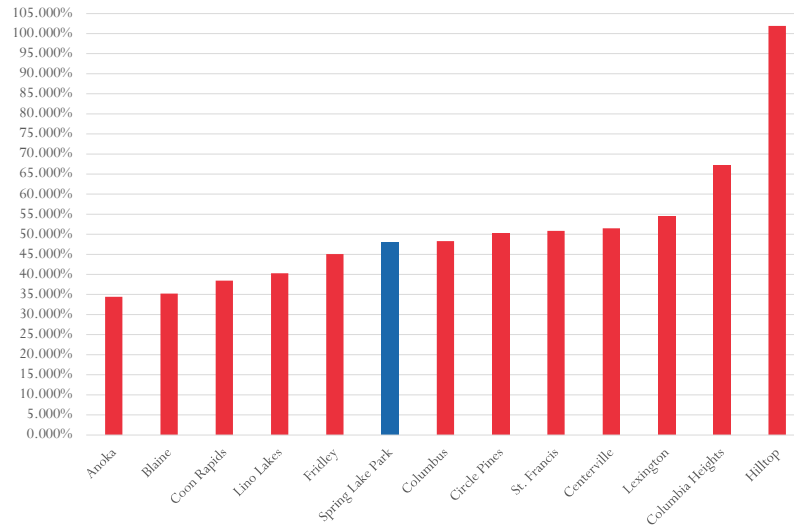
## 2022 Budget Highlights

- Proposed 2022 Levy is \$3,829,837, an increase of 5.46%
  - General Government levy increase is 6.13%
  - Debt service levy decrease is (3.00%)
- General Fund revenues are anticipated to increase by 5.59%
- Overall General Fund spending is set to increase by 6.73%
- City's tax rate will increase from 44.810% in 2021 to 47.885% in 2022

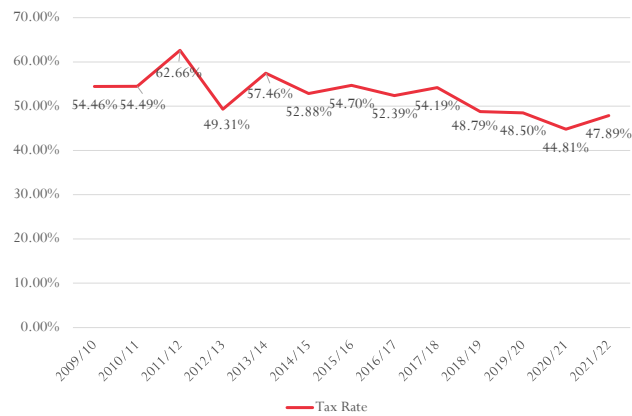
## 2022 Budget Highlights

- Proposed 2022 Budget adds a new Firefighter/Code Enforcement Inspector position.
  - Serves as a daytime fire responder, improving SBM Fire Department daytime response in Spring Lake Park
  - Conducts rental housing inspections, investigates code and nuisance violations, conducts commercial fire inspections.
- Implementation of Compensation and Classification Study
  - Last compensation and classification study done in 1999
  - Labor market has changed dramatically over the past 20 years
  - City Council recognizes that the City's employees are one of its greatest assets and efforts should be made to retain quality employees to provide the services residents expect.

### Proposed 2022 Tax Rates for Select Anoka County Cities



### Spring Lake Park Historical Tax Rate



## Revenue Detail

Revenue by Category	2021 Budget	2022 Budget	% Chg.
Property Taxes	\$ 3,366,932.00	\$ 3,573,295.00	6.13%
Intergovernmental Revenue (LGA, PERA Aid, Court Fines)	\$ 689,048.00	\$ 694,424.00	0.78%
Permits and Licenses (Liquor, Sign, Bldg, Rental, etc)	\$ 160,562.00	\$ 155,462.00	(3.18%)
Charges for Current Services (Zoning Fees, Gambling Tax, Alarm Calls, Rental Housing)	\$ 156,763.00	\$ 192,220.00	22.62%
Miscellaneous Revenues (Ins. Dividends, Admin Fines, Liaison Officer Contract)	\$ 112,784.00	\$ 128,034.00	13.52%
Interfund Transfers (Liquor, Public Utilities, Recycling)	\$ 145,666.00	\$ 147,230.00	1.07%
<b>TOTAL</b>	<b>\$ 4,631,755.00</b>	<b>\$ 4,890,665.00</b>	<b>5.59%</b>

## Expenditure Detail

Expenditure by Department	2021 Budget	2022 Budget	% Chg.
Council	\$ 70,740.00	\$ 71,635.00	1.27%
Administration	\$ 435,118.00	\$ 440,211.00	1.17%
Government Buildings	\$ 128,571.00	\$ 138,747.00	7.91%
Police Department	\$ 1,990,890.00	\$ 1,999,554.00	0.44%
Fire Protection	\$ 291,710.00	\$ 309,995.00	6.27%
Code Enforcement	\$ 191,404.00	\$ 263,963.00	37.91%
Streets	\$ 275,616.00	\$ 280,824.00	1.89%
Recreation	\$ 343,498.00	\$ 378,550.00	10.20%
Parks	\$ 343,601.00	\$ 363,691.00	5.45%
Professional/ Contractual Services (assessor, auditor, legal, engineering, IT, P&Z)	\$ 240,670.00	\$ 241,080.00	0.02%
Miscellaneous (transfers, contingency)	\$ 270,500.00	\$ 402,415.00	48.77%
<b>TOTAL</b>	<b>\$ 4,582,318.00</b>	<b>\$ 4,890,665.00</b>	<b>6.73%</b>

## What Do You Get for Your Spring Lake Park Tax Dollar?



A \$180,900 home generates \$765.69 in annual City property taxes: This comes to \$63.80 per month for 2022.

**What could you purchase for \$63.80/month?**

### ONE OF THESE...

- ☒ One month of cable service
- ☐ Dinner for two
- ☐ Movie and snacks for a family of four
- ☐ One month at a gym
- ☐ Cell phone bill

### ALL OF THESE...

- ☒ 24 hour Police Protection
- ☒ 24 hour Fire Protection
- ☒ Paved/Maintained City Streets
- ☒ Snow/Ice Removal
- ☒ Tree Trimming
- ☒ Animal Control
- ☒ Stormwater System
- ☒ Code Enforcement
- ☒ Zoning Service
- ☒ Recreation Programs
- ☒ Well Groomed Parks
- ☒ Staffed Skating Rinks
- ☒ Elections
- ☒ And More...

## 2022 Property Tax Levy

Revenue by Category	2021 Budget	2022 Budget	% Chg.
General Operations	\$3,366,932.00	\$3,573,295.00	6.13%
Debt Service	\$ 264,485.00	\$ 256,542.00	(3.00%)
<b>TOTAL</b>	<b>\$3,631,417.00</b>	<b>\$3,829,837.00</b>	<b>5.46%</b>

Questions?



*Thank You For Attending!*