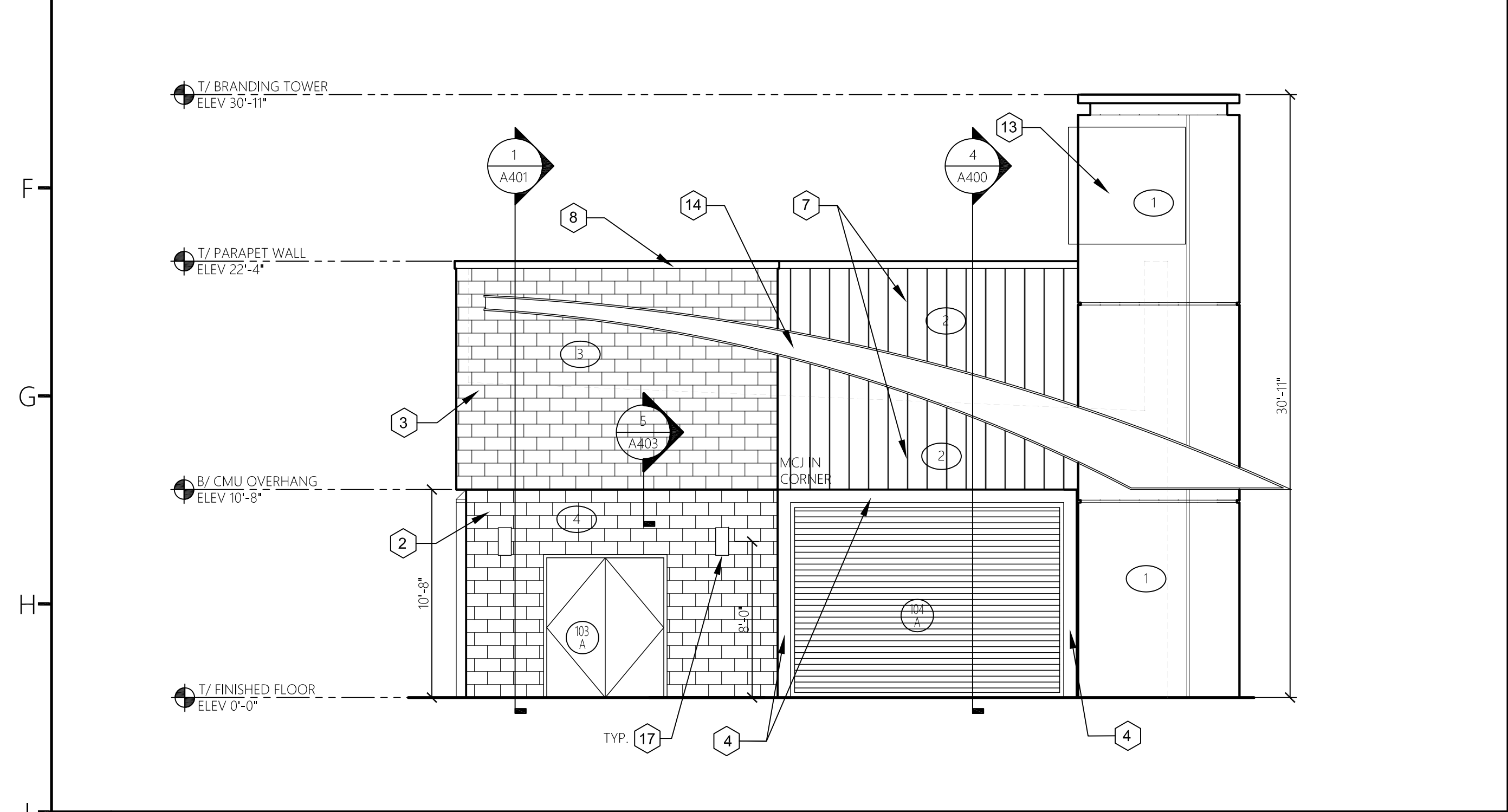
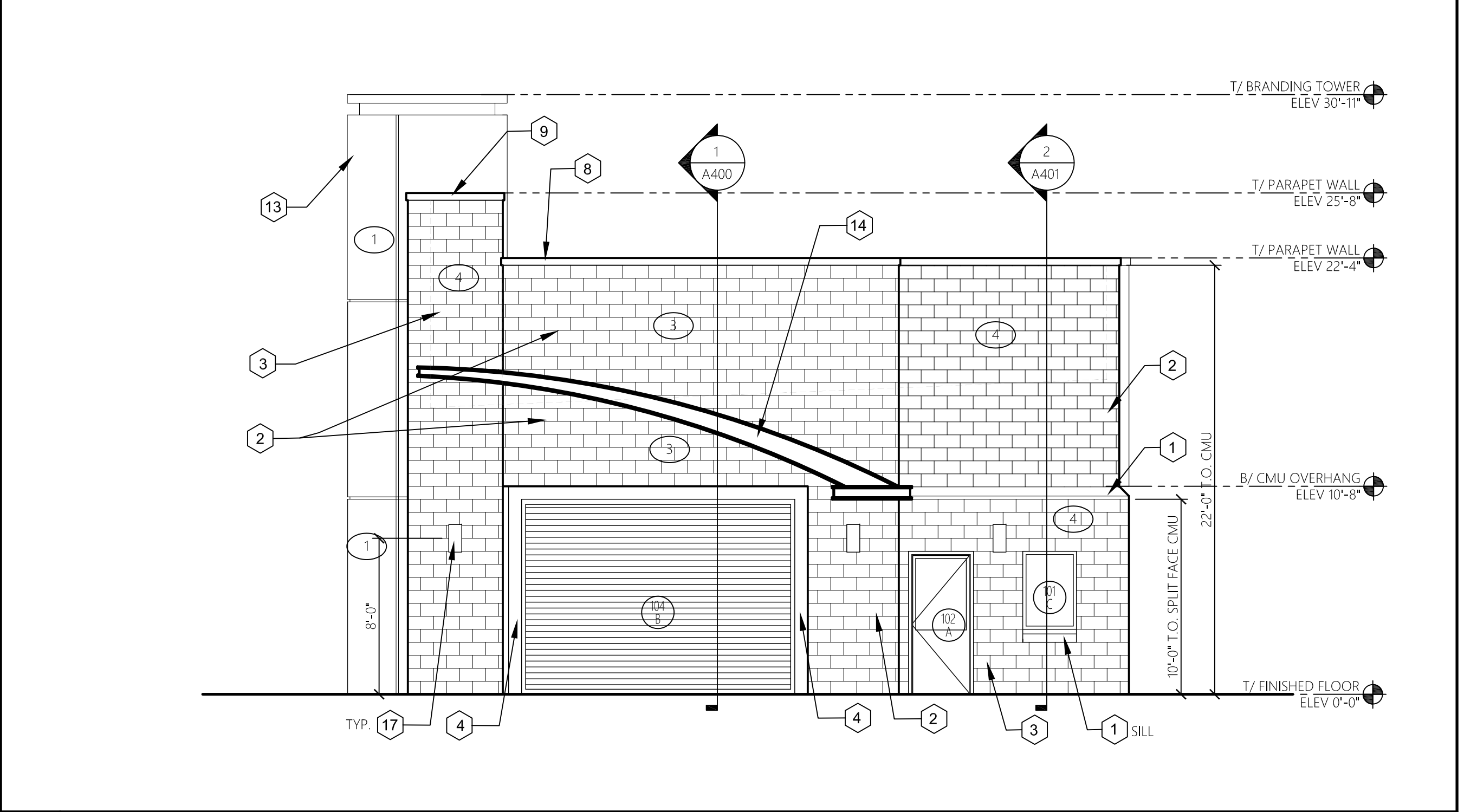


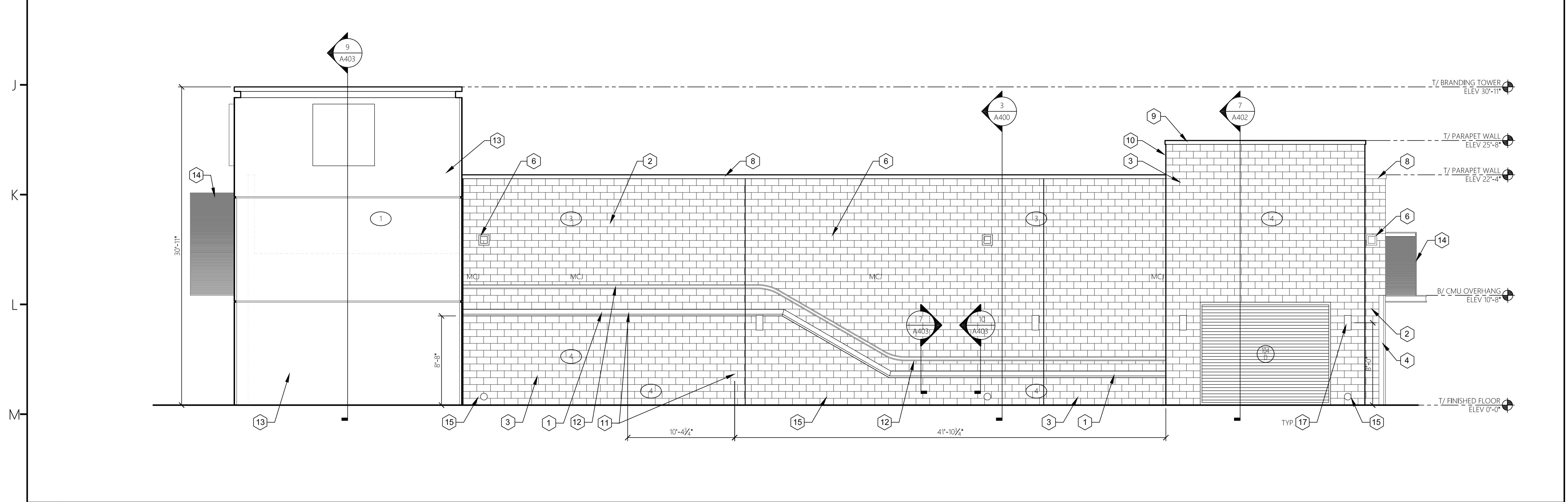
1 ELEVATION 3/16" = 1'-0"



2 ELEVATION 3/16" = 1'-0"



3 ELEVATION 3/16" = 1'-0"



4 ELEVATION 3/16" = 1'-0"

**ELEVATION KEYNOTES**

- 1 PRECAST CONC WATERTABLE
- 2 SMOOTH FACE CMU
- 3 SPLIT FACE CMU VENEER
- 4 STEEL TUBE FRAME AT OVERHEAD DOORS, PAINT TO MATCH SW 7020 BLACK FOX
- 5 TPO MEMBRANE ROOF SYSTEM, REFER TO ROOF PLAN A104
- 6 .050 X 8"W X 8"H PARAPET OPENING WITH PRE-FINISHED ALUM METAL COLLAR (2" W X 1" PROJ) BRONZE ANODIZED FINISH
- 7 CENTRIA (OR EQUIVALENT) PRE-FINISHED ALUMINUM CONCEALED FASTENER SIDING COMPLETE W/ DRIP FLASHING AND CLOSURES
- 8 PREFORMED PRE-FINISHED ALUM. COPING WITH CONT. HOLD DOWN CLIPS ON BOTH SIDES OF THE PARAPET, FINISH: DARK BRONZE; REFER TO SPECIFICATIONS 07 54 00 FOR MORE INFORMATION
- 9 PREFORMED PRE-FINISHED ALUM. GRAVEL STOP WITH BAKED ENAMEL FINISH AND CONT. HOLD DOWN CLIPS ON FRONT SIDE OF PARAPET
- 10 EXPOSED SIDEWALL AT TOWER TO RECEIVE JAMES HARDIE FIBER CEMENT ARTISAN V GROOVE SIDING, 8.25" X12" PRIMED, PAINT TO MATCH 4 X 8 H X 16 SPLIT FACE CMU VENEER W/ DRYBLOC ADDITIVE, DARK GRAY COLOR. SEALANT BETWEEN CMU AND SIDING
- 11 MITER CUT PRECAST CONC WATERTABLE TO FIT SLOPE
- 12 SIDEWALL GRAPHIC STRIP FURNISHED BY OWNER INSTALLED BY CONTR
- 13 ACM PANEL FINISH ON HDO BACKING SYSTEM; REFER TO SHEET A403 FOR ADDITIONAL DETAILS; FINISH BY MANUF.
- 14 CANOPY BY SIGNAGE VENDOR
- 15 6" DIA PVC DOWNSPOUT, RELEASE MIN 6" ABOVE GRADE (VERIFY WITH CIVIL)
- 16 TOWER BEYOND
- 17 WALL SCENCE; REF. FIXTURE SCHEDULE

**GENERAL NOTES**

- A. CONTRACTOR TO COORDINATE WITH FIRE MARSHALL FOR REQUIREMENTS OF ADDRESS NUMBER.
- B. BUILDING SIGNAGE UNDER SEPARATE PERMIT. CONTRACTOR TO OBTAIN FINAL SIGNAGE DRAWINGS FOR BUILDING SIGNAGE UNDER SEPARATE PERMIT. CONTRACTOR TO OBTAIN FINAL SIGNAGE DRAWINGS FOR CONFIRMATION OF ELECTRICAL ROUGH-IN PRIOR TO THE COMMENCEMENT OF WORK. SEE ELECTRICAL.
- C. REFER TO LOW VOLTAGE PLAN FOR SECURITY PLAN, COORDINATE FINAL LOCATIONS OF CAMERAS WITH THE OWNER PRIOR TO THE COMMENCEMENT OF WORK.
- G. UNLESS NOTED OTHERWISE, MASONRY CONTROL JOINTS SHALL BE LOCATED SUCH THAT NO STRAIGHT RUN OF MASONRY EXCEEDS 24'-0". REFER TO GENERAL STRUCTURAL NOTES ON S0.01.
- F. REFER TO DOOR AND WINDOW SCHEDULE ON A500 FOR DOOR AND FRAME FINISHES AND WINDOW GLASS TYPE AND FRAME FINISHES.

**EXTERIOR FINISH SCHEDULE**

NO.	AREA	COLOR
1	TOWER	BY MANUF. MATCH SW 6169, SEDATE GRAY
2	METAL PANELS	BY MANUF. 1760 LIMESTONE
3	ACCENT CMU	MATCH SW COLOR #6169, SEDATE GRAY
4	DARK CMU	MATCH SW COLOR # 7020, BLACK FOX

ARCHITECT OF RECORD:  
DUSTIN CURTIS  
MINNESOTA REGISTERED  
ARCHITECT  
8801 N. CENTRAL AVE. SUITE 101  
PHOENIX, ARIZONA 85020  
PHONE: 602.266.2712

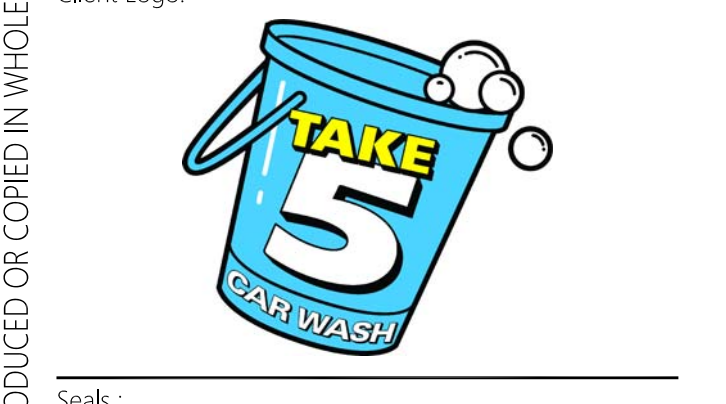
OWNERS REPRESENTATIVE:



**COR3 Design, LLC**  
Commercial, Office, Retail, Restaurant, Real Estate Development  
201 RiverPlace  
Suite 401  
Greenville, SC 29601  
Phone: 864.451.5288  
Fax: 864.990.3085  
www.cor3design.com

Consultants:  
**STRUCTURAL**  
Ernest D. Gunter  
1350 C Cleveland Street  
Greenville, SC 29607  
864.235.3580  
**PLUMBING**  
Dustin Curtis  
8801 N. Central Ave. Suite 101  
Phoenix, Arizona 85020  
602.266.2712  
**ELECTRICAL**  
Hugh P. Burns, P.E.  
912 S Pine Street  
Spartanburg, SC 29302  
864.583.6274

Project Title:  
**TAKE 5 CAR WASH**  
SPRING LAKE PARK  
MN  
8301 UNIVERSITY AVE NE  
SPRING LAKE PARK, MN



Revisions:  
03.04.2022 Issue for Permit

Project Number:  
21110  
Phase:  
CD  
Date:  
03.04.2022  
Drawn By:

Checked By:  
Sheet Number:  
**A200**  
Sheet Title:  
ELEVATIONS

THIS DRAWING IS THE PROPERTY OF COR3 DESIGN, LLC AND IS COPY RIGHT PROTECTED. IT IS NOT TO BE REPRODUCED OR COPIED IN WHOLE OR IN PART. IT IS ONLY TO BE USED FOR THE PROJECT AND SITE SPECIFICALLY IDENTIFIED HEREIN AND IS NOT TO BE USED FOR ANY OTHER PROJECT. IT IS TO BE RETURNED UPON REQUEST.