



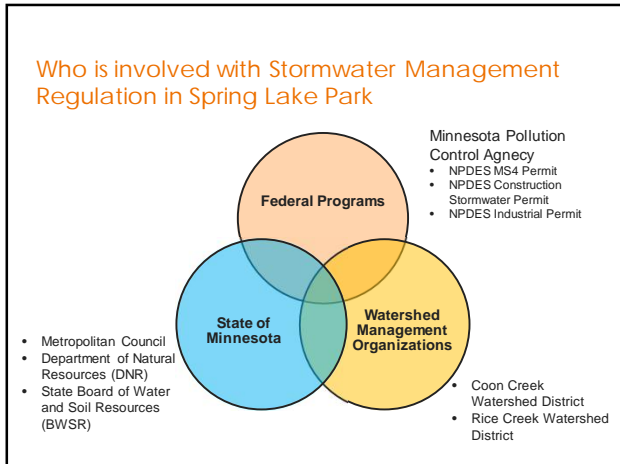
1

What is an MS4?

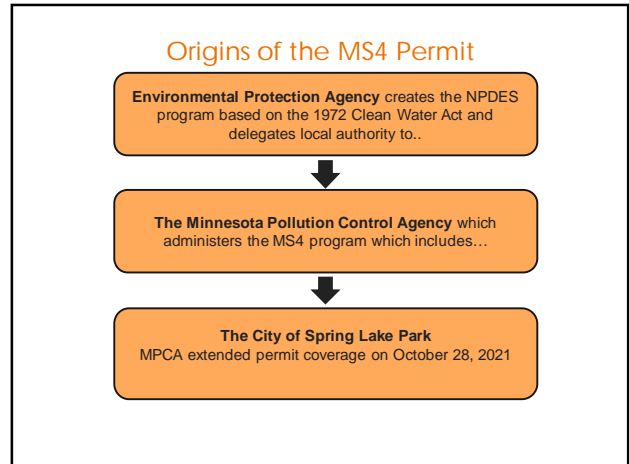
Municipal Separate Storm Sewer System (MS4)

- Owned by a State, City, Village, or Other Public Entity that discharges to Waters of the U.S.
- Designed or used to collect or convey stormwater
- Not a combined sewer system
- Not part of a Publicly Owned Treatment Works (sewage treatment plant)

2



3



4

- ### Basic Components of the MS4 Permit
- 6 Minimum Control Measures**
- Public Education and Outreach
 - Public Participation and Involvement
 - Illicit Discharge Detection and Elimination
 - Construction Site Stormwater Runoff Control
 - Post-Construction Stormwater Management
 - Pollution Prevention/Good Housekeeping

5



6

How Does Spring Lake Park Comply with the MS4 Permit

- Partnerships with Watersheds
- City Ordinance and LWMP Requirements
- Implement Enforcement Response Procedures
- Storm Sewer System Map
- Stormwater Related Brochures and Articles
- MS4 Permit Annual Public Meeting
- Inspections (Illicit discharge, Construction, and MS4 System)
- Provide a Plan Review Checklist
- Street Sweeping
- Staff Training
- Facilities Inventory Assessment
- Pond Assessment
- MS4 Annual Reports (2022 and 2023 reports will be submitted next year)
- Participate in Audits (MPCA cancelled audit in spring 2023 due to staffing shortages)

7

Permit Updates

- New General Permit was issued November 16, 2020
- City submitted application April 14, 2021
- City submitted updated application May 26, 2021
- Permit coverage extended on October 28, 2021
- Incorporated new requirements by October 28,2022



8

Questions?



PLEASE DON'T POLLUTE

DRAINS TO MISSISSIPPI RIVER

9