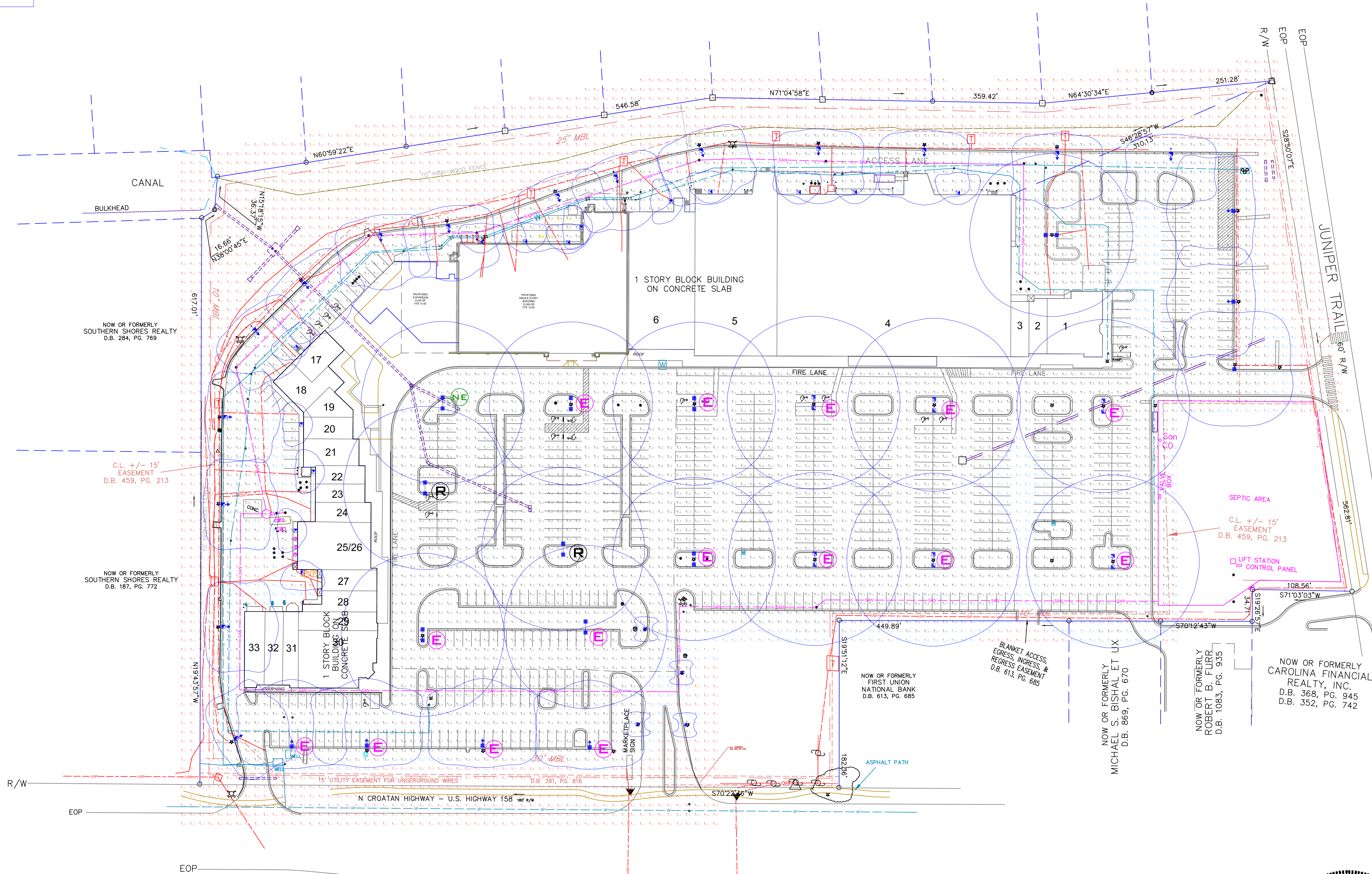


REVISIONS

REV #	DATE	BY:



- (E) EXISTING POLE AND FIXTURES
- (R) RELOCATED POLE AND FIXTURES
- (NE) NEW POLE AND EXISTING FIXTURES

BASED ON THE INFORMATION PROVIDED, ALL DIMENSIONS AND LUMINAIRE LOCATIONS SHOWN REPRESENT RECOMMENDED POSITIONS. THE ENGINEER AND/OR ARCHITECT MUST DETERMINE APPLICABILITY OF THE LAYOUT TO EXISTING OR FUTURE FIELD CONDITIONS.

THIS LIGHTING PATTERN REPRESENTS ILLUMINATION LEVELS CALCULATED FROM LABORATORY DATA TAKEN UNDER CONTROLLED CONDITIONS UTILIZING CURRENT INDUSTRY STANDARD LAMP RATINGS IN ACCORDANCE WITH ILLUMINATING ENGINEERING SOCIETY APPROVED METHODS. ACTUAL PERFORMANCE OF ANY MANUFACTURER'S LUMINAIRE MAY VARY DUE TO VARIATION IN ELECTRICAL VOLTAGE, TOLERANCE IN LAMPS AND OTHER VARIABLE FIELD CONDITIONS.

OPTION 2


Label	Units	Avg	Max	Min	Avg/Min	Max/Min	PtSpCt	PtSpTb
FOOD LION PARKING SUMMARY	Fc	4.31	7.4	1.5	2.87	4.93	10	10
JUNIPER TRAIL ENTRANCE	Fc	2.40	3.5	1.0	2.40	3.50	10	10
MAIN ENTRANCES	Fc	1.88	5.5	0.1	18.80	55.00	10	10
MAIN PARKING	Fc	3.94	6.9	1.2	3.28	5.75	10	10
REAR AND SIDE	Fc	3.25	8.3	0.6	5.42	13.83	10	10

Symbol	Qty	Label	Lumens	LLF	Description	Lum. Watts
	4	X5	5200	0.600	LSI-ENS-SA-H-5-70-CMI-F 14' MOUNTING HEIGHT	82
	9	A	N.A.	0.980	WLS-OSQ-HO-A-SSH-40L-57K 33' MOUNTING HEIGHT	341
	1	B	N.A.	0.980	WLS-OSQ-HO-A-SSH-40L-57K 33' MOUNTING HEIGHT	341
	6	C	N.A.	0.980	WLS-OSQ-HO-A-4ME-40L-57K-BLSF 33' MOUNTING HEIGHT	341
	15	D	N.A.	0.980	WLS-OSQ-A-4ME-U-57K-BLS 28' MOUNTING HEIGHT	215
	14	E	N.A.	0.980	WLS-XSPW-A-3MC-U-57K ASST MOUNTING HEIGHT	42
	6	R	N.A.	0.980	WLS-OSQ-HO-A-SSH-50L-57K 33' MOUNTING HEIGHT	420


M Consultants, PLLC
 750 Brookside Blvd.
 Westerville, Ohio 43081
 phone: 614.839.4639
 fax: 614.839.2222
 North Carolina Firm # P-1046


 NORTH CAROLINA
 PROFESSIONAL ENGINEER
 M. P. HUFFMASTER
 No. 037711

THE MARKETPLACE AT SOUTHERN SHORES, NC


WLS LIGHTING SYSTEMS
 Consider the Impact!

1919 WINDSOR PLACE
 FORT WORTH, TX 76110
 WWW.WLSLIGHTING.COM

WLS-16569B

DATE - 6/10/21

SCALE: 1"=60'

800-633-8711

PM: ROBBY

BY: TO

SHEET 1 OF 1