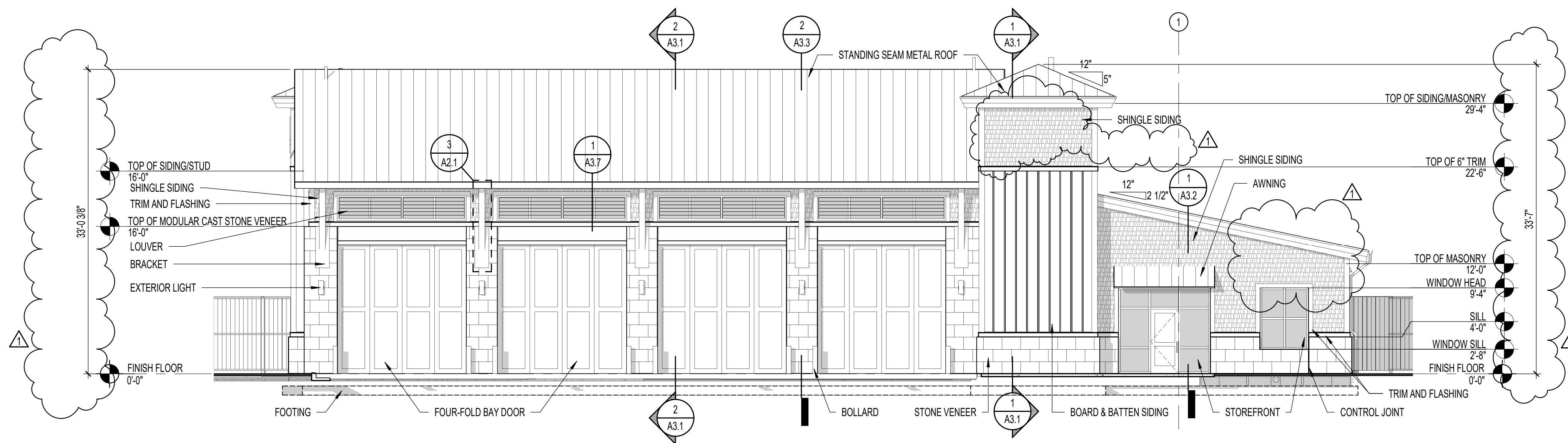
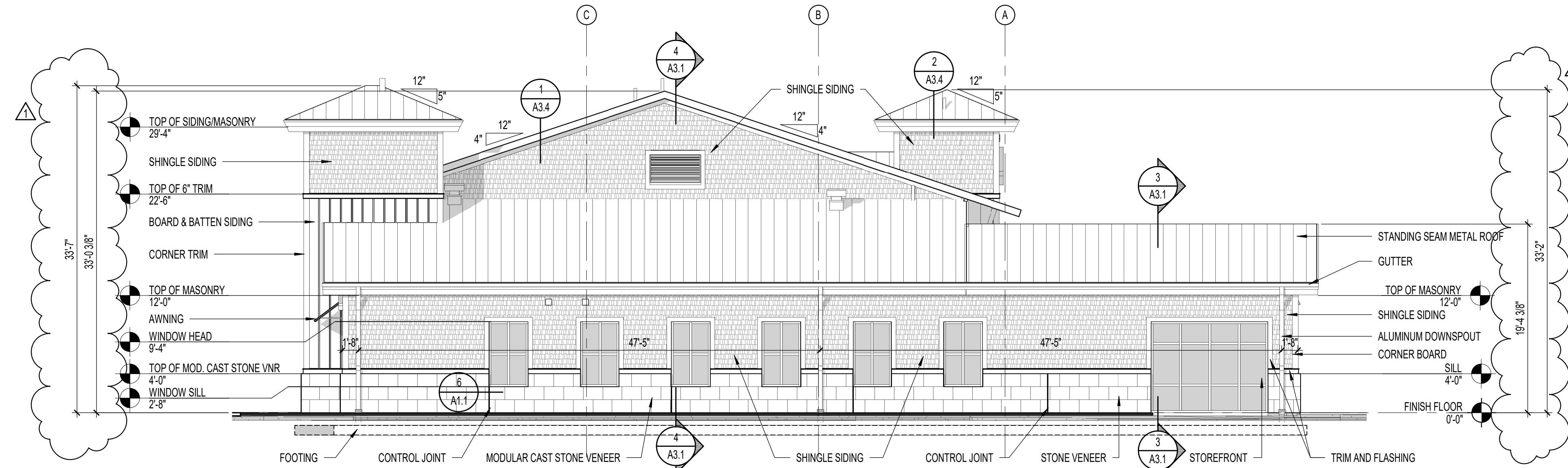


Copyright © 2022 Oakley Collier Architects. These drawings are the property of the Architect for use under his supervision. No reproduction or other use is allowed without permission.

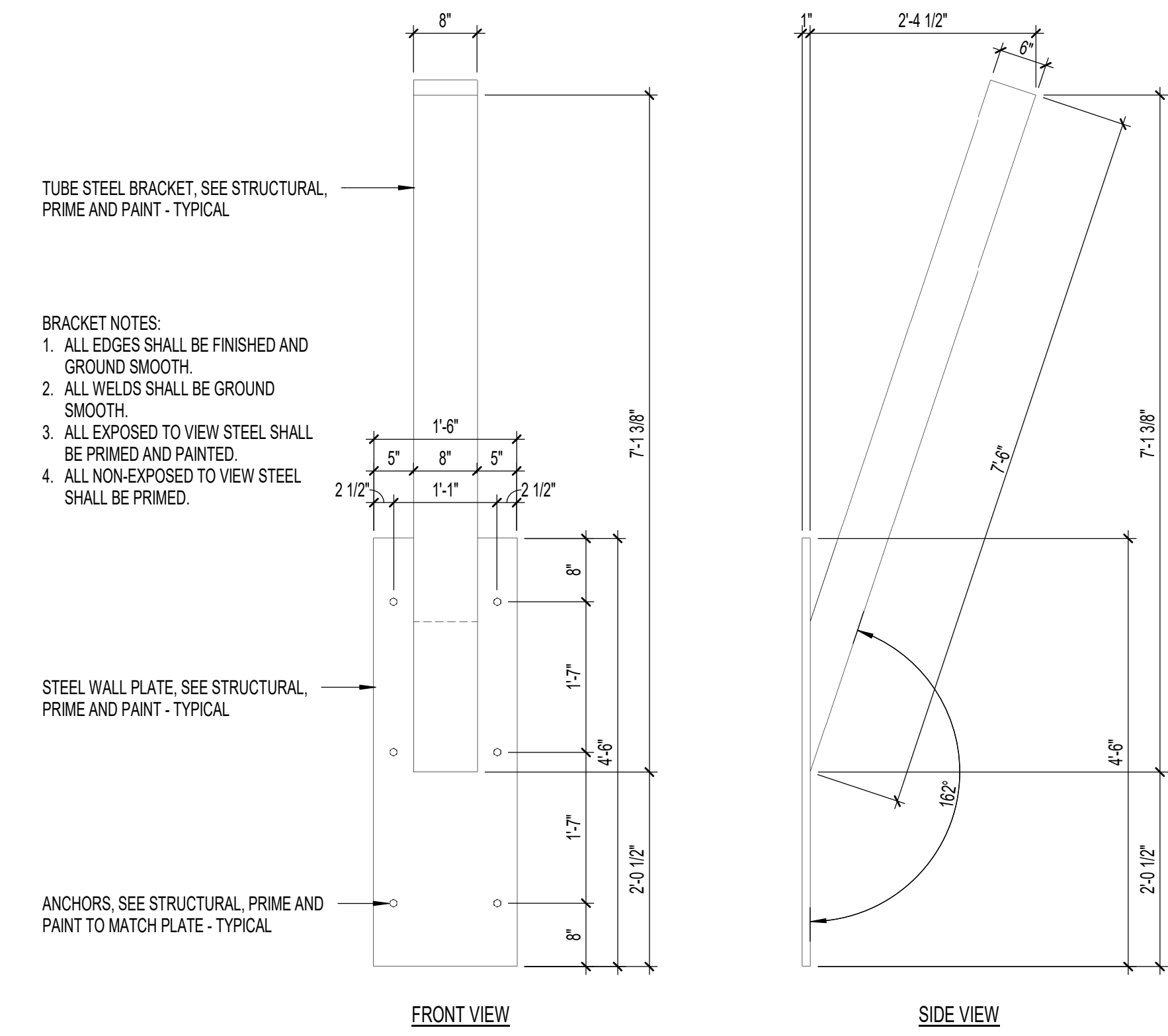


**1 FRONT ELEVATION**  
A2.1 1/8" = 1'-0"

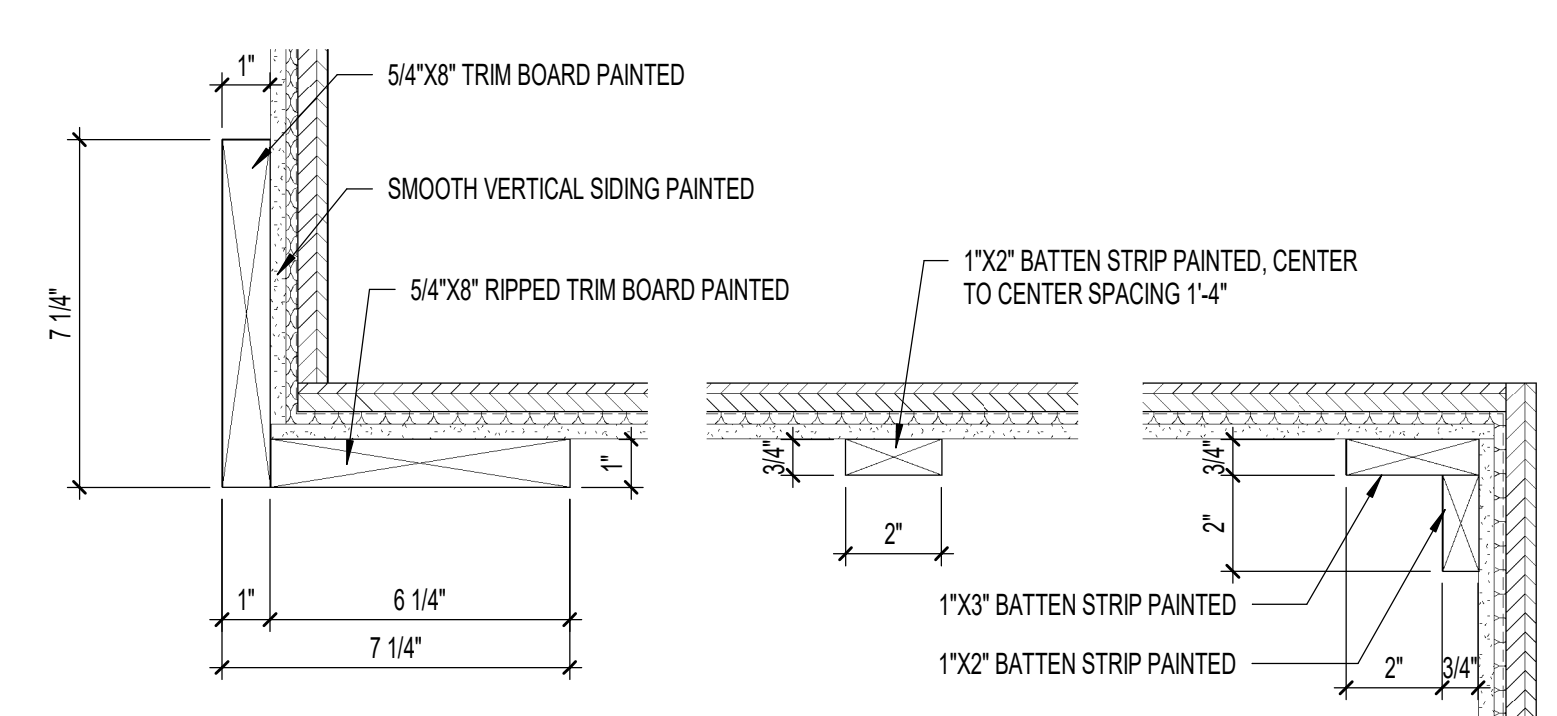


**2 RIGHT SIDE ELEVATION**  
A2.1 1/8" = 1'-0"

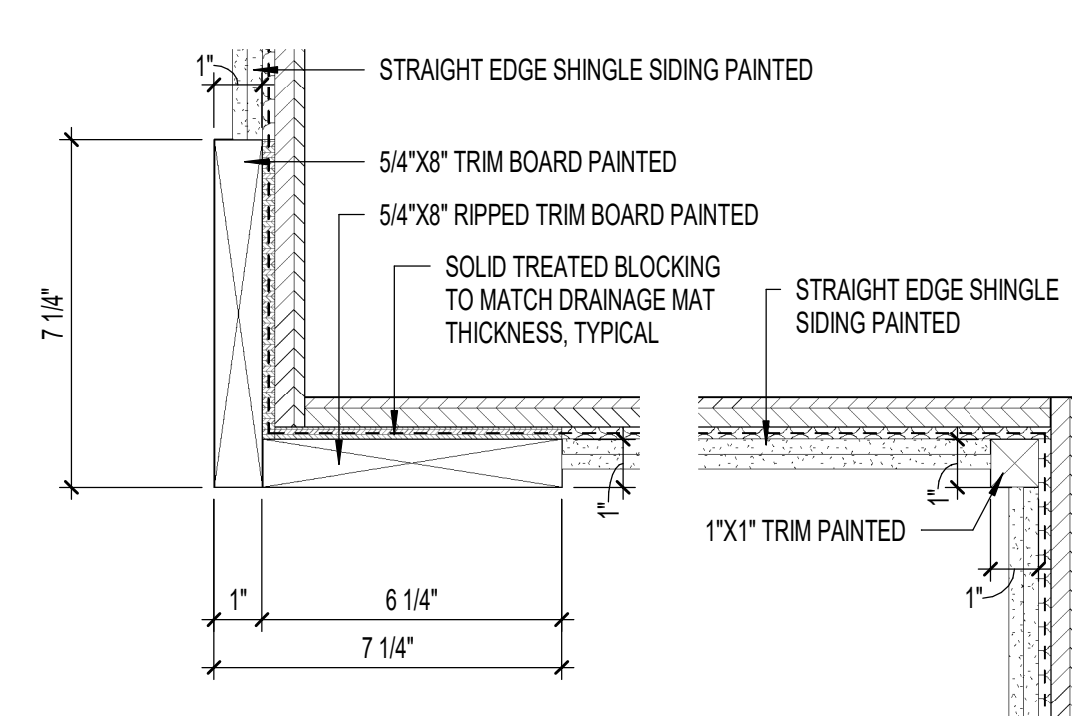
EXTERIOR FINISH LEGEND		NOTES: 1. MANUFACTURER'S INDICATED ARE BASIS OF DESIGN; SEE SPECIFICATION SECTION 01 60 00 - PRODUCT REQUIREMENTS FOR SUBSTITUTION REQUESTS. 2. ALL EXTERIOR SIDING AND TRIM SHALL BE FACTORY PRIMED AND FIELD PAINTED UNLESS NOTED OTHERWISE. 3. ALL FACTORY FINISHED TRIM SHALL BE TOUCHED UP IN FIELD AS NECESSARY FOR AND AFTER INSTALLATION. 4. TRIM INCLUDES ALL HORIZONTAL AND VERTICAL PIECES, INCLUDING FASCIAS, FRIEZES, AND BATTENS. 5. SEE DETAILS AND WALL SECTIONS FOR SIZES OF TRIM. 6. INSTALL AND FINISH ALL COMPONENTS PER MANUFACTURER'S RECOMMENDATIONS.
MATERIAL	DESCRIPTION	
VERTICAL SIDING	HARDIPANEL VERTICAL SIDING - SMOOTH MANUFACTURER: JAMES HARDIE COLOR: FIELD PAINT COLOR AS SELECTED BY ARCHITECT	
SHINGLE SIDING	HARDIESHINGLE SIDING - STRAIGHT EDGE MANUFACTURER: JAMES HARDIE COLOR: FIELD PAINT COLOR AS SELECTED BY ARCHITECT	
TRIM	HARDITRIM BOARDS - SMOOTH MANUFACTURER: JAMES HARDIE COLOR: FIELD PAINT COLOR AS SELECTED BY ARCHITECT	
SOFFIT	HARDIESOFFIT PANELS - NON-VENTED SMOOTH MANUFACTURER: JAMES HARDIE COLOR: FIELD PAINT COLOR AS SELECTED BY ARCHITECT	
VEENER	PRESTIGE CAST - SMOOTH MANUFACTURER: JOHNSON CONCRETE PRODUCTS COLOR: TALC JCL-C103 OR DOLOMITE JCL-C111 AS SELECTED BY ARCHITECT - ONLY ONE COLOR TO BE SELECTED	



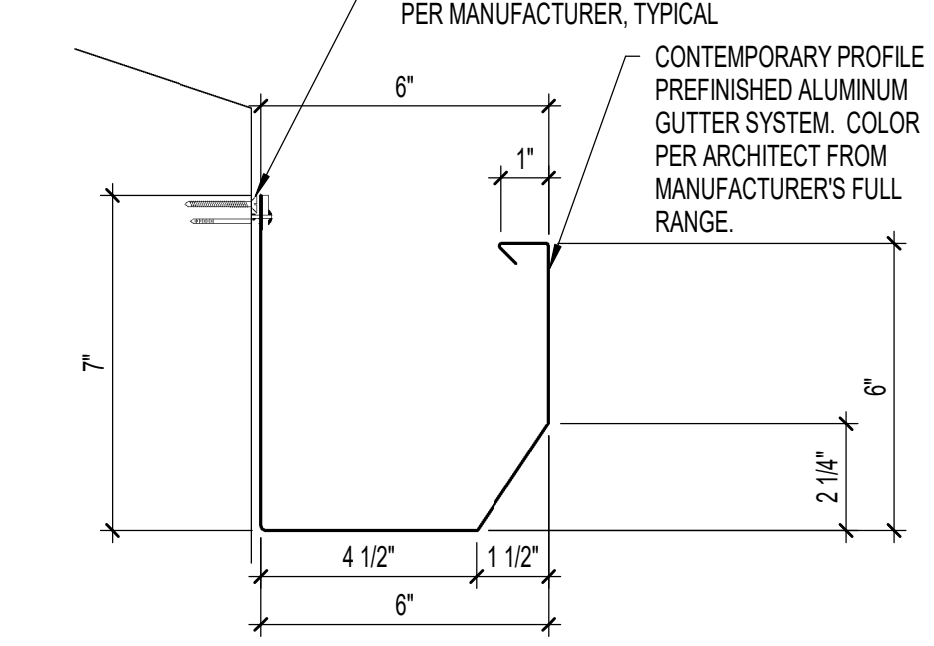
**3 DETAIL**  
A2.1 3/4" = 1'-0"



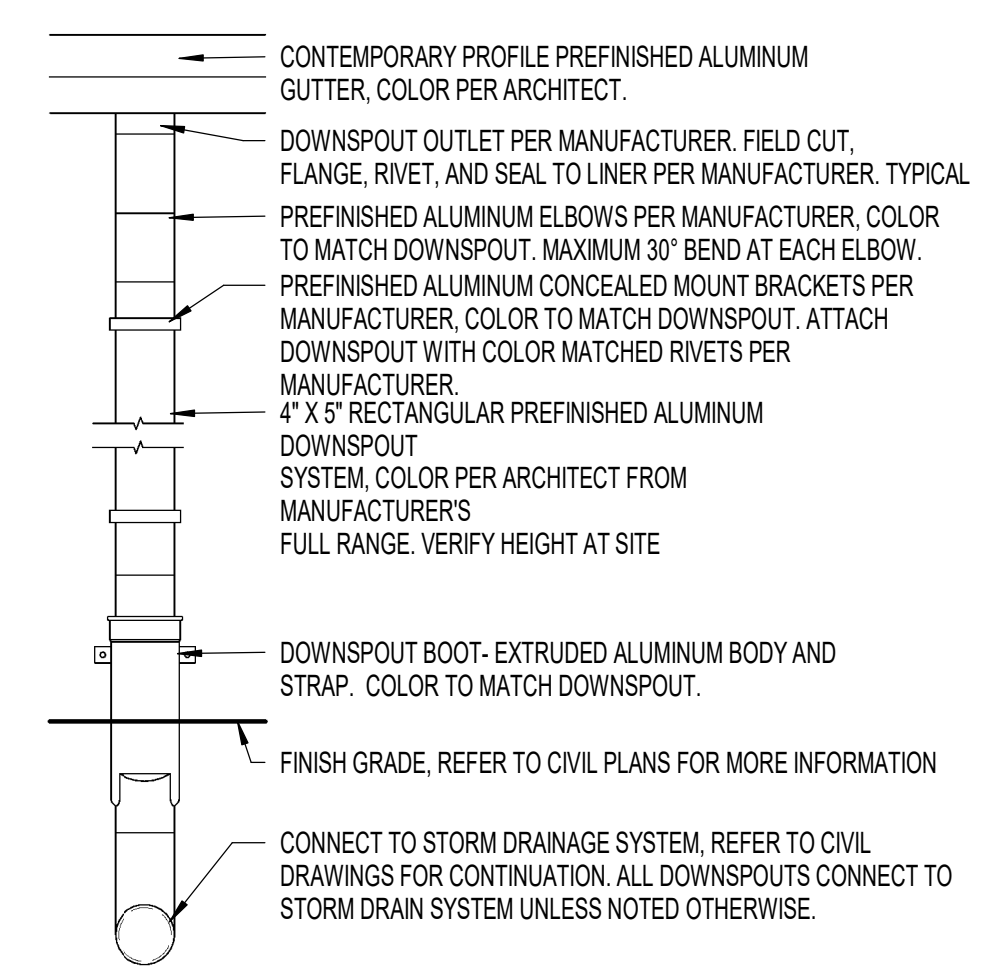
**4 DETAIL**  
A2.1 3" = 1'-0"



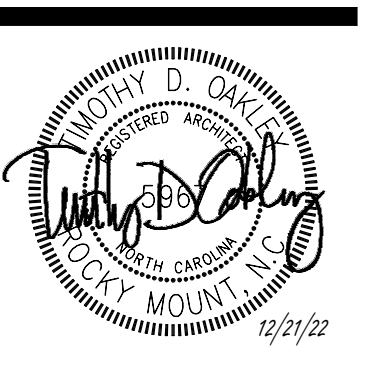
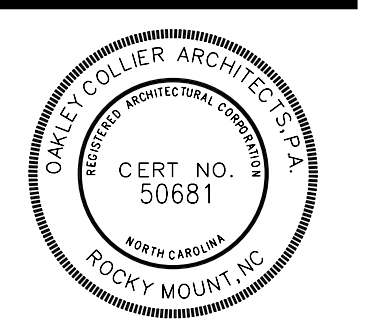
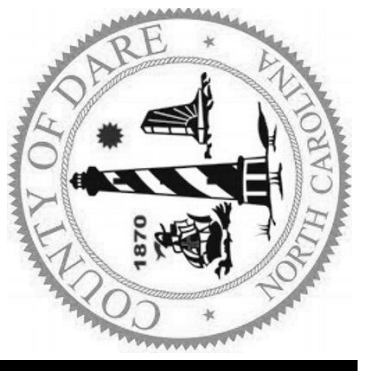
**5 DETAIL**  
A2.1 3" = 1'-0"



**7 GUTTER DETAIL**  
A2.1 3" = 1'-0"



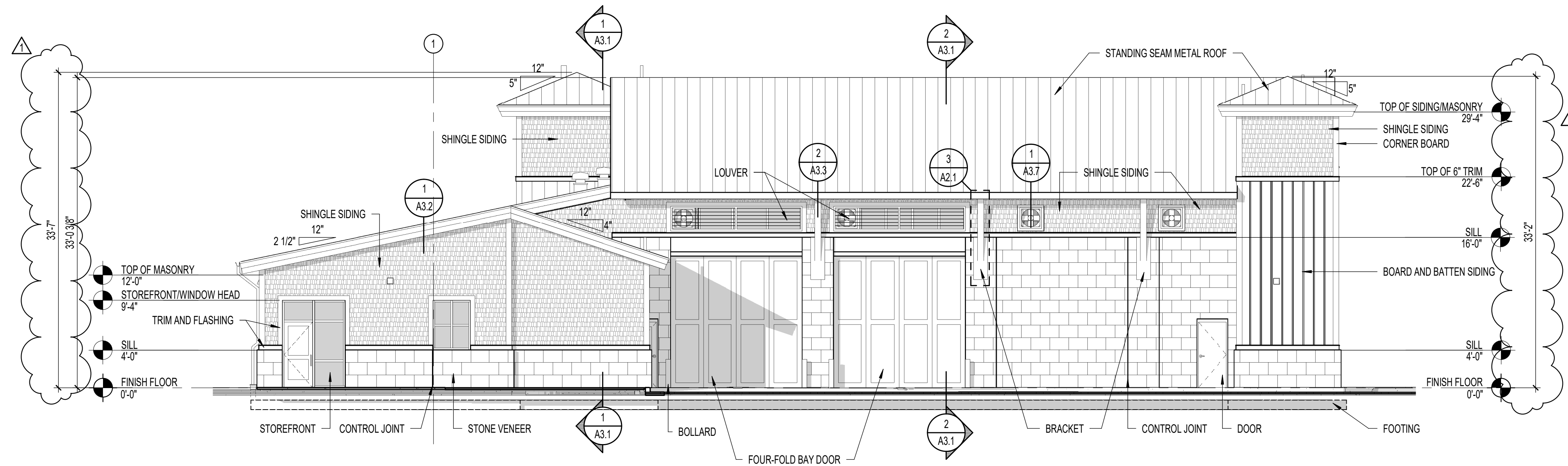
**6 DOWNSPOUT**  
A2.1 3/4" = 1'-0"



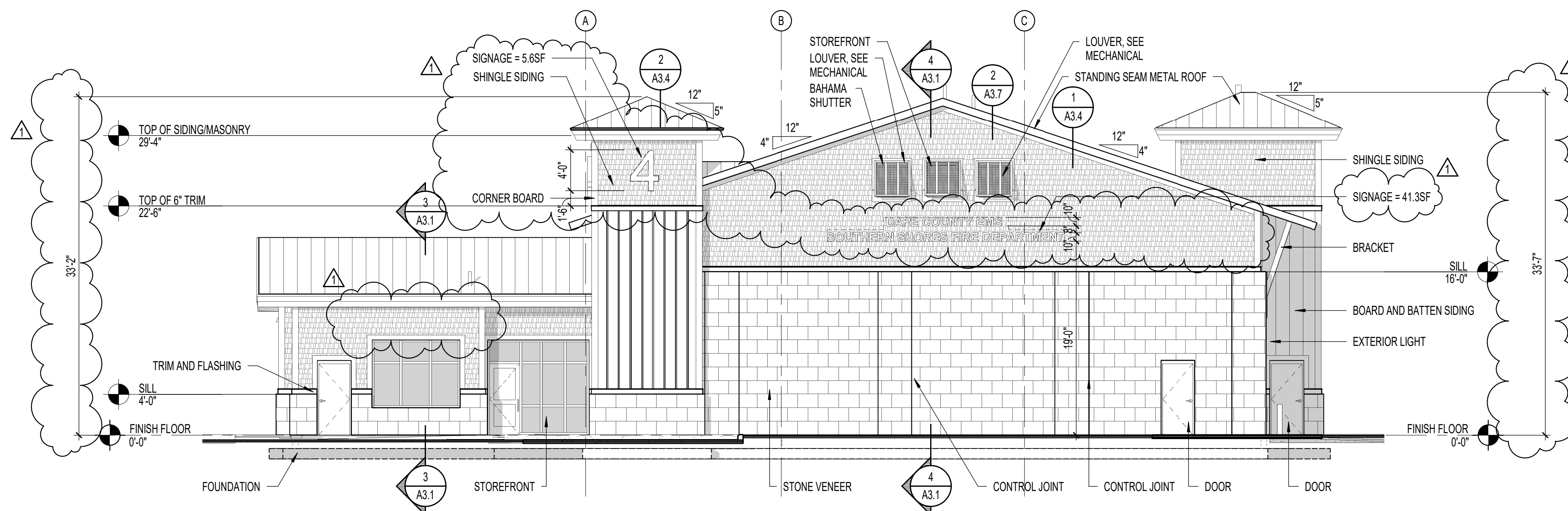
**GENERAL NOTE:**  
Prior to construction start, Contractor shall verify & be responsible for all Dimensions.

Revisions  
12/21/22 - TOWN REVIEW

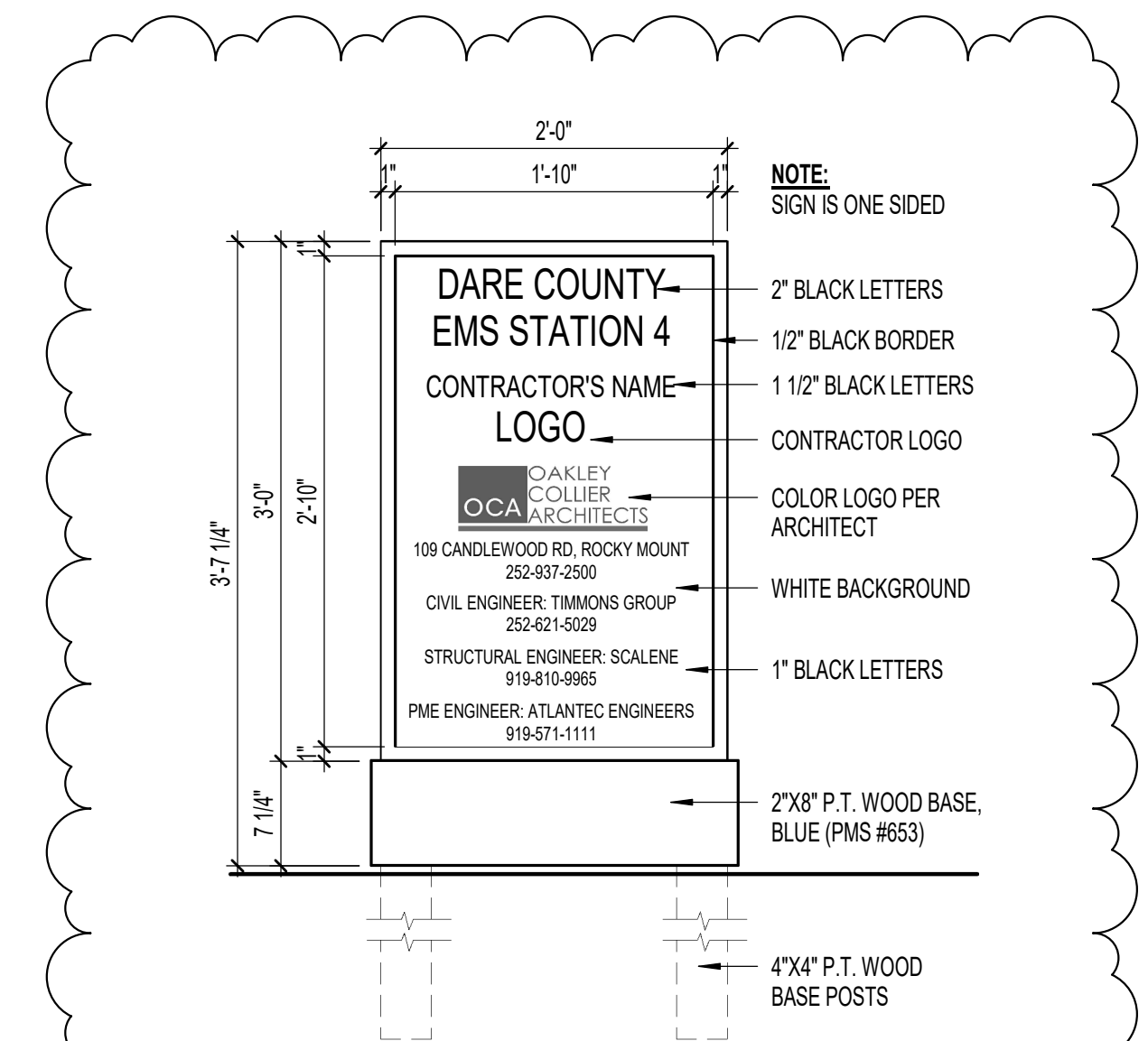
Date	Project No.
12-21-22	<b>21032</b>
Drawn By	Sheet No.
JH	<b>A2.1</b>
Checked By	
TDO	
Sheet Title	
EXTERIOR ELEVATIONS	



1 REAR ELEVATION  
1/8" = 1'-0"

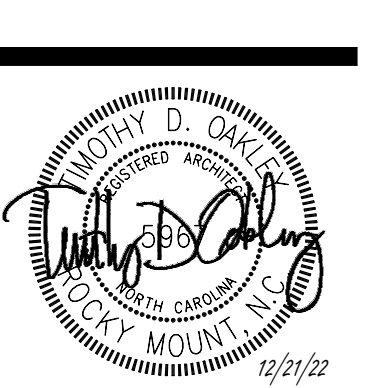
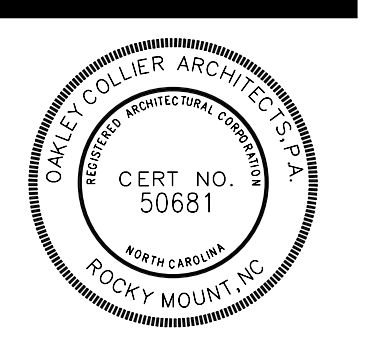


2 LEFT SIDE ELEVATION  
1/8" = 1'-0"



3 JOB SIGN  
1" = 1'-0"

EXTERIOR SIGNAGE AREA LEGEND			
FACING STREET	ELEVATION	CONTENT	AREA (SF)
NC-12 (DUCK RD)	LEFT SIDE	DARE COUNTY EMS	41.3 SF
		SOUTHERN SHORES FIRE DEPARTMENT	5.6 SF
	TOTAL		46.9 SF



GENERAL NOTE:  
Prior to construction start, Contractor shall verify & be responsible for all Dimensions.

Revisions  
12/7/22 - TOWN REVIEW

Date	Project No.
12-21-22	21032
Drawn By	Sheet No.
JH	A2.2
Checked By	
TDO	
Sheet Title	
EXTERIOR ELEVATIONS	