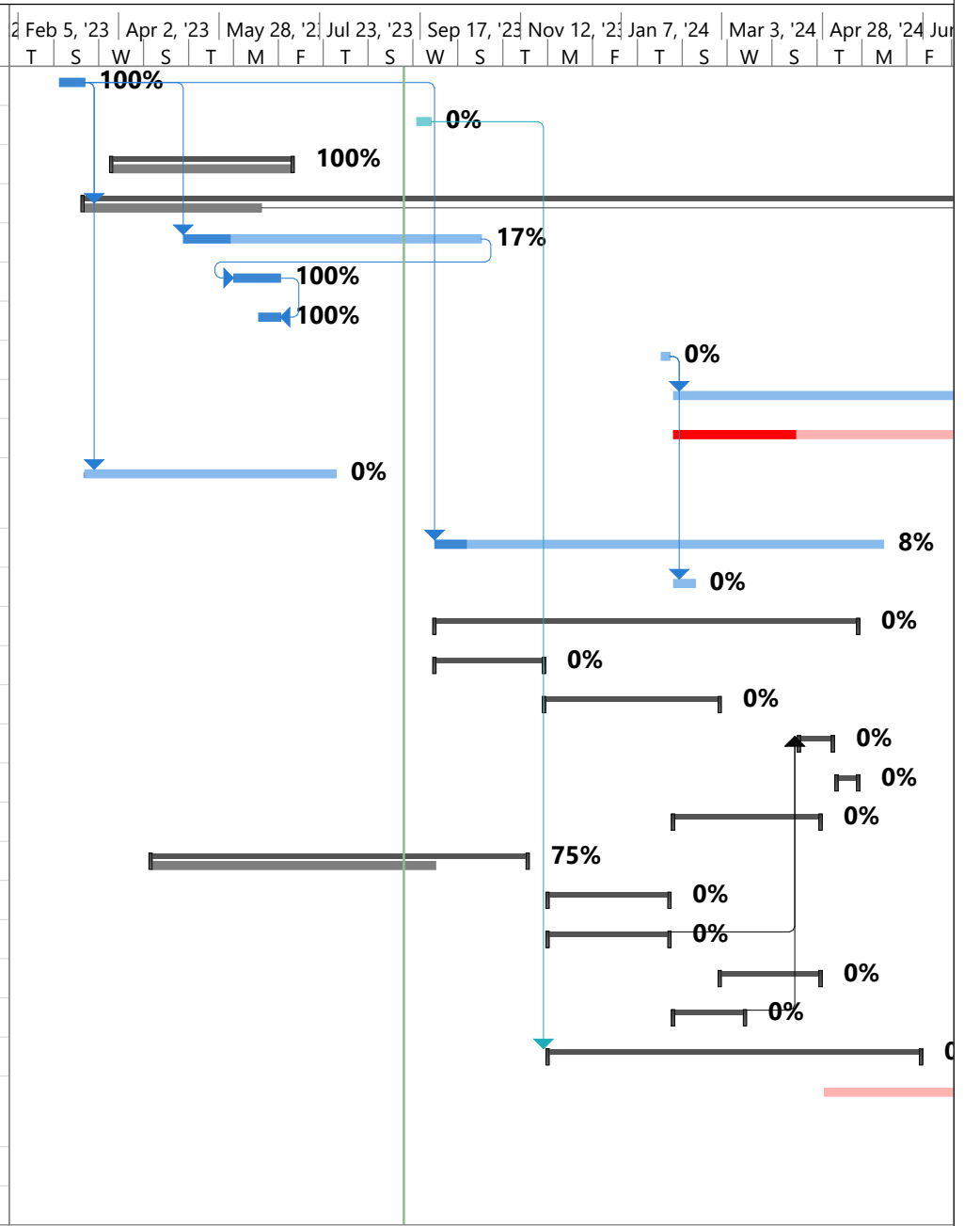


2023-09-06_Trinitie Trail - MS Project Schedule.mpp

| ID | Task Mode | Task Name | Duration | Start | Finish | Predecessors | Resource Names | 2 Feb 5, '23 | Apr 2, '23 | May 28, '23 | Jul 23, '23 | Sep 17, '23 | Nov 12, '23 | Jan 7, '24 | Mar 3, '24 | Apr 28, '24 | Jun | | | | |
|----|-----------|--|----------|--------------|--------------|--------------|----------------|--------------|------------|-------------|-------------|-------------|-------------|------------|------------|-------------|-----|---|---|---|---|
| | | | | | | | | T | S | W | S | T | M | F | T | S | W | S | T | M | F |
| 1 | ✓ | Initial Scoping and NTP (TO#1) | 10 days | Tue 2/28/23 | Mon 3/13/23 | | | | | | | | | | | | | | | | |
| 2 | 🚀 | NTP TO#2 | 6 days | Fri 9/15/23 | Fri 9/22/23 | | | | | | | | | | | | | | | | |
| 3 | ✓ | Survey | 73 days | Wed 3/29/23 | Fri 7/7/23 | | | | | | | | | | | | | | | | |
| 8 | 🚀 | PDEA - NES | 385 days | Mon 3/13/23 | Fri 8/30/24 | 1 | | | | | | | | | | | | | | | |
| 9 | 📅 | Stream, Wetland, & Coastal Resource Delineation | 6 mons | Mon 5/8/23 | Fri 10/20/23 | 1 | | | | | | | | | | | | | | | |
| 10 | ✓ | USACE, NCDWR, & NCDWM Agency Verifications | 4 wks | Mon 6/5/23 | Fri 6/30/23 | 9 | | | | | | | | | | | | | | | |
| 11 | ✓ | Preliminary Environmental Assessment | 2 wks | Mon 6/19/23 | Fri 6/30/23 | 10FF | | | | | | | | | | | | | | | |
| 12 | 🚀 | Submit 404/401 Permits | 1 wk | Mon 1/29/24 | Fri 2/2/24 | 48FF | | | | | | | | | | | | | | | |
| 13 | 📅 | Approved and Signed 404/401 Permits | 120 days | Mon 2/5/24 | Fri 7/19/24 | 12 | | | | | | | | | | | | | | | |
| 14 | 🚀 | CAMA Major Permit | 150 days | Mon 2/5/24 | Fri 8/30/24 | 25 | | | | | | | | | | | | | | | |
| 15 | 📅 | USCG Advance Approval Permit Exemption & Bridge Lighting Exemption | 20 wks | Mon 3/13/23 | Mon 7/31/23 | 1 | | | | | | | | | | | | | | | |
| 16 | 🚀 | Permitting Coordination with Agencies | 9 mons | Mon 9/25/23 | Fri 5/31/24 | 1 | | | | | | | | | | | | | | | |
| 17 | 🚀 | Permit Drawings | 2 wks | Mon 2/5/24 | Fri 2/16/24 | 12 | | | | | | | | | | | | | | | |
| 18 | 🚀 | Roadway Design | 170 days | Mon 9/25/23 | Fri 5/17/24 | | | | | | | | | | | | | | | | |
| 19 | 🚀 | 25% Plans | 45 days | Mon 9/25/23 | Fri 11/24/23 | | | | | | | | | | | | | | | | |
| 26 | 🚀 | 65% Plans | 70 days | Fri 11/24/23 | Fri 3/1/24 | | | | | | | | | | | | | | | | |
| 32 | 🚀 | 90 % Plans | 15 days | Mon 4/15/24 | Fri 5/3/24 | 49,55 | | | | | | | | | | | | | | | |
| 35 | 🚀 | 100 % Plans | 10 days | Mon 5/6/24 | Fri 5/17/24 | | | | | | | | | | | | | | | | |
| 37 | 🚀 | Structure Design | 60 days | Mon 2/5/24 | Fri 4/26/24 | | | | | | | | | | | | | | | | |
| 42 | 🚀 | Geotechnical Investigations | 150 days | Thu 4/20/23 | Wed 11/15/23 | | | | | | | | | | | | | | | | |
| 44 | 🚀 | Hydraulic Design | 50 days | Mon 11/27/23 | Fri 2/2/24 | | | | | | | | | | | | | | | | |
| 49 | 🚀 | Erosion Control Design | 50 days | Mon 11/27/23 | Fri 2/2/24 | | | | | | | | | | | | | | | | |
| 52 | 🚀 | R/W Acquisition | 40 days | Fri 3/1/24 | Fri 4/26/24 | | | | | | | | | | | | | | | | |
| 55 | 🚀 | Work Zone Traffic Control (WZTC) | 30 days | Mon 2/5/24 | Fri 3/15/24 | | | | | | | | | | | | | | | | |
| 57 | 🚀 | Utility Coordination and Relocations | 150 days | Mon 11/27/23 | Fri 6/21/24 | 2 | | | | | | | | | | | | | | | |
| 62 | 🚀 | Advance Approval - Bridge Maintenance Project Plan | 90 days | Mon 4/29/24 | Fri 8/30/24 | 64FF | | | | | | | | | | | | | | | |
| 63 | 📅 | Advertise | 4 wks | Mon 8/5/24 | Fri 8/30/24 | 64FF | | | | | | | | | | | | | | | |
| 64 | 🚀 | Letting | 0 days | Fri 8/30/24 | Fri 8/30/24 | 60,54,61,8 | | | | | | | | | | | | | | | |



| | | | | | | | | | | | |
|-------------------|--|---------------|--|----------------|--|--------------------|--|--------------------|--|--------------------|--|
| Critical | | Split | | Finish-only | | Baseline Milestone | | Manual Summary | | Inactive Task | |
| Critical Split | | Task Progress | | Duration-only | | Milestone | | Project Summary | | Inactive Milestone | |
| Critical Progress | | Manual Task | | Baseline | | Summary Progress | | External Tasks | | Inactive Summary | |
| Task | | Start-only | | Baseline Split | | Summary | | External Milestone | | Deadline | |