

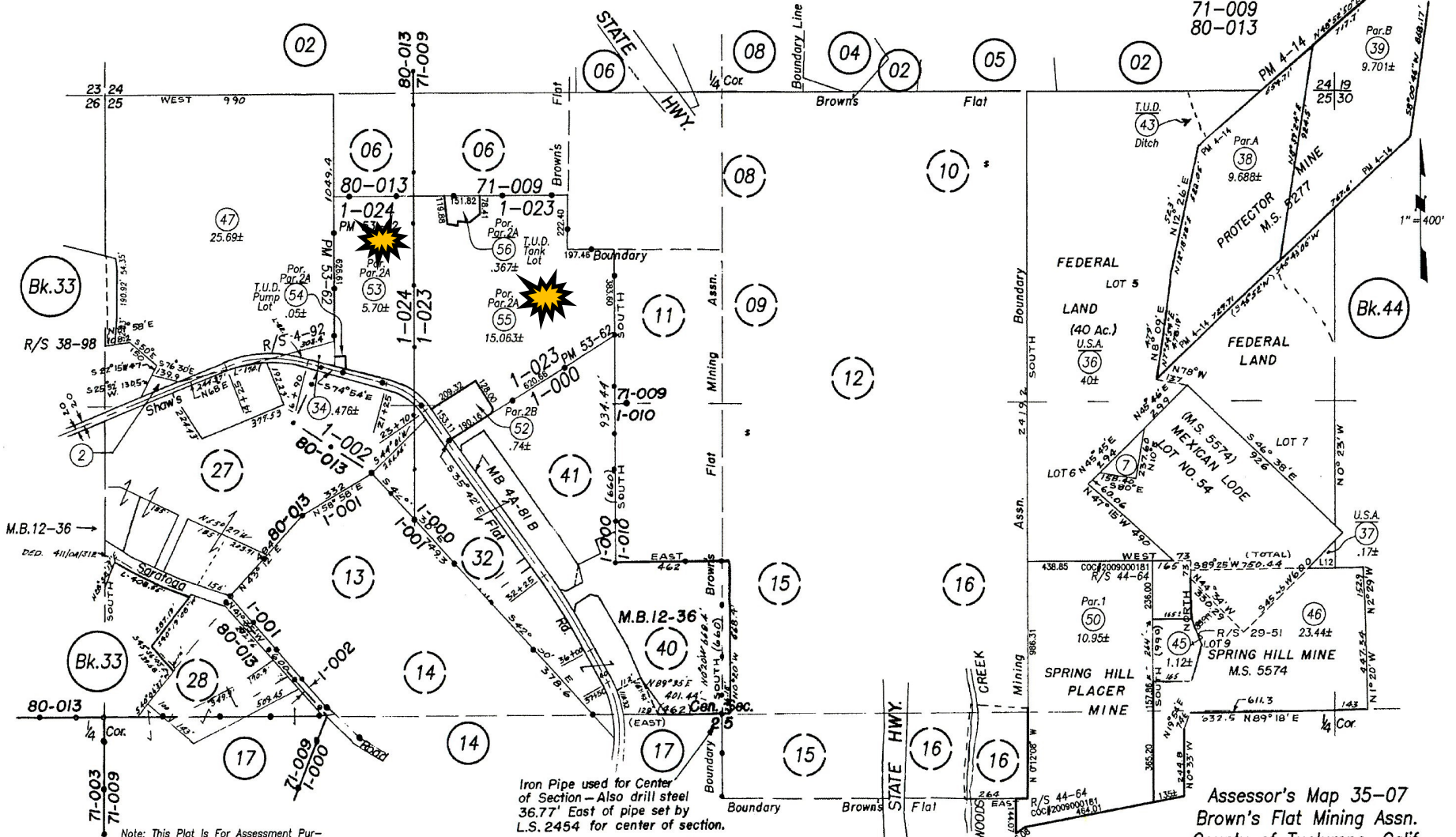
56

REVISION DATE  
6/21/2017

POR. N 1/2 SEC.25 T.2 N., R.14 E., M.D.B.&M.

Tax Rate Area  
1-000  
1-001  
1-023  
1-024  
71-009  
80-013

35-07



Note: This Plat Is For Assessment Purposes Only And Not An Official Map.  
Copyright ©1998 by Tuol. Co. Assessor

Iron Pipe used for Center of Section - Also drill steel 36.77' East of pipe set by L.S. 2454 for center of section.

Assessor's Map 35-07  
Brown's Flat Mining Assn.  
County of Tuolumne, Calif.  
1949