

REN CHIBROW BENEFITARIAN IMPROVEMENT PROJECT



ABBREVIATIONS

AB	AGGREGATE BASE
AC	ASPHALT CONCRETE
AV	AIR VAC
BC	BEGIN CURVE
BCR	BEGIN CURB RETURN
BEG.	BEGIN
BO	BLOWOFF
BVC	BEGIN VERTICAL CURVE
BW	BACK OF WALK
BX	BOTTOM OF X
C&G	CURB AND GUTTER
CAB	CRUSHED AGGREGATE BASE
CB	CATCH BASIN
Q/CL	CENTERLINE
CF	CURB FACE
CIR	COLD IN-PLACE RECYCLE
CLF	CHAIN LINK FENCE
CLR	CLEAR
CONC	CONCRETE
CONST.	CONSTRUCTION
CPC	CALIFORNIA PLUMBING CODE
DI	DUCTILE IRON
DWY	DRIVEWAY
DWG	DRAWING
E	EAST
EC	END CURVE
ECR	END CURB RETURN
EG	EDGE OF GUTTER
ELEV	ELEVATION
EOP/EP	EDGE OF PAVEMENT
EVC	END VERTICAL CURVE
EX./EXIST.	EXISTING
FDR	FULL DEPTH RECLAMATION
FG	FINISHED GRADE
FH	FIRE HYDRANT
FL	FLOWLINE
FS	FINISHED SURFACE
GI	GALVANIZED IRON
GL	GUTTER LIP
GB	GRADE BREAK
HDPE	HIGH DENSITY POLYETHYLENE
HMA	HOT MIX ASPHALT
HTF	HIGH TENSILE FIBER
INT.	INTERSECTION
INV.	INVERT
L	LENGTH
LF	LINEAR FEET
LIP	LIP OF GUTTER
LT	LEFT
MAX	MAXIMUM
MH	MANHOLE
MIN	MINIMUM
N	NORTH
N.I.C.	NOT IN CONTRACT
N'LY	NORTHERLY
NO	NUMBER
NTS	NOT TO SCALE
O.C.	ON CENTER
OG	ORIGINAL GROUND
OH	OVERHEAD
PI	POINT OF INTERSECTION
PCC	PORTLAND CEMENT CONCRETE
PG&E	PACIFIC GAS AND ELECTRIC
PMB	PROCESSED MISCELLANEOUS BASE
P.O.C.	POINT OF CONNECTION
PP	POWER POLE
PRC	POINT OF REVERSE CURVE
PROP.	PROPOSED
PRVC	POINT OF REVERSE VERTICAL CURVE
PT.	POINT
PVC	POLYVINYL CHLORIDE
PVMT.	PAVEMENT
R	RATE, RADIUS
R.C.	RELATIVE COMPACTION
RCP	REINFORCED CONCRETE PIPE
REQ'D	REQUIRED
RSP	ROCK SLOPE PROTECTION
RT	RIGHT
R/W	RIGHT-OF-WAY
S	SLOPE
S'LY	SOUTHERLY
SCH	SCHEDULE
SDMH	STORM DRAIN MANHOLE
SDWK	SIDEWALK
ST	STREET
STA	STATION
STD	STANDARD
ST.GR.	STRAIGHT GRADE
TC	TOP OF CURB
TELE	TELEPHONE
TG	TOP OF GRATE
TOP	TOP OF PLATFORM
TR	TOP OF RAIL
TW	TOP OF WALL
TX	TOP OF X
TYP	TYPICAL
V	DEPTH
VAR	VARIES
VCP	VITRIFIED CLAY PIPE
W	WIDTH, WEST
WM	WATER METER

STORMDRAIN
CITY OF SONORA
(209)532-3508

WATER AND SEWER
TUOLUMNE UTILITIES DISTRICT
(209)532-5536

ELECTRIC
PACIFIC GAS AND ELECTRIC
(209)533-6033

TELEPHONE
AT&T
(209)588-8278

C:\ACAD\William\105259 Red Church, Sonora\900-PS&E\901-Plans\ 108259-PL-01-TITLE.dwg |Layout: PL-01 |gsr|10/27/2020 10:01 AM

CONSTRUCTION NOTES:

- PROTECT IN PLACE.
- REMOVE AS SHOWN.
- EXISTING CALTRANS ROW FLOWLINE OF CURB
- CONSTRUCT CURB AND GUTTER PER CALTRANS STD. PLAN A87A
- CONSTRUCT 4-INCH PCC SIDEWALK OVER COMPACTED NATIVE
- CONSTRUCT 6-INCH THICK COMMERCIAL DRIVEWAY PER CALTRANS STD. PLAN A87A
- CONSTRUCT CURB RAMP PER CALTRANS STD. PLAN A88A, CASE PER PLAN.
- CONSTRUCT 6-INCH AC PLUG OVER EXISTING
- CONSTRUCT BRICK BAND PER CITY DTL
- CONSTRUCT BRICK PLANTER PER CITY DLT
- ADJUST UTILITY TO GRADE

CONSTRUCTION NOTES:
SIGNING AND STRIPING

- INSTALL STRIPING DETAIL OR PAVEMENT MARKING AS INDICATED.
- REPAINT 12" WHITE CROSSWALK.

BENCHMARK

VERTICAL DATUM IS NAVD88 BASED ON NGS OPUS SOLUTION FOR THE PROJECT TAKEN FROM CONTROL POINT #100. ELEVATION=1,845.413' BASED UPON A FIELD SURVEY BY WILLDAN ENGINEERING ON 10-16-2018.

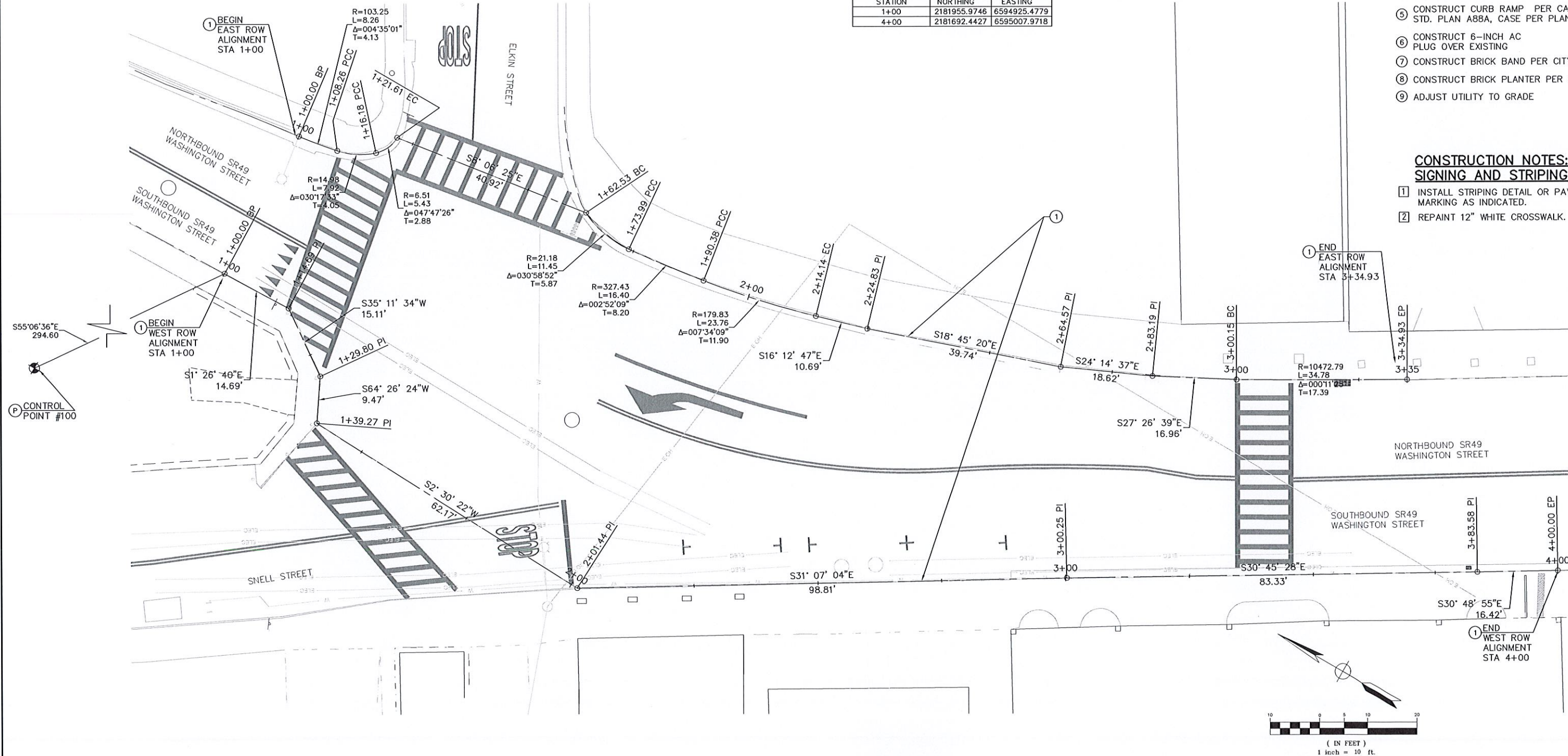
BASIS OF BEARING

HORIZONTAL DATUM IS NAD83 (2011) EPOCH 2010.0000. COORDINATES ARE CALIFORNIA STATE PLANE COORDINATE SYSTEM, ZONE 3 SCALED TO GROUND ABOUT CONTROL POINT #100. TO OBTAIN GRID DISTANCES SCALE COORDINATES 0.99993768 ABOUT CONTROL POINT #100.

CONTROL DATA		
POINT	NORTHING	EASTING
100	2182124.4870	6594683.8320

EAST ALIGNMENT DATA		
STATION	NORTHING	EASTING
1+00	2181956.7688	6594956.9762
3+34.93	2181738.3008	6595026.0467

WEST ALIGNMENT DATA		
STATION	NORTHING	EASTING
1+00	2181955.9746	6594925.4779
4+00	2181692.4427	6595007.9718



NO.	REVISION	BY	DATE



WILLDAN
Engineering

9281 Office Park Circle ~ Suite 100
Elk Grove, CA 95758 916.478.6002

DESIGNED:	
DRAWN:	
CHECKED:	



CITY OF SONORA
NORTH WASHINGTON STREET
SONORA, CALIFORNIA 95337



RED CHURCH PEDESTRIAN AND CIRCULATION
IMPROVEMENT PROJECT
EXISTING TOPOGRAPHY AND
RIGHT-OF-WAY

DATE: OCTOBER 27, 2020	SHEET: 2 OF 12
SCALE: AS NOTED	
PROJECT NO.: 108299	

CONSTRUCTION NOTES:

- (P) PROTECT IN PLACE.
- (RE) REMOVE AS SHOWN.
- ① EXISTING CALTRANS ROW FLOWLINE OF CURB
- ② CONSTRUCT CURB AND GUTTER PER CALTRANS STD. PLAN A87A
- ③ CONSTRUCT 4-INCH PCC SIDEWALK OVER COMPACTED NATIVE
- ④ CONSTRUCT 6-INCH THICK COMMERCIAL DRIVEWAY PER CALTRANS STD. PLAN A87A
- ⑤ CONSTRUCT CURB RAMP PER CALTRANS STD. PLAN A88A, CASE PER PLAN.
- ⑥ CONSTRUCT 6-INCH AC PLUG OVER EXISTING
- ⑦ CONSTRUCT BRICK BAND PER CITY DTL
- ⑧ CONSTRUCT BRICK PLANTER PER CITY DLT
- ⑨ ADJUST UTILITY TO GRADE

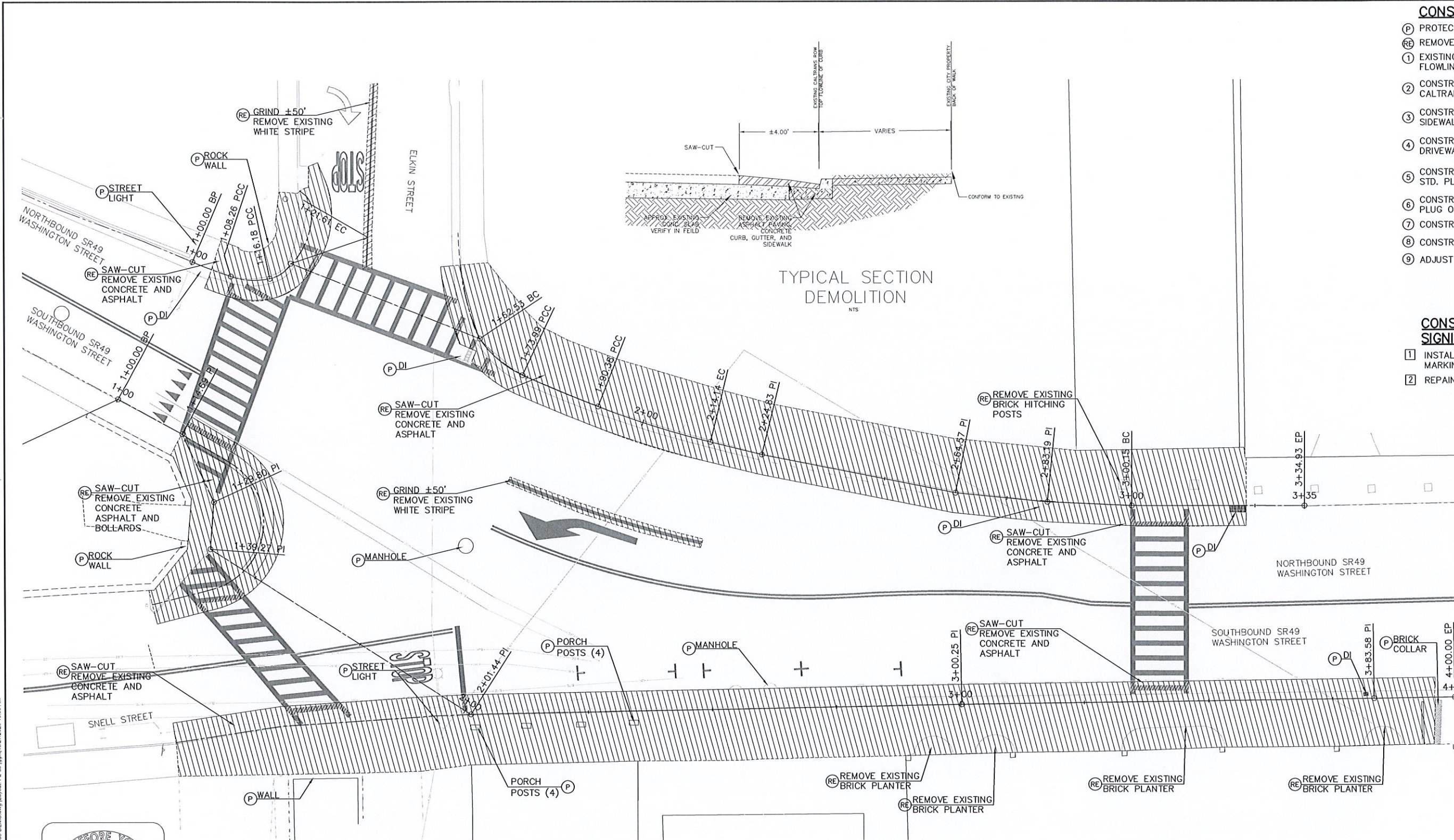
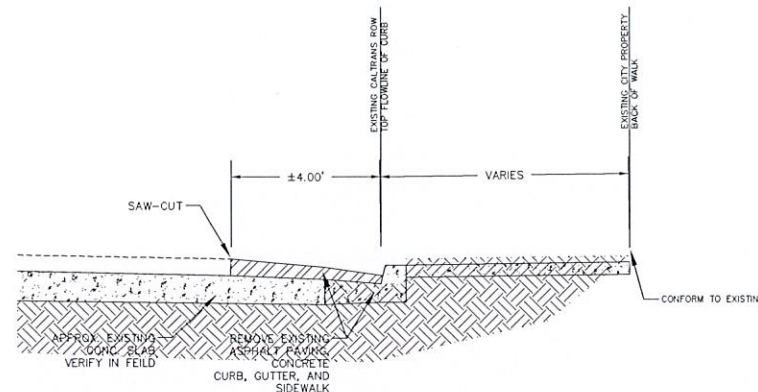
CONSTRUCTION NOTES:
SIGNING AND STRIPING

- ① INSTALL STRIPING DETAIL OR PAVEMENT MARKING AS INDICATED.
- ② REPAINT 12" WHITE CROSSWALK.

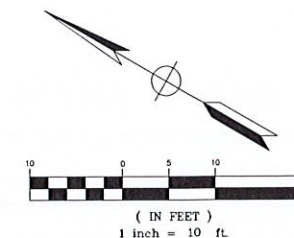
LEGEND

 REMOVE EXISTING ASPHALT AND CONCRETE

TYPICAL SECTION DEMOLITION



WARNING CAUTION
EXISTING UNDERGROUND UTILITIES
CONTACT: UNDERGROUND SERVICE
ALERT PHONE: (800) 642-2444
FOR MARKING PRIOR TO DIGGING



NO.	REVISION	BY	DATE

WILLDAN
Engineering
9281 Office Park Circle ~ Suite 100
Elk Grove, CA 95758 916.478.6002

DESIGNED:
DRAWN:
CHECKED:



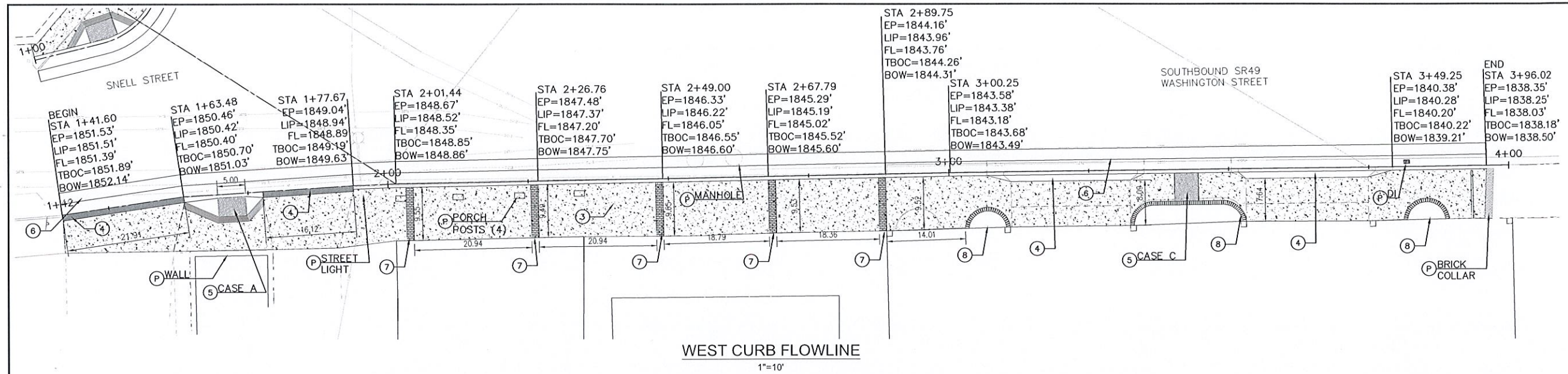
CITY OF SONORA
NORTH WASHINGTON STREET
SONORA, CALIFORNIA 95337



RED CHURCH PEDESTRIAN AND CIRCULATION
IMPROVEMENT PROJECT
DEMOLITION PLAN

DATE:
OCTOBER 27, 2020
SCALE:
AS NOTED
PROJECT NO.:
108299

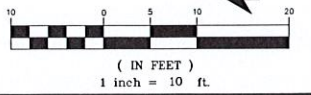
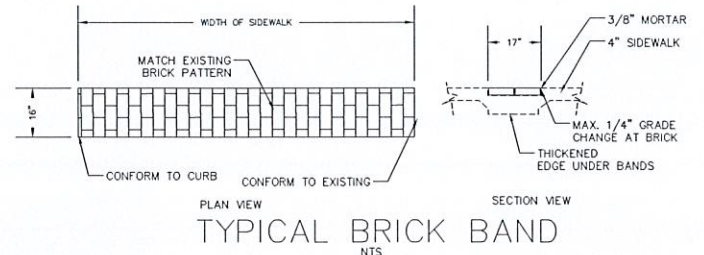
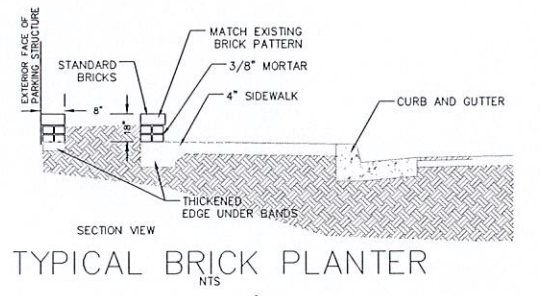
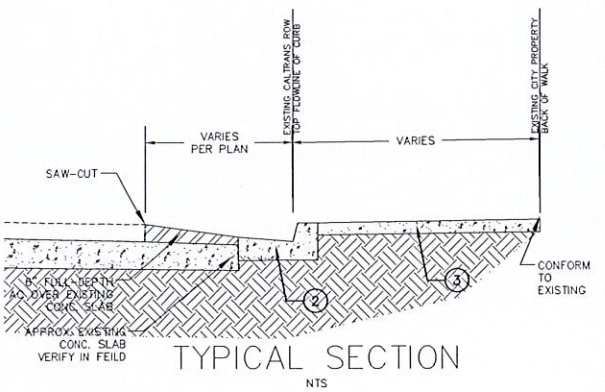
SHEET:
3
OF
12



- CONSTRUCTION NOTES:**
- (P) PROTECT IN PLACE.
 - (R) REMOVE AS SHOWN.
 - (1) EXISTING CALTRANS ROW FLOWLINE OF CURB
 - (2) CONSTRUCT CURB AND GUTTER PER CALTRANS STD. PLAN A87A
 - (3) CONSTRUCT 4-INCH PCC SIDEWALK OVER COMPACTED NATIVE
 - (4) CONSTRUCT 6-INCH THICK COMMERCIAL DRIVEWAY PER CALTRANS STD. PLAN A87A
 - (5) CONSTRUCT CURB RAMP PER CALTRANS STD. PLAN A88A, CASE PER PLAN.
 - (6) CONSTRUCT 6-INCH AC PLUG OVER EXISTING
 - (7) CONSTRUCT BRICK BAND PER CITY DTL
 - (8) CONSTRUCT BRICK PLANTER PER CITY DLT
 - (9) ADJUST UTILITY TO GRADE



WEST CURB FLOWLINE PROFILE
1"=10'



WARNING CAUTION
EXISTING UNDERGROUND UTILITIES
CONTACT: UNDERGROUND SERVICE
ALERT PHONE: (800) 642-2444
FOR MARKING PRIOR TO DIGGING

NO.	REVISION	BY	DATE

WILLDAN
Engineering
9281 Office Park Circle ~ Suite 100
Elk Grove, CA 95758 916.478.6002

DESIGNED:
DRAWN:
CHECKED:



CITY OF SONORA
NORTH WASHINGTON STREET
SONORA, CALIFORNIA 95337



**RED CHURCH PEDESTRIAN AND CIRCULATION
IMPROVEMENT PROJECT**
WASHINGTON ST IMPROVEMENTS

DATE:
OCTOBER 27, 2020
SCALE:
AS NOTED
PROJECT NO.:
108299

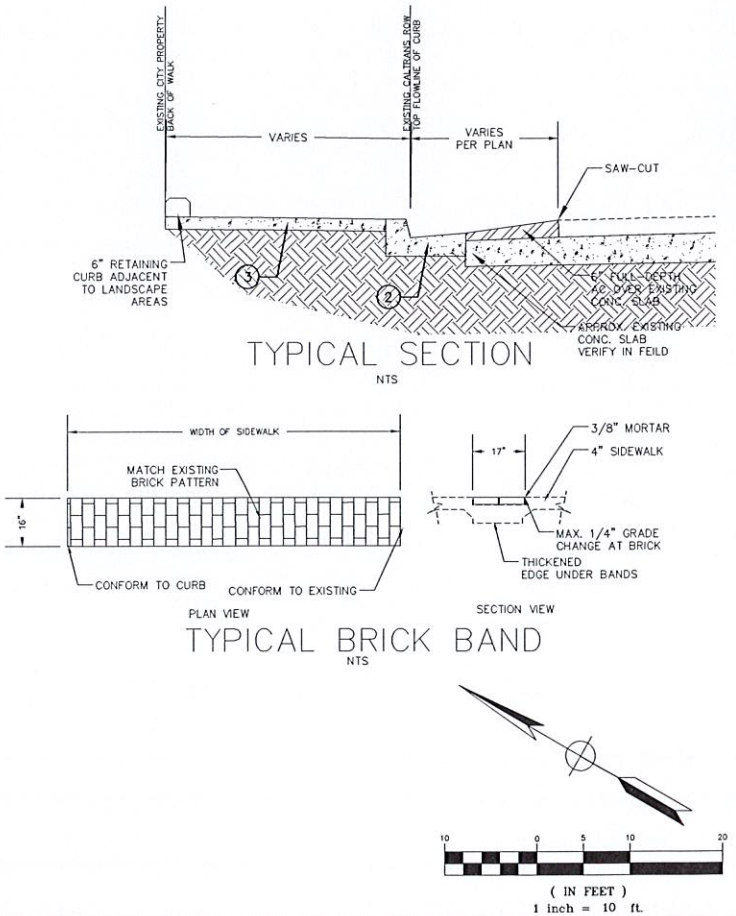
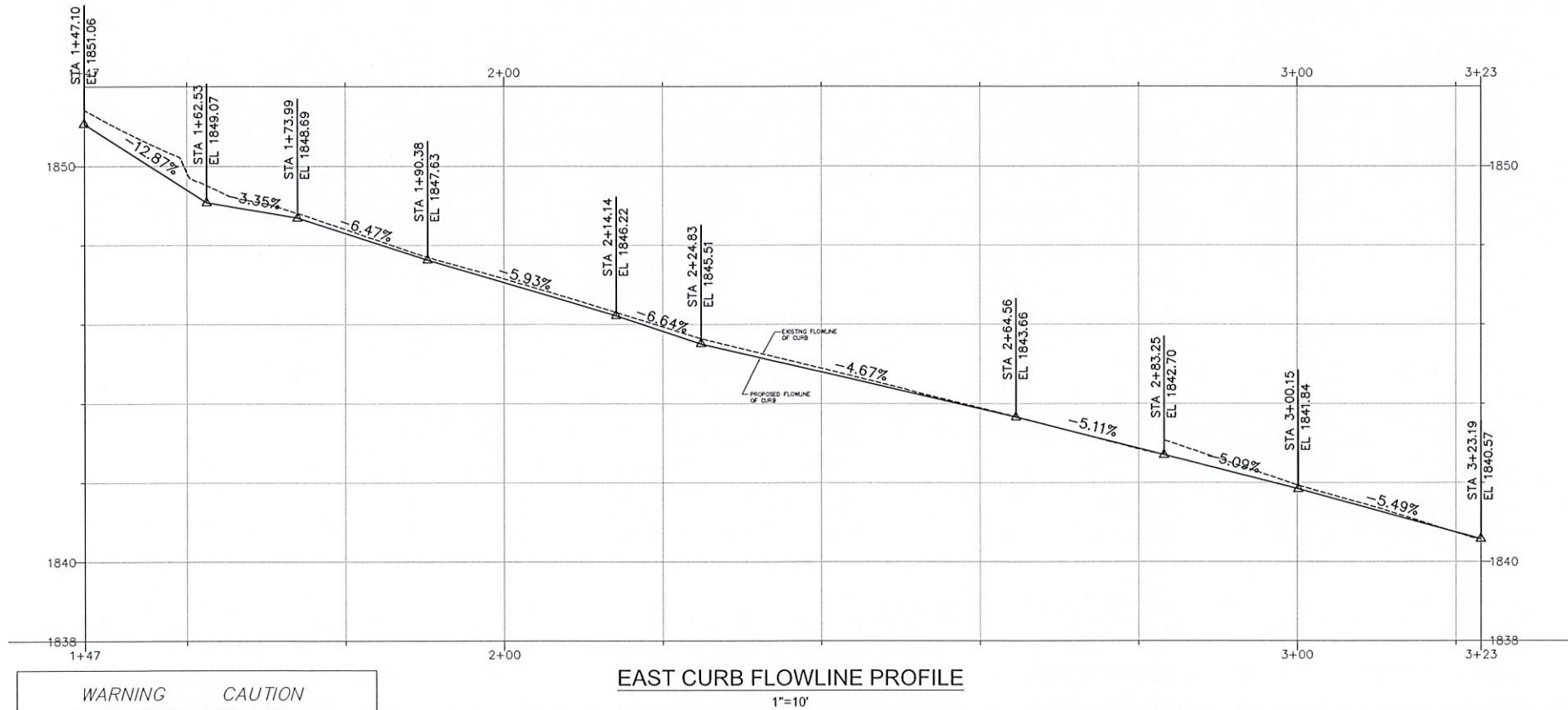
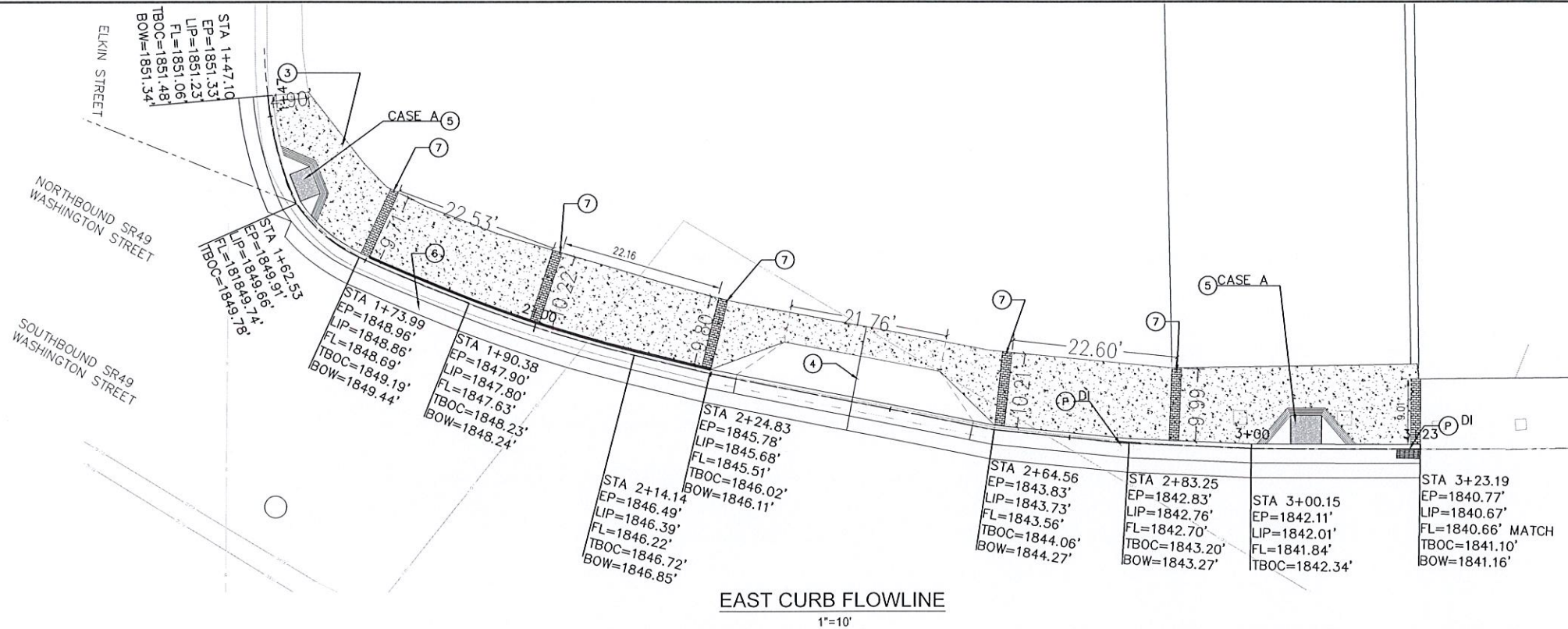
SHEET:
4
OF
12

CONSTRUCTION NOTES:

- PROTECT IN PLACE.
- REMOVE AS SHOWN.
- EXISTING CALTRANS ROW FLOWLINE OF CURB
- CONSTRUCT CURB AND GUTTER PER CALTRANS STD. PLAN A87A
- CONSTRUCT 4-INCH PCC SIDEWALK OVER COMPACTED NATIVE
- CONSTRUCT 6-INCH THICK COMMERCIAL DRIVEWAY PER CALTRANS STD. PLAN A87A
- CONSTRUCT CURB RAMP PER CALTRANS STD. PLAN A88A, CASE PER PLAN.
- CONSTRUCT 6-INCH AC PLUG OVER EXISTING
- CONSTRUCT BRICK BAND PER CITY DLT
- CONSTRUCT BRICK PLANTER PER CITY DLT
- ADJUST UTILITY TO GRADE

CONSTRUCTION NOTES:
SIGNING AND STRIPING

- INSTALL STRIPING DETAIL OR PAVEMENT MARKING AS INDICATED.
- REPAINT 12" WHITE CROSSWALK.



WARNING CAUTION
EXISTING UNDERGROUND UTILITIES
CONTACT: UNDERGROUND SERVICE
ALERT PHONE: (800) 642-2444
FOR MARKING PRIOR TO DIGGING



WILLDAN
Engineering
9281 Office Park Circle ~ Suite 100
Elk Grove, CA 95758 916.478.6002

DESIGNED:
DRAWN:
CHECKED:



CITY OF SONORA
NORTH WASHINGTON STREET
SONORA, CALIFORNIA 95337



RED CHURCH PEDESTRIAN AND CIRCULATION
IMPROVEMENT PROJECT
WASHINGTON ST IMPROVEMENTS

DATE:
OCTOBER 27, 2020
SCALE:
AS NOTED
PROJECT NO.:
108299

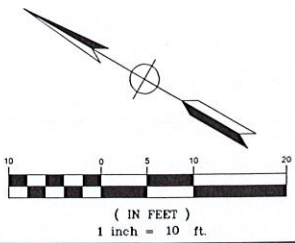
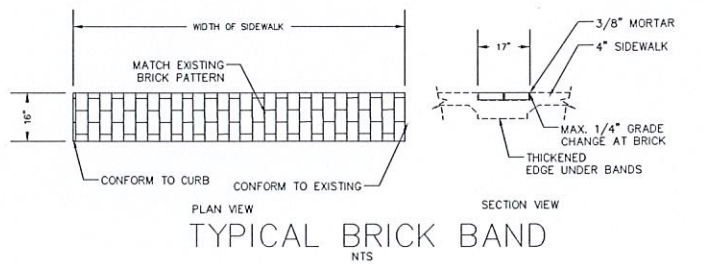
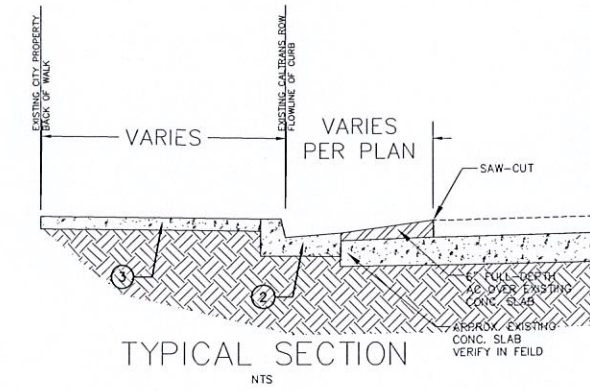
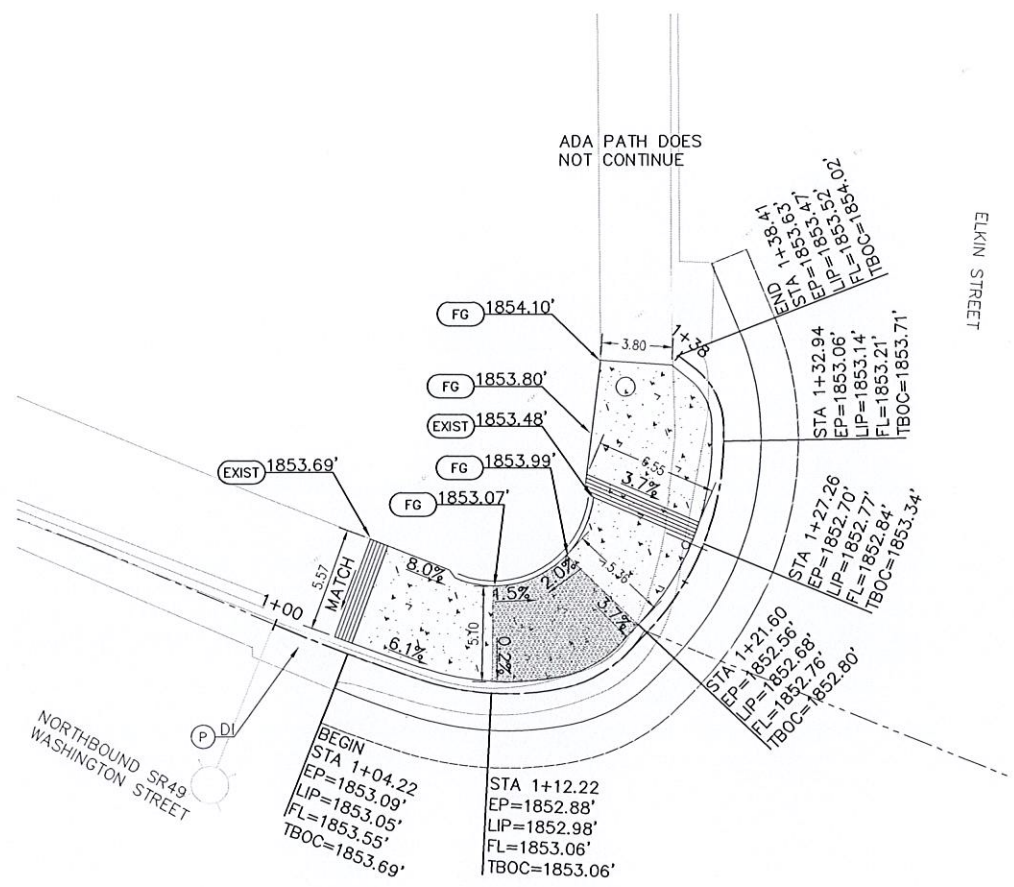
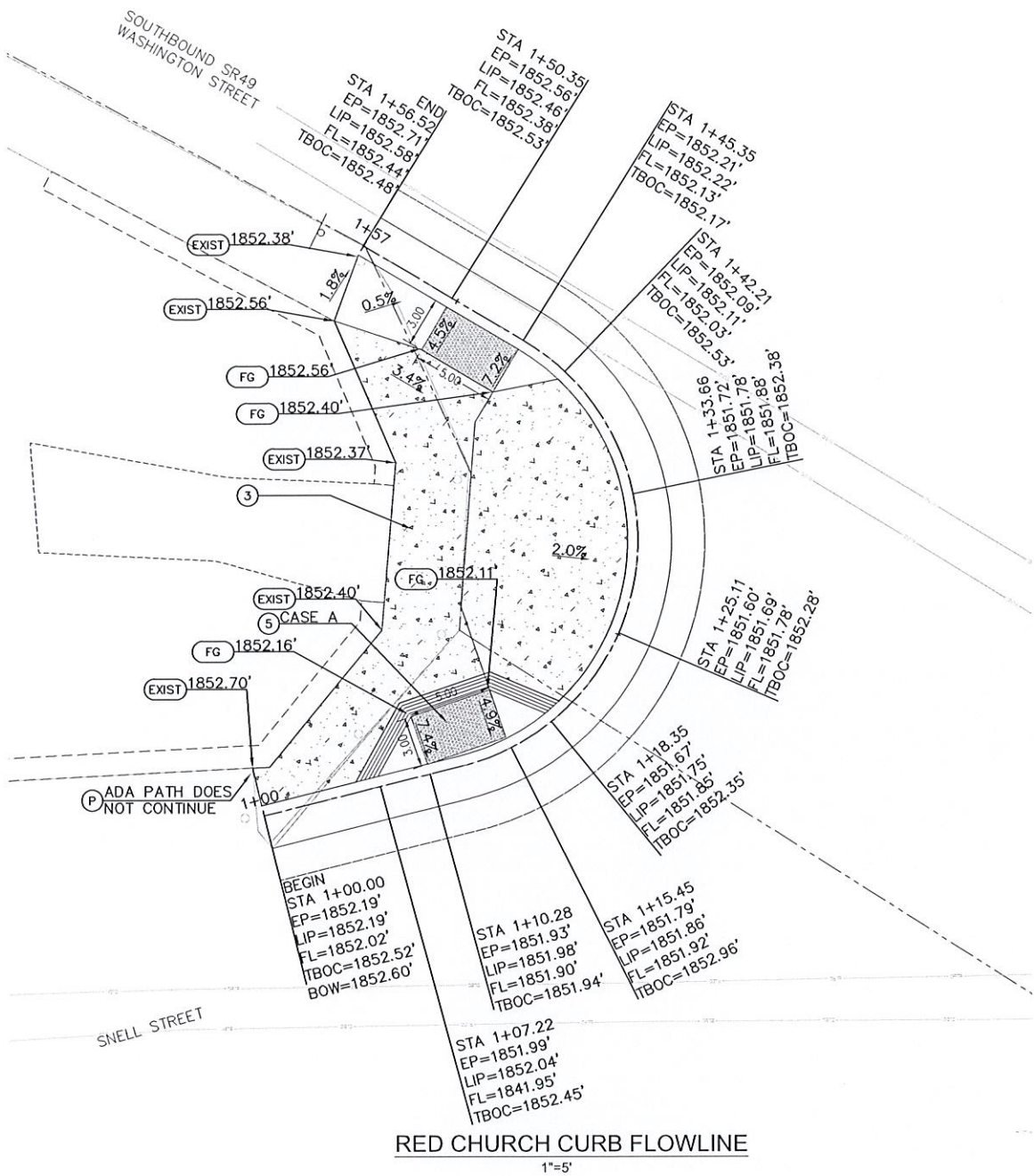
SHEET:
5
OF
12

CONSTRUCTION NOTES:

- PROTECT IN PLACE.
- REMOVE AS SHOWN.
- EXISTING CALTRANS ROW FLOWLINE OF CURB
- CONSTRUCT CURB AND GUTTER PER CALTRANS STD. PLAN A87A
- CONSTRUCT 4-INCH PCC SIDEWALK OVER COMPACTED NATIVE
- CONSTRUCT 6-INCH THICK COMMERCIAL DRIVEWAY PER CALTRANS STD. PLAN A87A
- CONSTRUCT CURB RAMP PER CALTRANS STD. PLAN A88A, CASE PER PLAN.
- CONSTRUCT 6-INCH AC PLUG OVER EXISTING
- CONSTRUCT BRICK BAND PER CITY DTL
- CONSTRUCT BRICK PLANTER PER CITY DLT
- ADJUST UTILITY TO GRADE

CONSTRUCTION NOTES:
SIGNING AND STRIPING

- INSTALL STRIPING DETAIL OR PAVEMENT MARKING AS INDICATED.
- REPAINT 12" WHITE CROSSWALK.



WARNING CAUTION
EXISTING UNDERGROUND UTILITIES
CONTACT: UNDERGROUND SERVICE
ALERT PHONE: (800) 642-2444
FOR MARKING PRIOR TO DIGGING

NO.	REVISION	BY	DATE

WILLDAN
Engineering
9281 Office Park Circle ~ Suite 100
Elk Grove, CA 95758 916.478.6002

DESIGNED:
DRAWN:
CHECKED:



CITY OF SONORA
NORTH WASHINGTON STREET
SONORA, CALIFORNIA 95337



RED CHURCH PEDESTRIAN AND CIRCULATION
IMPROVEMENT PROJECT
CURB RAMP AND MISC DETAILS

DATE:
OCTOBER 27, 2020
SCALE:
AS NOTED
PROJECT NO.:
108299

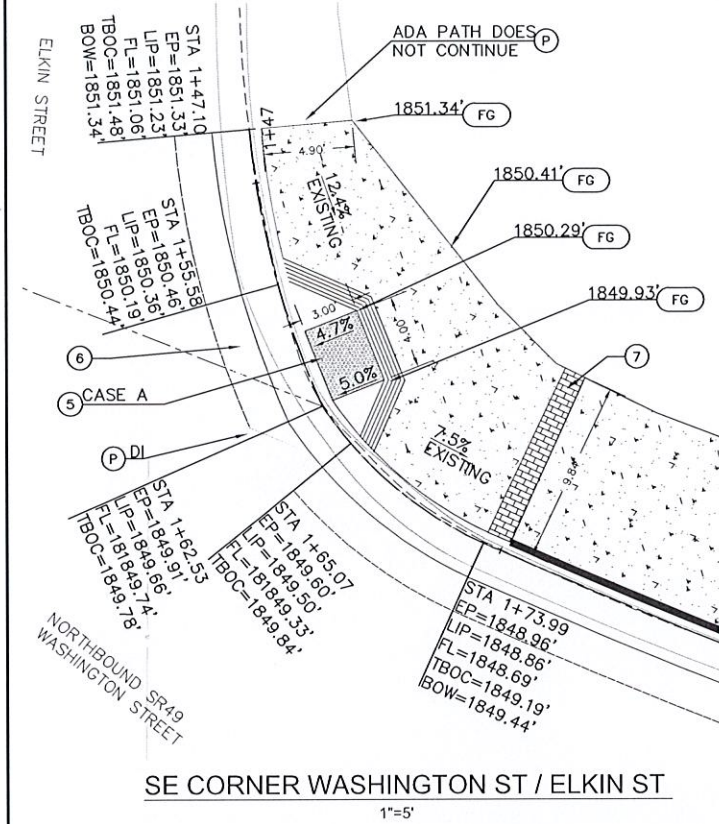
SHEET:
6
OF
12

CONSTRUCTION NOTES:

- (P) PROTECT IN PLACE.
- (R) REMOVE AS SHOWN.
- (1) EXISTING CALTRANS ROW FLOWLINE OF CURB
- (2) CONSTRUCT CURB AND GUTTER PER CALTRANS STD. PLAN A87A
- (3) CONSTRUCT 4-INCH PCC SIDEWALK OVER COMPACTED NATIVE
- (4) CONSTRUCT 6-INCH THICK COMMERCIAL DRIVEWAY PER CALTRANS STD. PLAN A87A
- (5) CONSTRUCT CURB RAMP PER CALTRANS STD. PLAN A88A, CASE PER PLAN.
- (6) CONSTRUCT 6-INCH AC PLUG OVER EXISTING
- (7) CONSTRUCT BRICK BAND PER CITY DTL
- (8) CONSTRUCT BRICK PLANTER PER CITY DLT
- (9) ADJUST UTILITY TO GRADE

CONSTRUCTION NOTES:
SIGNING AND STRIPING

- (1) INSTALL STRIPING DETAIL OR PAVEMENT MARKING AS INDICATED.
- (2) REPAINT 12" WHITE CROSSWALK.

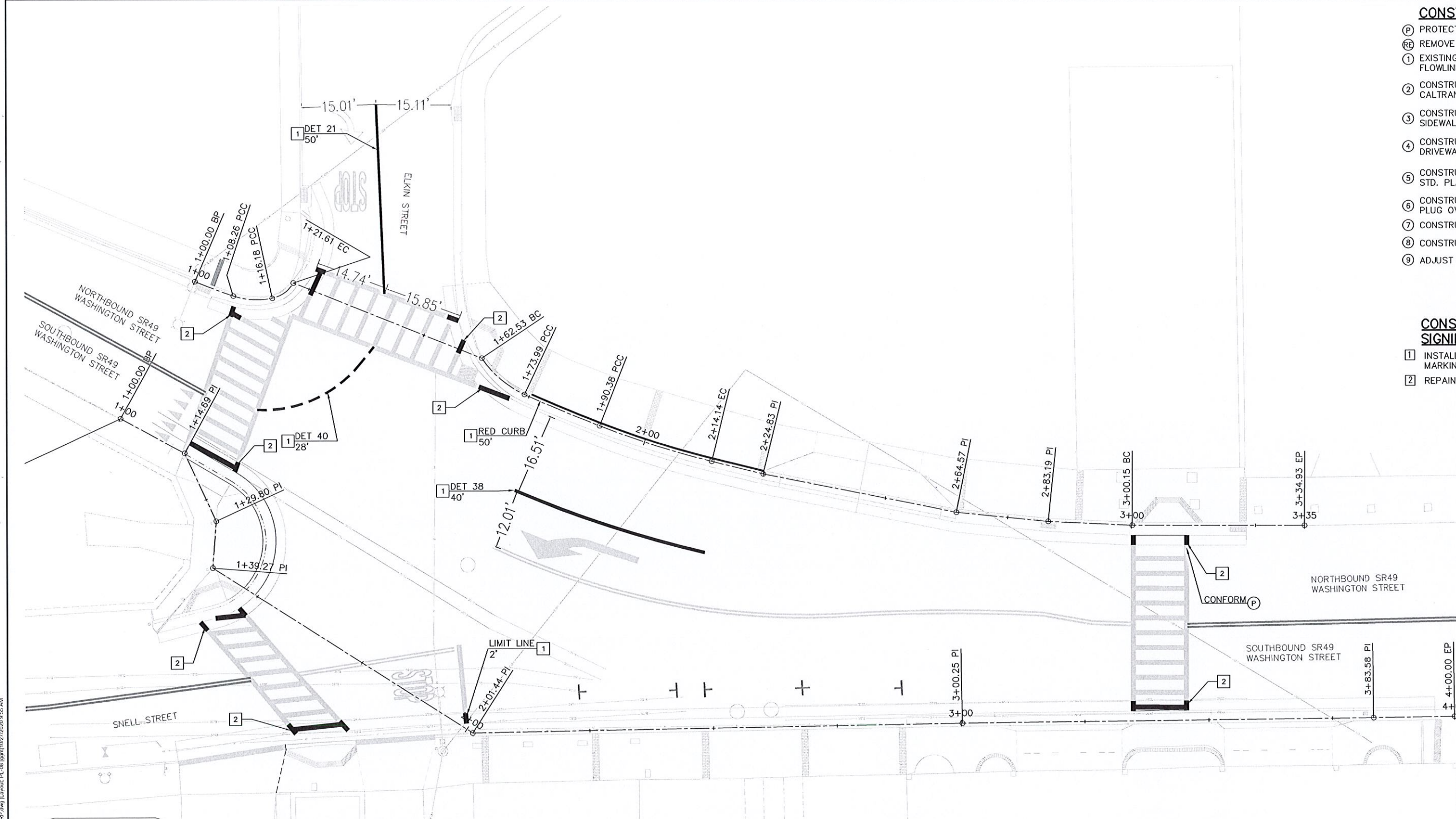


CONSTRUCTION NOTES:

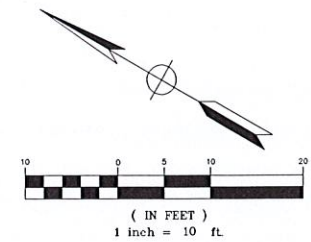
- (P) PROTECT IN PLACE.
- (RB) REMOVE AS SHOWN.
- (1) EXISTING CALTRANS ROW FLOWLINE OF CURB
- (2) CONSTRUCT CURB AND GUTTER PER CALTRANS STD. PLAN A87A
- (3) CONSTRUCT 4-INCH PCC SIDEWALK OVER COMPACTED NATIVE
- (4) CONSTRUCT 6-INCH THICK COMMERCIAL DRIVEWAY PER CALTRANS STD. PLAN A87A
- (5) CONSTRUCT CURB RAMP PER CALTRANS STD. PLAN A88A, CASE PER PLAN.
- (6) CONSTRUCT 6-INCH AC PLUG OVER EXISTING
- (7) CONSTRUCT BRICK BAND PER CITY DTL
- (8) CONSTRUCT BRICK PLANTER PER CITY DLT
- (9) ADJUST UTILITY TO GRADE

CONSTRUCTION NOTES:
SIGNING AND STRIPING

- (1) INSTALL STRIPING DETAIL OR PAVEMENT MARKING AS INDICATED.
- (2) REPAINT 12" WHITE CROSSWALK.



WARNING CAUTION
EXISTING UNDERGROUND UTILITIES
CONTACT: UNDERGROUND SERVICE
ALERT PHONE: (800) 642-2444
FOR MARKING PRIOR TO DIGGING



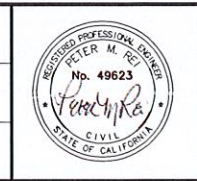
NO.	REVISION	BY	DATE



WILLDAN
Engineering

9281 Office Park Circle ~ Suite 100
Elk Grove, CA 95758 916.478.6002

DESIGNED:	
DRAWN:	
CHECKED:	



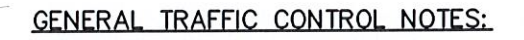
CITY OF SONORA
NORTH WASHINGTON STREET
SONORA, CALIFORNIA 95337



RED CHURCH PEDESTRIAN AND CIRCULATION
IMPROVEMENT PROJECT

SIGNING AND STRIPING PLAN

DATE: OCTOBER 27, 2020	SHEET: 8 OF 12
SCALE: AS NOTED	
PROJECT NO.: 108299	



- CONSTRUCTION NOTES:
TRAFFIC CONTROL

-

NO.	REVISION	BY	DATE



DESIGNED:
DRAWN:
CHECKED:



CITY OF SONORA
NORTH WASHINGTON STREET
SONORA, CALIFORNIA 95337

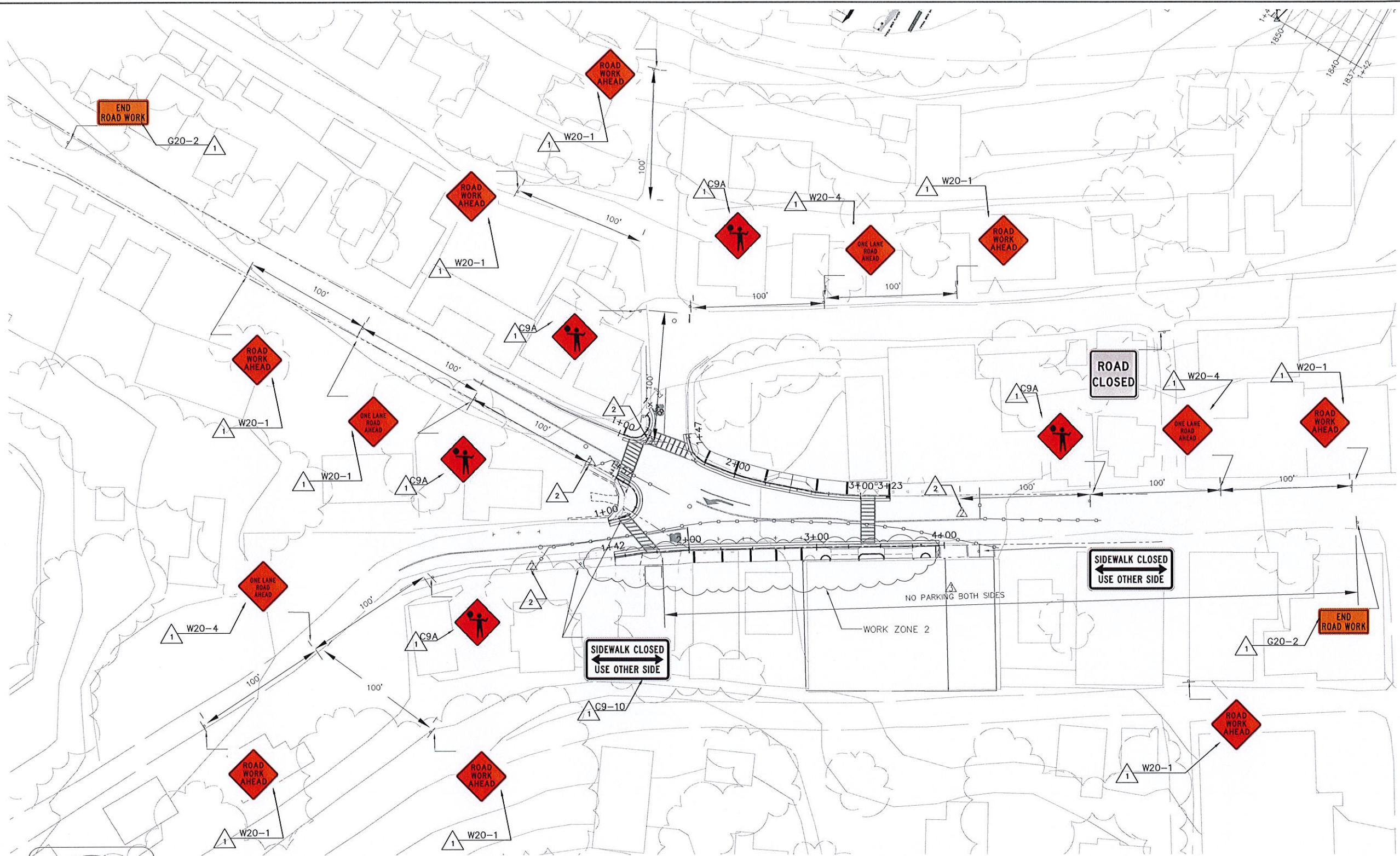


RED CHURCH PEDESTRIAN AND CIRCULATION
IMPROVEMENT PROJECT
ATTACHMENT D1
TRAFFIC CONTROL PLAN
NORTHBOUND LANE CLOSURE WORK ZONE 1

DATE:	OCTOBER 27, 2020
SCALE:	AS NOTED
PROJECT NO.:	108299

SHEET:
9
— OF —
12

C:\ACAD\Willdan\108299 Red Church\Sonora\950-PS&E\01-Plan\CAL TRANS ENCROACHMENT PLANS\108299-PL-02 1044111-CONTR-01-22.dwg Layout: ZONE-2 layout 10/27/2020 9:52 AM



GENERAL TRAFFIC CONTROL NOTES:

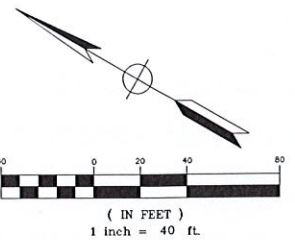
- ① NO MATERIALS OR VEHICLES ALLOWED IN TRANSITION AREA
- ② LANE CLOSED SIGNS ARE PERMITTED IN BUFFER AREAS
- ③ ALL SIGNS SHALL BE DISPLAYED DURING WORKING HOURS
- ④ SPACING OF SIGNAGE BASED ON URBAN ROAD 25 MPH, OR LESS
- ⑤ SIGN LOCATION AND SPACING SHOWN ON THIS PLAN ARE GUIDELINES. ONSITE PLACEMENT ALTERATIONS MAY BE REQUIRED.
- ⑥ WORK ZONE WILL BE MONITORED BY TRAFFIC PERSONNEL AT ALL TIMES
- ⑦ ROAD CLOSURES OF SIDE STREETS ALLOWED ONLY DURING WORKING HOURS. ALL ROADS SHALL BE OPEN DURING NON-WORKING HOURS.
- ⑧ CITY PARKING GARAGE, GROUND LEVEL, TO BE CLOSED DURING WORKING HOURS.

**CONSTRUCTION NOTES:
TRAFFIC CONTROL**

- △ PROVIDE TEMPORARY CONSTRUCTION AS INDICATED
- △ TRAFFIC SAFETY PERSONNEL WITH SIGN
- △ PARKING TO BE RESTRICTED
- △ PROVIDE CONES TO DIRECT TRAFFIC



WARNING CAUTION
EXISTING UNDERGROUND UTILITIES
CONTACT: UNDERGROUND SERVICE
ALERT PHONE: (800) 642-2444
FOR MARKING PRIOR TO DIGGING



NO.	REVISION	BY	DATE

WILLDAN
Engineering
9281 Office Park Circle ~ Suite 100
Elk Grove, CA 95758 916.478.6002

DESIGNED:
DRAWN:
CHECKED:



CITY OF SONORA
NORTH WASHINGTON STREET
SONORA, CALIFORNIA 95337



RED CHURCH PEDESTRIAN AND CIRCULATION
IMPROVEMENT PROJECT
ATTACHMENT D2
TRAFFIC CONTROL PLAN
SOUTHBOUND LANE CLOSURE WORK ZONE 2

DATE:
OCTOBER 27, 2020
SCALE:
AS NOTED
PROJECT NO.:
108299

SHEET:
10
OF
12







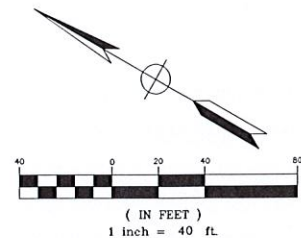
WILLDAN
Engineering

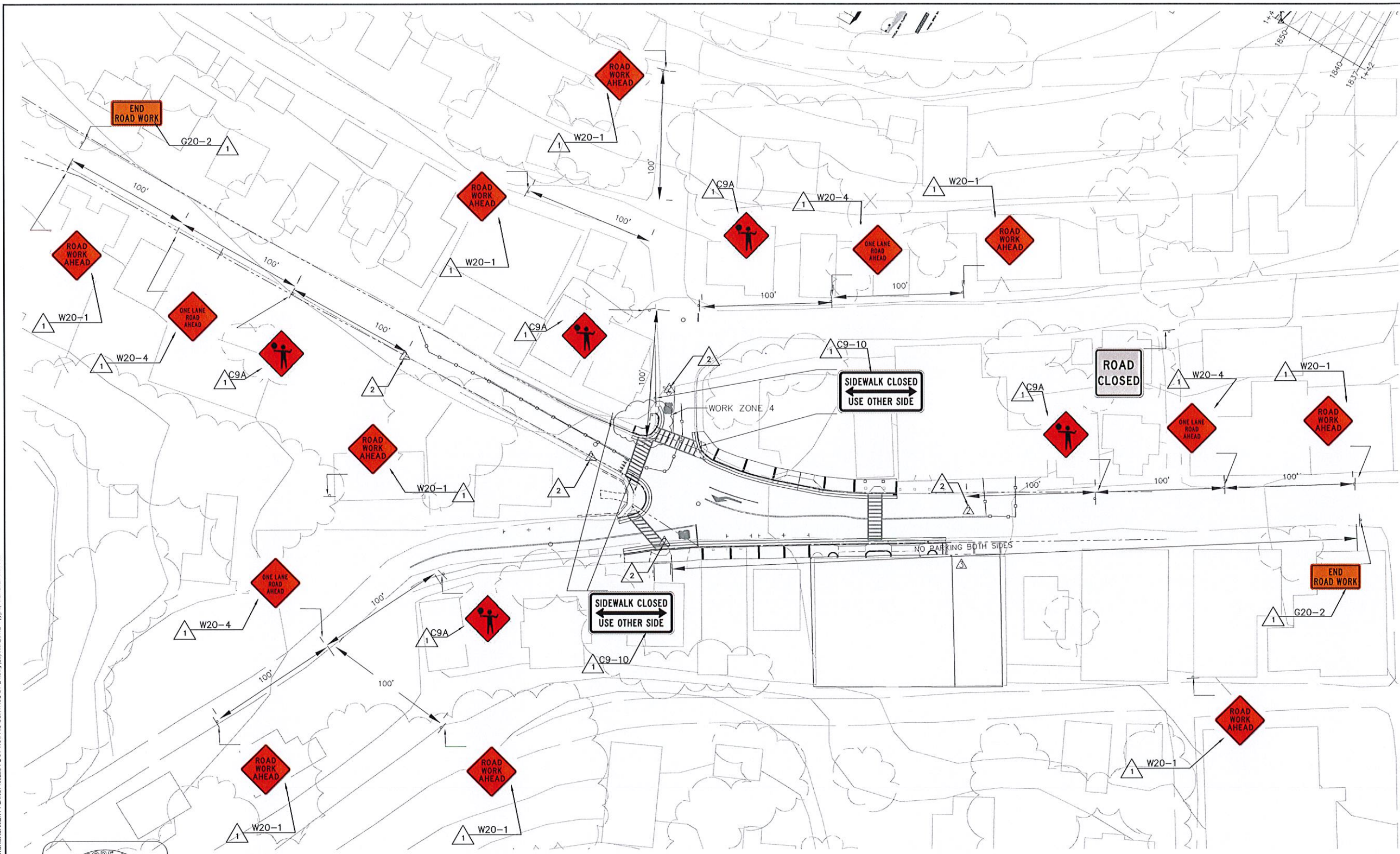
9281 Office Park Circle ~ Suite 100
Elk Grove, CA 95758 916.478.6002

DATE:	OCTOBER 27, 2020
SCALE:	AS NOTED
PROJECT NO.:	108299

SHEET:
11
— OF —
12

-  PROVIDE TEMPORARY CONSTRUCTION AS INDICATED
-  TRAFFIC SAFETY PERSONNEL WITH SIGN
-  PARKING TO BE RESTRICTED
-  PROVIDE CONES TO DIRECT TRAFFIC





GENERAL TRAFFIC CONTROL NOTES:

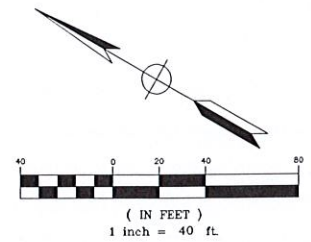
- 1 NO MATERIALS OR VEHICLES ALLOWED IN TRANSITION AREA
- 2 LANE CLOSED SIGNS ARE PERMITTED IN BUFFER AREAS
- 3 ALL SIGNS SHALL BE DISPLAYED DURING WORKING HOURS
- 4 SPACING OF SIGNAGE BASED ON URBAN ROAD 25 MPH, OR LESS
- 5 SIGN LOCATION AND SPACING SHOWN ON THIS PLAN ARE GUIDELINES. ONSITE PLACEMENT ALTERATIONS MAY BE REQUIRED.
- 6 WORK ZONE WILL BE MONITORED BY TRAFFIC PERSONNEL AT ALL TIMES
- 7 ROAD CLOSURES OF SIDE STREETS ALLOWED ONLY DURING WORKING HOURS. ALL ROADS SHALL BE OPEN DURING NON-WORKING HOURS.
- 8 CITY PARKING GARAGE, GROUND LEVEL, TO BE CLOSED DURING WORKING HOURS.

**CONSTRUCTION NOTES:
TRAFFIC CONTROL**

- ▲ PROVIDE TEMPORARY CONSTRUCTION AS INDICATED
- ▲ TRAFFIC SAFETY PERSONNEL WITH SIGN
- ▲ PARKING TO BE RESTRICTED
- ▲ PROVIDE CONES TO DIRECT TRAFFIC



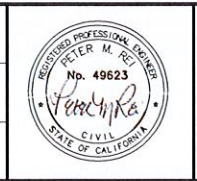
WARNING CAUTION
EXISTING UNDERGROUND UTILITIES
CONTACT: UNDERGROUND SERVICE
ALERT PHONE: (800) 642-2444
FOR MARKING PRIOR TO DIGGING



NO.	REVISION	BY	DATE

WILLDAN
Engineering
9281 Office Park Circle ~ Suite 100
Elk Grove, CA 95758 916.478.6002

DESIGNED:
DRAWN:
CHECKED:



CITY OF SONORA
NORTH WASHINGTON STREET
SONORA, CALIFORNIA 95337



**RED CHURCH PEDESTRIAN AND CIRCULATION
IMPROVEMENT PROJECT**
ATTACHMENT D4
TRAFFIC CONTROL PLAN
NORTHBOUND LANE CLOSURE WORK ZONE 4

DATE: OCTOBER 27, 2020	SHEET: 12
SCALE: AS NOTED	OF 12
PROJECT NO.: 108299	

RED CHURCH PEDESTRIAN AND CIRCULATION
IMPROVEMENT PROJECT
WASHINGTON STREET
BRICK DETAILS

SHEET INDEX:	
SHEET 1	TITLE SHEET
SHEET 2	WASHINGTON ST PLANTER IMPROVEMENTS
SHEET 3	WASHINGTON ST HITCHING POST IMPROVEMENTS
SHEET 4	WASHINGTON ST BACK CURB IMPROVEMENTS
SHEET 5	WASHINGTON ST PARKING GARAGE SIGNAGE

NO.	REVISION	BY	DATE



WILLDAN
Engineering

9281 Office Park Circle ~ Suite 100
Elk Grove, CA 95758 916.478.6002

DESIGNED:
DRAWN:
CHECKED:



CITY OF SONORA
NORTH WASHINGTON STREET
SONORA, CALIFORNIA 95337



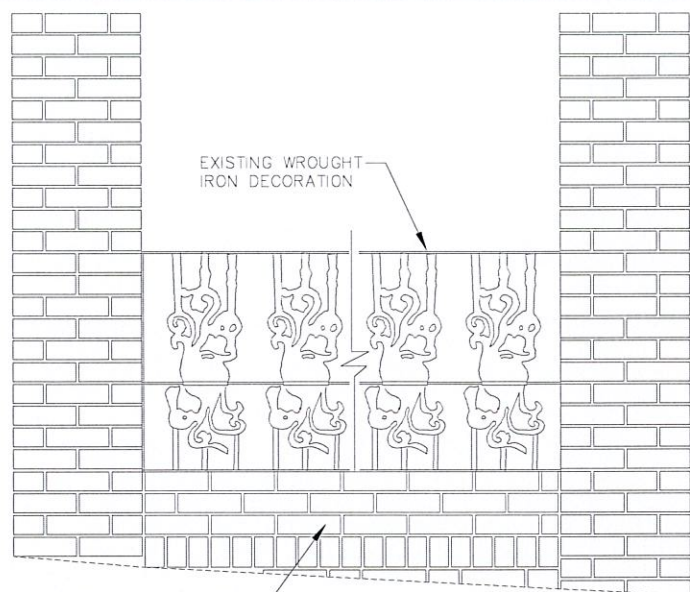
RED CHURCH PEDESTRIAN AND CIRCULATION
IMPROVEMENT PROJECT
TITLE SHEET
WASHINGTON STREET
BRICK IMPROVEMENTS

DATE: OCTOBER 08, 2021
SCALE: AS NOTED
PROJECT NO.: 108299

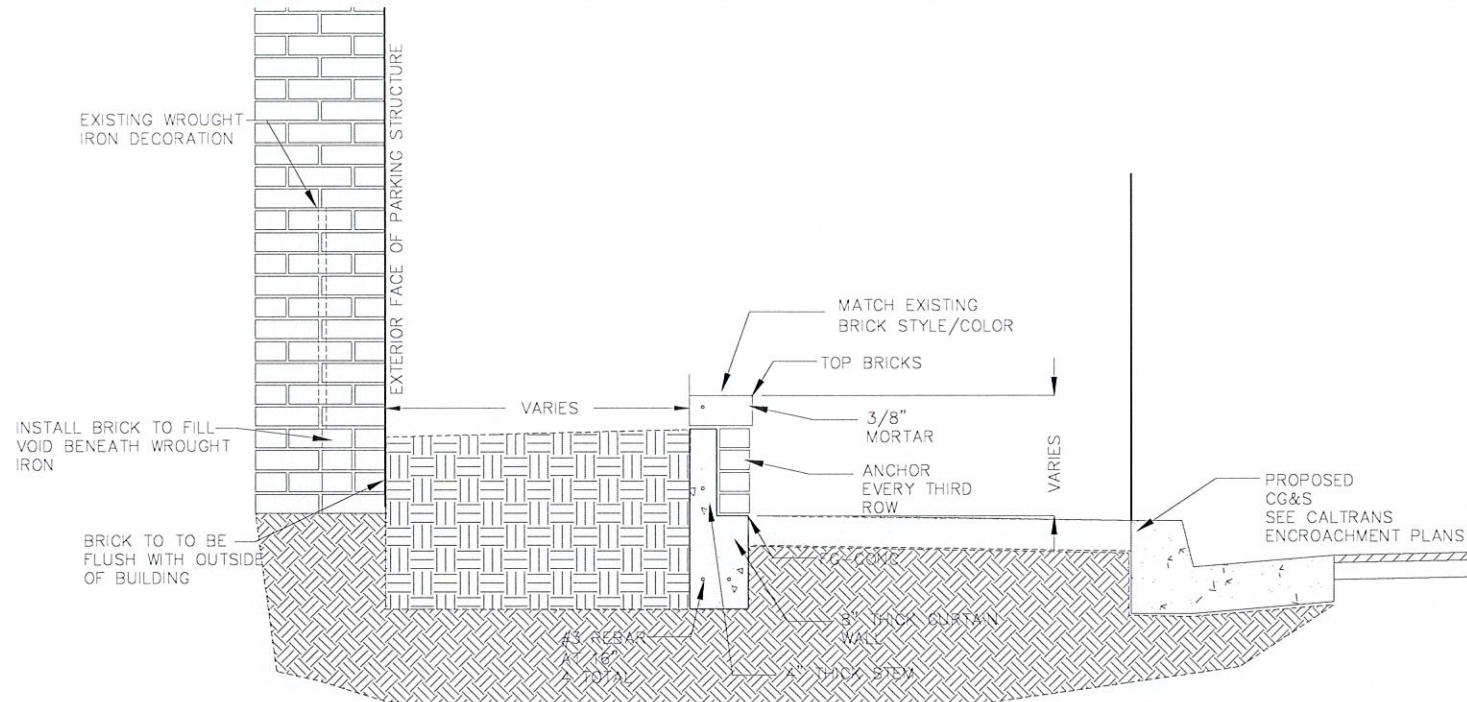
SHEET:	1
OF	5

C:\ACAD\Willdan\108299 Red Church Sonora\900-PS&E\901-Plans\108299-PL-01-TITLE-CITY.dwg [Layout: PL-01] 10/08/2021 1:48 PM

RED CHURCH PEDESTRIAN IMPROVEMENT PROJECT



FRONT



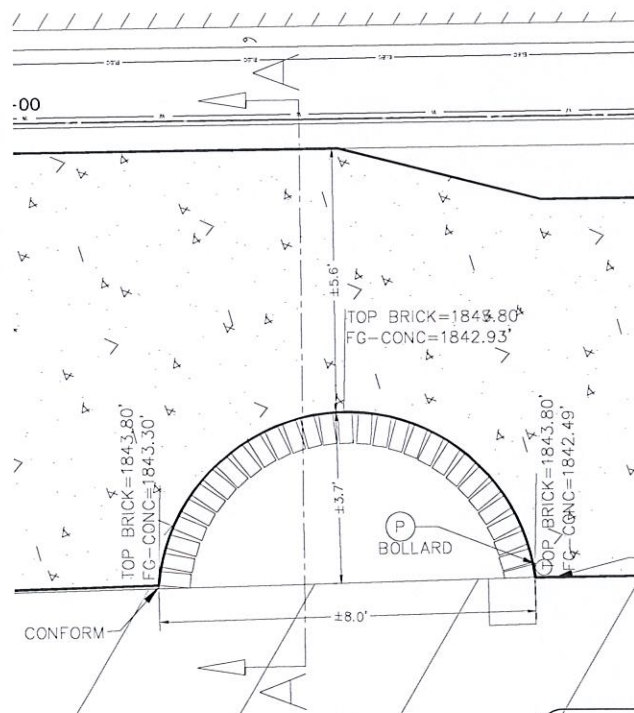
SECTION VIEW
PLANTER SECTION A-A' DETAIL
1"=2'

CONSTRUCTION NOTES:

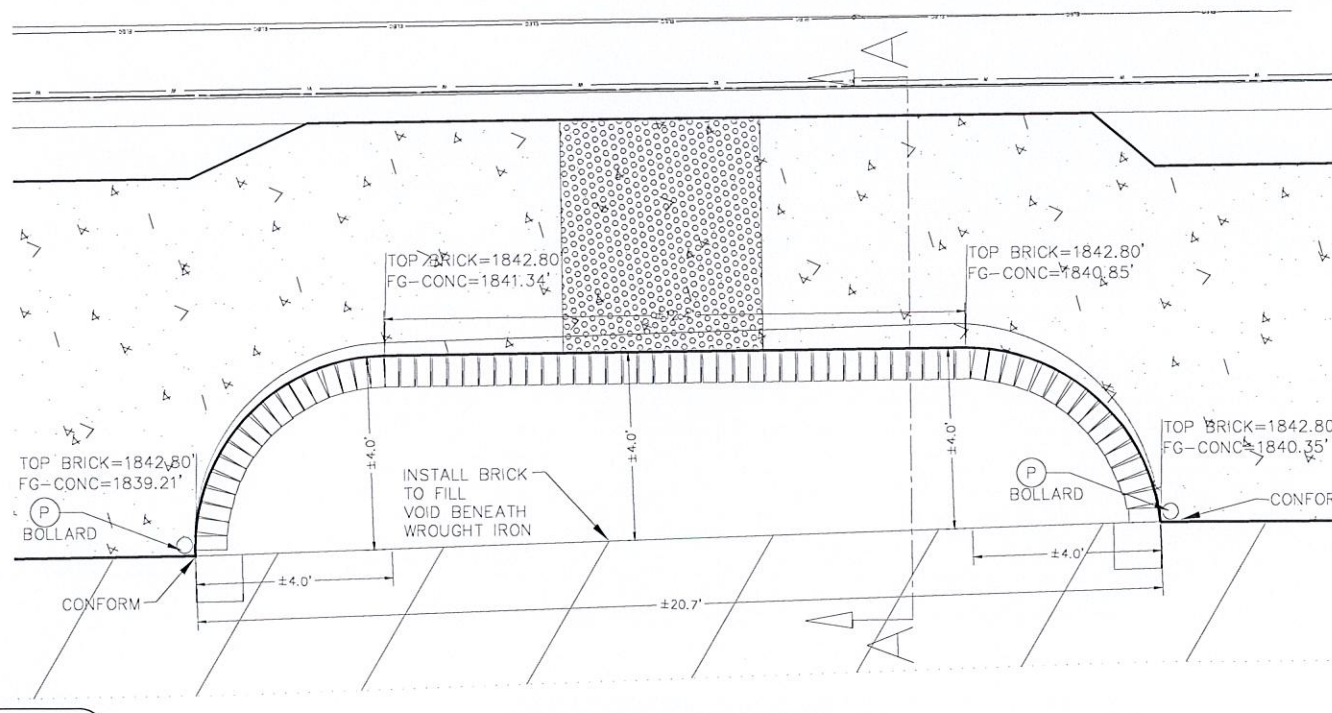
- (P) PROTECT IN PLACE.
- (RE) REMOVE AS SHOWN.
- (1) EXISTING CALTRANS ROW FLOWLINE OF CURB
- (2) CONSTRUCT CURB AND GUTTER PER CALTRANS STD. PLAN A87A
- (3) CONSTRUCT 4-INCH PCC SIDEWALK OVER COMPACTED NATIVE
- (4) CONSTRUCT 6-INCH THICK COMMERCIAL DRIVEWAY PER CALTRANS STD. PLAN A87A
- (5) CONSTRUCT CURB RAMP PER CALTRANS STD. PLAN A88A, CASE PER PLAN.
- (6) CONSTRUCT 6-INCH AC PLUG OVER EXISTING
- (7) CONSTRUCT BRICK BAND PER CITY DTL
- (8) CONSTRUCT BRICK PLANTER PER CITY DLT
- (9) ADJUST UTILITY TO GRADE

CONSTRUCTION NOTES:
SIGNING AND STRIPING

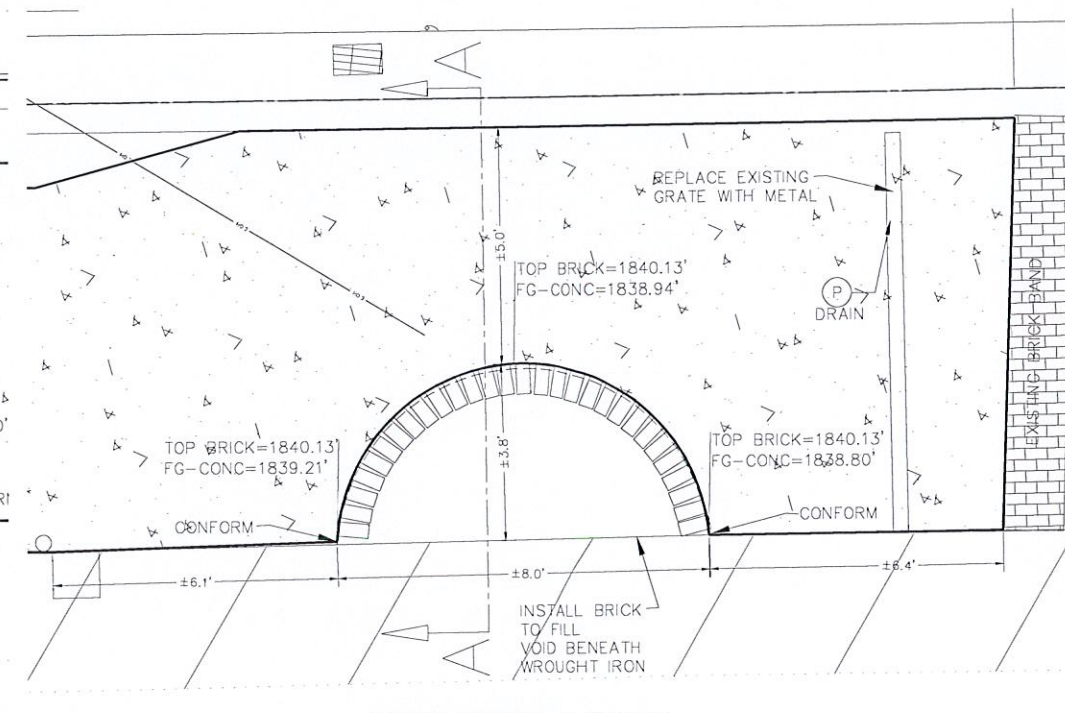
- (1) INSTALL STRIPING DETAIL OR PAVEMENT MARKING AS INDICATED.
- (2) REPAINT 12" WHITE CROSSWALK.



NORTH BRICK PLANTER
1"=2'



MIDDLE BRICK PLANTER
1"=2'



SOUTH BRICK PLANTER
1"=2'

WARNING CAUTION
EXISTING UNDERGROUND UTILITIES
CONTACT: UNDERGROUND SERVICE
ALERT PHONE: (800) 642-2444
FOR MARKING PRIOR TO DIGGING



NO.	REVISION	BY	DATE

WILLDAN
Engineering
9281 Office Park Circle ~ Suite 100
Elk Grove, CA 95758 916.478.6002

DESIGNED:
DRAWN:
CHECKED:



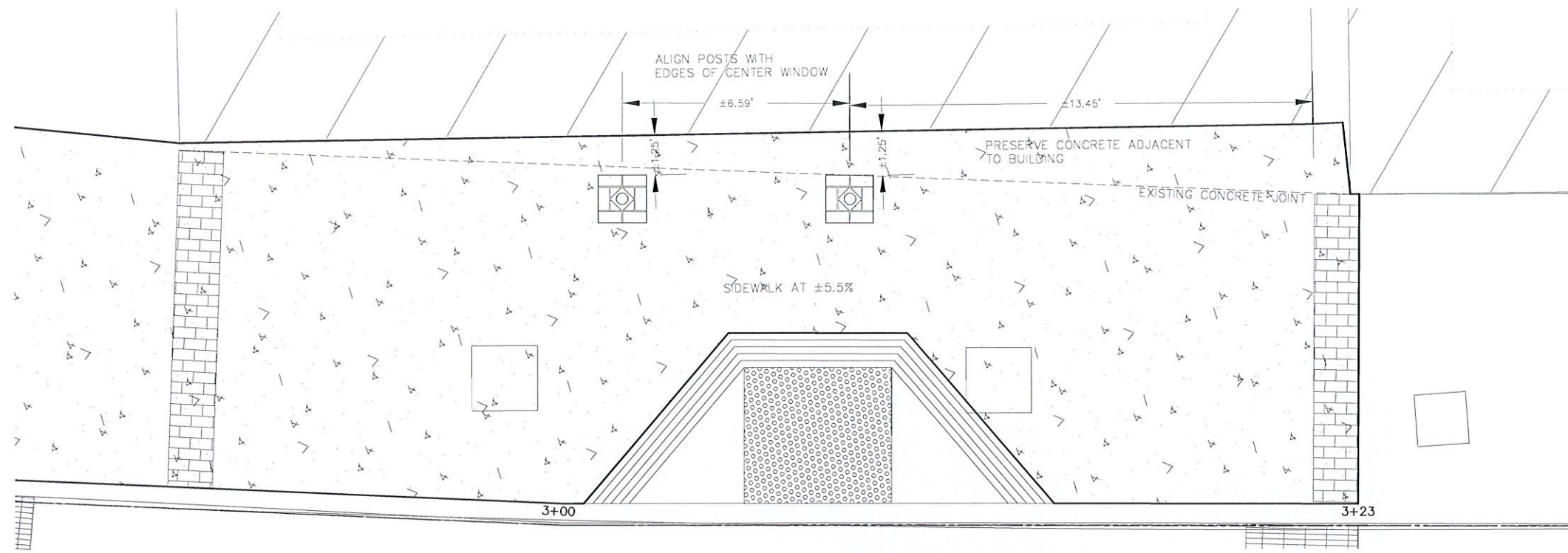
CITY OF SONORA
NORTH WASHINGTON STREET
SONORA, CALIFORNIA 95337



RED CHURCH PEDESTRIAN AND CIRCULATION
IMPROVEMENT PROJECT
WASHINGTON STREET
PLANTER IMPROVEMENTS

DATE:
OCTOBER 08, 2021
SCALE:
AS NOTED
PROJECT NO.:
108299

SHEET:
2
OF
5



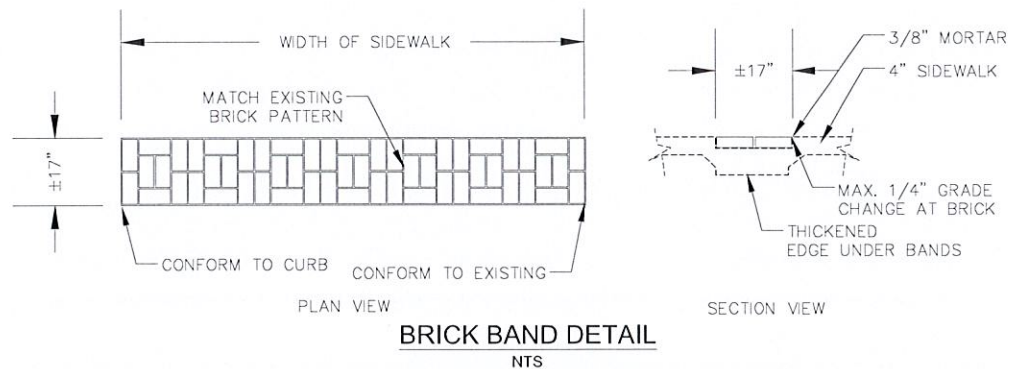
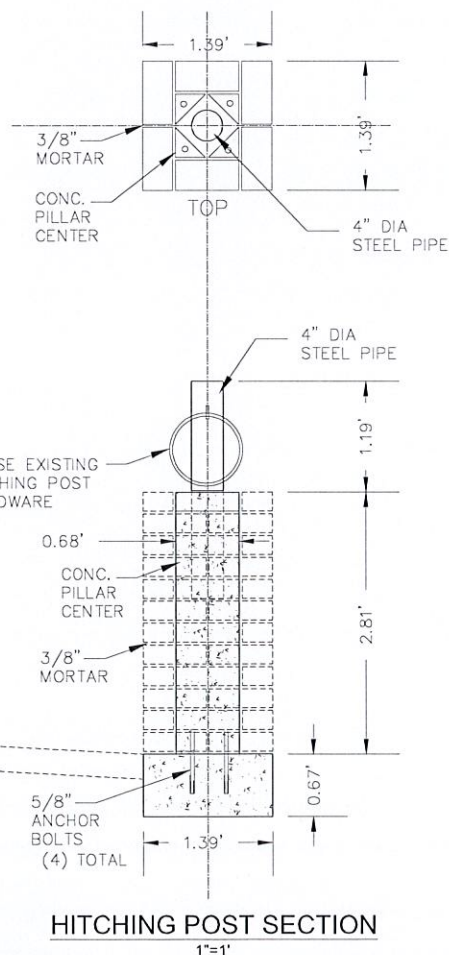
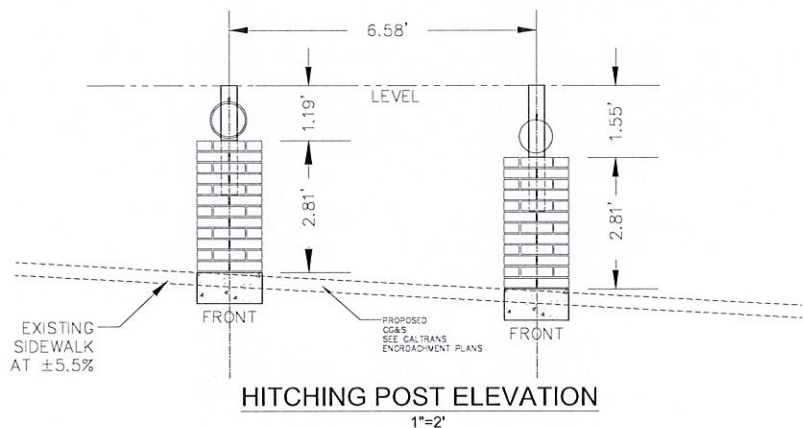
CONSTRUCTION NOTES:

- PROTECT IN PLACE.
- REMOVE AS SHOWN.
- EXISTING CALTRANS ROW FLOWLINE OF CURB
- CONSTRUCT CURB AND GUTTER PER CALTRANS STD. PLAN A87A
- CONSTRUCT 4-INCH PCC SIDEWALK OVER COMPACTED NATIVE
- CONSTRUCT 6-INCH THICK COMMERCIAL DRIVEWAY PER CALTRANS STD. PLAN A87A
- CONSTRUCT CURB RAMP PER CALTRANS STD. PLAN A88A, CASE PER PLAN.
- CONSTRUCT 6-INCH AC PLUG OVER EXISTING
- CONSTRUCT BRICK BAND PER CITY DTL
- CONSTRUCT BRICK PLANTER PER CITY DLT
- ADJUST UTILITY TO GRADE

CONSTRUCTION NOTES:
SIGNING AND STRIPING

- INSTALL STRIPING DETAIL OR PAVEMENT MARKING AS INDICATED.
- REPAINT 12" WHITE CROSSWALK.

BRICK HITCHING POSTS
1"=2'



WARNING CAUTION
EXISTING UNDERGROUND UTILITIES
CONTACT: UNDERGROUND SERVICE
ALERT PHONE: (800) 642-2444
FOR MARKING PRIOR TO DIGGING

NO.	REVISION	BY	DATE

WILLDAN
Engineering
9281 Office Park Circle ~ Suite 100
Elk Grove, CA 95758 916.478.6002

DESIGNED:
DRAWN:
CHECKED:



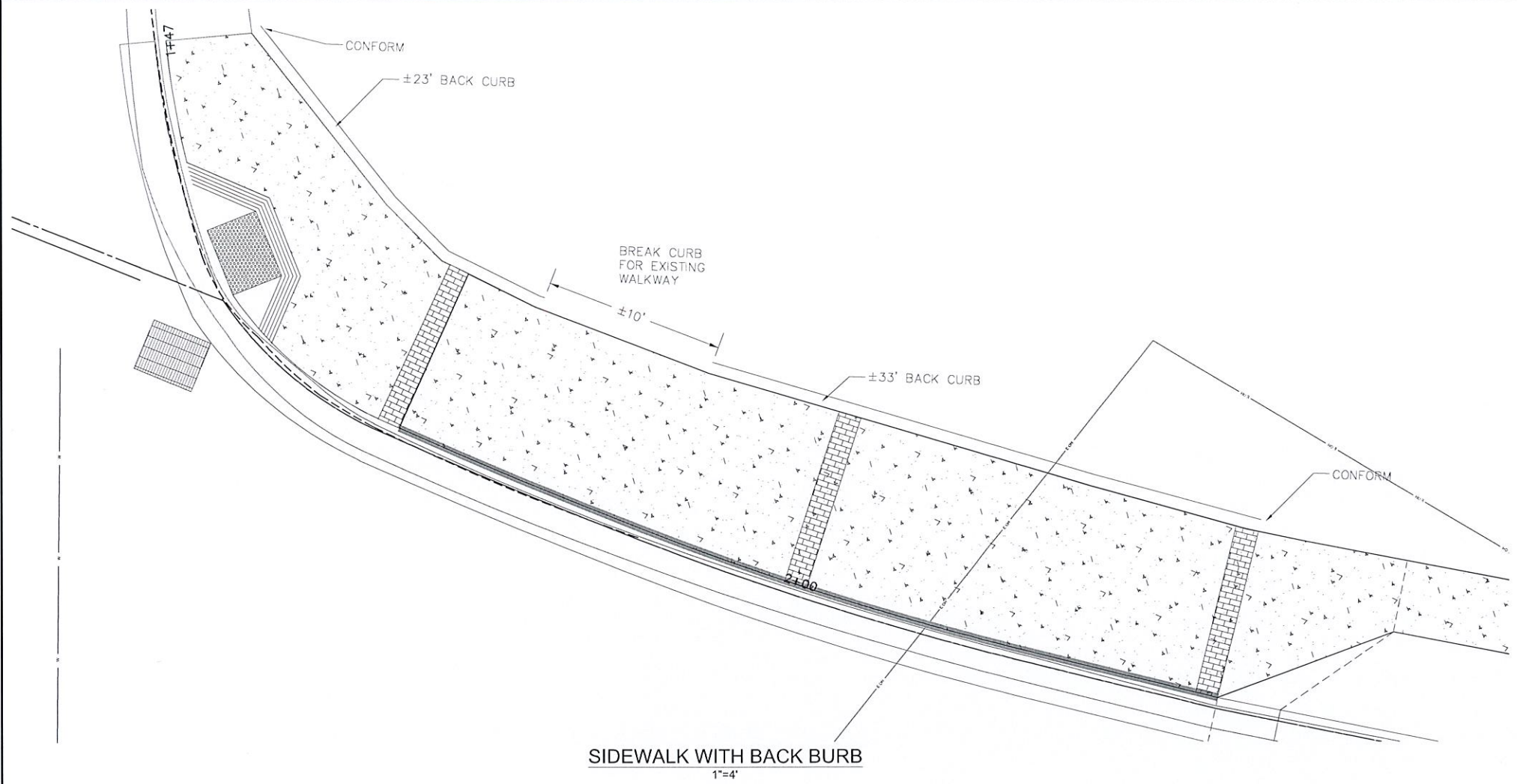
CITY OF SONORA
NORTH WASHINGTON STREET
SONORA, CALIFORNIA 95337



RED CHURCH PEDESTRIAN AND CIRCULATION
IMPROVEMENT PROJECT
WASHINGTON ST IMPROVEMENTS

DATE:
OCTOBER 08, 2021
SCALE:
AS NOTED
PROJECT NO.:
108299

SHEET:
3
OF
5

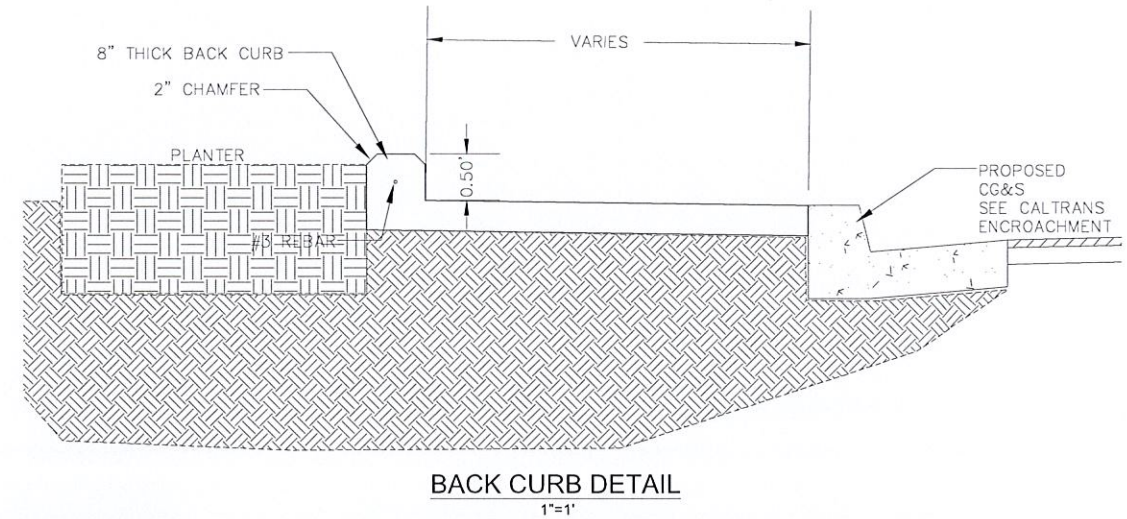
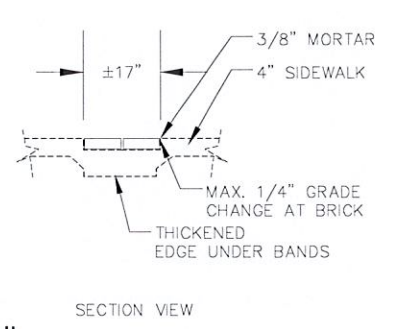
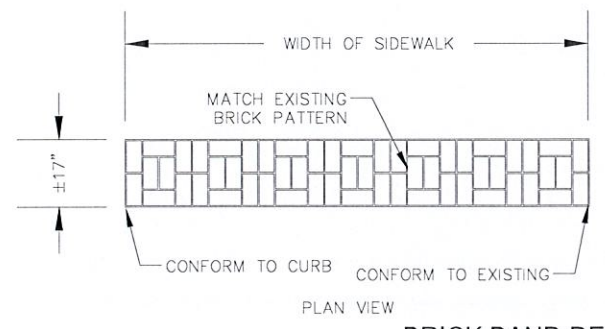


- CONSTRUCTION NOTES:**
- Ⓟ PROTECT IN PLACE.
 - Ⓡ REMOVE AS SHOWN.
 - ① EXISTING CALTRANS ROW FLOWLINE OF CURB
 - ② CONSTRUCT CURB AND GUTTER PER CALTRANS STD. PLAN A87A
 - ③ CONSTRUCT 4-INCH PCC SIDEWALK OVER COMPACTED NATIVE
 - ④ CONSTRUCT 6-INCH THICK COMMERCIAL DRIVEWAY PER CALTRANS STD. PLAN A87A
 - ⑤ CONSTRUCT CURB RAMP PER CALTRANS STD. PLAN A88A, CASE PER PLAN.
 - ⑥ CONSTRUCT 6-INCH AC PLUG OVER EXISTING
 - ⑦ CONSTRUCT BRICK BAND PER CITY DTL
 - ⑧ CONSTRUCT BRICK PLANTER PER CITY DLT
 - ⑨ ADJUST UTILITY TO GRADE

- CONSTRUCTION NOTES:
SIGNING AND STRIPING**
- ① INSTALL STRIPING DETAIL OR PAVEMENT MARKING AS INDICATED.
 - ② REPAINT 12" WHITE CROSSWALK.



WARNING CAUTION
EXISTING UNDERGROUND UTILITIES
CONTACT: UNDERGROUND SERVICE
ALERT PHONE: (800) 642-2444
FOR MARKING PRIOR TO DIGGING



C:\CAD\Willdan\108299 Red Church Sonora\904-P&E\091-Plan\108299-H-Q-Road-City.dwg [Layout: PL-01] 10/8/2021 1:42 PM

NO.	REVISION	BY	DATE



WILLDAN
Engineering
9281 Office Park Circle ~ Suite 100
Elk Grove, CA 95758 916.478.6002

DESIGNED:	
DRAWN:	
CHECKED:	



CITY OF SONORA
NORTH WASHINGTON STREET
SONORA, CALIFORNIA 95337



**RED CHURCH PEDESTRIAN AND CIRCULATION
IMPROVEMENT PROJECT**

WASHINGTON ST IMPROVEMENTS

DATE: OCTOBER 08, 2021
SCALE: AS NOTED
PROJECT NO.: 108299

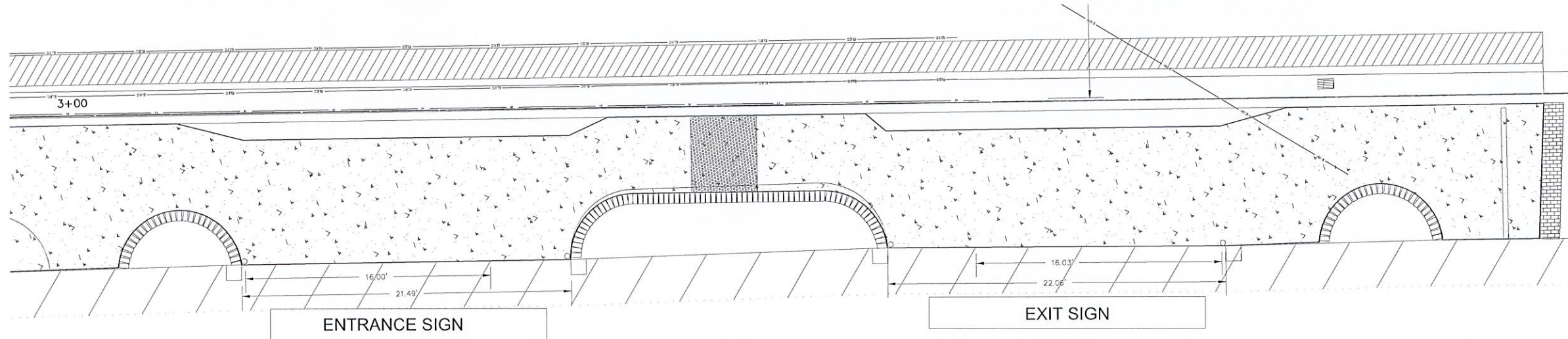
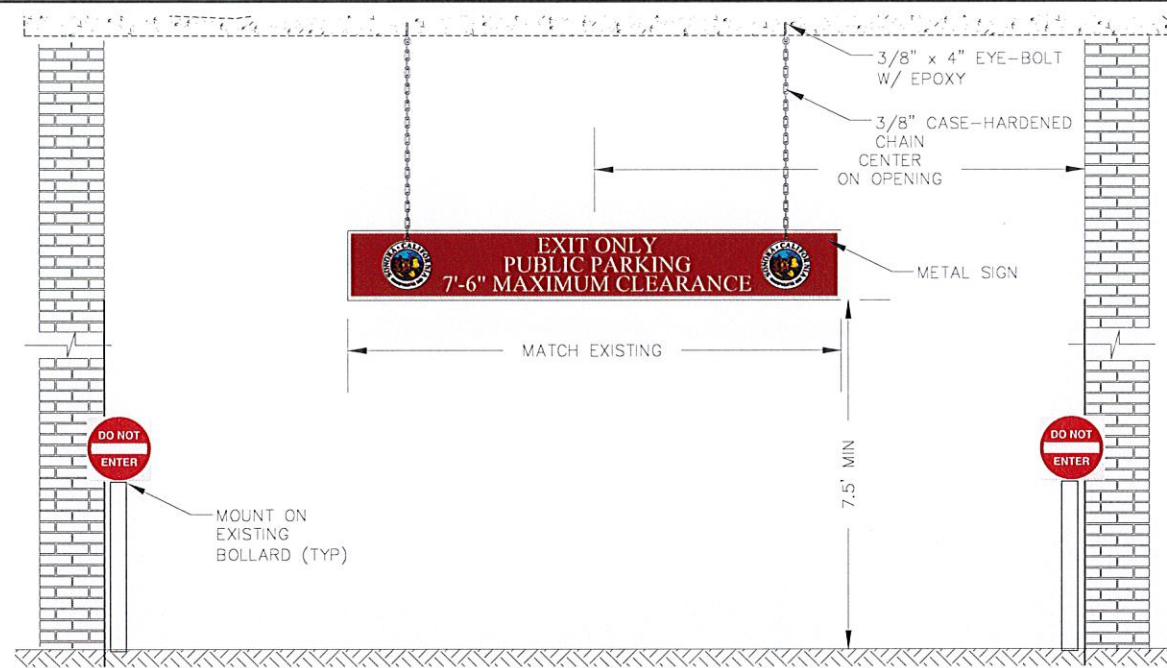
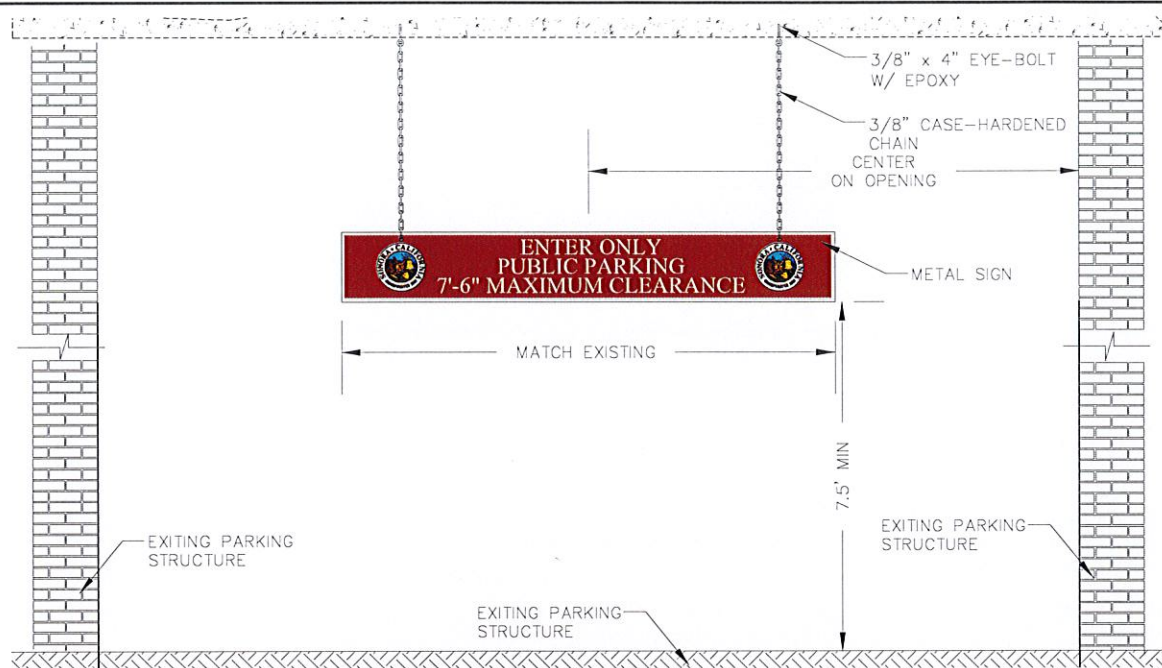
SHEET:	4
OF	5

CONSTRUCTION NOTES:

- PROTECT IN PLACE.
- REMOVE AS SHOWN.
- EXISTING CALTRANS ROW FLOWLINE OF CURB
- CONSTRUCT CURB AND GUTTER PER CALTRANS STD. PLAN A87A
- CONSTRUCT 4-INCH PCC SIDEWALK OVER COMPACTED NATIVE
- CONSTRUCT 6-INCH THICK COMMERCIAL DRIVEWAY PER CALTRANS STD. PLAN A87A
- CONSTRUCT CURB RAMP PER CALTRANS STD. PLAN A88A, CASE PER PLAN.
- CONSTRUCT 6-INCH AC PLUG OVER EXISTING
- CONSTRUCT BRICK BAND PER CITY DTL
- CONSTRUCT BRICK PLANTER PER CITY DLT
- ADJUST UTILITY TO GRADE

CONSTRUCTION NOTES:
SIGNING AND STRIPING

- INSTALL STRIPING DETAIL OR PAVEMENT MARKING AS INDICATED.
- REPAINT 12" WHITE CROSSWALK.



NORTH BRICK PLANTER
1"=2'

WARNING CAUTION
EXISTING UNDERGROUND UTILITIES
CONTACT: UNDERGROUND SERVICE
ALERT PHONE: (800) 642-2444
FOR MARKING PRIOR TO DIGGING



NO.	REVISION	BY	DATE

WILLDAN
Engineering
9281 Office Park Circle ~ Suite 100
Elk Grove, CA 95758 916.478.6002

DESIGNED:
DRAWN:
CHECKED:



CITY OF SONORA
NORTH WASHINGTON STREET
SONORA, CALIFORNIA 95337



RED CHURCH PEDESTRIAN AND CIRCULATION
IMPROVEMENT PROJECT
WASHINGTON STREET
PLANTER IMPROVEMENTS

DATE:
OCTOBER 08, 2021
SCALE:
AS NOTED
PROJECT NO.:
108299

SHEET:
5
OF
5