



# **Lift Station 1 Force Main Improvements Project Update**

**January 18, 2023**

**Parks & Public Works**

# Lift Station 1 Fun Fact



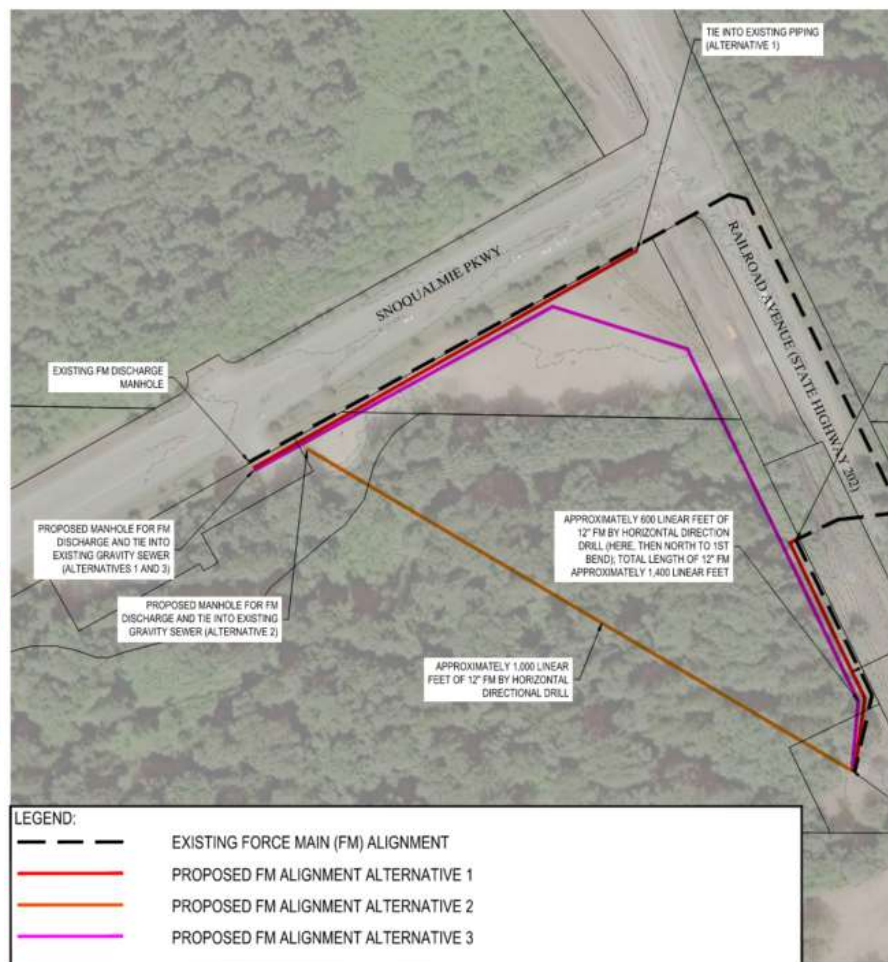
# Purpose of the Lift Station 1 Improvements

- Added capacity for future flow projected through year 2040.
- Added resilience to the second largest lift station.
- 25% capacity increase achieved eliminating restrictions in the force main.

**Table 1**

**Approximate Velocities in the Existing Force Main at Applicable Flow Rates**

	Velocity in Existing Force Main	Recommended Maximum Velocity
1,800 gpm	7.4 fps	8 fps
2,000 gpm	8.2 fps	
2,150 gpm	8.8 fps	



**FIGURE 1: PROPOSED FORCE MAIN (FM) ALIGNMENT ALTERNATIVES SCHI**



# New Force Main Construction

- 1,000 feet of 12-inch diameter pipe installed using trenchless construction methods
- A new flow meter & access port
- No service interruptions
- Completed under original contract
- [https://youtu.be/R2cdmjQXk\\_Y](https://youtu.be/R2cdmjQXk_Y)



# Questions

