

Attachment 1. Sherwin-Williams Color Palette Option

Sherwin-Williams Historic Colors (Exterior)

Figure 1 shows the colors that are featured in the City of Orting's Architectural Design Review guidelines. Note that Orting's image was likely a picture or scan of actual paint chips on file with the city.

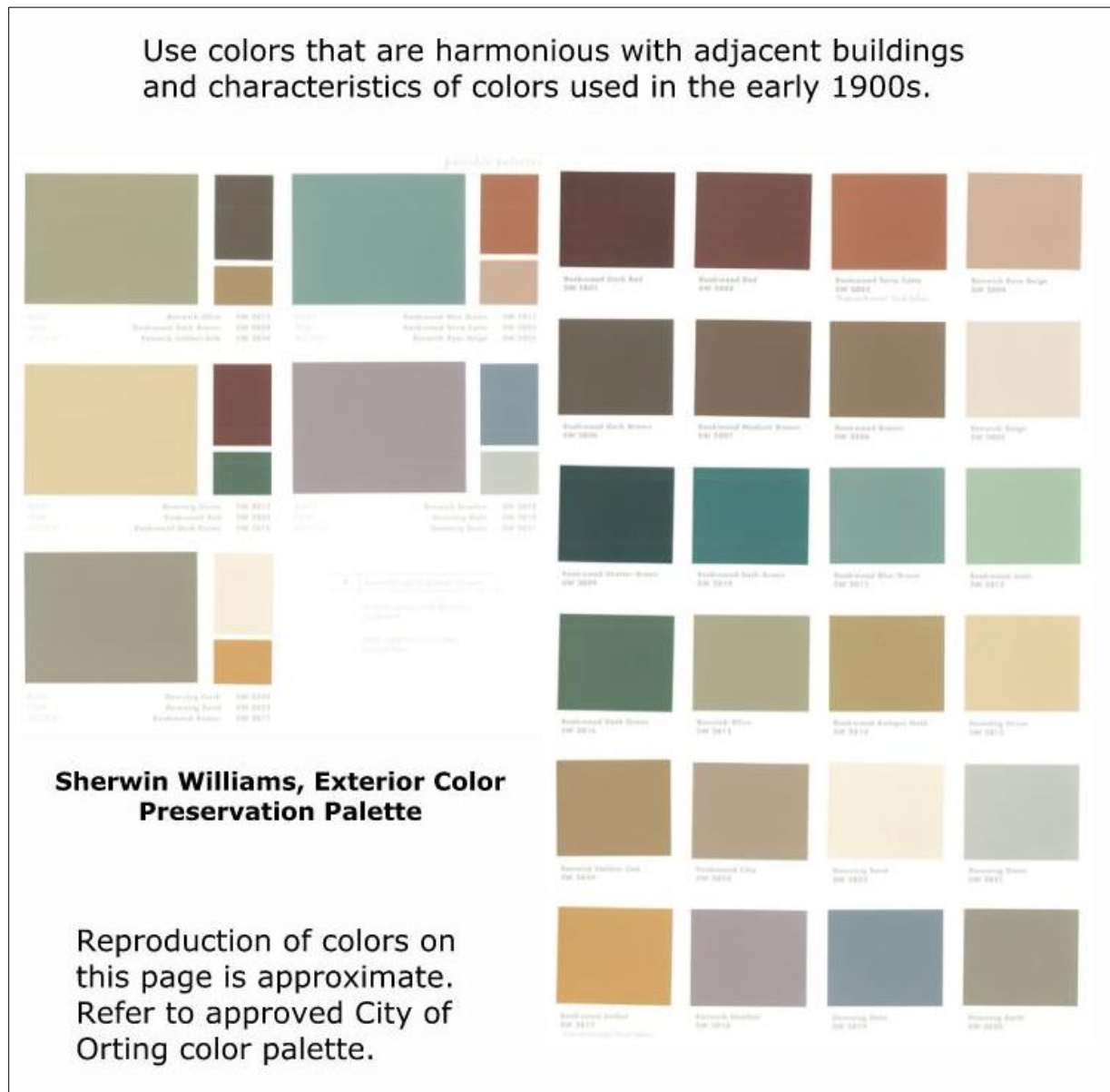


Figure 1. Sherwin-Williams Historic Colors (Exterior) as shown in Orting's ADR Guidelines

Figure 2 show the same colors as they appear on Sherwin-Williams website. Note they are quite a bit darker than the examples in Figure 1 and will appear differently if printed. The actual paint samples of the listed colors may be somewhere between the two examples. Staff could likely order actual paint chips of the colors selected by Planning Commission.

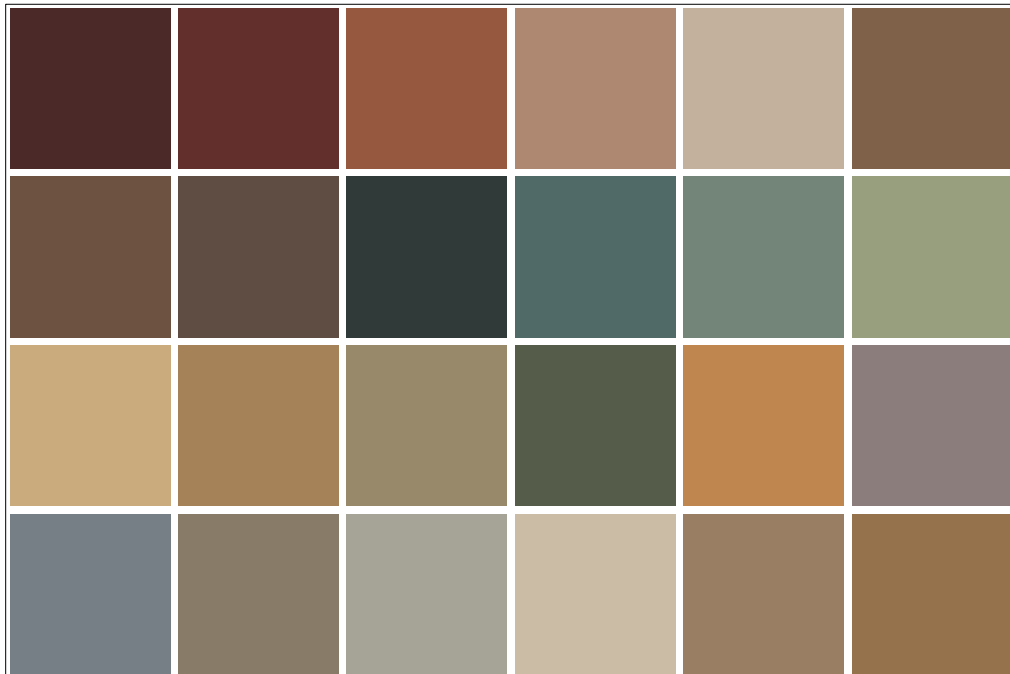


Figure 2. Sherwin-Williams Historic Colors (Exterior) as shown on Sherwin-Williams website¹

The exact colors are listed below in Table 1.

Table 1. List of Sherwin-Williams Historic Colors (Exterior) selected by Planning Commission						
Row 1	SW 2801 Rookwood Dark Red	SW 2802 Rookwood Red	SW 2803 Rookwood Terra Cotta	SW 2804 Renwick Rose Beige	SW 2805 Renwick Beige	SW 2806 Rookwood Brown
Row 2	SW 2807 Rookwood Medium Brown	SW 2808 Rookwood Dark Brown	SW 2809 Rookwood Shutter Green	SW 2810 Rookwood Sash Green	SW 2811 Rookwood Blue Green	SW 2812 Rookwood Jade
Row 3	SW 2813 Downing Straw	SW 2814 Rookwood Antique Gold	SW 2815 Renwick Olive	SW 2816 Rookwood Dark Green	SW 2817 Rookwood Amber	SW 2818 Renwick Heather
Row 4	SW 2819 Downing Slate	SW 2820 Downing Earth	SW 2821 Downing Stone	SW 2822 Downing Sand	SW 2823 Rookwood Clay	SW 2824 Renwick Golden Oak

¹ Source: <https://www.sherwin-williams.com/homeowners/color/find-and-explore-colors/paint-colors-by-family#/active/color-wall/section/historic-colors/>