

CLIMATE CHANGE AND RESILIENCY

A New Comprehensive Plan Element

City of Snoqualmie Planning Commission

June 3, 2024



AGENDA

- 1. Introductions**
- 2. Project Overview**
- 3. Resilience Sub-Element**
- 4. GHG Reduction Sub-Element**
- 5. Community Engagement**
- 6. Questions and Discussion**





2. PROJECT OVERVIEW

HB 1181: CLIMATE LAW (2023)

ADDS CLIMATE & RESILIENCY GOAL TO GROWTH MANAGEMENT ACT



Ensure that comprehensive plans:

- Adapt to and mitigate climate change
- Reduce GHG emissions and per capita VMT
- Foster resiliency to climate impacts and natural hazards
- Protect and enhance environmental, economic, and human health and safety; and
- Advance environmental justice

CLIMATE PLANNING LAW

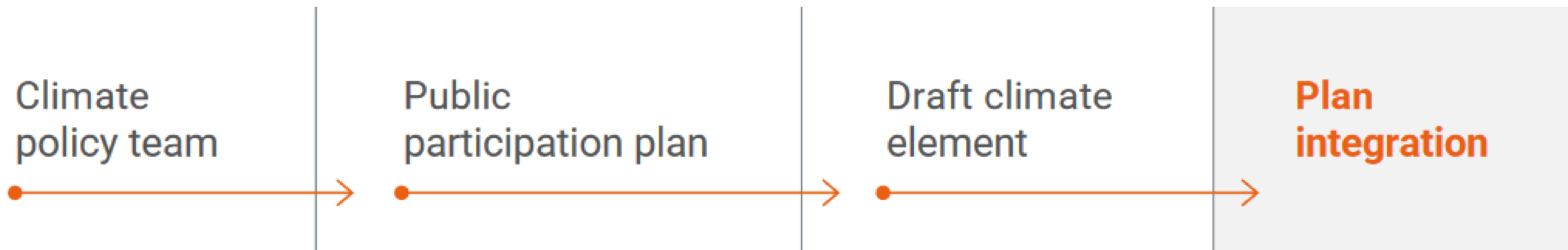
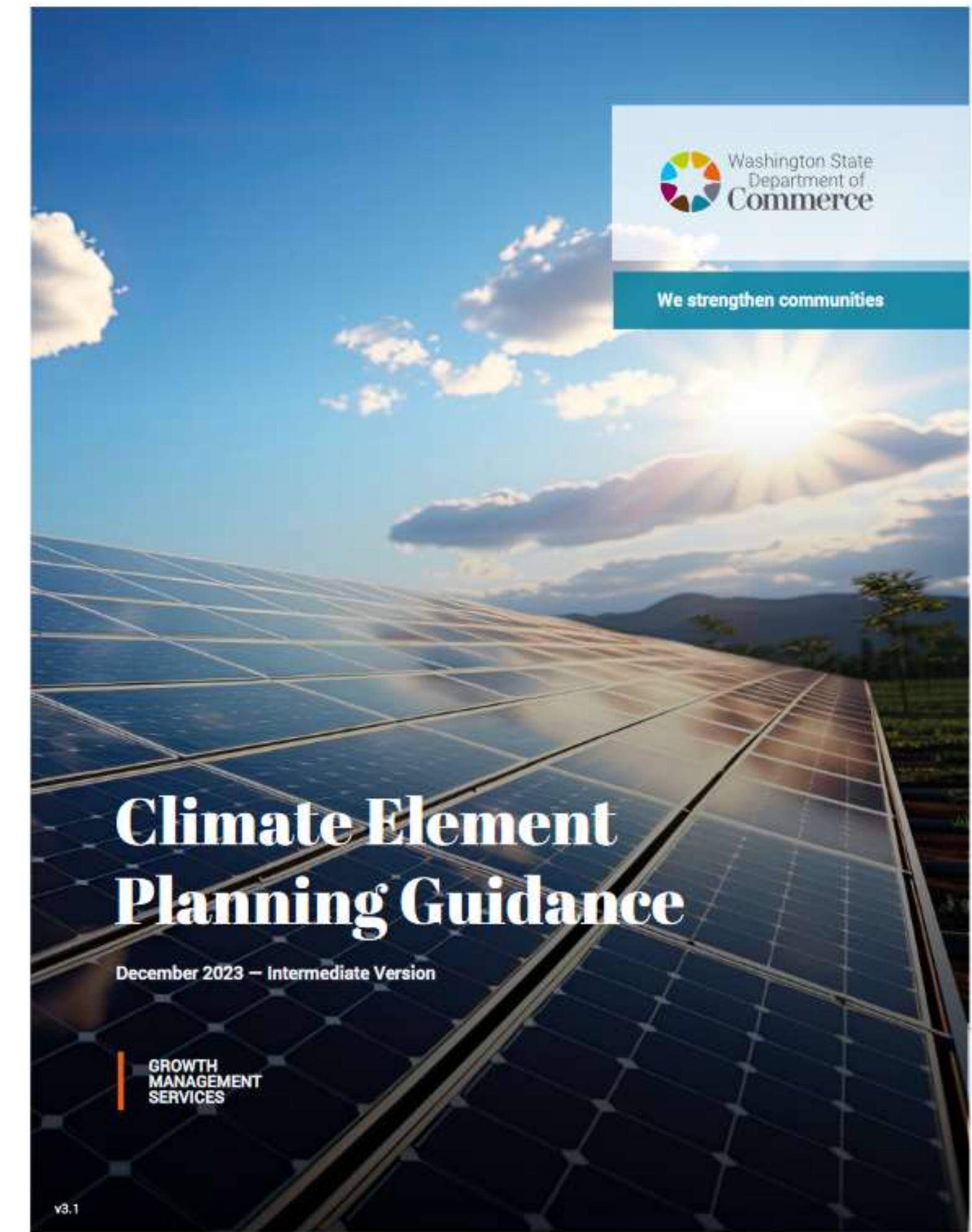
Growth Management Act requires:

- **Climate Resilience:** mandatory for all jurisdictions fully planning under the GMA and encouraged for others
- **Greenhouse Gas Emissions Reduction:** Mandatory for 11 counties (including King County) and their cities over 6,000 population (including Snoqualmie)



CLIMATE PLANNING GUIDANCE

Department of Commerce has published intermediate guidance based on the new law (HB 1181), which includes four main components:





3. RESILIENCE SUB-ELEMENT

RESILIENCE SUB-ELEMENT

SECTORS TO CONSIDER ...



RESILIENCE SUB-ELEMENT

MINIMUM REQUIREMENTS

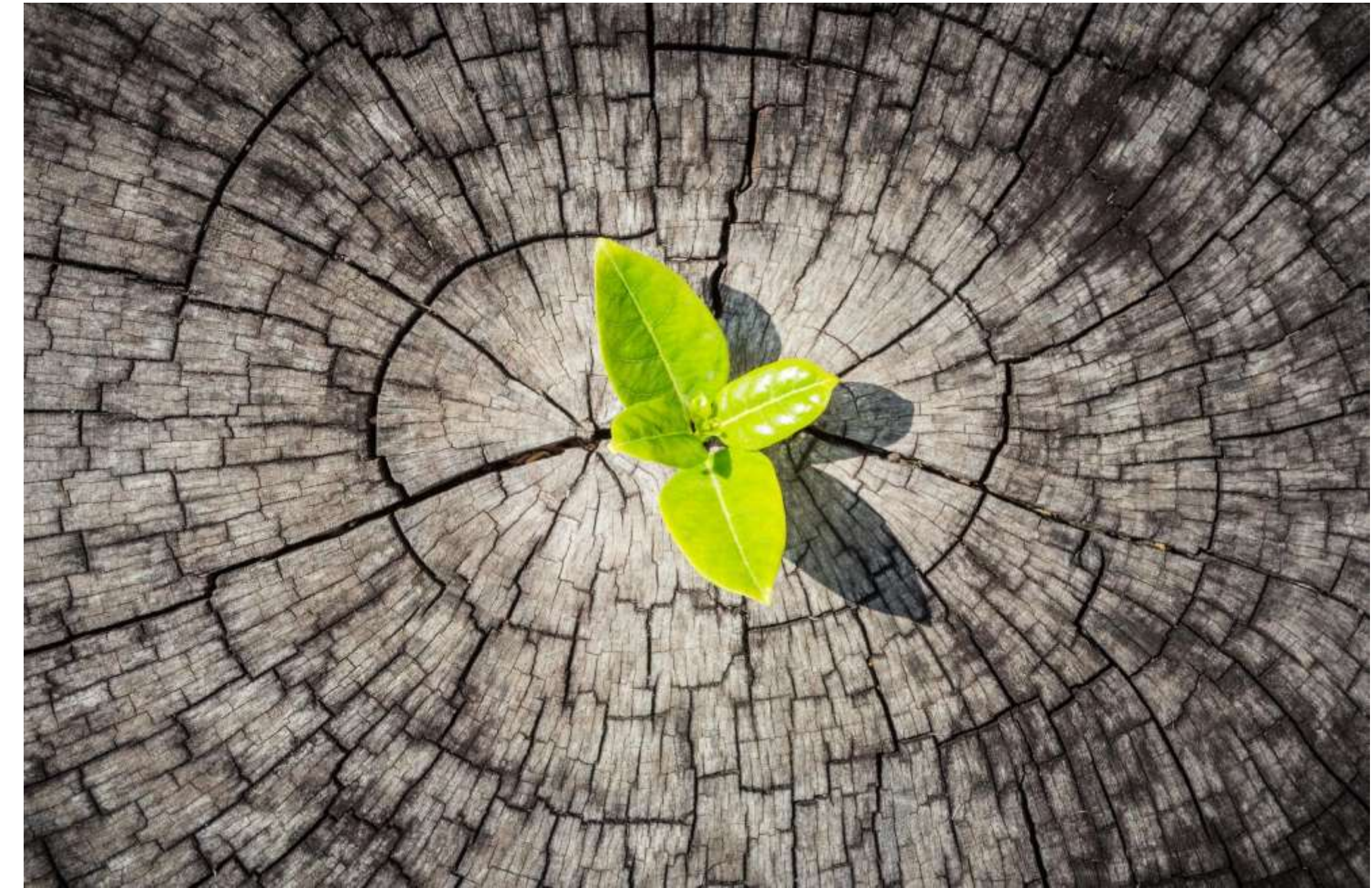
- Include at least one goal and supportive policy for each hazard (e.g. extreme heat) relevant to the jurisdiction
- Prioritize actions that benefit overburdened communities impacted by climate change



RESILIENCE SUB-ELEMENT

MINIMUM REQUIREMENTS

- Address climate-exacerbated natural hazards
- Identify, protect, and enhance natural areas
- Identify, protect, and enhance community resilience, including social, economic, and built-environment factors that support climate change adaption consistent with environmental justice





4. GHG REDUCTION SUB-ELEMENT

GHG REDUCTION SUB-ELEMENT

MINIMUM REQUIREMENTS:

- Set incremental targets to achieve net zero emissions by 2050
- Reduce GHG emissions generated by transportation and land use
- Reduce vehicle miles traveled per capita
- Prioritize reductions that benefit overburdened communities to maximize co-benefits of reduced air pollution and environmental justice



GHG REDUCTION SUB-ELEMENT

MINIMUM REQUIREMENTS:

- Reduce GHG emissions generated by transportation and land use
- Reduce vehicle miles traveled per capita
- Prioritize reductions that benefit overburdened communities to maximize co-benefits of reduced air pollution and environmental justice



GHG REDUCTION SUB-ELEMENT

ADOPT GOALS AND POLICIES FOR THREE CLIMATE SECTORS ...



Buildings & Energy



Transportation



**Zoning &
Development**



5. COMMUNITY ENGAGEMENT

COMMUNITY ENGAGEMENT

TO BE REFINED BY COMMUNITY ENGAGEMENT PLAN



Technical and Community Advisory Committees



Identify Vulnerable Communities and Environmental Health Disparities



Stakeholder Interviews



Online and In-Person Open Houses



Planning Commission and Committees



6. QUESTIONS AND DISCUSSION